

# Converting Colors

Hex(421E20)

Have a look what the booklet for  
Hex(421E20) contains.

<b>Hex(421E20)</b> .....	3
<b><i>Conversions</i></b> .....	4
<b><i>Details</i></b> .....	6
<b><i>Harmonies</i></b> .....	11
<b><i>Previews</i></b> .....	23
<b><i>Color Blindness Simulation</i></b> .....	26
<b><i>CSS Examples</i></b> .....	29

# Color

**Hex(421E20)**

# Conversions

## Conversions Part 1

Format	Color
Hex	421E20
RGB	66, 30, 32
RGB Percent	26%, 12%, 13%
CMY	0.7412, 0.8824, 0.8745
CMYK	0.00, 0.55, 0.52, 0.74
HSL	357°, 38%, 19%
HSV	357°, 55%, 26%
XYZ	2.9718, 2.1911, 1.6328
YIQ	40.9920, 20.8140, 8.2540

# Conversions

## Conversions Part 2

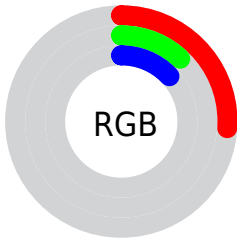
<b>Format</b>	<b>Color</b>
<b>RYB</b>	66, 30, 32
Decimal	4333088
CIELab	16.46, 17.60, 6.65
CIELCh	16, 18.817, 20.680
Yxy	2.1911, 0.4373, 0.3224
Android (android.graphics.Color)	4282523168 (0xFF421E20)
YUV	40.9920, -4.4331, 21.9320
Hunter-Lab	14.8023, 9.9321, 3.8215

# Details

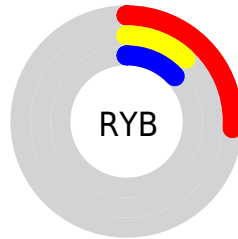
The Hex color **421E20** is a dark color, and the websafe version is hex **330000**. A complement of this color would be **1E4240**, and the grayscale version is **292929**.

A 20% lighter version of the original color is **744B4C**, and **060000** is the 20% darker color. If you saturate the color by 10%, you get **42171A**, and if you desaturate by 10%, it is **422526**.

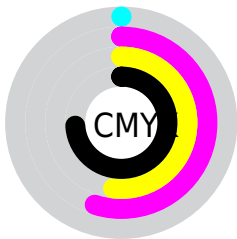
# Distribution



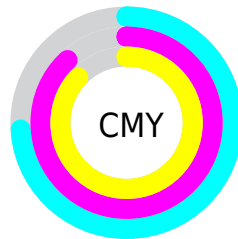
- Red (26%)
- Green (12%)
- Blue (13%)



- Red (26%)
- Yellow (12%)
- Blue (13%)



- Cyan (0%)
- Magenta (55%)
- Yellow (52%)
- Black (74%)



- Cyan (74%)
- Magenta (88%)
- Yellow (87%)

# Brightness & Saturation Gradients

These gradients show how the Hex color 421E20 changes by changing the brightness by 10 percent. The first figure shows a shift by +10% for each color and the second figure -10%.

Similar to the brightness gradients but the following saturation gradients show a change of the Hex color 421E20 by changing the saturation by 10% instead.





421E20



421E20

FFFFFF



2B0808



744B4C



060000



8E6364



000000



A97C7D



C59696



E1B1B1



FECCCD



FFE9E9



421E20



421E20

■ 42171A

■ 422526

■ 421114

■ 422B2C

■ 420A0D

■ 423233

■ 420407

■ 423839

■ 420004

■ 423F3F

■ 424645

■ 424C4C

■ 425352

■ 425958

# Harmonies

## Analogous

The Analogous color harmony consists of three colors that are next to each other on the color wheel.



3F1E2E



421E20



3E2214

# Triad

The Triadic color harmony groups three colors that are evenly spaced from another and form a triangle on the color wheel.



421E20



182E17



052B43

# Complementary

The Complementary color scheme is a pair of colors which are on the opposite of each other on the color wheel.



421E20



1E4240

# Split Complementary

Split-complementary colors differ from the complementary color scheme. The scheme consists of three colors, the original color and two neighbors of the complement color.



002E3D



421E20



012F24

# Square

The Square scheme is like the rectangle color scheme, but the four colors are evenly spaced on the color wheel.



421E20



282B0E



003032



232742

# Rectangle

The Rectangle color scheme consists of four colors that form a rectangle on the color wheel.



421E20



38250F



003032



002D42



# Sweetspot

The Sweet Spot groups the original color and five complimentary colors.



421E20



57494A



401E42



2B2324



ABABAB



2B2B2B



# Same Dimension

The Same Dimension uses a secret algorithm to generate beautiful new colors.



421E20



571E21



422E1E



211E1E



610005



E0000C



# Inverse Universe

The Inverse Universe completely reimagines the original color for something new.



421E20



571E21



1E3242



211E1E



610005

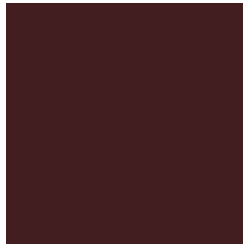


E0000C



# Previews

## White Background



This preview shows how the Hex color 421E20 looks on a white background.

## Color Contrast Check

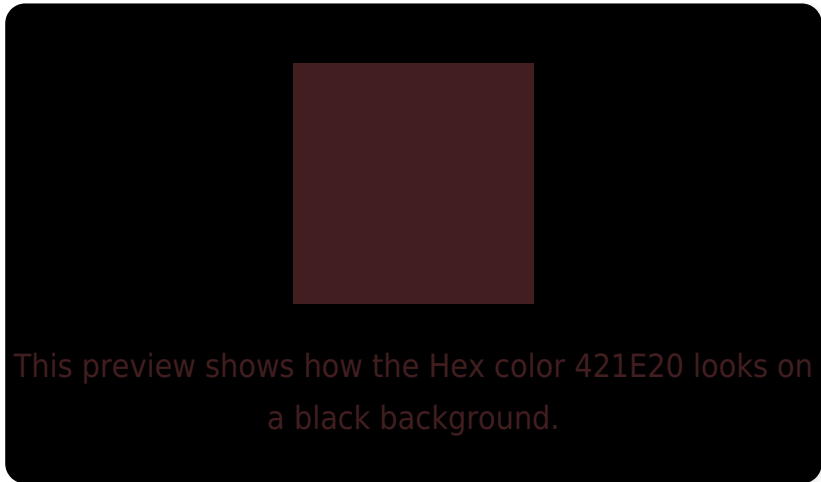
Large Text (above 18pt) WCAG AA ✓ Pass

Any Text WCAG AA ✓ Pass

Large Text (above 18pt) WCAG AAA ✓ Pass

Any Text WCAG AAA ✓ Pass

# Black Background



## Color Contrast Check

Large Text (above 18pt) WCAG AA × Fail

Any Text WCAG AA × Fail

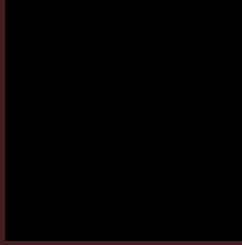
Large Text (above 18pt) WCAG AAA × Fail

Any Text WCAG AAA × Fail

If you want to check with other color combinations, try the [Color Contrast Checker](#).



## Hex 421E20 Background



This preview shows how black text looks on a background with the Hex color 421E20.



This preview shows how white text looks on a background with the Hex color 421E20.

# Color Blindness Simulation

Color vision deficiency is a very complex topic, and I could not describe the different causes any better than Wikipedia does, so if you want to learn more, you should check out their [article about color blindness](#).

## Dichromacy



**Original Color**  
421E20

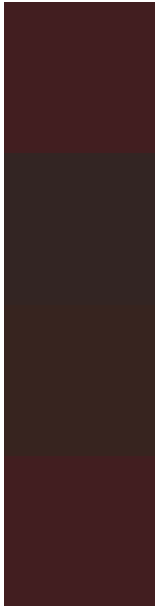
**Protanopia**  
2B2925

**Deuteranopia**  
31281E



**Tritanopia**  
421E20

# Trichromacy



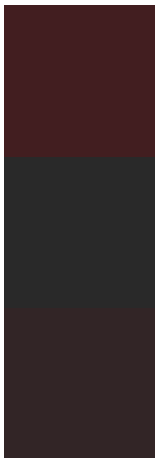
**Original Color**  
421E20

**Protanomaly**  
332523

**Deuteranomaly**  
37241F

**Tritanomaly**  
421E20

# Monochromacy



**Original Color**  
421E20

**Achromatopsia**  
292929

**Achromatomaly**  
322526

# CSS Examples

## Text

The CSS property to change the color of the text to Hex 421E20 is called "color". The color property can be set on classes, ids or directly on the HTML element.

This example shows how text in the color #421E20 looks like.

```
.text, #text, p{  
    color:#421E20  
}
```

If you want to add a text shadow in that color use the text-shadow property, you can generate a text shadow directly with our [CSS Text Shadow Generator](#).

Here you see how black text with a 4 pixel #421E20 colored shadow looks like.

```
.shadow{ text-shadow: 4px 4px 2px #421E20
}
```

## Border

The CSS property to change the border of an element to Hex 421E20 is called "border". The border property can be set on classes, ids or directly on the HTML element.

This example shows the color as border, it can be applied via the CSS property "border" or "border-color".

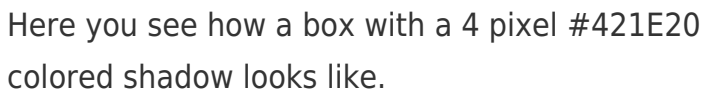
```
.border, #border, table{ border:4px solid
#421E20 }
```

If only the border color should be changed use the property `border-color`.

```
.border{ border-color:#421E20 }
```

If you want to add a box shadow in that color use:

Here you see how a box with a 4 pixel #421E20 colored shadow looks like.

A rectangular box with a dark red border and a dark red shadow. The shadow is cast to the right and bottom of the box, creating a 3D effect. The text inside the box is black and reads: "Here you see how a box with a 4 pixel #421E20 colored shadow looks like."

```
.boxshadow{ -moz-box-shadow:4px 4px 4px  
4px #421E20; -webkit-box-shadow:4px 4px  
4px 4px #421E20; box-shadow:4px 4px 4px  
4px #421E20 }
```

# Background

The CSS property to change the background color of an element to Hex 421E20 is called "background". The background property can be set on classes, ids or directly on the HTML element.

```
.background, #background, body{  
background:#421E20 }
```

If only the background color should be changed can be used:

```
.background{ background-color:#421E20 }
```

This example shows the color as background, it is applied via the CSS property "background".

To optimize and compress your CSS code, you can use our [online CSS compressor and optimizer](#) based on csstidy. If you want to create a linear or radial gradient as background or border, check our [CSS Gradient Generator](#).



# Hey! You found this booklet interesting? Support Converting Colors with the new Membership Option!

The pro membership hides all ads, plus gives you double the colors in the color bucket, and more awesome pro features!

**[Learn more, Memberships starting at \\$2.50/m!](#)**

**Follow me  
on Twitter!**

@ConvertingColor