

Converting Colors

Hex(42292A)

Have a look what the booklet for
Hex(42292A) contains.

Hex(42292A)	3
<i>Conversions</i>	4
<i>Details</i>	6
<i>Harmonies</i>	11
<i>Previews</i>	23
<i>Color Blindness Simulation</i>	26
<i>CSS Examples</i>	29

Color

Hex(42292A)

Conversions

Conversions Part 1

Format	Color
Hex	42292A
RGB	66, 41, 42
RGB Percent	26%, 16%, 16%
CMY	0.7412, 0.8392, 0.8353
CMYK	0.00, 0.38, 0.36, 0.74
HSL	358°, 23%, 21%
HSV	358°, 38%, 26%
XYZ	3.4576, 2.9113, 2.5702
YIQ	48.5890, 14.5790, 5.6110

Conversions

Conversions Part 2

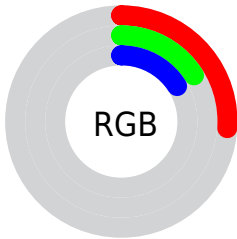
Format	Color
R_{YB}	66, 41, 42
Decimal	4335914
CIE _{Lab}	19.69, 11.86, 4.15
CIE _{LCh}	20, 12.564, 19.308
Yxy	2.9113, 0.3868, 0.3257
Android (android.graphics.Color)	4282525994 (0xFF42292A)
YUV	48.5890, -3.2484, 15.2694
Hunter-Lab	17.0625, 6.3126, 3.0127

Details

The Hex color **42292A** is a dark color, and the websafe version is hex **333333**. A complement of this color would be **294241**, and the grayscale version is **313131**.

A 20% lighter version of the original color is **735657**, and **170000** is the 20% darker color. If you saturate the color by 10%, you get **422224**, and if you desaturate by 10%, it is **423030**.

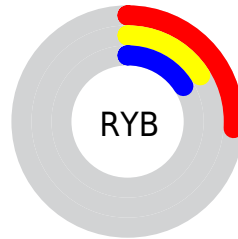
Distribution



Red (26%)

Green (16%)

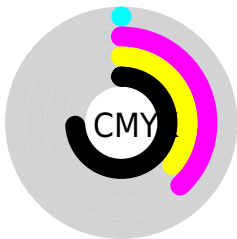
Blue (16%)



Red (26%)

Yellow (16%)

Blue (16%)

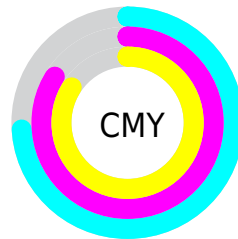


Cyan (0%)

Magenta (38%)

Yellow (36%)

Black (74%)



Cyan (74%)

Magenta (84%)

Yellow (84%)

Brightness & Saturation Gradients

These gradients show how the Hex color 42292A changes by changing the brightness by 10 percent. The first figure shows a shift by +10% for each color and the second figure -10%.

Similar to the brightness gradients but the following saturation gradients show a change of the Hex color 42292A by changing the saturation by 10% instead.



42292A



42292A

FFFFFF



2B1416



735657



170000



8D6F70



000000



A78889



C3A3A3



DFBEBE



FCDADA



FFF6F6



42292A



42292A

■ 422224

■ 423030

■ 421C1D

■ 423637

■ 421517

■ 423D3D

■ 420F11

■ 424343

■ 42080A

■ 424A4A

■ 420104

■ 425150

■ 420003

■ 425756

■ 425E5D

■ 426463

Harmonies

Analogous

The Analogous color harmony consists of three colors that are next to each other on the color wheel.



402933



42292A



3F2B22

Triad

The Triadic color harmony groups three colors that are evenly spaced from another and form a triangle on the color wheel.



42292A



263323



1F3141

Complementary

The Complementary color scheme is a pair of colors which are on the opposite of each other on the color wheel.



42292A



294241

Split Complementary

Split-complementary colors differ from the complementary color scheme. The scheme consists of three colors, the original color and two neighbors of the complement color.



14343D



42292A



1B342C

Square

The Square scheme is like the rectangle color scheme, but the four colors are evenly spaced on the color wheel.



42292A



30311E



133535



2C2E41

Rectangle

The Rectangle color scheme consists of four colors that form a rectangle on the color wheel.



42292A



3C2D1F



133535



1B3241

Sweetspot

The Sweet Spot groups the original color and five complimentary colors.



42292A



574D4E



412942



2B2626



ABABAB



2B2B2B

Same Dimension

The Same Dimension uses a secret algorithm to generate beautiful new colors.



42292A



573031



423429



211E1E



610004



E00009

Inverse Universe

The Inverse Universe completely reimagines the original color for something new.



42292A



573031



293742



211E1E



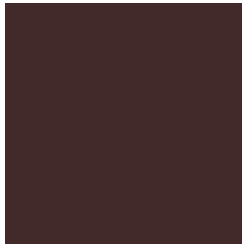
610004



E00009

Previews

White Background



This preview shows how the Hex color 42292A looks on a white background.

Color Contrast Check

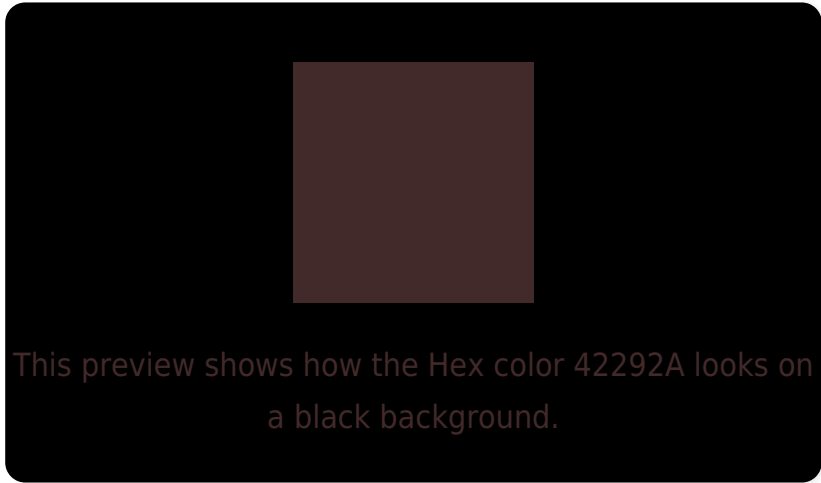
Large Text (above 18pt) WCAG AA ✓ Pass

Any Text WCAG AA ✓ Pass

Large Text (above 18pt) WCAG AAA ✓ Pass

Any Text WCAG AAA ✓ Pass

Black Background



Color Contrast Check

Large Text (above 18pt) WCAG AA × Fail

Any Text WCAG AA × Fail

Large Text (above 18pt) WCAG AAA × Fail

Any Text WCAG AAA × Fail

If you want to check with other color combinations, try the [Color Contrast Checker](#).

Hex 42292A Background



This preview shows how black text looks on a background with the Hex color 42292A.

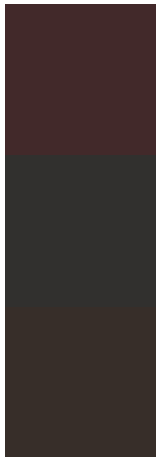


This preview shows how white text looks on a background with the Hex color 42292A.

Color Blindness Simulation

Color vision deficiency is a very complex topic, and I could not describe the different causes any better than Wikipedia does, so if you want to learn more, you should check out their [article about color blindness](#).

Dichromacy



Original Color
42292A

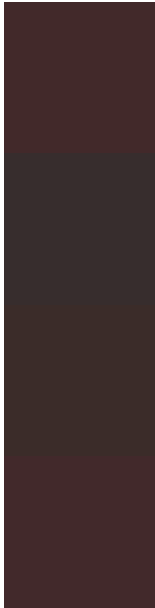
Protanopia
31302E

Deuteranopia
372E29



Tritanopia
42292C

Trichromacy



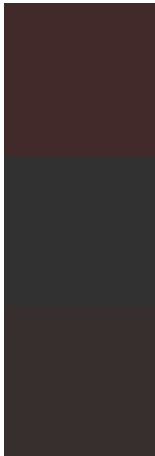
Original Color
42292A

Protanomaly
372D2D

Deuteranomaly
3B2C29

Tritanomaly
42292B

Monochromacy



Original Color
42292A

Achromatopsia
313131

Achromatomaly
372E2E

CSS Examples

Text

The CSS property to change the color of the text to Hex 42292A is called "color". The color property can be set on classes, ids or directly on the HTML element.

This example shows how text in the color #42292A looks like.

```
.text, #text, p{  
    color:#42292A  
}
```

If you want to add a text shadow in that color use the text-shadow property, you can generate a text shadow directly with our [CSS Text Shadow Generator](#).

Here you see how black text with a 4 pixel #42292A colored shadow looks like.

```
.shadow{ text-shadow: 4px 4px 2px #42292A
}
```

Border

The CSS property to change the border of an element to Hex 42292A is called "border". The border property can be set on classes, ids or directly on the HTML element.

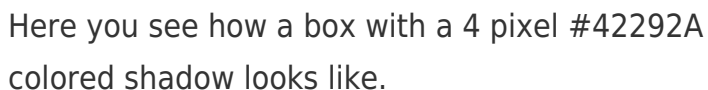
This example shows the color as border, it can be applied via the CSS property "border" or "border-color".

```
.border, #border, table{ border:4px solid
#42292A }
```

If only the border color should be changed use the property `border-color`.

```
.border{ border-color:#42292A }
```

If you want to add a box shadow in that color use:



Here you see how a box with a 4 pixel #42292A colored shadow looks like.

```
.boxshadow{ -moz-box-shadow:4px 4px 4px  
4px #42292A; -webkit-box-shadow:4px 4px  
4px 4px #42292A; box-shadow:4px 4px 4px  
4px #42292A }
```

Background

The CSS property to change the background color of an element to Hex 42292A is called "background". The background property can be set on classes, ids or directly on the HTML element.

```
.background, #background, body{  
background:#42292A }
```

If only the background color should be changed can be used:

```
.background{ background-color:#42292A }
```

This example shows the color as background, it is applied via the CSS property "background".

To optimize and compress your CSS code, you can use our [online CSS compressor and optimizer](#) based on csstidy. If you want to create a linear or radial gradient as background or border, check our [CSS Gradient Generator](#).

Hey! You found this booklet interesting? Support Converting Colors with the new Membership Option!

The pro membership hides all ads, plus gives you double the colors in the color bucket, and more awesome pro features!

[Learn more, Memberships starting at \\$2.50/m!](#)

**Follow me
on Twitter!**

@ConvertingColor