

Converting Colors

Hex(42292C)

Have a look what the booklet for
Hex(42292C) contains.

Hex(42292C)	3
<i>Conversions</i>	4
<i>Details</i>	6
<i>Harmonies</i>	11
<i>Previews</i>	23
<i>Color Blindness Simulation</i>	26
<i>CSS Examples</i>	29

Color

Hex(42292C)

Conversions

Conversions Part 1

Format	Color
Hex	42292C
RGB	66, 41, 44
RGB Percent	26%, 16%, 17%
CMY	0.7412, 0.8392, 0.8275
CMYK	0.00, 0.38, 0.33, 0.74
HSL	353°, 23%, 21%
HSV	353°, 38%, 26%
XYZ	3.4943, 2.9260, 2.7635
YIQ	48.8170, 13.9370, 6.2330

Conversions

Conversions Part 2

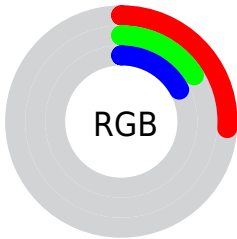
Format	Color
R_{YB}	66, 41, 44
Decimal	4335916
CIE _{Lab}	19.74, 12.18, 2.85
CIE _{LCh}	20, 12.513, 13.184
Yxy	2.9260, 0.3805, 0.3186
Android (android.graphics.Color)	4282525996 (0xFF42292C)
YUV	48.8170, -2.3748, 15.0695
Hunter-Lab	17.1055, 6.5296, 2.3953

Details

The Hex color **42292C** is a dark color, and the websafe version is hex **333333**. A complement of this color would be **29423F**, and the grayscale version is **313131**.

A 20% lighter version of the original color is **735759**, and **170000** is the 20% darker color. If you saturate the color by 10%, you get **422226**, and if you desaturate by 10%, it is **423032**.

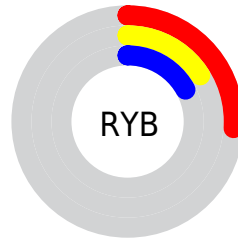
Distribution



Red (26%)

Green (16%)

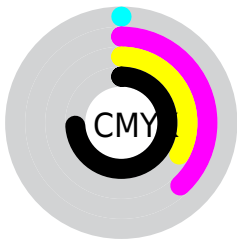
Blue (17%)



Red (26%)

Yellow (16%)

Blue (17%)

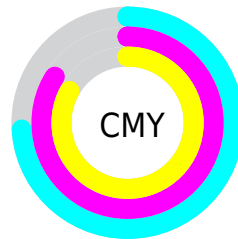


Cyan (0%)

Magenta (38%)

Yellow (33%)

Black (74%)



Cyan (74%)

Magenta (84%)

Yellow (83%)

Brightness & Saturation Gradients

These gradients show how the Hex color 42292C changes by changing the brightness by 10 percent. The first figure shows a shift by +10% for each color and the second figure -10%.

Similar to the brightness gradients but the following saturation gradients show a change of the Hex color 42292C by changing the saturation by 10% instead.



42292C



42292C

FFFFFF



2B1418



735759



170000



8D6F72



000000



A7888B



C3A3A6



DFBEC1



FBDADD



FFF6F9



42292C



42292C

■ 422226

■ 423032

■ 421C20

■ 423638

■ 42151B

■ 423D3D

■ 420F15

■ 424343

■ 42080F

■ 424A49

■ 420109

■ 42514F

■ 420008

■ 425755

■ 425E5A

■ 426460

Harmonies

Analogous

The Analogous color harmony consists of three colors that are next to each other on the color wheel.



3F2A35



42292C



402B24

Triad

The Triadic color harmony groups three colors that are evenly spaced from another and form a triangle on the color wheel.



42292C



283322



1C3241

Complementary

The Complementary color scheme is a pair of colors which are on the opposite of each other on the color wheel.



42292C



29423F

Split Complementary

Split-complementary colors differ from the complementary color scheme. The scheme consists of three colors, the original color and two neighbors of the complement color.



13343C



42292C



1D342A

Square

The Square scheme is like the rectangle color scheme, but the four colors are evenly spaced on the color wheel.



42292C



32301E



143534



2A2F41

Rectangle

The Rectangle color scheme consists of four colors that form a rectangle on the color wheel.



42292C



3D2C20



143534



183340

Sweetspot

The Sweet Spot groups the original color and five complimentary colors.



42292C



574D4E



3F2942



2B2626



ABABAB



2B2B2B

Same Dimension

The Same Dimension uses a secret algorithm to generate beautiful new colors.



42292C



573034



423229



211E1E



61000C



E0001B

Inverse Universe

The Inverse Universe completely reimagines the original color for something new.



42292C



573034



293942



211E1E



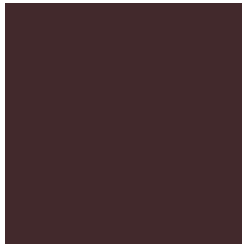
61000C



E0001B

Previews

White Background



This preview shows how the Hex color 42292C looks on a white background.

Color Contrast Check

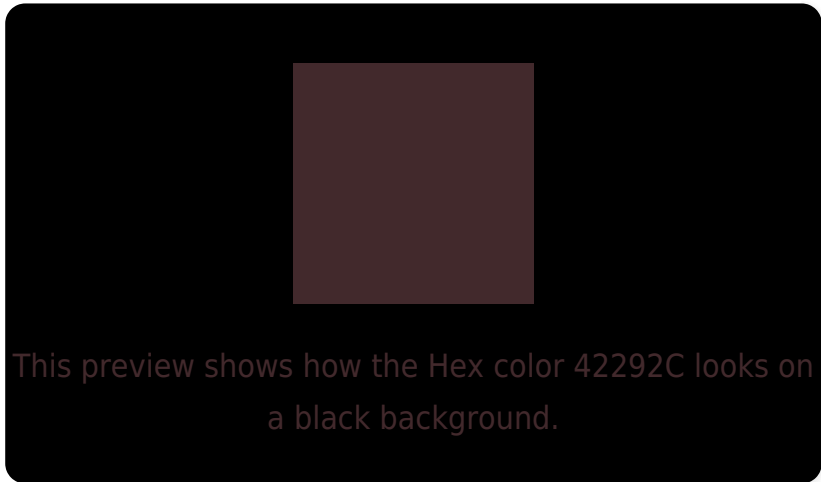
Large Text (above 18pt) WCAG AA ✓ Pass

Any Text WCAG AA ✓ Pass

Large Text (above 18pt) WCAG AAA ✓ Pass

Any Text WCAG AAA ✓ Pass

Black Background



Color Contrast Check

Large Text (above 18pt) WCAG AA × Fail

Any Text WCAG AA × Fail

Large Text (above 18pt) WCAG AAA × Fail

Any Text WCAG AAA × Fail

If you want to check with other color combinations, try the [Color Contrast Checker](#).

Hex 42292C Background



This preview shows how black text looks on a background with the Hex color 42292C.

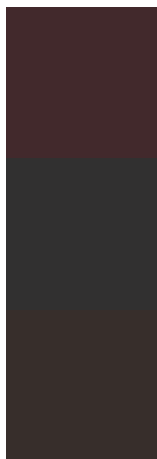


This preview shows how white text looks on a background with the Hex color 42292C.

Color Blindness Simulation

Color vision deficiency is a very complex topic, and I could not describe the different causes any better than Wikipedia does, so if you want to learn more, you should check out their [article about color blindness](#).

Dichromacy



Original Color
42292C

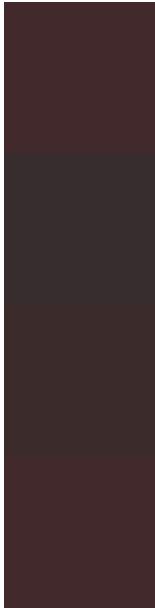
Protanopia
313030

Deuteranopia
372E2B



Tritanopia
42292C

Trichromacy



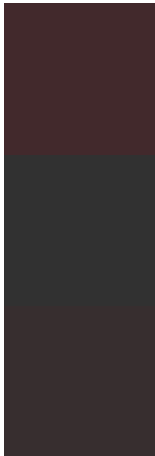
Original Color
42292C

Protanomaly
372D2F

Deuteranomaly
3B2C2B

Tritanomaly
42292C

Monochromacy



Original Color
42292C

Achromatopsia
313131

Achromatomaly
372E2F

CSS Examples

Text

The CSS property to change the color of the text to Hex 42292C is called "color". The color property can be set on classes, ids or directly on the HTML element.

This example shows how text in the color #42292C looks like.

```
.text, #text, p{  
    color:#42292C  
}
```

If you want to add a text shadow in that color use the text-shadow property, you can generate a text shadow directly with our [CSS Text Shadow Generator](#).

Here you see how black text with a 4 pixel #42292C colored shadow looks like.

```
.shadow{ text-shadow: 4px 4px 2px #42292C
}
```

Border

The CSS property to change the border of an element to Hex 42292C is called "border". The border property can be set on classes, ids or directly on the HTML element.

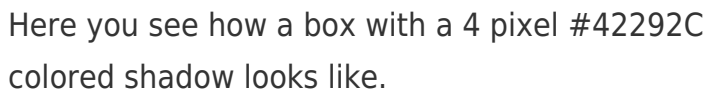
This example shows the color as border, it can be applied via the CSS property "border" or "border-color".

```
.border, #border, table{ border:4px solid
#42292C }
```

If only the border color should be changed use the property `border-color`.

```
.border{ border-color:#42292C }
```

If you want to add a box shadow in that color use:



Here you see how a box with a 4 pixel #42292C colored shadow looks like.

```
.boxshadow{ -moz-box-shadow:4px 4px 4px  
4px #42292C; -webkit-box-shadow:4px 4px  
4px 4px #42292C; box-shadow:4px 4px 4px  
4px #42292C }
```

Background

The CSS property to change the background color of an element to Hex 42292C is called "background". The background property can be set on classes, ids or directly on the HTML element.

```
.background, #background, body{  
background:#42292C }
```

If only the background color should be changed can be used:

```
.background{ background-color:#42292C }
```

This example shows the color as background, it is applied via the CSS property "background".

To optimize and compress your CSS code, you can use our [online CSS compressor and optimizer](#) based on csstidy. If you want to create a linear or radial gradient as background or border, check our [CSS Gradient Generator](#).

Hey! You found this booklet interesting? Support Converting Colors with the new Membership Option!

The pro membership hides all ads, plus gives you double the colors in the color bucket, and more awesome pro features!

[Learn more, Memberships starting at \\$2.50/m!](#)

**Follow me
on Twitter!**

@ConvertingColor