

Converting Colors

Hex(422B30)

Have a look what the booklet for
Hex(422B30) contains.

Hex(422B30)	3
<i>Conversions</i>	4
<i>Details</i>	6
<i>Harmonies</i>	11
<i>Previews</i>	23
<i>Color Blindness Simulation</i>	26
<i>CSS Examples</i>	29

Color

Hex(422B30)

Conversions

Conversions Part 1

Format	Color
Hex	422B30
RGB	66, 43, 48
RGB Percent	26%, 17%, 19%
CMY	0.7412, 0.8314, 0.8118
CMYK	0.00, 0.35, 0.27, 0.74
HSL	347°, 21%, 21%
HSV	347°, 35%, 26%
XYZ	3.6441, 3.0994, 3.2025
YIQ	50.4470, 12.1030, 6.4310

Conversions

Conversions Part 2

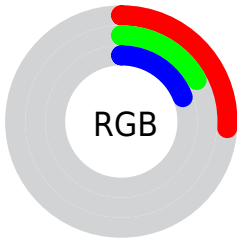
Format	Color
RYB	66, 43, 48
Decimal	4336432
CIELab	20.44, 11.54, 1.09
CIElCh	20, 11.591, 5.384
Yxy	3.0994, 0.3664, 0.3116
Android (android.graphics.Color)	4282526512 (0xFF422B30)
YUV	50.4470, -1.2064, 13.6400
Hunter-Lab	17.6051, 6.1393, 1.5384

Details

The Hex color **422B30** is a dark color, and the websafe version is hex **333333**. A complement of this color would be **2B423D**, and the grayscale version is **323232**.

A 20% lighter version of the original color is **73595E**, and **190000** is the 20% darker color. If you saturate the color by 10%, you get **42242B**, and if you desaturate by 10%, it is **423235**.

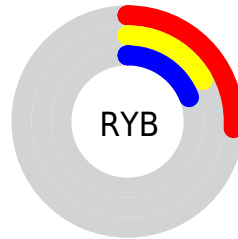
Distribution



Red (26%)

Green (17%)

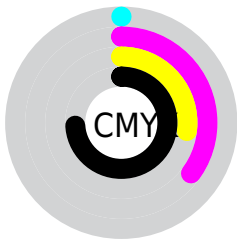
Blue (19%)



Red (26%)

Yellow (17%)

Blue (19%)

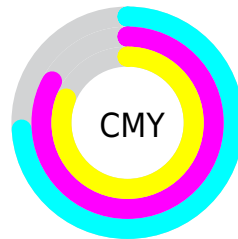


Cyan (0%)

Magenta (35%)

Yellow (27%)

Black (74%)



Cyan (74%)

Magenta (83%)

Yellow (81%)

Brightness & Saturation Gradients

These gradients show how the Hex color 422B30 changes by changing the brightness by 10 percent. The first figure shows a shift by +10% for each color and the second figure -10%.

Similar to the brightness gradients but the following saturation gradients show a change of the Hex color 422B30 by changing the saturation by 10% instead.



422B30



422B30

FFFFFF



2B161B



73595E



190000



8C7177



000000



A78B90



C2A5AB



DEC0C6



FBDCE2



FFF9FF



422B30



422B30

■ 42242B

■ 423235

■ 421E26

■ 42383A

■ 421721

■ 423F3F

■ 42111B

■ 424545

■ 420A16

■ 424C4A

■ 420311

■ 42534F

■ 42000E

■ 425954

■ 426059

■ 42665E

Harmonies

Analogous

The Analogous color harmony consists of three colors that are next to each other on the color wheel.



3D2C38



422B30



422C28

Triad

The Triadic color harmony groups three colors that are evenly spaced from another and form a triangle on the color wheel.



422B30



2D3423



1D3440

Complementary

The Complementary color scheme is a pair of colors which are on the opposite of each other on the color wheel.



422B30



2B423D

Split Complementary

Split-complementary colors differ from the complementary color scheme. The scheme consists of three colors, the original color and two neighbors of the complement color.



17363B



422B30



23352A

Square

The Square scheme is like the rectangle color scheme, but the four colors are evenly spaced on the color wheel.



422B30



363120



1A3633



293242

Rectangle

The Rectangle color scheme consists of four colors that form a rectangle on the color wheel.



422B30



3F2D24



1A3633



1A353F

Sweetspot

The Sweet Spot groups the original color and five complimentary colors.



422B30



574E50



3D2B42



2B2627



ABABAB



2B2B2B

Same Dimension

The Same Dimension uses a secret algorithm to generate beautiful new colors.



422B30



57323A



42312B



211E1F



610015



E00031

Inverse Universe

The Inverse Universe completely reimagines the original color for something new.



422B30



57323A



2B3C42



211E1F



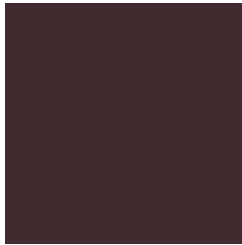
610015



E00031

Previews

White Background



This preview shows how the Hex color 422B30 looks on a white background.

Color Contrast Check

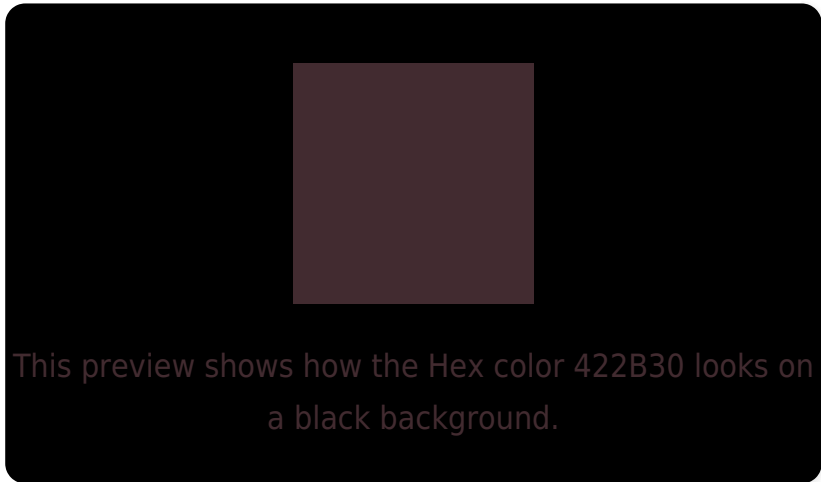
Large Text (above 18pt) WCAG AA ✓ Pass

Any Text WCAG AA ✓ Pass

Large Text (above 18pt) WCAG AAA ✓ Pass

Any Text WCAG AAA ✓ Pass

Black Background



Color Contrast Check

Large Text (above 18pt) WCAG AA × Fail

Any Text WCAG AA × Fail

Large Text (above 18pt) WCAG AAA × Fail

Any Text WCAG AAA × Fail

If you want to check with other color combinations, try the [Color Contrast Checker](#).

Hex 422B30 Background



This preview shows how black text looks on a background with the Hex color 422B30.

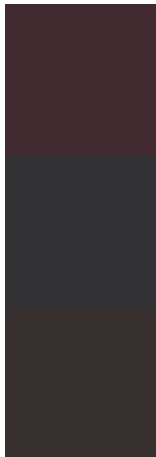


This preview shows how white text looks on a background with the Hex color 422B30.

Color Blindness Simulation

Color vision deficiency is a very complex topic, and I could not describe the different causes any better than Wikipedia does, so if you want to learn more, you should check out their [article about color blindness](#).

Dichromacy



Original Color
422B30

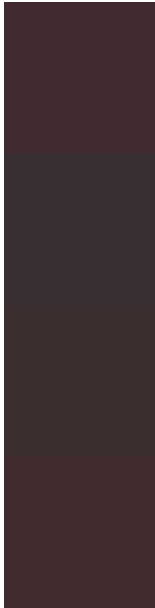
Protanopia
323134

Deuteranopia
37302F



Tritanopia
422B2F

Trichromacy



Original Color

422B30

Protanomaly

382F33

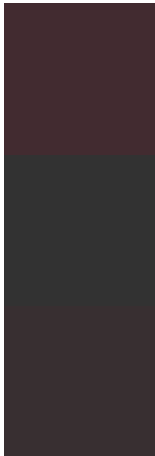
Deuteranomaly

3B2E2F

Tritanomaly

422B2F

Monochromacy



Original Color

422B30

Achromatopsia

323232

Achromatomaly

382F31

CSS Examples

Text

The CSS property to change the color of the text to Hex 422B30 is called "color". The color property can be set on classes, ids or directly on the HTML element.

This example shows how text in the color #422B30 looks like.

```
.text, #text, p{  
    color:#422B30  
}
```

If you want to add a text shadow in that color use the text-shadow property, you can generate a text shadow directly with our [CSS Text Shadow Generator](#).

Here you see how black text with a 4 pixel #422B30 colored shadow looks like.

```
.shadow{ text-shadow: 4px 4px 2px #422B30
}
```

Border

The CSS property to change the border of an element to Hex 422B30 is called "border". The border property can be set on classes, ids or directly on the HTML element.

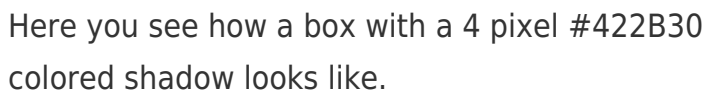
This example shows the color as border, it can be applied via the CSS property "border" or "border-color".

```
.border, #border, table{ border:4px solid
#422B30 }
```

If only the border color should be changed use the property `border-color`.

```
.border{ border-color:#422B30 }
```

If you want to add a box shadow in that color use:



Here you see how a box with a 4 pixel #422B30 colored shadow looks like.

```
.boxshadow{ -moz-box-shadow:4px 4px 4px  
4px #422B30; -webkit-box-shadow:4px 4px  
4px 4px #422B30; box-shadow:4px 4px 4px  
4px #422B30 }
```

Background

The CSS property to change the background color of an element to Hex 422B30 is called "background". The background property can be set on classes, ids or directly on the HTML element.

```
.background, #background, body{  
background:#422B30 }
```

If only the background color should be changed can be used:

```
.background{ background-color:#422B30 }
```

This example shows the color as background, it is applied via the CSS property "background".

To optimize and compress your CSS code, you can use our [online CSS compressor and optimizer](#) based on csstidy. If you want to create a linear or radial gradient as background or border, check our [CSS Gradient Generator](#).

Hey! You found this booklet interesting? Support Converting Colors with the new Membership Option!

The pro membership hides all ads, plus gives you double the colors in the color bucket, and more awesome pro features!

[Learn more, Memberships starting at \\$2.50/m!](#)

**Follow me
on Twitter!**

@ConvertingColor