

Converting Colors

Hex(42331E)

Have a look what the booklet for
Hex(42331E) contains.

Hex(42331E)	3
<i>Conversions</i>	4
<i>Details</i>	6
<i>Harmonies</i>	11
<i>Previews</i>	23
<i>Color Blindness Simulation</i>	26
<i>CSS Examples</i>	29

Color

Hex(42331E)

Conversions

Conversions Part 1

Format	Color
Hex	42331E
RGB	66, 51, 30
RGB Percent	26%, 20%, 12%
CMY	0.7412, 0.8000, 0.8824
CMYK	0.00, 0.23, 0.55, 0.74
HSL	35°, 38%, 19%
HSV	35°, 55%, 26%
XYZ	3.6649, 3.6196, 1.7338
YIQ	53.0910, 15.6810, -3.3510

Conversions

Conversions Part 2

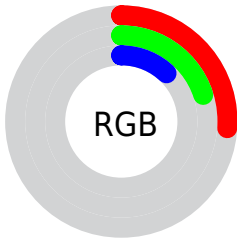
Format	Color
R_{YB}	56, 66, 30
Decimal	4338462
CIE _{Lab}	22.37, 3.52, 15.84
CIE _{LCh}	22, 16.229, 77.462
Yxy	3.6196, 0.4064, 0.4014
Android (android.graphics.Color)	4282528542 (0xFF42331E)
YUV	53.0910, -11.3839, 11.3212
Hunter-Lab	19.0254, 1.0909, 7.9146

Details

The Hex color **42331E** is a dark color, and the websafe version is hex **333333**. A complement of this color would be **1E2D42**, and the grayscale version is **353535**.

A 20% lighter version of the original color is **73614A**, and **140600** is the 20% darker color. If you saturate the color by 10%, you get **423017**, and if you desaturate by 10%, it is **423625**.

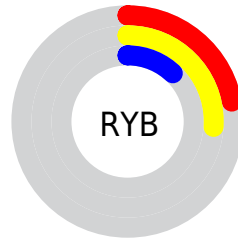
Distribution



Red (26%)

Green (20%)

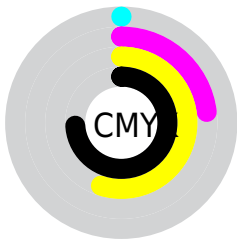
Blue (12%)



Red (22%)

Yellow (26%)

Blue (12%)

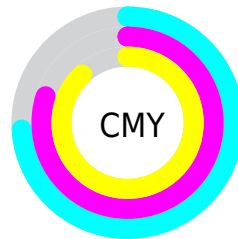


Cyan (0%)

Magenta (23%)

Yellow (55%)

Black (74%)



Cyan (74%)

Magenta (80%)

Yellow (88%)

Brightness & Saturation Gradients

These gradients show how the Hex color 42331E changes by changing the brightness by 10 percent. The first figure shows a shift by +10% for each color and the second figure -10%.

Similar to the brightness gradients but the following saturation gradients show a change of the Hex color 42331E by changing the saturation by 10% instead.

■ 42331E

■ 42331E

FFFFFF

■ 2C1E06

■ 73614A

■ 140600

■ 8D7A62

■ 000000

■ A8947B

■ C3AE95

■ DFCAB0

■ FCE6CB

■ FFFFE7

■ 42331E

■ 42331E

■ 423017

■ 423625

■ 422E11

■ 42392B

■ 422B0A

■ 423B32

■ 422804

■ 423E38

■ 422700

■ 42413F

■ 424446

■ 42464C

■ 424953

■ 424C59

Harmonies

Analogous

The Analogous color harmony consists of three colors that are next to each other on the color wheel.



4A2F24



42331E



36371E

Triad

The Triadic color harmony groups three colors that are evenly spaced from another and form a triangle on the color wheel.



42331E



0A3C3C



403046

Complementary

The Complementary color scheme is a pair of colors which are on the opposite of each other on the color wheel.



42331E



1E2D42

Split Complementary

Split-complementary colors differ from the complementary color scheme. The scheme consists of three colors, the original color and two neighbors of the complement color.



30344C



42331E



093B47

Square

The Square scheme is like the rectangle color scheme, but the four colors are evenly spaced on the color wheel.



42331E



1A3C30



1C384D



4A2D3B

Rectangle

The Rectangle color scheme consists of four colors that form a rectangle on the color wheel.



42331E



2E3922



1C384D



3B3149

Sweetspot

The Sweet Spot groups the original color and five complimentary colors.



42331E



575149



421E2D



2B2823



ABABAB



2B2B2B

Same Dimension

The Same Dimension uses a secret algorithm to generate beautiful new colors.



42331E



573F1E



3F421E



21201E



613900



E08300

Inverse Universe

The Inverse Universe completely reimagines the original color for something new.



1E2D42



1E3657



211E42



1E1F21



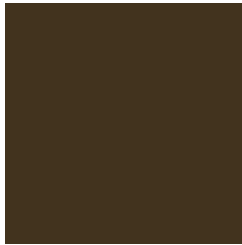
002861



005EE0

Previews

White Background



This preview shows how the Hex color 42331E looks on a white background.

Color Contrast Check

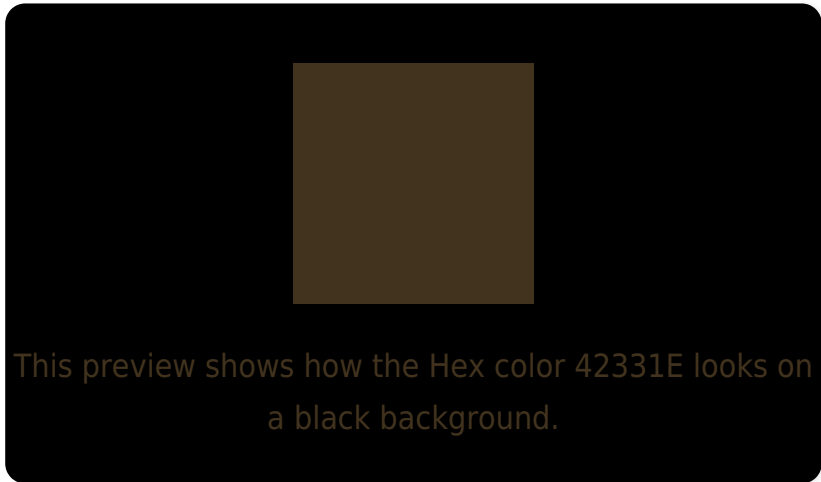
Large Text (above 18pt) WCAG AA ✓ Pass

Any Text WCAG AA ✓ Pass

Large Text (above 18pt) WCAG AAA ✓ Pass

Any Text WCAG AAA ✓ Pass

Black Background



Color Contrast Check

Large Text (above 18pt) WCAG AA × Fail

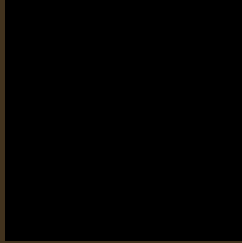
Any Text WCAG AA × Fail

Large Text (above 18pt) WCAG AAA × Fail

Any Text WCAG AAA × Fail

If you want to check with other color combinations, try the [Color Contrast Checker](#).

Hex 42331E Background



This preview shows how black text looks on a background with the Hex color 42331E.

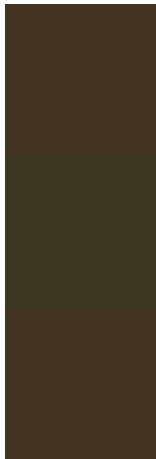


This preview shows how white text looks on a background with the Hex color 42331E.

Color Blindness Simulation

Color vision deficiency is a very complex topic, and I could not describe the different causes any better than Wikipedia does, so if you want to learn more, you should check out their [article about color blindness](#).

Dichromacy



Original Color
42331E

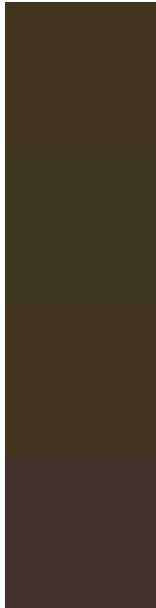
Protanopia
3B361F

Deuteranopia
42331E



Tritanopia
443034

Trichromacy



Original Color
42331E

Protanomaly
3E351F

Deuteranomaly
42331E

Tritanomaly
43312C

Monochromacy



Original Color
42331E

Achromatopsia
353535

Achromatomaly
3A342D

CSS Examples

Text

The CSS property to change the color of the text to Hex 42331E is called "color". The color property can be set on classes, ids or directly on the HTML element.

This example shows how text in the color #42331E looks like.

```
.text, #text, p{  
    color:#42331E  
}
```

If you want to add a text shadow in that color use the text-shadow property, you can generate a text shadow directly with our [CSS Text Shadow Generator](#).

Here you see how black text with a 4 pixel #42331E colored shadow looks like.

```
.shadow{ text-shadow: 4px 4px 2px #42331E
}
```

Border

The CSS property to change the border of an element to Hex 42331E is called "border". The border property can be set on classes, ids or directly on the HTML element.

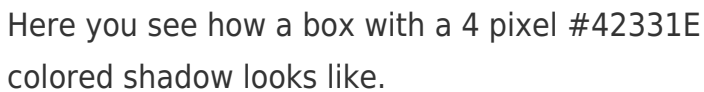
This example shows the color as border, it can be applied via the CSS property "border" or "border-color".

```
.border, #border, table{ border:4px solid
#42331E }
```

If only the border color should be changed use the property `border-color`.

```
.border{ border-color:#42331E }
```

If you want to add a box shadow in that color use:



Here you see how a box with a 4 pixel #42331E colored shadow looks like.

```
.boxshadow{ -moz-box-shadow:4px 4px 4px  
4px #42331E; -webkit-box-shadow:4px 4px  
4px 4px #42331E; box-shadow:4px 4px 4px  
4px #42331E }
```

Background

The CSS property to change the background color of an element to Hex 42331E is called "background". The background property can be set on classes, ids or directly on the HTML element.

```
.background, #background, body{  
background:#42331E }
```

If only the background color should be changed can be used:

```
.background{ background-color:#42331E }
```

This example shows the color as background, it is applied via the CSS property "background".

To optimize and compress your CSS code, you can use our [online CSS compressor and optimizer](#) based on csstidy. If you want to create a linear or radial gradient as background or border, check our [CSS Gradient Generator](#).

Hey! You found this booklet interesting? Support Converting Colors with the new Membership Option!

The pro membership hides all ads, plus gives you double the colors in the color bucket, and more awesome pro features!

[Learn more, Memberships starting at \\$2.50/m!](#)

**Follow me
on Twitter!**

@ConvertingColor