

Converting Colors

Hex(431B1A)

Have a look what the booklet for
Hex(431B1A) contains.

Hex(431B1A)	3
<i>Conversions</i>	4
<i>Details</i>	6
<i>Harmonies</i>	11
<i>Previews</i>	23
<i>Color Blindness Simulation</i>	26
<i>CSS Examples</i>	29

Color

Hex(431B1A)

Conversions

Conversions Part 1

Format	Color
Hex	431B1A
RGB	67, 27, 26
RGB Percent	26%, 11%, 10%
CMY	0.7373, 0.8941, 0.8980
CMYK	0.00, 0.60, 0.61, 0.74
HSL	1°, 44%, 18%
HSV	1°, 61%, 26%
XYZ	2.8931, 2.0517, 1.2208
YIQ	38.8460, 24.1610, 8.1690

Conversions

Conversions Part 2

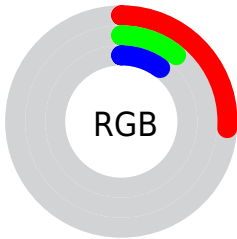
Format	Color
RYB	67, 27, 26
Decimal	4397850
CIELab	15.76, 19.23, 9.99
CIELCh	16, 21.673, 27.444
Yxy	2.0517, 0.4692, 0.3328
Android (android.graphics.Color)	4282587930 (0xFF431B1A)
YUV	38.8460, -6.3331, 24.6911
Hunter-Lab	14.3239, 10.9864, 4.9735

Details

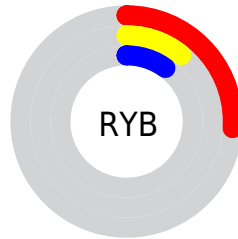
The Hex color **431B1A** is a dark color, and the websafe version is hex **330000**. A complement of this color would be **1A4243**, and the grayscale version is **272727**.

A 20% lighter version of the original color is **764845**, and **020000** is the 20% darker color. If you saturate the color by 10%, you get **431413**, and if you desaturate by 10%, it is **432221**.

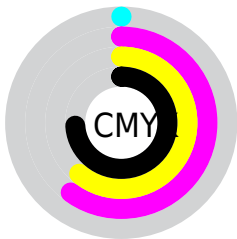
Distribution



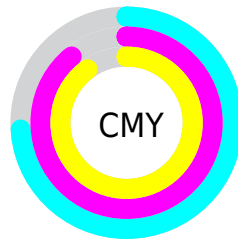
- Red (26%)
- Green (11%)
- Blue (10%)



- Red (26%)
- Yellow (11%)
- Blue (10%)



- Cyan (0%)
- Magenta (60%)
- Yellow (61%)
- Black (74%)



- Cyan (74%)
- Magenta (89%)
- Yellow (90%)

Brightness & Saturation Gradients

These gradients show how the Hex color 431B1A changes by changing the brightness by 10 percent. The first figure shows a shift by +10% for each color and the second figure -10%.

Similar to the brightness gradients but the following saturation gradients show a change of the Hex color 431B1A by changing the saturation by 10% instead.

 431B1A

 431B1A

FFFFFFD

 2D0400

 764845

 020000

 90605D

 000000

 AC7975

 C7938F

 E4AEA9

 FFC9C4

 FFE5E0

 431B1A

 431B1A

■ 431413

■ 432221

■ 430E0D

■ 432827

■ 430706

■ 432F2E

■ 430200

■ 433535

■ 433C3C

■ 434242

■ 434949

■ 434F50

■ 435656

Harmonies

Analogous

The Analogous color harmony consists of three colors that are next to each other on the color wheel.



421A29



431B1A



3D200C

Triad

The Triadic color harmony groups three colors that are evenly spaced from another and form a triangle on the color wheel.



431B1A



0D2D16



002946

Complementary

The Complementary color scheme is a pair of colors which are on the opposite of each other on the color wheel.



431B1A



1A4243

Split Complementary

Split-complementary colors differ from the complementary color scheme. The scheme consists of three colors, the original color and two neighbors of the complement color.



002D41



431B1A



002F25

Square

The Square scheme is like the rectangle color scheme, but the four colors are evenly spaced on the color wheel.



431B1A



222B08



002F35



262443

Rectangle

The Rectangle color scheme consists of four colors that form a rectangle on the color wheel.



431B1A



362405



002F35



002B45

Sweetspot

The Sweet Spot groups the original color and five complimentary colors.



431B1A



574747



431A42



2B2222



ABABAB



2B2B2B

Same Dimension

The Same Dimension uses a secret algorithm to generate beautiful new colors.



431B1A



571917



432F1A



211E1E



610200



E00500

Inverse Universe

The Inverse Universe completely reimagines the original color for something new.



1A4243



175557



1A2E43



1E2121



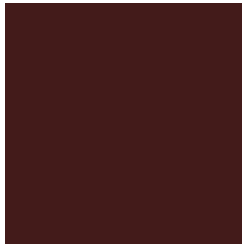
005F61



00DBE0

Previews

White Background



This preview shows how the Hex color 431B1A looks on a white background.

Color Contrast Check

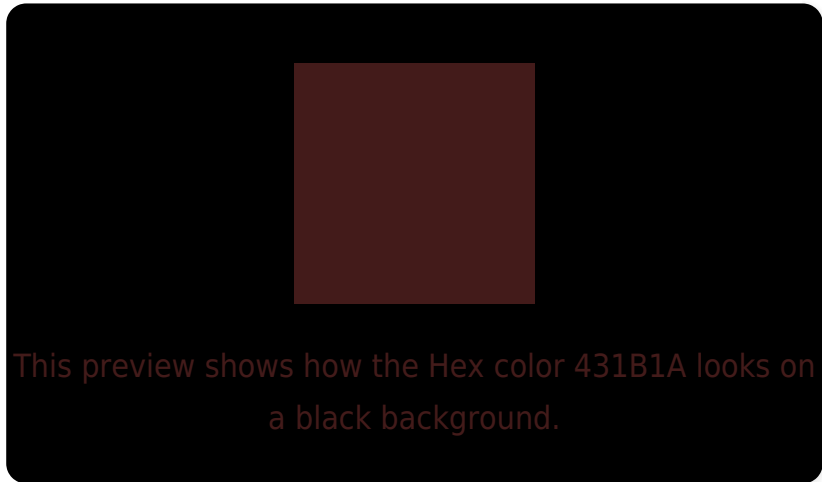
Large Text (above 18pt) WCAG AA ✓ Pass

Any Text WCAG AA ✓ Pass

Large Text (above 18pt) WCAG AAA ✓ Pass

Any Text WCAG AAA ✓ Pass

Black Background



Color Contrast Check

Large Text (above 18pt) WCAG AA × Fail

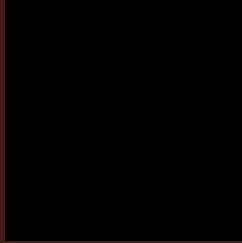
Any Text WCAG AA × Fail

Large Text (above 18pt) WCAG AAA × Fail

Any Text WCAG AAA × Fail

If you want to check with other color combinations, try the [Color Contrast Checker](#).

Hex 431B1A Background



This preview shows how black text looks on a background with the Hex color 431B1A.



This preview shows how white text looks on a background with the Hex color 431B1A.

Color Blindness Simulation

Color vision deficiency is a very complex topic, and I could not describe the different causes any better than Wikipedia does, so if you want to learn more, you should check out their [article about color blindness](#).

Dichromacy



Original Color
431B1A

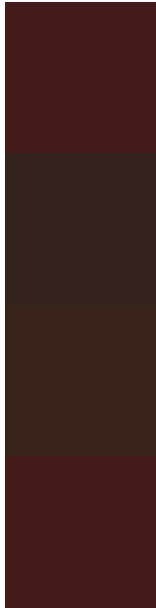
Protanopia
2B281F

Deuteranopia
312618



Tritanopia
431B1C

Trichromacy



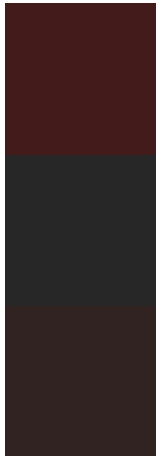
Original Color
431B1A

Protanomaly
34231D

Deuteranomaly
382219

Tritanomaly
431B1B

Monochromacy



Original Color
431B1A

Achromatopsia
272727

Achromatomaly
312322

CSS Examples

Text

The CSS property to change the color of the text to Hex 431B1A is called "color". The color property can be set on classes, ids or directly on the HTML element.

This example shows how text in the color #431B1A looks like.

```
.text, #text, p{  
    color:#431B1A  
}
```

If you want to add a text shadow in that color use the text-shadow property, you can generate a text shadow directly with our [CSS Text Shadow Generator](#).

Here you see how black text with a 4 pixel #431B1A colored shadow looks like.

```
.shadow{ text-shadow: 4px 4px 2px #431B1A
}
```

Border

The CSS property to change the border of an element to Hex 431B1A is called "border". The border property can be set on classes, ids or directly on the HTML element.

This example shows the color as border, it can be applied via the CSS property "border" or "border-color".

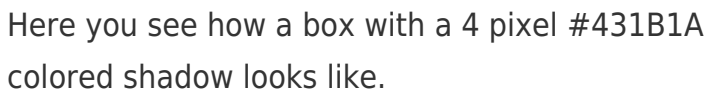
```
.border, #border, table{ border:4px solid
#431B1A }
```

If only the border color should be changed use the property `border-color`.

```
.border{ border-color:#431B1A }
```

If you want to add a box shadow in that color use:

Here you see how a box with a 4 pixel #431B1A colored shadow looks like.

A rectangular box with a dark red border and a dark red shadow. The box is white with a thin dark red border. Below and to the right of the box is a dark red shadow, creating a 3D effect. The shadow is rectangular and matches the color of the border.

```
.boxshadow{ -moz-box-shadow:4px 4px 4px  
4px #431B1A; -webkit-box-shadow:4px 4px  
4px 4px #431B1A; box-shadow:4px 4px 4px  
4px #431B1A }
```

Background

The CSS property to change the background color of an element to Hex 431B1A is called "background". The background property can be set on classes, ids or directly on the HTML element.

```
.background, #background, body{  
background:#431B1A }
```

If only the background color should be changed can be used:

```
.background{ background-color:#431B1A }
```

This example shows the color as background, it is applied via the CSS property "background".

To optimize and compress your CSS code, you can use our [online CSS compressor and optimizer](#) based on csstidy. If you want to create a linear or radial gradient as background or border, check our [CSS Gradient Generator](#).

Hey! You found this booklet interesting? Support Converting Colors with the new Membership Option!

The pro membership hides all ads, plus gives you double the colors in the color bucket, and more awesome pro features!

[Learn more, Memberships starting at \\$2.50/m!](#)

**Follow me
on Twitter!**

@ConvertingColor