

Converting Colors

Hex(431B1B)

Have a look what the booklet for
Hex(431B1B) contains.

Hex(431B1B)	3
<i>Conversions</i>	4
<i>Details</i>	6
<i>Harmonies</i>	11
<i>Previews</i>	23
<i>Color Blindness Simulation</i>	26
<i>CSS Examples</i>	29

Color

Hex(431B1B)

Conversions

Conversions Part 1

Format	Color
Hex	431B1B
RGB	67, 27, 27
RGB Percent	26%, 11%, 11%
CMY	0.7373, 0.8941, 0.8941
CMYK	0.00, 0.60, 0.60, 0.74
HSL	0°, 43%, 18%
HSV	0°, 60%, 26%
XYZ	2.9045, 2.0563, 1.2807
YIQ	38.9600, 23.8400, 8.4800

Conversions

Conversions Part 2

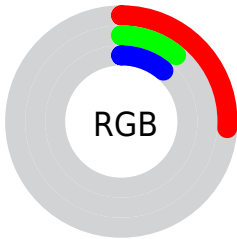
Format	Color
RYB	67, 27, 27
Decimal	4397851
CIELab	15.78, 19.34, 9.31
CIElCh	16, 21.461, 25.705
Yxy	2.0563, 0.4654, 0.3295
Android (android.graphics.Color)	4282587931 (0xFF431B1B)
YUV	38.9600, -5.8963, 24.5911
Hunter-Lab	14.3398, 11.0604, 4.7425

Details

The Hex color **431B1B** is a dark color, and the websafe version is hex **330000**. A complement of this color would be **1B4343**, and the grayscale version is **272727**.

A 20% lighter version of the original color is **764846**, and **030000** is the 20% darker color. If you saturate the color by 10%, you get **431414**, and if you desaturate by 10%, it is **432222**.

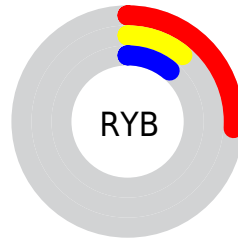
Distribution



Red (26%)

Green (11%)

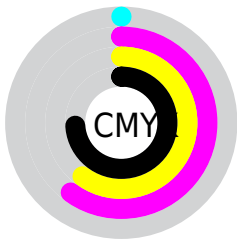
Blue (11%)



Red (26%)

Yellow (11%)

Blue (11%)

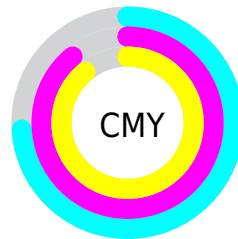


Cyan (0%)

Magenta (60%)

Yellow (60%)

Black (74%)



Cyan (74%)

Magenta (89%)

Yellow (89%)

Brightness & Saturation Gradients

These gradients show how the Hex color 431B1B changes by changing the brightness by 10 percent. The first figure shows a shift by +10% for each color and the second figure -10%.

Similar to the brightness gradients but the following saturation gradients show a change of the Hex color 431B1B by changing the saturation by 10% instead.

■ 431B1B

■ 431B1B

FFFFFFE

■ 2C0400

■ 764846

■ 030000

■ 90605E

■ 000000

■ AB7976

■ C79390

■ E4AEAA

■ FFC9C6

■ FFE5E2

■ 431B1B

■ 431B1B

■ 431414

■ 432222

■ 430E0E

■ 432828

■ 430707

■ 432F2F

■ 430000

■ 433636

■ 433D3D

■ 434343

■ 434A4A

■ 435151

■ 435757

Harmonies

Analogous

The Analogous color harmony consists of three colors that are next to each other on the color wheel.



421A2A



431B1B



3D200E

Triad

The Triadic color harmony groups three colors that are evenly spaced from another and form a triangle on the color wheel.



431B1B



0F2D15



002A46

Complementary

The Complementary color scheme is a pair of colors which are on the opposite of each other on the color wheel.



431B1B



1B4343

Split Complementary

Split-complementary colors differ from the complementary color scheme. The scheme consists of three colors, the original color and two neighbors of the complement color.



002D40



431B1B



002F25

Square

The Square scheme is like the rectangle color scheme, but the four colors are evenly spaced on the color wheel.



431B1B



232A08



002F34



242443

Rectangle

The Rectangle color scheme consists of four colors that form a rectangle on the color wheel.



431B1B



362406



002F34



002B45

Sweetspot

The Sweet Spot groups the original color and five complimentary colors.



431B1B



574747



431B43



2B2222



ABABAB



2B2B2B

Same Dimension

The Same Dimension uses a secret algorithm to generate beautiful new colors.



431B1B



571818



432F1B



211E1E



610000



E00000

Inverse Universe

The Inverse Universe completely reimagines the original color for something new.



1B4343



185757



1B2F43



1E2121



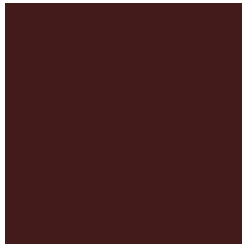
006161



00E0E0

Previews

White Background



This preview shows how the Hex color 431B1B looks on a white background.

Color Contrast Check

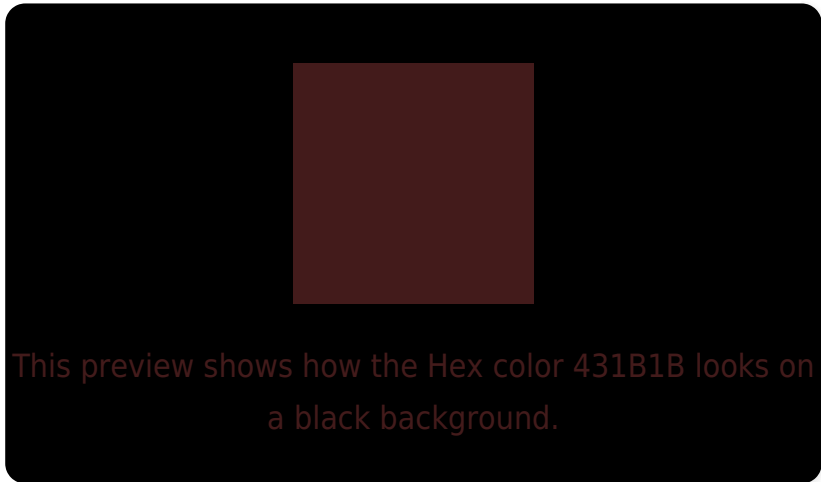
Large Text (above 18pt) WCAG AA ✓ Pass

Any Text WCAG AA ✓ Pass

Large Text (above 18pt) WCAG AAA ✓ Pass

Any Text WCAG AAA ✓ Pass

Black Background



Color Contrast Check

Large Text (above 18pt) WCAG AA × Fail

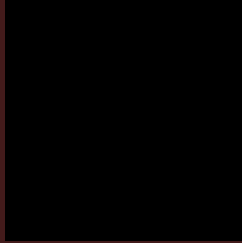
Any Text WCAG AA × Fail

Large Text (above 18pt) WCAG AAA × Fail

Any Text WCAG AAA × Fail

If you want to check with other color combinations, try the [Color Contrast Checker](#).

Hex 431B1B Background



This preview shows how black text looks on a background with the Hex color 431B1B.



This preview shows how white text looks on a background with the Hex color 431B1B.

Color Blindness Simulation

Color vision deficiency is a very complex topic, and I could not describe the different causes any better than Wikipedia does, so if you want to learn more, you should check out their [article about color blindness](#).

Dichromacy



Original Color
431B1B

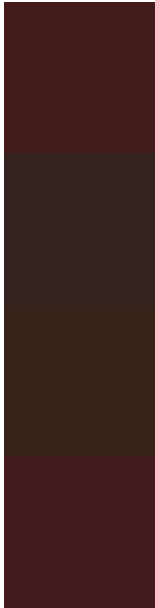
Protanopia
2B2821

Deuteranopia
312719



Tritanopia
431B1C

Trichromacy



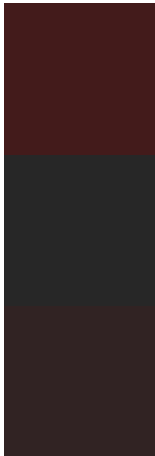
Original Color
431B1B

Protanomaly
34231F

Deuteranomaly
38231A

Tritanomaly
431B1C

Monochromacy



Original Color
431B1B

Achromatopsia
272727

Achromatomaly
312323

CSS Examples

Text

The CSS property to change the color of the text to Hex 431B1B is called "color". The color property can be set on classes, ids or directly on the HTML element.

This example shows how text in the color #431B1B looks like.

```
.text, #text, p{  
    color:#431B1B  
}
```

If you want to add a text shadow in that color use the text-shadow property, you can generate a text shadow directly with our [CSS Text Shadow Generator](#).

Here you see how black text with a 4 pixel #431B1B colored shadow looks like.

```
.shadow{ text-shadow: 4px 4px 2px #431B1B
}
```

Border

The CSS property to change the border of an element to Hex 431B1B is called "border". The border property can be set on classes, ids or directly on the HTML element.

This example shows the color as border, it can be applied via the CSS property "border" or "border-color".

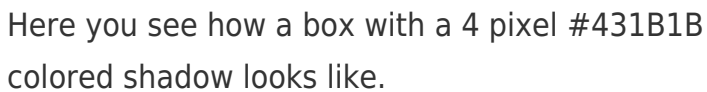
```
.border, #border, table{ border:4px solid
#431B1B }
```

If only the border color should be changed use the property `border-color`.

```
.border{ border-color:#431B1B }
```

If you want to add a box shadow in that color use:

Here you see how a box with a 4 pixel #431B1B colored shadow looks like.

A rectangular box with a dark red border and a dark red shadow. The shadow is visible on the right and bottom edges of the box, creating a 3D effect. The text inside the box is black and reads: "Here you see how a box with a 4 pixel #431B1B colored shadow looks like."

```
.boxshadow{ -moz-box-shadow:4px 4px 4px  
4px #431B1B; -webkit-box-shadow:4px 4px  
4px 4px #431B1B; box-shadow:4px 4px 4px  
4px #431B1B }
```

Background

The CSS property to change the background color of an element to Hex 431B1B is called "background". The background property can be set on classes, ids or directly on the HTML element.

```
.background, #background, body{  
background:#431B1B }
```

If only the background color should be changed can be used:

```
.background{ background-color:#431B1B }
```

This example shows the color as background, it is applied via the CSS property "background".

To optimize and compress your CSS code, you can use our [online CSS compressor and optimizer](#) based on csstidy. If you want to create a linear or radial gradient as background or border, check our [CSS Gradient Generator](#).

Hey! You found this booklet interesting? Support Converting Colors with the new Membership Option!

The pro membership hides all ads, plus gives you double the colors in the color bucket, and more awesome pro features!

[Learn more, Memberships starting at \\$2.50/m!](#)

**Follow me
on Twitter!**

@ConvertingColor