

# Converting Colors

Hex(431F10)

Have a look what the booklet for  
Hex(431F10) contains.

<b>Hex(431F10)</b> .....	3
<b><i>Conversions</i></b> .....	4
<b><i>Details</i></b> .....	6
<b><i>Harmonies</i></b> .....	11
<b><i>Previews</i></b> .....	23
<b><i>Color Blindness Simulation</i></b> .....	26
<b><i>CSS Examples</i></b> .....	29

**Color**

**Hex(431F10)**

# Conversions

## Conversions Part 1

Format	Color
Hex	431F10
RGB	67, 31, 16
RGB Percent	26%, 12%, 6%
CMY	0.7373, 0.8784, 0.9373
CMYK	0.00, 0.54, 0.76, 0.74
HSL	18°, 61%, 16%
HSV	18°, 76%, 26%
XYZ	2.8983, 2.2107, 0.7642
YIQ	40.0540, 26.2710, 2.9670

# Conversions

## Conversions Part 2

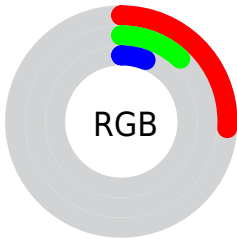
<b>Format</b>	<b>Color</b>
<b>RYB</b>	67, 37, 16
Decimal	4398864
CIELab	16.56, 15.88, 17.61
CIElCh	17, 23.716, 47.966
Yxy	2.2107, 0.4935, 0.3764
Android (android.graphics.Color)	4282588944 (0xFF431F10)
YUV	40.0540, -11.8586, 23.6316
Hunter-Lab	14.8683, 8.7750, 7.3606

# Details

The Hex color **431F10** is a dark color, and the websafe version is hex **663333**. A complement of this color would be **103443**, and the grayscale version is **282828**.

A 20% lighter version of the original color is **764C3B**, and **030000** is the 20% darker color. If you saturate the color by 10%, you get **431A09**, and if you desaturate by 10%, it is **432417**.

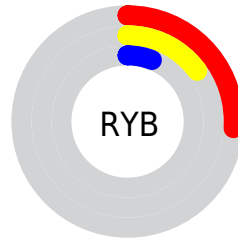
# Distribution



 Red (26%)

 Green (12%)

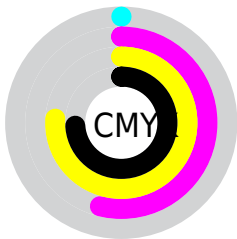
 Blue (6%)



 Red (26%)

 Yellow (15%)

 Blue (6%)

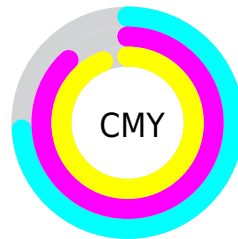


 Cyan (0%)

 Magenta (54%)

 Yellow (76%)

 Black (74%)



 Cyan (74%)

 Magenta (88%)

 Yellow (94%)

# Brightness & Saturation Gradients

These gradients show how the Hex color 431F10 changes by changing the brightness by 10 percent. The first figure shows a shift by +10% for each color and the second figure -10%.

Similar to the brightness gradients but the following saturation gradients show a change of the Hex color 431F10 by changing the saturation by 10% instead.



 431F10

 431F10

 FFFFF0

 2B0A00

 764C3B

 030000

 916452

 000000

 AC7D6A

 C89783

 E5B29D

 FFCDB8

 FFE9D4

 431F10

 431F10

■ 431A09

■ 432417

■ 431603

■ 43281D

■ 431400

■ 432D24

■ 43322B

■ 433732

■ 433B38

■ 43403F

■ 434546

■ 434A4C

# Harmonies

## Analogous

The Analogous color harmony consists of three colors that are next to each other on the color wheel.



481A1F



431F10



382602

# Triad

The Triadic color harmony groups three colors that are evenly spaced from another and form a triangle on the color wheel.



431F10



003121



1D2749

# Complementary

The Complementary color scheme is a pair of colors which are on the opposite of each other on the color wheel.



431F10



103443

# Split Complementary

Split-complementary colors differ from the complementary color scheme. The scheme consists of three colors, the original color and two neighbors of the complement color.



002D4A



431F10



003133

# Square

The Square scheme is like the rectangle color scheme, but the four colors are evenly spaced on the color wheel.



431F10



142F11



003042



372040

# Rectangle

The Rectangle color scheme consists of four colors that form a rectangle on the color wheel.



431F10



2E2901



003042



0F294A



# Sweetspot

The Sweet Spot groups the original color and five complimentary colors.



431F10



574943



431035



2B231F



ABABAB



2B2B2B



# Same Dimension

The Same Dimension uses a secret algorithm to generate beautiful new colors.



431F10



571F08



433810



211F1E



611C00



E04200



# Inverse Universe

The Inverse Universe completely reimagines the original color for something new.



103443



083F57



101B43



1E2021



004461

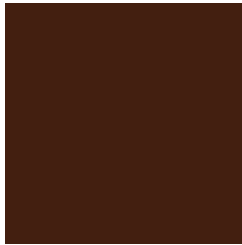


009EE0



# Previews

## White Background



This preview shows how the Hex color 431F10 looks on a white background.

## Color Contrast Check

Large Text (above 18pt) WCAG AA ✓ Pass

Any Text WCAG AA ✓ Pass

Large Text (above 18pt) WCAG AAA ✓ Pass

Any Text WCAG AAA ✓ Pass

# Black Background



## Color Contrast Check

Large Text (above 18pt) WCAG AA × Fail

Any Text WCAG AA × Fail

Large Text (above 18pt) WCAG AAA × Fail

Any Text WCAG AAA × Fail

If you want to check with other color combinations, try the [Color Contrast Checker](#).



## Hex 431F10 Background



This preview shows how black text looks on a background with the Hex color 431F10.

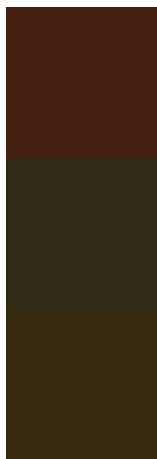


This preview shows how white text looks on a background with the Hex color 431F10.

# Color Blindness Simulation

Color vision deficiency is a very complex topic, and I could not describe the different causes any better than Wikipedia does, so if you want to learn more, you should check out their [article about color blindness](#).

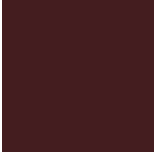
## Dichromacy



**Original Color**  
431F10

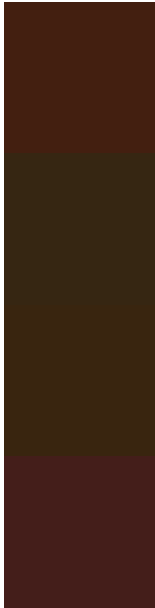
**Protanopia**  
2E2A13

**Deuteranopia**  
34280E



**Tritanopia**  
441D1F

# Trichromacy



**Original Color**  
431F10

**Protanomaly**  
362612

**Deuteranomaly**  
39250F

**Tritanomaly**  
441E1A

# Monochromacy



**Original Color**  
431F10

**Achromatopsia**  
282828

**Achromatomaly**  
32251F

# CSS Examples

## Text

The CSS property to change the color of the text to Hex 431F10 is called "color". The color property can be set on classes, ids or directly on the HTML element.

This example shows how text in the color #431F10 looks like.

```
.text, #text, p{  
    color:#431F10  
}
```

If you want to add a text shadow in that color use the text-shadow property, you can generate a text shadow directly with our [CSS Text Shadow Generator](#).

Here you see how black text with a 4 pixel #431F10 colored shadow looks like.

```
.shadow{ text-shadow: 4px 4px 2px #431F10
}
```

## Border

The CSS property to change the border of an element to Hex 431F10 is called "border". The border property can be set on classes, ids or directly on the HTML element.

This example shows the color as border, it can be applied via the CSS property "border" or "border-color".

```
.border, #border, table{ border:4px solid
#431F10 }
```

If only the border color should be changed use the property `border-color`.

```
.border{ border-color:#431F10 }
```

If you want to add a box shadow in that color use:

Here you see how a box with a 4 pixel #431F10 colored shadow looks like.

```
.boxshadow{ -moz-box-shadow:4px 4px 4px  
4px #431F10; -webkit-box-shadow:4px 4px  
4px 4px #431F10; box-shadow:4px 4px 4px  
4px #431F10 }
```

# Background

The CSS property to change the background color of an element to Hex 431F10 is called "background". The background property can be set on classes, ids or directly on the HTML element.

```
.background, #background, body{  
background:#431F10 }
```

If only the background color should be changed can be used:

```
.background{ background-color:#431F10 }
```

This example shows the color as background, it is applied via the CSS property "background".

To optimize and compress your CSS code, you can use our [online CSS compressor and optimizer](#) based on csstidy. If you want to create a linear or radial gradient as background or border, check our [CSS Gradient Generator](#).



Hey! You found this booklet interesting? Support Converting Colors with the new Membership Option!

The pro membership hides all ads, plus gives you double the colors in the color bucket, and more awesome pro features!

**[Learn more, Memberships starting at \\$2.50/m!](#)**

**Follow me  
on Twitter!**

@ConvertingColor