

# Converting Colors

Hex(43200F)

Have a look what the booklet for  
Hex(43200F) contains.

<b>Hex(43200F)</b> .....	3
<b><i>Conversions</i></b> .....	4
<b><i>Details</i></b> .....	6
<b><i>Harmonies</i></b> .....	11
<b><i>Previews</i></b> .....	23
<b><i>Color Blindness Simulation</i></b> .....	26
<b><i>CSS Examples</i></b> .....	29

# Color

**Hex(43200F)**

# Conversions

## Conversions Part 1

Format	Color
Hex	43200F
RGB	67, 32, 15
RGB Percent	26%, 13%, 6%
CMY	0.7373, 0.8745, 0.9412
CMYK	0.00, 0.52, 0.78, 0.74
HSL	20°, 63%, 16%
HSV	20°, 78%, 26%
XYZ	2.9175, 2.2608, 0.7345
YIQ	40.5270, 26.3170, 2.1330

# Conversions

## Conversions Part 2

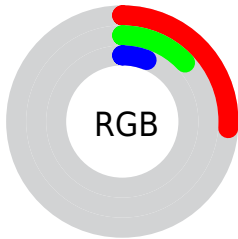
<b>Format</b>	<b>Color</b>
<a href="#">RYB</a>	<a href="#">67, 40, 15</a>
Decimal	<a href="#">4399119</a>
CIELab	<a href="#">16.80, 15.17, 18.46</a>
CIELCh	<a href="#">17, 23.894, 50.584</a>
Yxy	<a href="#">2.2608, 0.4934, 0.3824</a>
Android (android.graphics.Color)	<a href="#">4282589199 (0xFF43200F)</a>
YUV	<a href="#">40.5270, -12.5848, 23.2168</a>
Hunter-Lab	<a href="#">15.0360, 8.3219, 7.6287</a>

# Details

The Hex color **43200F** is a dark color, and the websafe version is hex **663333**. A complement of this color would be **0F3243**, and the grayscale version is **292929**.

A 20% lighter version of the original color is **764D3A**, and **040000** is the 20% darker color. If you saturate the color by 10%, you get **431B08**, and if you desaturate by 10%, it is **432516**.

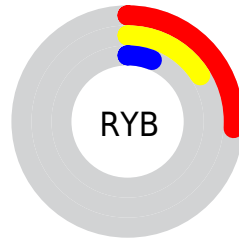
# Distribution



 Red (26%)

 Green (13%)

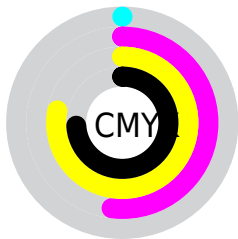
 Blue (6%)



 Red (26%)

 Yellow (16%)

 Blue (6%)

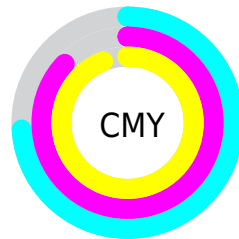


 Cyan (0%)

 Magenta (52%)

 Yellow (78%)

 Black (74%)



 Cyan (74%)

 Magenta (87%)

 Yellow (94%)

# Brightness & Saturation Gradients

These gradients show how the Hex color 43200F changes by changing the brightness by 10 percent. The first figure shows a shift by +10% for each color and the second figure -10%.

Similar to the brightness gradients but the following saturation gradients show a change of the Hex color 43200F by changing the saturation by 10% instead.



 43200F

 43200F

 FFFFEF

 2B0B00

 764D3A

 040000

 916551

 000000

 AC7E69

 C89882

 E5B39C

 FFCEB7

 FFEBD3

 43200F

 43200F

■ 431B08

■ 432516

■ 431702

■ 43291C

■ 431600

■ 432E23

■ 43322A

■ 433731

■ 433B37

■ 43403E

■ 434445

■ 43494B

# Harmonies

## Analogous

The Analogous color harmony consists of three colors that are next to each other on the color wheel.



491B1E



43200F



382702

# Triad

The Triadic color harmony groups three colors that are evenly spaced from another and form a triangle on the color wheel.



43200F



003123



202749

# Complementary

The Complementary color scheme is a pair of colors which are on the opposite of each other on the color wheel.



43200F



0F3243

# Split Complementary

Split-complementary colors differ from the complementary color scheme. The scheme consists of three colors, the original color and two neighbors of the complement color.



002D4B



43200F



003235

# Square

The Square scheme is like the rectangle color scheme, but the four colors are evenly spaced on the color wheel.



43200F



123013



003043



39203F

# Rectangle

The Rectangle color scheme consists of four colors that form a rectangle on the color wheel.



43200F



2D2A02



003043



14294B



# Sweetspot

The Sweet Spot groups the original color and five complimentary colors.



43200F



574943



430F33



2B231F



ABABAB



2B2B2B



# Same Dimension

The Same Dimension uses a secret algorithm to generate beautiful new colors.



43200F



572006



43390F



211F1E



612000



E04900



# Inverse Universe

The Inverse Universe completely reimagines the original color for something new.



0F3243



063C57



0F1943



1E2021



004161

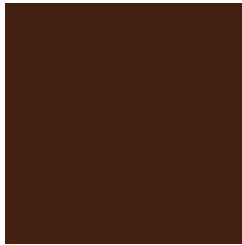


0097E0



# Previews

## White Background



This preview shows how the Hex color 43200F looks on a white background.

## Color Contrast Check

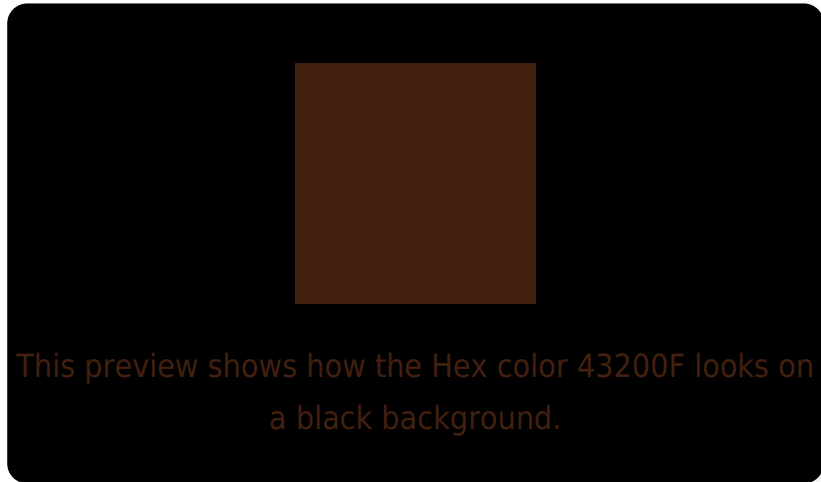
Large Text (above 18pt) WCAG AA ✓ Pass

Any Text WCAG AA ✓ Pass

Large Text (above 18pt) WCAG AAA ✓ Pass

Any Text WCAG AAA ✓ Pass

# Black Background



## Color Contrast Check

Large Text (above 18pt) WCAG AA × Fail

Any Text WCAG AA × Fail

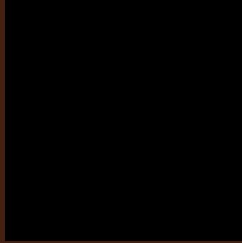
Large Text (above 18pt) WCAG AAA × Fail

Any Text WCAG AAA × Fail

If you want to check with other color combinations, try the [Color Contrast Checker](#).



## Hex 43200F Background



This preview shows how black text looks on a background with the Hex color 43200F.

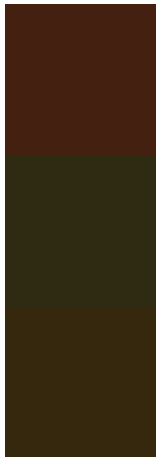


This preview shows how white text looks on a background with the Hex color 43200F.

# Color Blindness Simulation

Color vision deficiency is a very complex topic, and I could not describe the different causes any better than Wikipedia does, so if you want to learn more, you should check out their [article about color blindness](#).

## Dichromacy



**Original Color**  
43200F

**Protanopia**  
2F2A12

**Deuteranopia**  
35280D



**Tritanopia**  
441E20

# Trichromacy



**Original Color**  
43200F

**Protanomaly**  
362611

**Deuteranomaly**  
3A250E

**Tritanomaly**  
441F1A

# Monochromacy



**Original Color**  
43200F

**Achromatopsia**  
292929

**Achromatomaly**  
322620

# CSS Examples

## Text

The CSS property to change the color of the text to Hex 43200F is called "color". The color property can be set on classes, ids or directly on the HTML element.

This example shows how text in the color #43200F looks like.

```
.text, #text, p{  
    color:#43200F  
}
```

If you want to add a text shadow in that color use the text-shadow property, you can generate a text shadow directly with our [CSS Text Shadow Generator](#).

Here you see how black text with a 4 pixel #43200F colored shadow looks like.

```
.shadow{ text-shadow: 4px 4px 2px #43200F
}
```

## Border

The CSS property to change the border of an element to Hex 43200F is called "border". The border property can be set on classes, ids or directly on the HTML element.

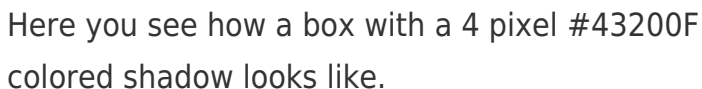
This example shows the color as border, it can be applied via the CSS property "border" or "border-color".

```
.border, #border, table{ border:4px solid
#43200F }
```

If only the border color should be changed use the property `border-color`.

```
.border{ border-color:#43200F }
```

If you want to add a box shadow in that color use:



Here you see how a box with a 4 pixel #43200F colored shadow looks like.

```
.boxshadow{ -moz-box-shadow:4px 4px 4px  
4px #43200F; -webkit-box-shadow:4px 4px  
4px 4px #43200F; box-shadow:4px 4px 4px  
4px #43200F }
```

# Background

The CSS property to change the background color of an element to Hex 43200F is called "background". The background property can be set on classes, ids or directly on the HTML element.

```
.background, #background, body{  
background:#43200F }
```

If only the background color should be changed can be used:

```
.background{ background-color:#43200F }
```

This example shows the color as background, it is applied via the CSS property "background".

To optimize and compress your CSS code, you can use our [online CSS compressor and optimizer](#) based on csstidy. If you want to create a linear or radial gradient as background or border, check our [CSS Gradient Generator](#).



Hey! You found this booklet  
interesting? Support Converting  
Colors with the new Membership  
Option!

The pro membership hides all ads, plus gives you  
double the colors in the color bucket, and more  
awesome pro features!

**[Learn more, Memberships starting at \\$2.50/m!](#)**

**Follow me  
on Twitter!**

@ConvertingColor