

Converting Colors

Hex(432C30)

Have a look what the booklet for
Hex(432C30) contains.

Hex(432C30)	3
<i>Conversions</i>	4
<i>Details</i>	6
<i>Harmonies</i>	11
<i>Previews</i>	23
<i>Color Blindness Simulation</i>	26
<i>CSS Examples</i>	29

Color

Hex(432C30)

Conversions

Conversions Part 1

Format	Color
Hex	432C30
RGB	67, 44, 48
RGB Percent	26%, 17%, 19%
CMY	0.7373, 0.8275, 0.8118
CMYK	0.00, 0.34, 0.28, 0.74
HSL	350°, 21%, 22%
HSV	350°, 34%, 26%
XYZ	3.7489, 3.2081, 3.2179
YIQ	51.3330, 12.4240, 6.1200

Conversions

Conversions Part 2

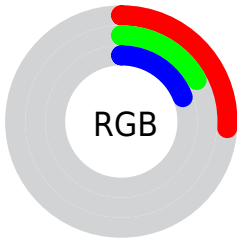
Format	Color
RYB	67, 44, 48
Decimal	4402224
CIELab	20.86, 11.33, 1.71
CIElCh	21, 11.456, 8.605
Yxy	3.2081, 0.3684, 0.3153
Android (android.graphics.Color)	4282592304 (0xFF432C30)
YUV	51.3330, -1.6432, 13.7400
Hunter-Lab	17.9110, 6.0171, 1.8856

Details

The Hex color **432C30** is a dark color, and the websafe version is hex **333333**. A complement of this color would be **2C433F**, and the grayscale version is **333333**.

A 20% lighter version of the original color is **745A5E**, and **1A0000** is the 20% darker color. If you saturate the color by 10%, you get **43252A**, and if you desaturate by 10%, it is **433336**.

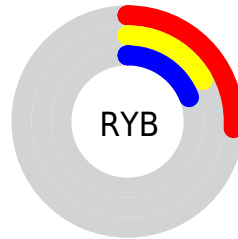
Distribution



Red (26%)

Green (17%)

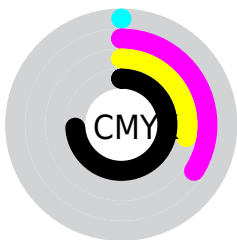
Blue (19%)



Red (26%)

Yellow (17%)

Blue (19%)

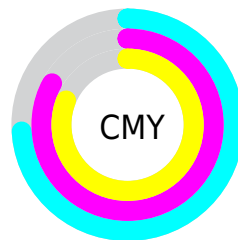


Cyan (0%)

Magenta (34%)

Yellow (28%)

Black (74%)



Cyan (74%)

Magenta (83%)

Yellow (81%)

Brightness & Saturation Gradients

These gradients show how the Hex color 432C30 changes by changing the brightness by 10 percent. The first figure shows a shift by +10% for each color and the second figure -10%.

Similar to the brightness gradients but the following saturation gradients show a change of the Hex color 432C30 by changing the saturation by 10% instead.

■ 432C30

■ 432C30

FFFFFF

■ 2C171B

■ 745A5E

■ 1A0000

■ 8D7277

■ 000000

■ A88C90

■ C3A6AB

■ E0C2C6

■ FCDDE2

■ FFFAFF

■ 432C30

■ 432C30

■ 43252A

■ 433336

■ 431F25

■ 43393B

■ 43181F

■ 434041

■ 43111A

■ 434746

■ 430B14

■ 434E4C

■ 43040F

■ 435451

■ 43000C

■ 435B57

■ 43625C

■ 436862

Harmonies

Analogous

The Analogous color harmony consists of three colors that are next to each other on the color wheel.



3F2D38



432C30



422D28

Triad

The Triadic color harmony groups three colors that are evenly spaced from another and form a triangle on the color wheel.



432C30



2C3525



203542

Complementary

The Complementary color scheme is a pair of colors which are on the opposite of each other on the color wheel.



432C30



2C433F

Split Complementary

Split-complementary colors differ from the complementary color scheme. The scheme consists of three colors, the original color and two neighbors of the complement color.



19363C



432C30



23362C

Square

The Square scheme is like the rectangle color scheme, but the four colors are evenly spaced on the color wheel.



432C30



363221



1B3734



2B3243

Rectangle

The Rectangle color scheme consists of four colors that form a rectangle on the color wheel.



432C30



402F24



1B3734



1D3540

Sweetspot

The Sweet Spot groups the original color and five complimentary colors.



432C30



574E50



3F2C43



2B2627



ABABAB



2B2B2B

Same Dimension

The Same Dimension uses a secret algorithm to generate beautiful new colors.



432C30



573339



43332C



211E1E



610011



E00027

Inverse Universe

The Inverse Universe completely reimagines the original color for something new.



432C30



573339



2C3C43



211E1E



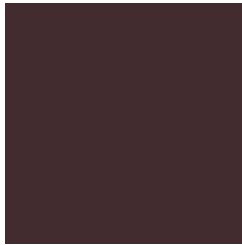
610011



E00027

Previews

White Background



This preview shows how the Hex color 432C30 looks on a white background.

Color Contrast Check

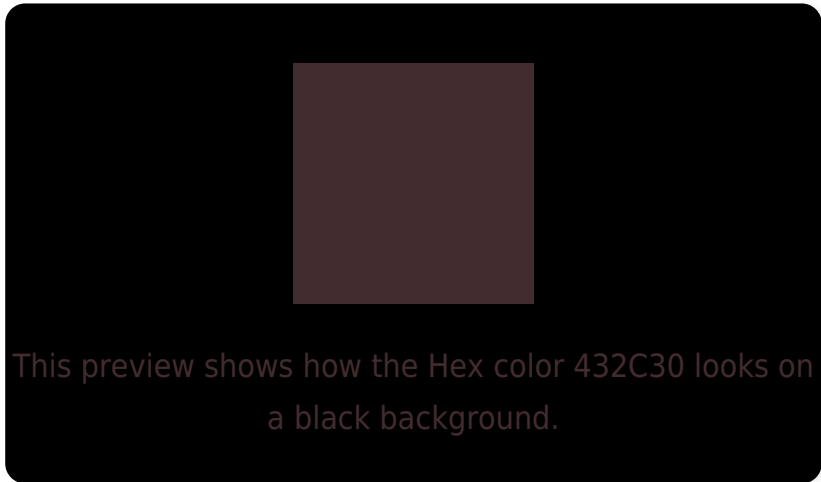
Large Text (above 18pt) WCAG AA ✓ Pass

Any Text WCAG AA ✓ Pass

Large Text (above 18pt) WCAG AAA ✓ Pass

Any Text WCAG AAA ✓ Pass

Black Background



Color Contrast Check

Large Text (above 18pt) WCAG AA × Fail

Any Text WCAG AA × Fail

Large Text (above 18pt) WCAG AAA × Fail

Any Text WCAG AAA × Fail

If you want to check with other color combinations, try the [Color Contrast Checker](#).

Hex 432C30 Background



This preview shows how black text looks on a background with the Hex color 432C30.

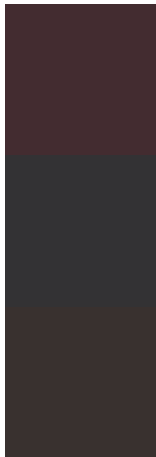


This preview shows how white text looks on a background with the Hex color 432C30.

Color Blindness Simulation

Color vision deficiency is a very complex topic, and I could not describe the different causes any better than Wikipedia does, so if you want to learn more, you should check out their [article about color blindness](#).

Dichromacy



Original Color
432C30

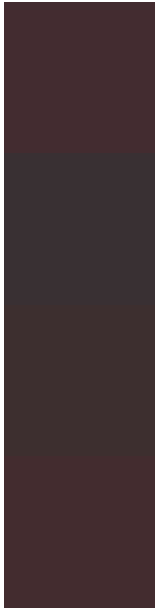
Protanopia
333234

Deuteranopia
39312F



Tritanopia
432C2F

Trichromacy



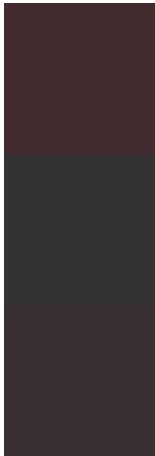
Original Color
432C30

Protanomaly
393033

Deuteranomaly
3D2F2F

Tritanomaly
432C2F

Monochromacy



Original Color
432C30

Achromatopsia
333333

Achromatomaly
393032

CSS Examples

Text

The CSS property to change the color of the text to Hex 432C30 is called "color". The color property can be set on classes, ids or directly on the HTML element.

This example shows how text in the color #432C30 looks like.

```
.text, #text, p{  
    color:#432C30  
}
```

If you want to add a text shadow in that color use the text-shadow property, you can generate a text shadow directly with our [CSS Text Shadow Generator](#).

Here you see how black text with a 4 pixel #432C30 colored shadow looks like.

```
.shadow{ text-shadow: 4px 4px 2px #432C30
}
```

Border

The CSS property to change the border of an element to Hex 432C30 is called "border". The border property can be set on classes, ids or directly on the HTML element.

This example shows the color as border, it can be applied via the CSS property "border" or "border-color".

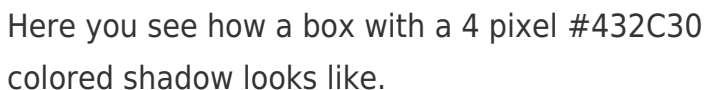
```
.border, #border, table{ border:4px solid
#432C30 }
```

If only the border color should be changed use the property `border-color`.

```
.border{ border-color:#432C30 }
```

If you want to add a box shadow in that color use:

Here you see how a box with a 4 pixel #432C30 colored shadow looks like.



```
.boxshadow{ -moz-box-shadow:4px 4px 4px  
4px #432C30; -webkit-box-shadow:4px 4px  
4px 4px #432C30; box-shadow:4px 4px 4px  
4px #432C30 }
```

Background

The CSS property to change the background color of an element to Hex 432C30 is called "background". The background property can be set on classes, ids or directly on the HTML element.

```
.background, #background, body{  
background:#432C30 }
```

If only the background color should be changed can be used:

```
.background{ background-color:#432C30 }
```

This example shows the color as background, it is applied via the CSS property "background".

To optimize and compress your CSS code, you can use our [online CSS compressor and optimizer](#) based on csstidy. If you want to create a linear or radial gradient as background or border, check our [CSS Gradient Generator](#).

Hey! You found this booklet interesting? Support Converting Colors with the new Membership Option!

The pro membership hides all ads, plus gives you double the colors in the color bucket, and more awesome pro features!

[Learn more, Memberships starting at \\$2.50/m!](#)

**Follow me
on Twitter!**

@ConvertingColor