

# Converting Colors

Hex(432C35)

Have a look what the booklet for  
Hex(432C35) contains.

<b>Hex(432C35)</b> .....	3
<b><i>Conversions</i></b> .....	4
<b><i>Details</i></b> .....	6
<b><i>Harmonies</i></b> .....	11
<b><i>Previews</i></b> .....	23
<b><i>Color Blindness Simulation</i></b> .....	26
<b><i>CSS Examples</i></b> .....	29

# Color

Hex(432C35)

# Conversions

## Conversions Part 1

Format	Color
Hex	432C35
RGB	67, 44, 53
RGB Percent	26%, 17%, 21%
CMY	0.7373, 0.8275, 0.7922
CMYK	0.00, 0.34, 0.21, 0.74
HSL	337°, 21%, 22%
HSV	337°, 34%, 26%
XYZ	3.8580, 3.2517, 3.7925
YIQ	51.9030, 10.8190, 7.6750

# Conversions

## Conversions Part 2

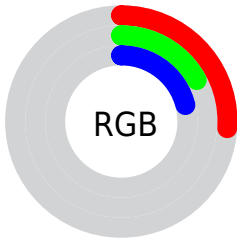
<b>Format</b>	<b>Color</b>
<b>RYB</b>	67, 44, 53
Decimal	4402229
CIELab	21.02, 12.24, -1.48
CIElCh	21, 12.334, 353.111
Yxy	3.2517, 0.3539, 0.2983
Android (android.graphics.Color)	4282592309 (0xFF432C35)
YUV	51.9030, 0.5408, 13.2401
Hunter-Lab	18.0325, 6.6331, 0.1533

# Details

The Hex color **432C35** is a dark color, and the websafe version is hex **333333**. A complement of this color would be **2C433A**, and the grayscale version is **343434**.

A 20% lighter version of the original color is **745A63**, and **1A0008** is the 20% darker color. If you saturate the color by 10%, you get **432531**, and if you desaturate by 10%, it is **433339**.

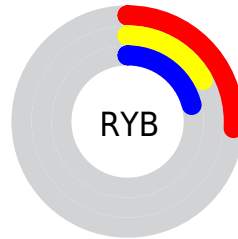
# Distribution



Red (26%)

Green (17%)

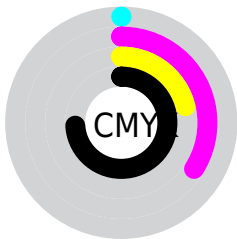
Blue (21%)



Red (26%)

Yellow (17%)

Blue (21%)

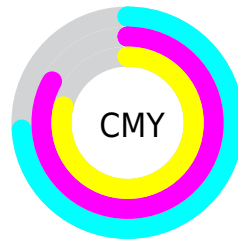


Cyan (0%)

Magenta (34%)

Yellow (21%)

Black (74%)



Cyan (74%)

Magenta (83%)

Yellow (79%)

# Brightness & Saturation Gradients

These gradients show how the Hex color 432C35 changes by changing the brightness by 10 percent. The first figure shows a shift by +10% for each color and the second figure -10%.

Similar to the brightness gradients but the following saturation gradients show a change of the Hex color 432C35 by changing the saturation by 10% instead.





432C35



432C35

FFFFFF



2C1720



745A63



1A0008



8D727C



000000



A88C96



C3A6B1



DFC2CC



FCDEE8



FFFAFF



432C35



432C35

■ 432531

■ 433339

■ 431F2D

■ 43393D

■ 431829

■ 434041

■ 431125

■ 434745

■ 430B21

■ 434E49

■ 43041D

■ 43544D

■ 43001A

■ 435B52

■ 436256

■ 43685A

# Harmonies

## Analogous

The Analogous color harmony consists of three colors that are next to each other on the color wheel.



3C2E3E



432C35



452C2C

# Triad

The Triadic color harmony groups three colors that are evenly spaced from another and form a triangle on the color wheel.



432C35



323422



193641

# Complementary

The Complementary color scheme is a pair of colors which are on the opposite of each other on the color wheel.



432C35



2C433A

# Split Complementary

Split-complementary colors differ from the complementary color scheme. The scheme consists of three colors, the original color and two neighbors of the complement color.



173739



432C35



273627

# Square

The Square scheme is like the rectangle color scheme, but the four colors are evenly spaced on the color wheel.



432C35



3B3121



1D3730



243444

# Rectangle

The Rectangle color scheme consists of four colors that form a rectangle on the color wheel.



432C35



432D27



1D3730



17373F



# Sweetspot

The Sweet Spot groups the original color and five complimentary colors.



432C35



574E51



3A2C43



2B2628



ABABAB



2B2B2B



# Same Dimension

The Same Dimension uses a secret algorithm to generate beautiful new colors.



432C35



573341



432E2C



211E1F



610026



E00058



# Inverse Universe

The Inverse Universe completely reimagines the original color for something new.



432C35



573341



2C4143



211E1F



610026

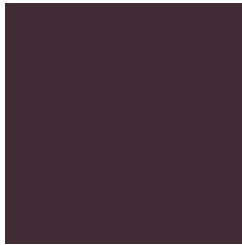


E00058



# Previews

## White Background



This preview shows how the Hex color 432C35 looks on a white background.

## Color Contrast Check

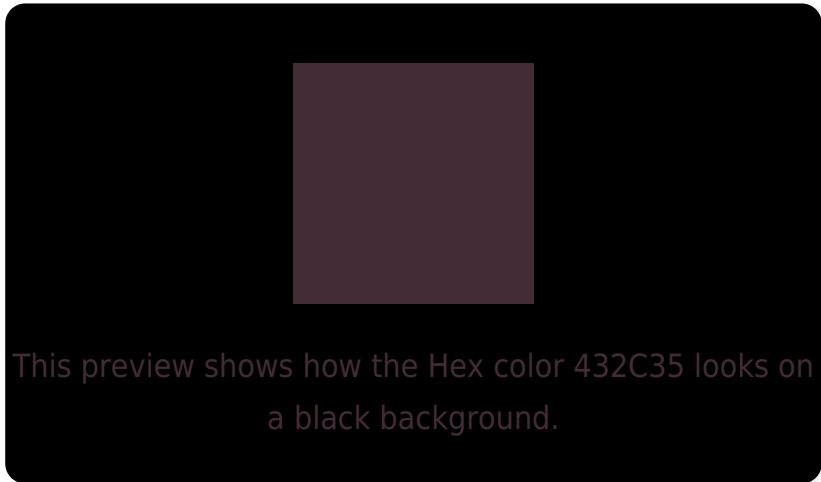
Large Text (above 18pt) WCAG AA ✓ Pass

Any Text WCAG AA ✓ Pass

Large Text (above 18pt) WCAG AAA ✓ Pass

Any Text WCAG AAA ✓ Pass

# Black Background



## Color Contrast Check

Large Text (above 18pt) WCAG AA × Fail

Any Text WCAG AA × Fail

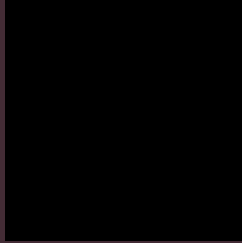
Large Text (above 18pt) WCAG AAA × Fail

Any Text WCAG AAA × Fail

If you want to check with other color combinations, try the [Color Contrast Checker](#).



## Hex 432C35 Background



This preview shows how black text looks on a background with the Hex color 432C35.



This preview shows how white text looks on a background with the Hex color 432C35.

# Color Blindness Simulation

Color vision deficiency is a very complex topic, and I could not describe the different causes any better than Wikipedia does, so if you want to learn more, you should check out their [article about color blindness](#).

## Dichromacy



**Original Color**  
432C35

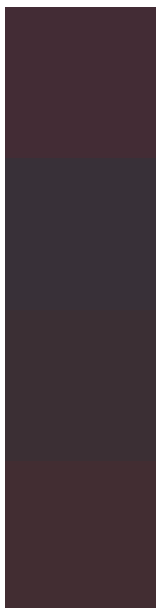
**Protanopia**  
323239

**Deuteranopia**  
373134



**Tritanopia**  
422D30

# Trichromacy



**Original Color**

432C35

**Protanomaly**

383038

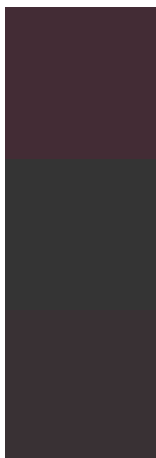
**Deuteranomaly**

3B2F34

**Tritanomaly**

422D32

# Monochromacy



**Original Color**

432C35

**Achromatopsia**

343434

**Achromatomaly**

393134

# CSS Examples

## Text

The CSS property to change the color of the text to Hex 432C35 is called "color". The color property can be set on classes, ids or directly on the HTML element.

This example shows how text in the color #432C35 looks like.

```
.text, #text, p{  
    color:#432C35  
}
```

If you want to add a text shadow in that color use the text-shadow property, you can generate a text shadow directly with our [CSS Text Shadow Generator](#).

Here you see how black text with a 4 pixel #432C35 colored shadow looks like.

```
.shadow{ text-shadow: 4px 4px 2px #432C35
}
```

## Border

The CSS property to change the border of an element to Hex 432C35 is called "border". The border property can be set on classes, ids or directly on the HTML element.

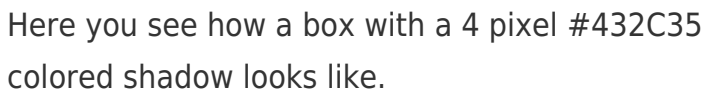
This example shows the color as border, it can be applied via the CSS property "border" or "border-color".

```
.border, #border, table{ border:4px solid
#432C35 }
```

If only the border color should be changed use the property `border-color`.

```
.border{ border-color:#432C35 }
```

If you want to add a box shadow in that color use:



Here you see how a box with a 4 pixel #432C35 colored shadow looks like.

```
.boxshadow{ -moz-box-shadow:4px 4px 4px  
4px #432C35; -webkit-box-shadow:4px 4px  
4px 4px #432C35; box-shadow:4px 4px 4px  
4px #432C35 }
```

# Background

The CSS property to change the background color of an element to Hex 432C35 is called "background". The background property can be set on classes, ids or directly on the HTML element.

```
.background, #background, body{  
background:#432C35 }
```

If only the background color should be changed can be used:

```
.background{ background-color:#432C35 }
```

This example shows the color as background, it is applied via the CSS property "background".

To optimize and compress your CSS code, you can use our [online CSS compressor and optimizer](#) based on csstidy. If you want to create a linear or radial gradient as background or border, check our [CSS Gradient Generator](#).



# Hey! You found this booklet interesting? Support Converting Colors with the new Membership Option!

The pro membership hides all ads, plus gives you double the colors in the color bucket, and more awesome pro features!

**[Learn more, Memberships starting at \\$2.50/m!](#)**

**Follow me  
on Twitter!**

@ConvertingColor