

Converting Colors

Hex(432D32)

Have a look what the booklet for
Hex(432D32) contains.

Hex(432D32)	3
<i>Conversions</i>	4
<i>Details</i>	6
<i>Harmonies</i>	11
<i>Previews</i>	23
<i>Color Blindness Simulation</i>	26
<i>CSS Examples</i>	29

Color

Hex(432D32)

Conversions

Conversions Part 1

Format	Color
Hex	432D32
RGB	67, 45, 50
RGB Percent	26%, 18%, 20%
CMY	0.7373, 0.8235, 0.8039
CMYK	0.00, 0.33, 0.25, 0.74
HSL	346°, 20%, 22%
HSV	346°, 33%, 26%
XYZ	3.8288, 3.3004, 3.4528
YIQ	52.1480, 11.5070, 6.2190

Conversions

Conversions Part 2

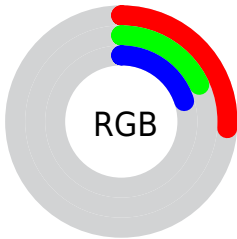
Format	Color
RYB	67, 45, 50
Decimal	4402482
CIELab	21.21, 11.02, 0.85
CIELCh	21, 11.051, 4.403
Yxy	3.3004, 0.3618, 0.3119
Android (android.graphics.Color)	4282592562 (0xFF432D32)
YUV	52.1480, -1.0590, 13.0252
Hunter-Lab	18.1669, 5.8286, 1.4480

Details

The Hex color **432D32** is a dark color, and the websafe version is hex **333333**. A complement of this color would be **2D433E**, and the grayscale version is **343434**.

A 20% lighter version of the original color is **745B60**, and **1A0003** is the 20% darker color. If you saturate the color by 10%, you get **43262D**, and if you desaturate by 10%, it is **433437**.

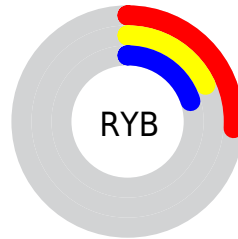
Distribution



Red (26%)

Green (18%)

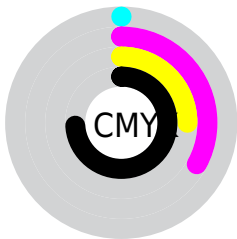
Blue (20%)



Red (26%)

Yellow (18%)

Blue (20%)

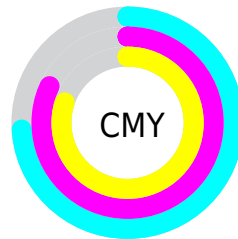


Cyan (0%)

Magenta (33%)

Yellow (25%)

Black (74%)



Cyan (74%)

Magenta (82%)

Yellow (80%)

Brightness & Saturation Gradients

These gradients show how the Hex color 432D32 changes by changing the brightness by 10 percent. The first figure shows a shift by +10% for each color and the second figure -10%.

Similar to the brightness gradients but the following saturation gradients show a change of the Hex color 432D32 by changing the saturation by 10% instead.

■ 432D32

■ 432D32

FFFFFF

■ 2C181D

■ 745B60

■ 1A0003

■ 8D7479

■ 000000

■ A88D93

■ C3A8AD

■ DFC3C8

■ FCDFE5

■ FFFBFF

■ 432D32

■ 432D32

■ 43262D

■ 433437

■ 432028

■ 433A3C

■ 431922

■ 434142

■ 43121D

■ 434847

■ 430B18

■ 434F4C

■ 430513

■ 435551

■ 43000F

■ 435C56

■ 43635B

■ 436961

Harmonies

Analogous

The Analogous color harmony consists of three colors that are next to each other on the color wheel.



3E2E3A



432D32



432E2A

Triad

The Triadic color harmony groups three colors that are evenly spaced from another and form a triangle on the color wheel.



432D32



2F3525



203641

Complementary

The Complementary color scheme is a pair of colors which are on the opposite of each other on the color wheel.



432D32



2D433E

Split Complementary

Split-complementary colors differ from the complementary color scheme. The scheme consists of three colors, the original color and two neighbors of the complement color.



1B373C



432D32



25372C

Square

The Square scheme is like the rectangle color scheme, but the four colors are evenly spaced on the color wheel.



432D32



383323



1E3834



2B3343

Rectangle

The Rectangle color scheme consists of four colors that form a rectangle on the color wheel.



432D32



412F26



1E3834



1D3640

Sweetspot

The Sweet Spot groups the original color and five complimentary colors.



432D32



574E50



3E2D43



2B2627



ABABAB



2B2B2B

Same Dimension

The Same Dimension uses a secret algorithm to generate beautiful new colors.



432D32



57353D



43332D



211E1F



610016



E00033

Inverse Universe

The Inverse Universe completely reimagines the original color for something new.



432D32



57353D



2D3D43



211E1F



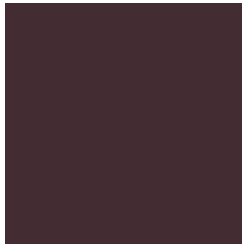
610016



E00033

Previews

White Background



This preview shows how the Hex color 432D32 looks on a white background.

Color Contrast Check

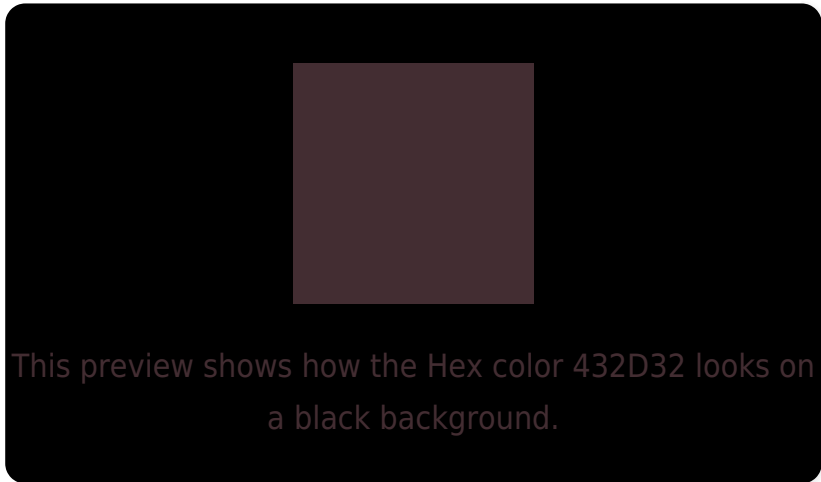
Large Text (above 18pt) WCAG AA ✓ Pass

Any Text WCAG AA ✓ Pass

Large Text (above 18pt) WCAG AAA ✓ Pass

Any Text WCAG AAA ✓ Pass

Black Background



Color Contrast Check

Large Text (above 18pt) WCAG AA × Fail

Any Text WCAG AA × Fail

Large Text (above 18pt) WCAG AAA × Fail

Any Text WCAG AAA × Fail

If you want to check with other color combinations, try the [Color Contrast Checker](#).

Hex 432D32 Background



This preview shows how black text looks on a background with the Hex color 432D32.

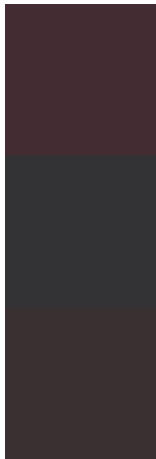


This preview shows how white text looks on a background with the Hex color 432D32.

Color Blindness Simulation

Color vision deficiency is a very complex topic, and I could not describe the different causes any better than Wikipedia does, so if you want to learn more, you should check out their [article about color blindness](#).

Dichromacy



Original Color
432D32

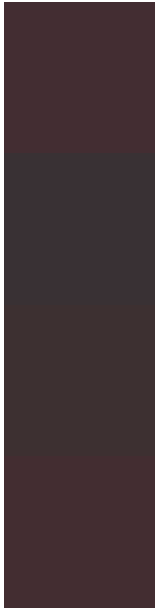
Protanopia
333335

Deuteranopia
393131



Tritanopia
432D31

Trichromacy



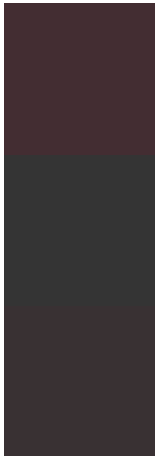
Original Color
432D32

Protanomaly
393134

Deuteranomaly
3D3031

Tritanomaly
432D31

Monochromacy



Original Color
432D32

Achromatopsia
343434

Achromatomaly
393133

CSS Examples

Text

The CSS property to change the color of the text to Hex 432D32 is called "color". The color property can be set on classes, ids or directly on the HTML element.

This example shows how text in the color #432D32 looks like.

```
.text, #text, p{  
    color:#432D32  
}
```

If you want to add a text shadow in that color use the text-shadow property, you can generate a text shadow directly with our [CSS Text Shadow Generator](#).

Here you see how black text with a 4 pixel #432D32 colored shadow looks like.

```
.shadow{ text-shadow: 4px 4px 2px #432D32
}
```

Border

The CSS property to change the border of an element to Hex 432D32 is called "border". The border property can be set on classes, ids or directly on the HTML element.

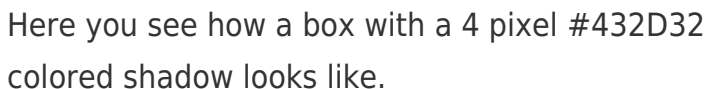
This example shows the color as border, it can be applied via the CSS property "border" or "border-color".

```
.border, #border, table{ border:4px solid
#432D32 }
```

If only the border color should be changed use the property `border-color`.

```
.border{ border-color:#432D32 }
```

If you want to add a box shadow in that color use:



Here you see how a box with a 4 pixel #432D32 colored shadow looks like.

```
.boxshadow{ -moz-box-shadow:4px 4px 4px  
4px #432D32; -webkit-box-shadow:4px 4px  
4px 4px #432D32; box-shadow:4px 4px 4px  
4px #432D32 }
```

Background

The CSS property to change the background color of an element to Hex 432D32 is called "background". The background property can be set on classes, ids or directly on the HTML element.

```
.background, #background, body{  
background:#432D32 }
```

If only the background color should be changed can be used:

```
.background{ background-color:#432D32 }
```

This example shows the color as background, it is applied via the CSS property "background".

To optimize and compress your CSS code, you can use our [online CSS compressor and optimizer](#) based on csstidy. If you want to create a linear or radial gradient as background or border, check our [CSS Gradient Generator](#).

Hey! You found this booklet interesting? Support Converting Colors with the new Membership Option!

The pro membership hides all ads, plus gives you double the colors in the color bucket, and more awesome pro features!

[Learn more, Memberships starting at \\$2.50/m!](#)

**Follow me
on Twitter!**

@ConvertingColor