

Converting Colors

Hex(432F30)

Have a look what the booklet for
Hex(432F30) contains.

Hex(432F30)	3
<i>Conversions</i>	4
<i>Details</i>	6
<i>Harmonies</i>	11
<i>Previews</i>	23
<i>Color Blindness Simulation</i>	26
<i>CSS Examples</i>	29

Color

Hex(432F30)

Conversions

Conversions Part 1

Format	Color
Hex	432F30
RGB	67, 47, 48
RGB Percent	26%, 18%, 19%
CMY	0.7373, 0.8157, 0.8118
CMYK	0.00, 0.30, 0.28, 0.74
HSL	357°, 18%, 22%
HSV	357°, 30%, 26%
XYZ	3.8648, 3.4397, 3.2565
YIQ	53.0940, 11.5990, 4.5510

Conversions

Conversions Part 2

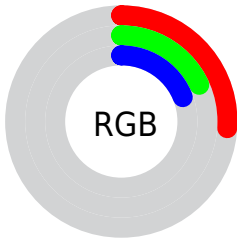
Format	Color
R_{YB}	67, 47, 48
Decimal	4402992
CIE Lab	21.73, 9.33, 2.96
CIE LCh	22, 9.785, 17.620
Yxy	3.4397, 0.3659, 0.3257
Android (android.graphics.Color)	4282593072 (0xFF432F30)
YUV	53.0940, -2.5113, 12.1956
Hunter-Lab	18.5465, 4.7398, 2.5719

Details

The Hex color **432F30** is a dark color, and the websafe version is hex **333333**. A complement of this color would be **2F4342**, and the grayscale version is **353535**.

A 20% lighter version of the original color is **745D5E**, and **1A0000** is the 20% darker color. If you saturate the color by 10%, you get **43282A**, and if you desaturate by 10%, it is **433636**.

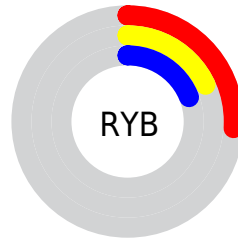
Distribution



Red (26%)

Green (18%)

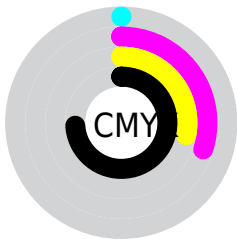
Blue (19%)



Red (26%)

Yellow (18%)

Blue (19%)

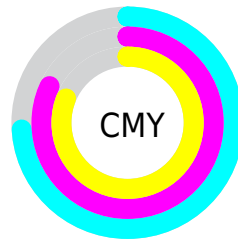


Cyan (0%)

Magenta (30%)

Yellow (28%)

Black (74%)



Cyan (74%)

Magenta (82%)

Yellow (81%)

Brightness & Saturation Gradients

These gradients show how the Hex color 432F30 changes by changing the brightness by 10 percent. The first figure shows a shift by +10% for each color and the second figure -10%.

Similar to the brightness gradients but the following saturation gradients show a change of the Hex color 432F30 by changing the saturation by 10% instead.



432F30



432F30

FFFFFF



2C1A1B



745D5E



1A0000



8D7677



000000



A88F90



C3AAAB



DFC5C6



FCE1E2



FFFEFF



432F30



432F30

■ 43282A

■ 433636

■ 432223

■ 433C3D

■ 431B1D

■ 434343

■ 431417

■ 434A49

■ 430E10

■ 435150

■ 43070A

■ 435756

■ 430003

■ 435E5D

■ 436563

■ 436B69

Harmonies

Analogous

The Analogous color harmony consists of three colors that are next to each other on the color wheel.



412F37



432F30



41302A

Triad

The Triadic color harmony groups three colors that are evenly spaced from another and form a triangle on the color wheel.



432F30



2D372A



283642

Complementary

The Complementary color scheme is a pair of colors which are on the opposite of each other on the color wheel.



432F30



2F4342

Split Complementary

Split-complementary colors differ from the complementary color scheme. The scheme consists of three colors, the original color and two neighbors of the complement color.



21373E



432F30



253831

Square

The Square scheme is like the rectangle color scheme, but the four colors are evenly spaced on the color wheel.



432F30



353526



203838



313342

Rectangle

The Rectangle color scheme consists of four colors that form a rectangle on the color wheel.



432F30



3E3227



203838



253641

Sweetspot

The Sweet Spot groups the original color and five complimentary colors.



432F30



574F4F



422F43



2B2727



ABABAB



2B2B2B

Same Dimension

The Same Dimension uses a secret algorithm to generate beautiful new colors.



432F30



573739



43382F



211E1E



610005



E0000B

Inverse Universe

The Inverse Universe completely reimagines the original color for something new.



432F30



573739



2F3A43



211E1E



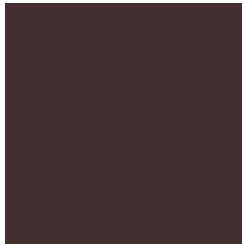
610005



E0000B

Previews

White Background



This preview shows how the Hex color 432F30 looks on a white background.

Color Contrast Check

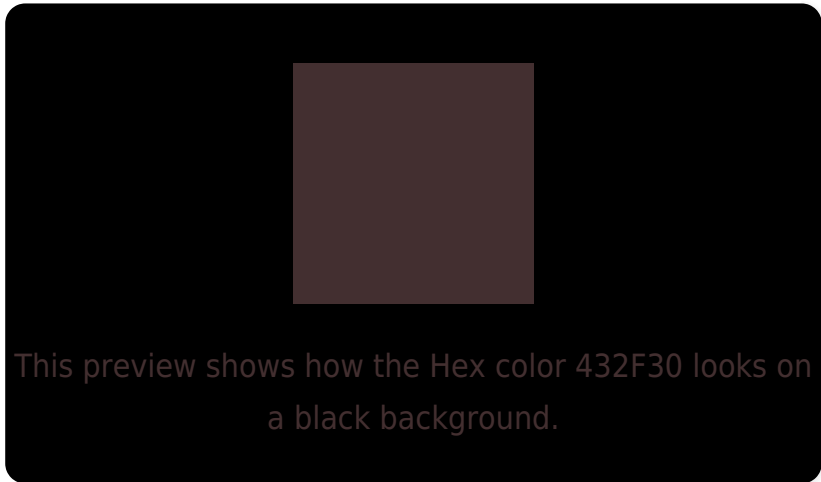
Large Text (above 18pt) WCAG AA ✓ Pass

Any Text WCAG AA ✓ Pass

Large Text (above 18pt) WCAG AAA ✓ Pass

Any Text WCAG AAA ✓ Pass

Black Background



Color Contrast Check

Large Text (above 18pt) WCAG AA × Fail

Any Text WCAG AA × Fail

Large Text (above 18pt) WCAG AAA × Fail

Any Text WCAG AAA × Fail

If you want to check with other color combinations, try the [Color Contrast Checker](#).

Hex 432F30 Background



This preview shows how black text looks on a background with the Hex color 432F30.

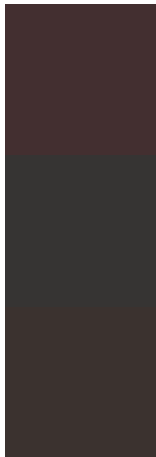


This preview shows how white text looks on a background with the Hex color 432F30.

Color Blindness Simulation

Color vision deficiency is a very complex topic, and I could not describe the different causes any better than Wikipedia does, so if you want to learn more, you should check out their [article about color blindness](#).

Dichromacy



Original Color
432F30

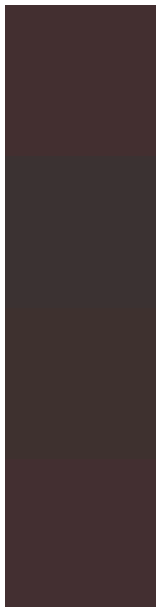
Protanopia
363433

Deuteranopia
3B322F



Tritanopia
432F32

Trichromacy



Original Color

432F30

Protanomaly

3B3232

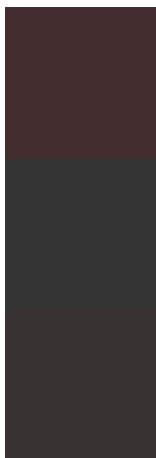
Deuteranomaly

3E312F

Tritanomaly

432F31

Monochromacy



Original Color

432F30

Achromatopsia

353535

Achromatomaly

3A3333

CSS Examples

Text

The CSS property to change the color of the text to Hex 432F30 is called "color". The color property can be set on classes, ids or directly on the HTML element.

This example shows how text in the color #432F30 looks like.

```
.text, #text, p{  
    color:#432F30  
}
```

If you want to add a text shadow in that color use the text-shadow property, you can generate a text shadow directly with our [CSS Text Shadow Generator](#).

Here you see how black text with a 4 pixel #432F30 colored shadow looks like.

```
.shadow{ text-shadow: 4px 4px 2px #432F30
}
```

Border

The CSS property to change the border of an element to Hex 432F30 is called "border". The border property can be set on classes, ids or directly on the HTML element.

This example shows the color as border, it can be applied via the CSS property "border" or "border-color".

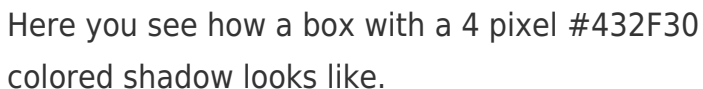
```
.border, #border, table{ border:4px solid
#432F30 }
```

If only the border color should be changed use the property `border-color`.

```
.border{ border-color:#432F30 }
```

If you want to add a box shadow in that color use:

Here you see how a box with a 4 pixel #432F30 colored shadow looks like.



```
.boxshadow{ -moz-box-shadow:4px 4px 4px  
4px #432F30; -webkit-box-shadow:4px 4px  
4px 4px #432F30; box-shadow:4px 4px 4px  
4px #432F30 }
```

Background

The CSS property to change the background color of an element to Hex 432F30 is called "background". The background property can be set on classes, ids or directly on the HTML element.

```
.background, #background, body{  
background:#432F30 }
```

If only the background color should be changed can be used:

```
.background{ background-color:#432F30 }
```

This example shows the color as background, it is applied via the CSS property "background".

To optimize and compress your CSS code, you can use our [online CSS compressor and optimizer](#) based on csstidy. If you want to create a linear or radial gradient as background or border, check our [CSS Gradient Generator](#).

Hey! You found this booklet interesting? Support Converting Colors with the new Membership Option!

The pro membership hides all ads, plus gives you double the colors in the color bucket, and more awesome pro features!

[Learn more, Memberships starting at \\$2.50/m!](#)

**Follow me
on Twitter!**

@ConvertingColor