

Converting Colors

Hex(43352C)

Have a look what the booklet for
Hex(43352C) contains.

Hex(43352C)	3
<i>Conversions</i>	4
<i>Details</i>	6
<i>Harmonies</i>	11
<i>Previews</i>	23
<i>Color Blindness Simulation</i>	26
<i>CSS Examples</i>	29

Color

Hex(43352C)

Conversions

Conversions Part 1

Format	Color
Hex	43352C
RGB	67, 53, 44
RGB Percent	26%, 21%, 17%
CMY	0.7373, 0.7922, 0.8275
CMYK	0.00, 0.21, 0.34, 0.74
HSL	23°, 21%, 22%
HSV	23°, 34%, 26%
XYZ	4.0425, 3.9213, 2.9267
YIQ	56.1600, 11.2330, 0.1690

Conversions

Conversions Part 2

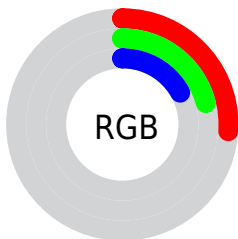
Format	Color
RYB	67, 59, 44
Decimal	4404524
CIELab	23.41, 4.66, 8.04
CIELCh	23, 9.291, 59.886
Yxy	3.9213, 0.3712, 0.3601
Android (android.graphics.Color)	4282594604 (0xFF43352C)
YUV	56.1600, -5.9949, 9.5067
Hunter-Lab	19.8024, 1.7848, 5.0989

Details

The Hex color **43352C** is a dark color, and the websafe version is hex **333333**. A complement of this color would be **2C3A43**, and the grayscale version is **383838**.

A 20% lighter version of the original color is **74645A**, and **190800** is the 20% darker color. If you saturate the color by 10%, you get **433125**, and if you desaturate by 10%, it is **433933**.

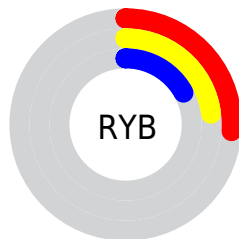
Distribution



Red (26%)

Green (21%)

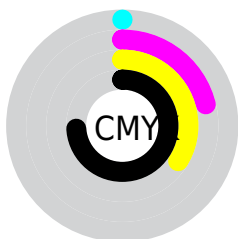
Blue (17%)



Red (26%)

Yellow (23%)

Blue (17%)

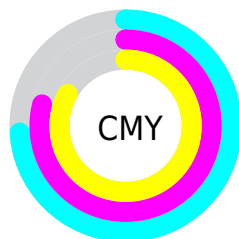


Cyan (0%)

Magenta (21%)

Yellow (34%)

Black (74%)



Cyan (74%)

Magenta (79%)

Yellow (83%)

Brightness & Saturation Gradients

These gradients show how the Hex color 43352C changes by changing the brightness by 10 percent. The first figure shows a shift by +10% for each color and the second figure -10%.

Similar to the brightness gradients but the following saturation gradients show a change of the Hex color 43352C by changing the saturation by 10% instead.

■ 43352C

■ 43352C

FFFFFF

■ 2C2017

■ 74645A

■ 190800

■ 8D7C72

■ 000000

■ A8968B

■ C3B1A6

■ DFCCC1

■ FCE9DD

■ FFFFF9

■ 43352C

■ 43352C

■ 433125

■ 433933

■ 432D1F

■ 433D39

■ 432918

■ 434140

■ 432511

■ 434547

■ 43210B

■ 43494E

■ 431D04

■ 434D54

■ 431A00

■ 43525B

■ 435662

■ 435A68

Harmonies

Analogous

The Analogous color harmony consists of three colors that are next to each other on the color wheel.



463331



43352C



3D372A

Triad

The Triadic color harmony groups three colors that are evenly spaced from another and form a triangle on the color wheel.



43352C



273C37



393644

Complementary

The Complementary color scheme is a pair of colors which are on the opposite of each other on the color wheel.



43352C



2C3A43

Split Complementary

Split-complementary colors differ from the complementary color scheme. The scheme consists of three colors, the original color and two neighbors of the complement color.



303845



43352C



253C3E

Square

The Square scheme is like the rectangle color scheme, but the four colors are evenly spaced on the color wheel.



43352C



2E3B31



283A44



41343F

Rectangle

The Rectangle color scheme consists of four colors that form a rectangle on the color wheel.



43352C



38392B



283A44



363745

Sweetspot

The Sweet Spot groups the original color and five complimentary colors.



43352C



57514E



432C3A



2B2826



ABABAB



2B2B2B

Same Dimension

The Same Dimension uses a secret algorithm to generate beautiful new colors.



43352C



574133



43402C



211F1E



612600



E05800

Inverse Universe

The Inverse Universe completely reimagines the original color for something new.



2C3A43



334957



2C2F43



1E2021



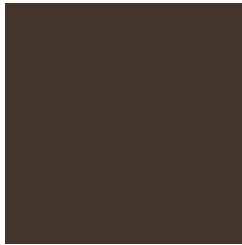
003B61



0089E0

Previews

White Background



This preview shows how the Hex color 43352C looks on a white background.

Color Contrast Check

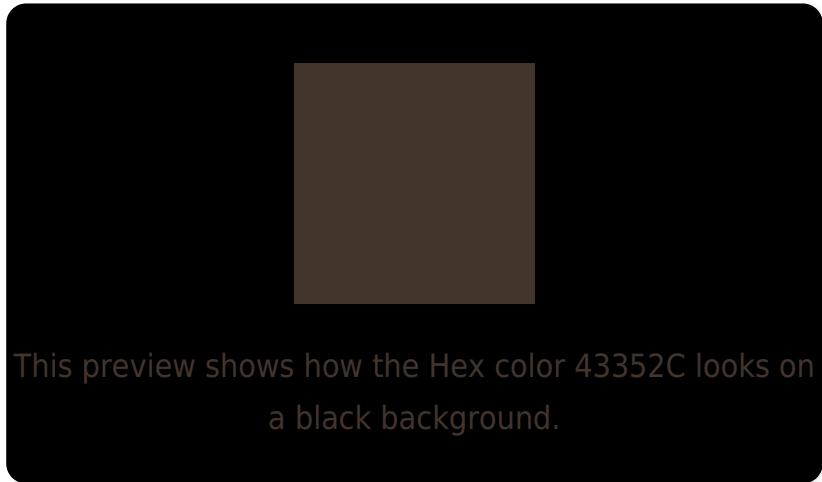
Large Text (above 18pt) WCAG AA ✓ Pass

Any Text WCAG AA ✓ Pass

Large Text (above 18pt) WCAG AAA ✓ Pass

Any Text WCAG AAA ✓ Pass

Black Background



Color Contrast Check

Large Text (above 18pt) WCAG AA × Fail

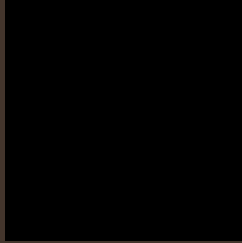
Any Text WCAG AA × Fail

Large Text (above 18pt) WCAG AAA × Fail

Any Text WCAG AAA × Fail

If you want to check with other color combinations, try the [Color Contrast Checker](#).

Hex 43352C Background



This preview shows how black text looks on a background with the Hex color 43352C.

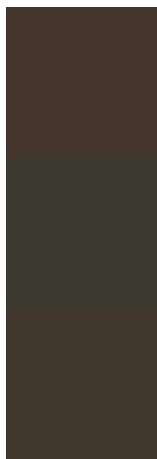


This preview shows how white text looks on a background with the Hex color 43352C.

Color Blindness Simulation

Color vision deficiency is a very complex topic, and I could not describe the different causes any better than Wikipedia does, so if you want to learn more, you should check out their [article about color blindness](#).

Dichromacy



Original Color
43352C

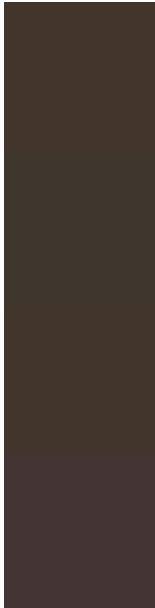
Protanopia
3B382D

Deuteranopia
41362C



Tritanopia
443337

Trichromacy



Original Color
43352C

Protanomaly
3E372D

Deuteranomaly
42362C

Tritanomaly
443433

Monochromacy



Original Color
43352C

Achromatopsia
383838

Achromatomaly
3C3734

CSS Examples

Text

The CSS property to change the color of the text to Hex 43352C is called "color". The color property can be set on classes, ids or directly on the HTML element.

This example shows how text in the color #43352C looks like.

```
.text, #text, p{  
    color:#43352C  
}
```

If you want to add a text shadow in that color use the text-shadow property, you can generate a text shadow directly with our [CSS Text Shadow Generator](#).

Here you see how black text with a 4 pixel #43352C colored shadow looks like.

```
.shadow{ text-shadow: 4px 4px 2px #43352C
}
```

Border

The CSS property to change the border of an element to Hex 43352C is called "border". The border property can be set on classes, ids or directly on the HTML element.

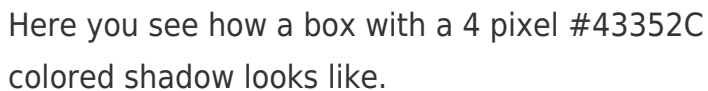
This example shows the color as border, it can be applied via the CSS property "border" or "border-color".

```
.border, #border, table{ border:4px solid
#43352C }
```

If only the border color should be changed use the property `border-color`.

```
.border{ border-color:#43352C }
```

If you want to add a box shadow in that color use:



Here you see how a box with a 4 pixel #43352C colored shadow looks like.

```
.boxshadow{ -moz-box-shadow:4px 4px 4px  
4px #43352C; -webkit-box-shadow:4px 4px  
4px 4px #43352C; box-shadow:4px 4px 4px  
4px #43352C }
```

Background

The CSS property to change the background color of an element to Hex 43352C is called "background". The background property can be set on classes, ids or directly on the HTML element.

```
.background, #background, body{  
background:#43352C }
```

If only the background color should be changed can be used:

```
.background{ background-color:#43352C }
```

This example shows the color as background, it is applied via the CSS property "background".

To optimize and compress your CSS code, you can use our [online CSS compressor and optimizer](#) based on csstidy. If you want to create a linear or radial gradient as background or border, check our [CSS Gradient Generator](#).

Hey! You found this booklet interesting? Support Converting Colors with the new Membership Option!

The pro membership hides all ads, plus gives you double the colors in the color bucket, and more awesome pro features!

[Learn more, Memberships starting at \\$2.50/m!](#)

**Follow me
on Twitter!**

@ConvertingColor