

# Converting Colors

Hex(442D2E)

Have a look what the booklet for  
Hex(442D2E) contains.

<b>Hex(442D2E)</b> .....	3
<b><i>Conversions</i></b> .....	4
<b><i>Details</i></b> .....	6
<b><i>Harmonies</i></b> .....	11
<b><i>Previews</i></b> .....	23
<b><i>Color Blindness Simulation</i></b> .....	26
<b><i>CSS Examples</i></b> .....	29

# Color

**Hex(442D2E)**

# Conversions

## Conversions Part 1

Format	Color
Hex	442D2E
RGB	68, 45, 46
RGB Percent	27%, 18%, 18%
CMY	0.7333, 0.8235, 0.8196
CMYK	0.00, 0.34, 0.32, 0.73
HSL	357°, 20%, 22%
HSV	357°, 34%, 27%
XYZ	3.8154, 3.3030, 3.0212
YIQ	51.9910, 13.3870, 5.1870

# Conversions

## Conversions Part 2

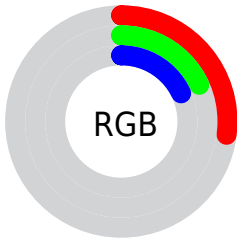
<b>Format</b>	<b>Color</b>
<b>R<sub>YB</sub></b>	68, 45, 46
Decimal	4468014
CIE <sub>Lab</sub>	21.22, 10.78, 3.62
CIE <sub>LCh</sub>	21, 11.368, 18.576
Yxy	3.3030, 0.3763, 0.3257
Android (android.graphics.Color)	4282658094 (0xFF442D2E)
YUV	51.9910, -2.9536, 14.0399
Hunter-Lab	18.1741, 5.6692, 2.8656

# Details

The Hex color **442D2E** is a dark color, and the websafe version is hex **333333**. A complement of this color would be **2D4443**, and the grayscale version is **343434**.

A 20% lighter version of the original color is **755B5C**, and **1A0000** is the 20% darker color. If you saturate the color by 10%, you get **442627**, and if you desaturate by 10%, it is **443435**.

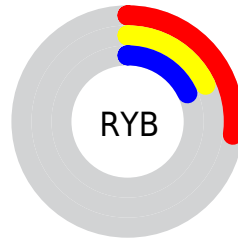
# Distribution



Red (27%)

Green (18%)

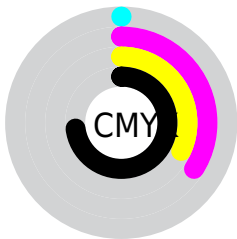
Blue (18%)



Red (27%)

Yellow (18%)

Blue (18%)

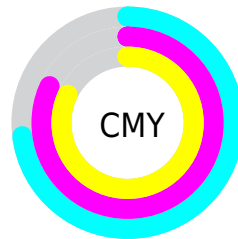


Cyan (0%)

Magenta (34%)

Yellow (32%)

Black (73%)



Cyan (73%)

Magenta (82%)

Yellow (82%)

# Brightness & Saturation Gradients

These gradients show how the Hex color 442D2E changes by changing the brightness by 10 percent. The first figure shows a shift by +10% for each color and the second figure -10%.

Similar to the brightness gradients but the following saturation gradients show a change of the Hex color 442D2E by changing the saturation by 10% instead.





442D2E



442D2E

FFFFFF



2D1819



755B5C



1A0000



8F7474



000000



A98D8E



C5A8A8



E1C3C3



FEDFDF



FFFBFC



442D2E



442D2E

■ 442627

■ 443435

■ 441F21

■ 443B3B

■ 44191A

■ 444142

■ 441214

■ 444848

■ 440B0D

■ 444F4F

■ 440407

■ 445655

■ 440003

■ 445D5C

■ 446362

■ 446A69

# Harmonies

## Analogous

The Analogous color harmony consists of three colors that are next to each other on the color wheel.



422D37



442D2E



422F27

# Triad

The Triadic color harmony groups three colors that are evenly spaced from another and form a triangle on the color wheel.



442D2E



2A3628



243543

# Complementary

The Complementary color scheme is a pair of colors which are on the opposite of each other on the color wheel.



442D2E



2D4443

# Split Complementary

Split-complementary colors differ from the complementary color scheme. The scheme consists of three colors, the original color and two neighbors of the complement color.



1B373F



442D2E



21372F

# Square

The Square scheme is like the rectangle color scheme, but the four colors are evenly spaced on the color wheel.



442D2E



343423



1B3838



303243

# Rectangle

The Rectangle color scheme consists of four colors that form a rectangle on the color wheel.



442D2E



3E3024



1B3838



213542



# Sweetspot

The Sweet Spot groups the original color and five complimentary colors.



442D2E



595051



432D44



2E2829



ADADAD



2E2E2E



# Same Dimension

The Same Dimension uses a secret algorithm to generate beautiful new colors.



442D2E



593536



44372D



211E1E



610004



E0000A



# Inverse Universe

The Inverse Universe completely reimagines the original color for something new.



442D2E



593536



2D3A44



211E1E



610004

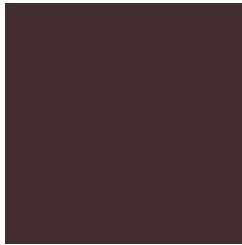


E0000A



# Previews

## White Background



This preview shows how the Hex color 442D2E looks on a white background.

## Color Contrast Check

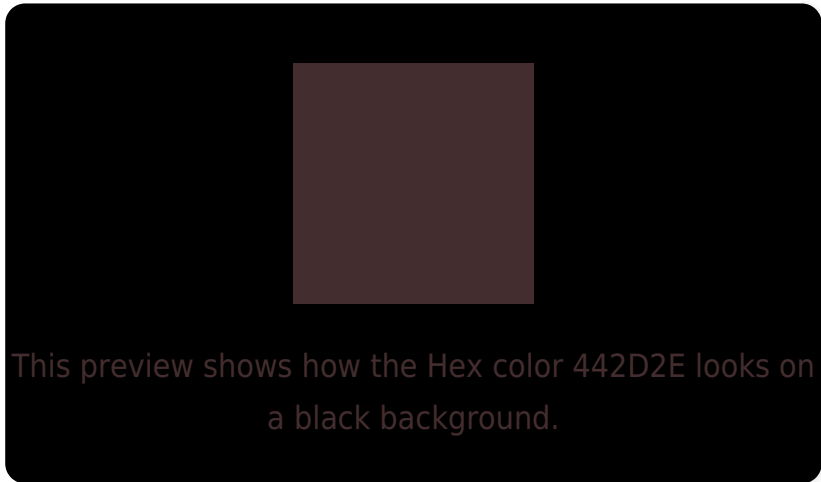
Large Text (above 18pt) WCAG AA ✓ Pass

Any Text WCAG AA ✓ Pass

Large Text (above 18pt) WCAG AAA ✓ Pass

Any Text WCAG AAA ✓ Pass

# Black Background



## Color Contrast Check

Large Text (above 18pt) WCAG AA × Fail

Any Text WCAG AA × Fail

Large Text (above 18pt) WCAG AAA × Fail

Any Text WCAG AAA × Fail

If you want to check with other color combinations, try the [Color Contrast Checker](#).



## Hex 442D2E Background



This preview shows how black text looks on a background with the Hex color 442D2E.

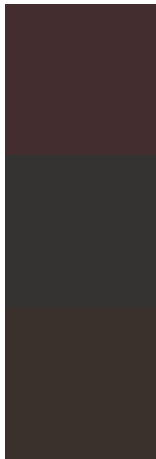


This preview shows how white text looks on a background with the Hex color 442D2E.

# Color Blindness Simulation

Color vision deficiency is a very complex topic, and I could not describe the different causes any better than Wikipedia does, so if you want to learn more, you should check out their [article about color blindness](#).

## Dichromacy



**Original Color**  
442D2E

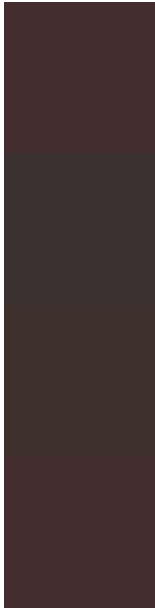
**Protanopia**  
353331

**Deuteranopia**  
3A312D



**Tritanopia**  
442D30

# Trichromacy



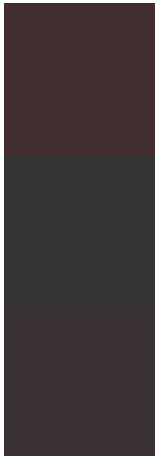
**Original Color**  
442D2E

**Protanomaly**  
3A3130

**Deuteranomaly**  
3E302D

**Tritanomaly**  
442D2F

# Monochromacy



**Original Color**  
442D2E

**Achromatopsia**  
343434

**Achromatomaly**  
3A3132

# CSS Examples

## Text

The CSS property to change the color of the text to Hex 442D2E is called "color". The color property can be set on classes, ids or directly on the HTML element.

This example shows how text in the color #442D2E looks like.

```
.text, #text, p{  
  color:#442D2E  
}
```

If you want to add a text shadow in that color use the text-shadow property, you can generate a text shadow directly with our [CSS Text Shadow Generator](#).

Here you see how black text with a 4 pixel #442D2E colored shadow looks like.

```
.shadow{ text-shadow: 4px 4px 2px #442D2E
}
```

## Border

The CSS property to change the border of an element to Hex 442D2E is called "border". The border property can be set on classes, ids or directly on the HTML element.

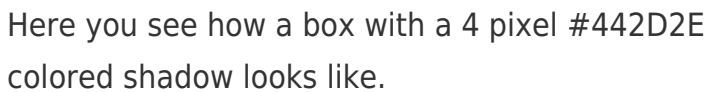
This example shows the color as border, it can be applied via the CSS property "border" or "border-color".

```
.border, #border, table{ border:4px solid
#442D2E }
```

If only the border color should be changed use the property `border-color`.

```
.border{ border-color:#442D2E }
```

If you want to add a box shadow in that color use:

A rectangular box with a dark blue shadow. The box is white with a thin black border. The shadow is a dark blue color, matching the #442D2E hex code mentioned in the text. The shadow is applied to the bottom and right sides of the box, creating a 3D effect.

Here you see how a box with a 4 pixel #442D2E colored shadow looks like.

```
.boxshadow{ -moz-box-shadow:4px 4px 4px  
4px #442D2E; -webkit-box-shadow:4px 4px  
4px 4px #442D2E; box-shadow:4px 4px 4px  
4px #442D2E }
```

# Background

The CSS property to change the background color of an element to Hex 442D2E is called "background". The background property can be set on classes, ids or directly on the HTML element.

```
.background, #background, body{  
background:#442D2E }
```

If only the background color should be changed can be used:

```
.background{ background-color:#442D2E }
```

This example shows the color as background, it is applied via the CSS property "background".

To optimize and compress your CSS code, you can use our [online CSS compressor and optimizer](#) based on csstidy. If you want to create a linear or radial gradient as background or border, check our [CSS Gradient Generator](#).



Hey! You found this booklet interesting? Support Converting Colors with the new Membership Option!

The pro membership hides all ads, plus gives you double the colors in the color bucket, and more awesome pro features!

**[Learn more, Memberships starting at \\$2.50/m!](#)**

**Follow me  
on Twitter!**

@ConvertingColor