

Converting Colors

Hex(442D30)

Have a look what the booklet for
Hex(442D30) contains.

Hex(442D30)	3
<i>Conversions</i>	4
<i>Details</i>	6
<i>Harmonies</i>	11
<i>Previews</i>	23
<i>Color Blindness Simulation</i>	26
<i>CSS Examples</i>	29

Color

Hex(442D30)

Conversions

Conversions Part 1

Format	Color
Hex	442D30
RGB	68, 45, 48
RGB Percent	27%, 18%, 19%
CMY	0.7333, 0.8235, 0.8118
CMYK	0.00, 0.34, 0.29, 0.73
HSL	352°, 20%, 22%
HSV	352°, 34%, 27%
XYZ	3.8558, 3.3191, 3.2337
YIQ	52.2190, 12.7450, 5.8090

Conversions

Conversions Part 2

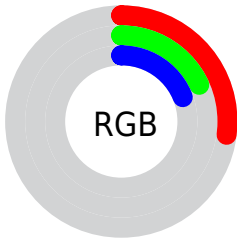
Format	Color
R_{YB}	68, 45, 48
Decimal	4468016
CIE _{Lab}	21.28, 11.12, 2.34
CIE _{LCh}	21, 11.359, 11.878
Yxy	3.3191, 0.3704, 0.3189
Android (android.graphics.Color)	4282658096 (0xFF442D30)
YUV	52.2190, -2.0800, 13.8399
Hunter-Lab	18.2184, 5.8958, 2.2291

Details

The Hex color **442D30** is a dark color, and the websafe version is hex **333333**. A complement of this color would be **2D4441**, and the grayscale version is **343434**.

A 20% lighter version of the original color is **755B5E**, and **1B0000** is the 20% darker color. If you saturate the color by 10%, you get **44262A**, and if you desaturate by 10%, it is **443436**.

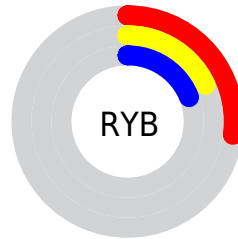
Distribution



Red (27%)

Green (18%)

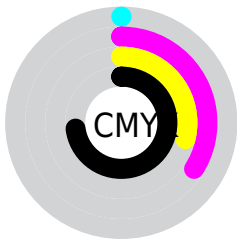
Blue (19%)



Red (27%)

Yellow (18%)

Blue (19%)

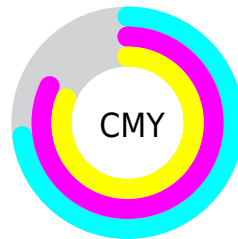


Cyan (0%)

Magenta (34%)

Yellow (29%)

Black (73%)



Cyan (73%)

Magenta (82%)

Yellow (81%)

Brightness & Saturation Gradients

These gradients show how the Hex color 442D30 changes by changing the brightness by 10 percent. The first figure shows a shift by +10% for each color and the second figure -10%.

Similar to the brightness gradients but the following saturation gradients show a change of the Hex color 442D30 by changing the saturation by 10% instead.

■ 442D30

■ 442D30

FFFFFF

■ 2D181B

■ 755B5E

■ 1B0000

■ 8F7477

■ 000000

■ A98D90

■ C5A8AB

■ E1C3C6

■ FEDFE2

■ FFFBFF

■ 442D30

■ 442D30

■ 44262A

■ 443436

■ 441F24

■ 443B3C

■ 44191E

■ 444142

■ 441218

■ 444848

■ 440B12

■ 444F4E

■ 44040D

■ 445653

■ 440009

■ 445D59

■ 44635F

■ 446A65

Harmonies

Analogous

The Analogous color harmony consists of three colors that are next to each other on the color wheel.



412E38



442D30



432E28

Triad

The Triadic color harmony groups three colors that are evenly spaced from another and form a triangle on the color wheel.



442D30



2C3626



223543

Complementary

The Complementary color scheme is a pair of colors which are on the opposite of each other on the color wheel.



442D30



2D4441

Split Complementary

Split-complementary colors differ from the complementary color scheme. The scheme consists of three colors, the original color and two neighbors of the complement color.



1B373E



442D30



23372E

Square

The Square scheme is like the rectangle color scheme, but the four colors are evenly spaced on the color wheel.



442D30



363423



1C3836



2D3343

Rectangle

The Rectangle color scheme consists of four colors that form a rectangle on the color wheel.



442D30



403025



1C3836



1F3642

Sweetspot

The Sweet Spot groups the original color and five complimentary colors.



442D30



595051



412D44



2E2829



ADADAD



2E2E2E

Same Dimension

The Same Dimension uses a secret algorithm to generate beautiful new colors.



442D30



593539



44352D



211E1E



61000D



E0001D

Inverse Universe

The Inverse Universe completely reimagines the original color for something new.



442D30



593539



2D3C44



211E1E



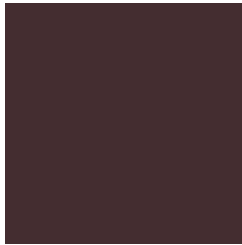
61000D



E0001D

Previews

White Background



This preview shows how the Hex color 442D30 looks on a white background.

Color Contrast Check

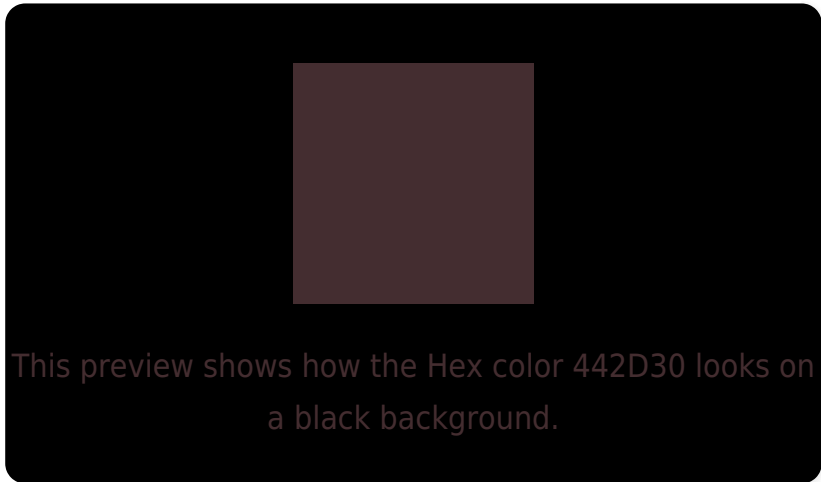
Large Text (above 18pt) WCAG AA ✓ Pass

Any Text WCAG AA ✓ Pass

Large Text (above 18pt) WCAG AAA ✓ Pass

Any Text WCAG AAA ✓ Pass

Black Background



Color Contrast Check

Large Text (above 18pt) WCAG AA × Fail

Any Text WCAG AA × Fail

Large Text (above 18pt) WCAG AAA × Fail

Any Text WCAG AAA × Fail

If you want to check with other color combinations, try the [Color Contrast Checker](#).

Hex 442D30 Background



This preview shows how black text looks on a background with the Hex color 442D30.

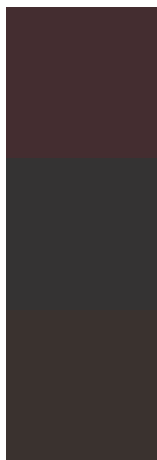


This preview shows how white text looks on a background with the Hex color 442D30.

Color Blindness Simulation

Color vision deficiency is a very complex topic, and I could not describe the different causes any better than Wikipedia does, so if you want to learn more, you should check out their [article about color blindness](#).

Dichromacy



Original Color

442D30

Protanopia

343333

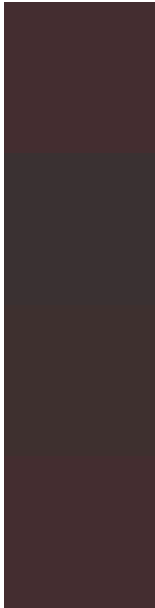
Deuteranopia

3A322F



Tritanopia
442D30

Trichromacy



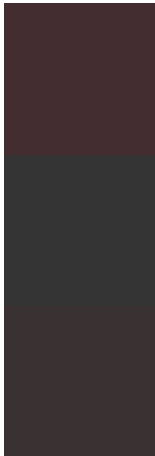
Original Color
442D30

Protanomaly
3A3132

Deuteranomaly
3E302F

Tritanomaly
442D30

Monochromacy



Original Color
442D30

Achromatopsia
343434

Achromatomaly
3A3133

CSS Examples

Text

The CSS property to change the color of the text to Hex 442D30 is called "color". The color property can be set on classes, ids or directly on the HTML element.

This example shows how text in the color #442D30 looks like.

```
.text, #text, p{  
    color:#442D30  
}
```

If you want to add a text shadow in that color use the text-shadow property, you can generate a text shadow directly with our [CSS Text Shadow Generator](#).

Here you see how black text with a 4 pixel #442D30 colored shadow looks like.

```
.shadow{ text-shadow: 4px 4px 2px #442D30
}
```

Border

The CSS property to change the border of an element to Hex 442D30 is called "border". The border property can be set on classes, ids or directly on the HTML element.

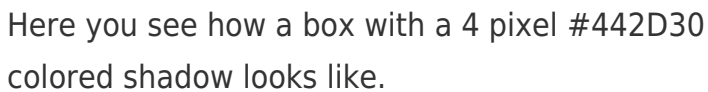
This example shows the color as border, it can be applied via the CSS property "border" or "border-color".

```
.border, #border, table{ border:4px solid
#442D30 }
```

If only the border color should be changed use the property `border-color`.

```
.border{ border-color:#442D30 }
```

If you want to add a box shadow in that color use:



Here you see how a box with a 4 pixel #442D30 colored shadow looks like.

```
.boxshadow{ -moz-box-shadow:4px 4px 4px  
4px #442D30; -webkit-box-shadow:4px 4px  
4px 4px #442D30; box-shadow:4px 4px 4px  
4px #442D30 }
```

Background

The CSS property to change the background color of an element to Hex 442D30 is called "background". The background property can be set on classes, ids or directly on the HTML element.

```
.background, #background, body{  
background:#442D30 }
```

If only the background color should be changed can be used:

```
.background{ background-color:#442D30 }
```

This example shows the color as background, it is applied via the CSS property "background".

To optimize and compress your CSS code, you can use our [online CSS compressor and optimizer](#) based on csstidy. If you want to create a linear or radial gradient as background or border, check our [CSS Gradient Generator](#).

Hey! You found this booklet interesting? Support Converting Colors with the new Membership Option!

The pro membership hides all ads, plus gives you double the colors in the color bucket, and more awesome pro features!

[Learn more, Memberships starting at \\$2.50/m!](#)

**Follow me
on Twitter!**

@ConvertingColor