

# Converting Colors

Hex(45372C)

Have a look what the booklet for  
Hex(45372C) contains.

<b>Hex(45372C)</b> .....	3
<i><b>Conversions</b></i> .....	4
<i><b>Details</b></i> .....	6
<i><b>Harmonies</b></i> .....	11
<i><b>Previews</b></i> .....	23
<i><b>Color Blindness Simulation</b></i> .....	26
<i><b>CSS Examples</b></i> .....	29

# Color

Hex(45372C)

# Conversions

## Conversions Part 1

Format	Color
Hex	45372C
RGB	69, 55, 44
RGB Percent	27%, 22%, 17%
CMY	0.7294, 0.7843, 0.8275
CMYK	0.00, 0.20, 0.36, 0.73
HSL	26°, 22%, 22%
HSV	26°, 36%, 27%
XYZ	4.2751, 4.1794, 2.9643
YIQ	57.9320, 11.8750, -0.4530

# Conversions

## Conversions Part 2

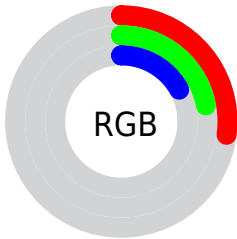
<b>Format</b>	<b>Color</b>
<a href="#">RYB</a>	<a href="#">69, 64, 44</a>
Decimal	<a href="#">4536108</a>
CIELab	<a href="#">24.26, 4.30, 9.24</a>
CIELCh	<a href="#">24, 10.192, 65.053</a>
Yxy	<a href="#">4.1794, 0.3744, 0.3660</a>
Android (android.graphics.Color)	<a href="#">4282726188 (0xFF45372C)</a>
YUV	<a href="#">57.9320, -6.8685, 9.7066</a>
Hunter-Lab	<a href="#">20.4437, 1.5504, 5.7137</a>

# Details

The Hex color **45372C** is a dark color, and the websafe version is hex **333333**. A complement of this color would be **2C3A45**, and the grayscale version is **3A3A3A**.

A 20% lighter version of the original color is **76665A**, and **1B0B00** is the 20% darker color. If you saturate the color by 10%, you get **453325**, and if you desaturate by 10%, it is **453B33**.

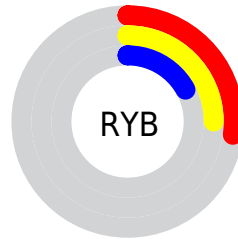
# Distribution



Red (27%)

Green (22%)

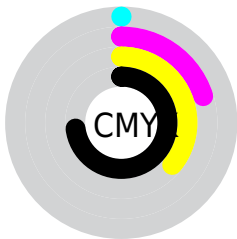
Blue (17%)



Red (27%)

Yellow (25%)

Blue (17%)

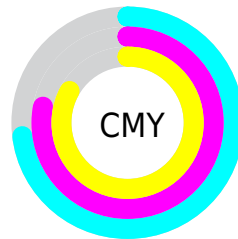


Cyan (0%)

Magenta (20%)

Yellow (36%)

Black (73%)



Cyan (73%)

Magenta (78%)

Yellow (83%)

# Brightness & Saturation Gradients

These gradients show how the Hex color 45372C changes by changing the brightness by 10 percent. The first figure shows a shift by +10% for each color and the second figure -10%.

Similar to the brightness gradients but the following saturation gradients show a change of the Hex color 45372C by changing the saturation by 10% instead.





45372C



45372C

FFFFFF



2E2217



76665A



1B0B00



907F72



000000



AA998C



C6B3A6



E2CFC1



FFEBDD



FFFFF9



45372C



45372C

■ 453325

■ 453B33

■ 452F1E

■ 453F3A

■ 452B17

■ 454341

■ 452810

■ 454648

■ 45240A

■ 454A4F

■ 452003

■ 454E55

■ 451E00

■ 45525C

■ 455663

■ 455A6A

# Harmonies

## Analogous

The Analogous color harmony consists of three colors that are next to each other on the color wheel.



493531



45372C



3E3A2A

# Triad

The Triadic color harmony groups three colors that are evenly spaced from another and form a triangle on the color wheel.



45372C



263E3B



3D3746

# Complementary

The Complementary color scheme is a pair of colors which are on the opposite of each other on the color wheel.



45372C



2C3A45

# Split Complementary

Split-complementary colors differ from the complementary color scheme. The scheme consists of three colors, the original color and two neighbors of the complement color.



323A49



45372C



243E42

# Square

The Square scheme is like the rectangle color scheme, but the four colors are evenly spaced on the color wheel.



45372C



2D3D33



293C47



453540

# Rectangle

The Rectangle color scheme consists of four colors that form a rectangle on the color wheel.



45372C



393B2C



293C47



393847



# Sweetspot

The Sweet Spot groups the original color and five complimentary colors.



45372C



59544F



452C3A



2E2B28



ADADAD



2E2E2E



# Same Dimension

The Same Dimension uses a secret algorithm to generate beautiful new colors.



45372C



594433



45432C



242220



632C00



E36400



# Inverse Universe

The Inverse Universe completely reimagines the original color for something new.



2C3A45



334859



2C2E45



202224



003863

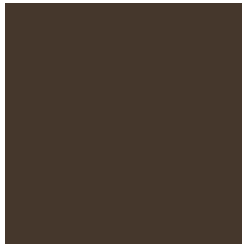


007FE3



# Previews

## White Background



This preview shows how the Hex color 45372C looks on a white background.

## Color Contrast Check

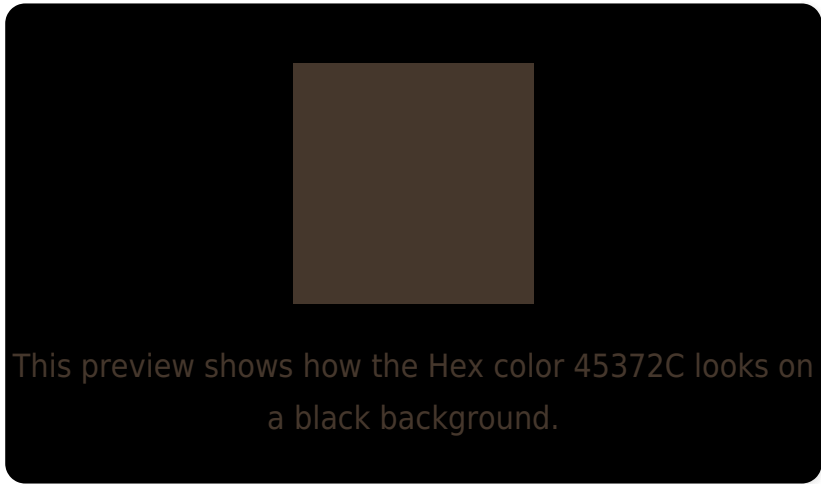
Large Text (above 18pt) WCAG AA ✓ Pass

Any Text WCAG AA ✓ Pass

Large Text (above 18pt) WCAG AAA ✓ Pass

Any Text WCAG AAA ✓ Pass

# Black Background



## Color Contrast Check

Large Text (above 18pt) WCAG AA × Fail

Any Text WCAG AA × Fail

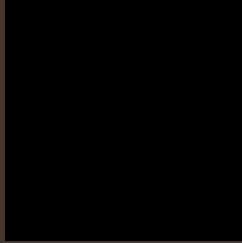
Large Text (above 18pt) WCAG AAA × Fail

Any Text WCAG AAA × Fail

If you want to check with other color combinations, try the [Color Contrast Checker](#).



## Hex 45372C Background



This preview shows how black text looks on a background with the Hex color 45372C.



This preview shows how white text looks on a background with the Hex color 45372C.

# Color Blindness Simulation

Color vision deficiency is a very complex topic, and I could not describe the different causes any better than Wikipedia does, so if you want to learn more, you should check out their [article about color blindness](#).

## Dichromacy



**Original Color**  
45372C

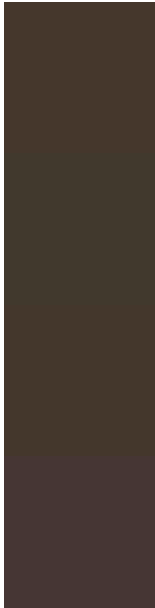
**Protanopia**  
3E3A2D

**Deuteranopia**  
44372C



**Tritanopia**  
463539

# Trichromacy



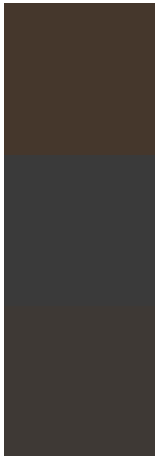
**Original Color**  
45372C

**Protanomaly**  
41392D

**Deuteranomaly**  
44372C

**Tritanomaly**  
463634

# Monochromacy



**Original Color**  
45372C

**Achromatopsia**  
3A3A3A

**Achromatomaly**  
3E3935

# CSS Examples

## Text

The CSS property to change the color of the text to Hex 45372C is called "color". The color property can be set on classes, ids or directly on the HTML element.

This example shows how text in the color #45372C looks like.

```
.text, #text, p{  
  color:#45372C  
}
```

If you want to add a text shadow in that color use the text-shadow property, you can generate a text shadow directly with our [CSS Text Shadow Generator](#).

Here you see how black text with a 4 pixel #45372C colored shadow looks like.

```
.shadow{ text-shadow: 4px 4px 2px #45372C
}
```

## Border

The CSS property to change the border of an element to Hex 45372C is called "border". The border property can be set on classes, ids or directly on the HTML element.

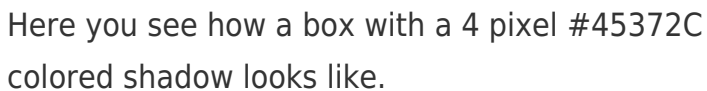
This example shows the color as border, it can be applied via the CSS property "border" or "border-color".

```
.border, #border, table{ border:4px solid
#45372C }
```

If only the border color should be changed use the property `border-color`.

```
.border{ border-color:#45372C }
```

If you want to add a box shadow in that color use:



Here you see how a box with a 4 pixel #45372C colored shadow looks like.

```
.boxshadow{ -moz-box-shadow:4px 4px 4px  
4px #45372C; -webkit-box-shadow:4px 4px  
4px 4px #45372C; box-shadow:4px 4px 4px  
4px #45372C }
```

# Background

The CSS property to change the background color of an element to Hex 45372C is called "background". The background property can be set on classes, ids or directly on the HTML element.

```
.background, #background, body{  
background:#45372C }
```

If only the background color should be changed can be used:

```
.background{ background-color:#45372C }
```

This example shows the color as background, it is applied via the CSS property "background".

To optimize and compress your CSS code, you can use our [online CSS compressor and optimizer](#) based on csstidy. If you want to create a linear or radial gradient as background or border, check our [CSS Gradient Generator](#).



Hey! You found this booklet interesting? Support Converting Colors with the new Membership Option!

The pro membership hides all ads, plus gives you double the colors in the color bucket, and more awesome pro features!

**[Learn more, Memberships starting at \\$2.50/m!](#)**

**Follow me  
on Twitter!**

@ConvertingColor