

# Converting Colors

Hex(45392E)

Have a look what the booklet for  
Hex(45392E) contains.

<b>Hex(45392E)</b> .....	3
<b><i>Conversions</i></b> .....	4
<b><i>Details</i></b> .....	6
<b><i>Harmonies</i></b> .....	11
<b><i>Previews</i></b> .....	23
<b><i>Color Blindness Simulation</i></b> .....	26
<b><i>CSS Examples</i></b> .....	29

# Color

Hex(45392E)

# Conversions

## Conversions Part 1

Format	Color
Hex	45392E
RGB	69, 57, 46
RGB Percent	27%, 22%, 18%
CMY	0.7294, 0.7765, 0.8196
CMYK	0.00, 0.17, 0.33, 0.73
HSL	29°, 20%, 23%
HSV	29°, 33%, 27%
XYZ	4.4105, 4.3887, 3.1994
YIQ	59.3340, 10.6830, -0.8770

# Conversions

## Conversions Part 2

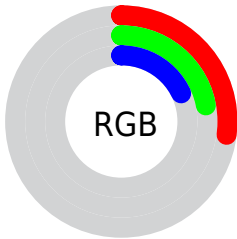
<b>Format</b>	<b>Color</b>
<b>R<sub>YB</sub></b>	69, 67, 46
Decimal	4536622
CIE Lab	24.92, 3.31, 8.83
CIE LCh	25, 9.430, 69.462
Yxy	4.3887, 0.3676, 0.3658
Android (android.graphics.Color)	4282726702 (0xFF45392E)
YUV	59.3340, -6.5737, 8.4771
Hunter-Lab	20.9493, 0.9189, 5.6096

# Details

The Hex color **45392E** is a dark color, and the websafe version is hex **333333**. A complement of this color would be **2E3A45**, and the grayscale version is **3B3B3B**.

A 20% lighter version of the original color is **76685C**, and **1B0E00** is the 20% darker color. If you saturate the color by 10%, you get **453527**, and if you desaturate by 10%, it is **453D35**.

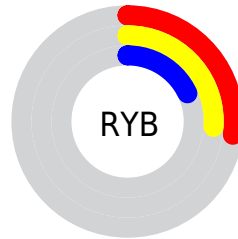
# Distribution



Red (27%)

Green (22%)

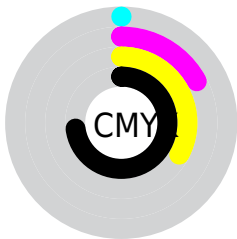
Blue (18%)



Red (27%)

Yellow (26%)

Blue (18%)

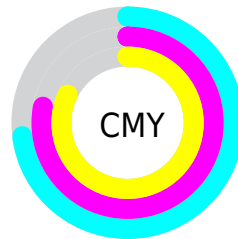


Cyan (0%)

Magenta (17%)

Yellow (33%)

Black (73%)



Cyan (73%)

Magenta (78%)

Yellow (82%)

# Brightness & Saturation Gradients

These gradients show how the Hex color 45392E changes by changing the brightness by 10 percent. The first figure shows a shift by +10% for each color and the second figure -10%.

Similar to the brightness gradients but the following saturation gradients show a change of the Hex color 45392E by changing the saturation by 10% instead.





45392E



45392E

FFFFFF



2E2419



76685C



1B0E00



8F8174



000000



AA9B8E



C5B6A8



E2D1C4



FE0000



FFFFFF



45392E



45392E

■ 453527

■ 453D35

■ 453220

■ 45403C

■ 452E19

■ 454443

■ 452B12

■ 45474A

■ 45270C

■ 454B51

■ 452305

■ 454F57

■ 452100

■ 45525E

■ 455665

■ 45596C

# Harmonies

## Analogous

The Analogous color harmony consists of three colors that are next to each other on the color wheel.



493732



45392E



3E3B2D

# Triad

The Triadic color harmony groups three colors that are evenly spaced from another and form a triangle on the color wheel.



45392E



293F3D



3F3946

# Complementary

The Complementary color scheme is a pair of colors which are on the opposite of each other on the color wheel.



45392E



2E3A45

# Split Complementary

Split-complementary colors differ from the complementary color scheme. The scheme consists of three colors, the original color and two neighbors of the complement color.



363B49



45392E



283F44

# Square

The Square scheme is like the rectangle color scheme, but the four colors are evenly spaced on the color wheel.



45392E



2E3F36



2D3D48



463740

# Rectangle

The Rectangle color scheme consists of four colors that form a rectangle on the color wheel.



45392E



393D2F



2D3D48



3C3947



# Sweetspot

The Sweet Spot groups the original color and five complimentary colors.



45392E



595550



452E3A



2E2B28



ADADAD



2E2E2E



# Same Dimension

The Same Dimension uses a secret algorithm to generate beautiful new colors.



45392E



594736



45442E



242220



633000



E36D00



# Inverse Universe

The Inverse Universe completely reimagines the original color for something new.



2E3A45



364859



2E2F45



202224



003463

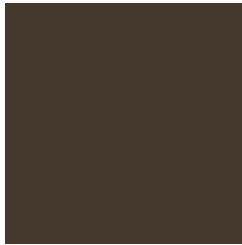


0076E3



# Previews

## White Background



This preview shows how the Hex color 45392E looks on a white background.

## Color Contrast Check

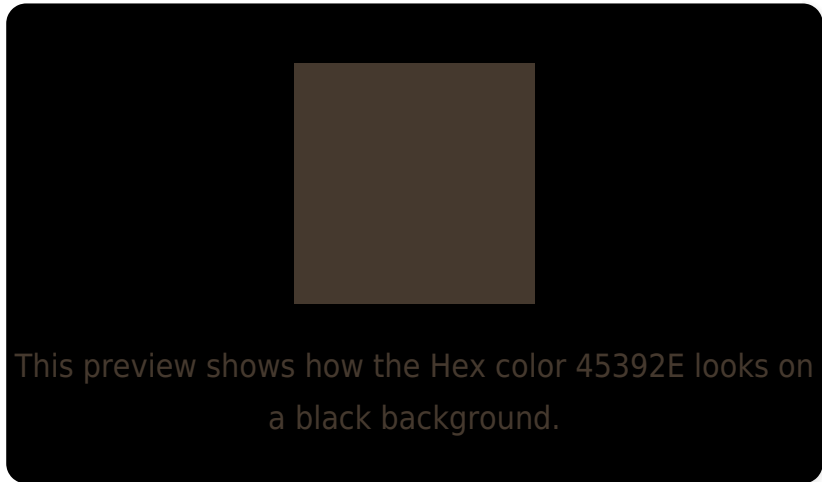
Large Text (above 18pt) WCAG AA ✓ Pass

Any Text WCAG AA ✓ Pass

Large Text (above 18pt) WCAG AAA ✓ Pass

Any Text WCAG AAA ✓ Pass

# Black Background



## Color Contrast Check

Large Text (above 18pt) WCAG AA × Fail

Any Text WCAG AA × Fail

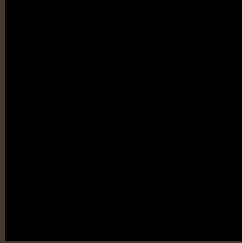
Large Text (above 18pt) WCAG AAA × Fail

Any Text WCAG AAA × Fail

If you want to check with other color combinations, try the [Color Contrast Checker](#).



## Hex 45392E Background



This preview shows how black text looks on a background with the Hex color 45392E.



This preview shows how white text looks on a background with the Hex color 45392E.

# Color Blindness Simulation

Color vision deficiency is a very complex topic, and I could not describe the different causes any better than Wikipedia does, so if you want to learn more, you should check out their [article about color blindness](#).

## Dichromacy



**Original Color**  
45392E

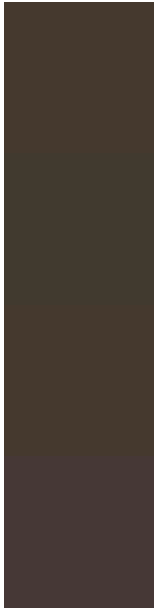
**Protanopia**  
3F3B2F

**Deuteranopia**  
45392E



**Tritanopia**  
46373B

# Trichromacy



**Original Color**  
45392E

**Protanomaly**  
413A2F

**Deuteranomaly**  
45392E

**Tritanomaly**  
463836

# Monochromacy



**Original Color**  
45392E

**Achromatopsia**  
3B3B3B

**Achromatomaly**  
3F3A36

# CSS Examples

## Text

The CSS property to change the color of the text to Hex 45392E is called "color". The color property can be set on classes, ids or directly on the HTML element.

This example shows how text in the color #45392E looks like.

```
.text, #text, p{  
    color:#45392E  
}
```

If you want to add a text shadow in that color use the text-shadow property, you can generate a text shadow directly with our [CSS Text Shadow Generator](#).

Here you see how black text with a 4 pixel #45392E colored shadow looks like.

```
.shadow{ text-shadow: 4px 4px 2px #45392E
}
```

## Border

The CSS property to change the border of an element to Hex 45392E is called "border". The border property can be set on classes, ids or directly on the HTML element.

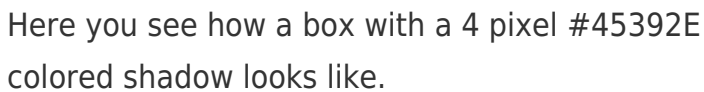
This example shows the color as border, it can be applied via the CSS property "border" or "border-color".

```
.border, #border, table{ border:4px solid
#45392E }
```

If only the border color should be changed use the property `border-color`.

```
.border{ border-color:#45392E }
```

If you want to add a box shadow in that color use:



Here you see how a box with a 4 pixel #45392E colored shadow looks like.

```
.boxshadow{ -moz-box-shadow:4px 4px 4px  
4px #45392E; -webkit-box-shadow:4px 4px  
4px 4px #45392E; box-shadow:4px 4px 4px  
4px #45392E }
```

# Background

The CSS property to change the background color of an element to Hex 45392E is called "background". The background property can be set on classes, ids or directly on the HTML element.

```
.background, #background, body{  
background:#45392E }
```

If only the background color should be changed can be used:

```
.background{ background-color:#45392E }
```

This example shows the color as background, it is applied via the CSS property "background".

To optimize and compress your CSS code, you can use our [online CSS compressor and optimizer](#) based on csstidy. If you want to create a linear or radial gradient as background or border, check our [CSS Gradient Generator](#).



Hey! You found this booklet interesting? Support Converting Colors with the new Membership Option!

The pro membership hides all ads, plus gives you double the colors in the color bucket, and more awesome pro features!

**[Learn more, Memberships starting at \\$2.50/m!](#)**

**Follow me  
on Twitter!**

@ConvertingColor