

Converting Colors

Hex(461A1A)

Have a look what the booklet for
Hex(461A1A) contains.

Hex(461A1A)	3
<i>Conversions</i>	4
<i>Details</i>	6
<i>Harmonies</i>	11
<i>Previews</i>	23
<i>Color Blindness Simulation</i>	26
<i>CSS Examples</i>	29

Color

Hex(461A1A)

Conversions

Conversions Part 1

Format	Color
Hex	461A1A
RGB	70, 26, 26
RGB Percent	27%, 10%, 10%
CMY	0.7255, 0.8980, 0.8980
CMYK	0.00, 0.63, 0.63, 0.73
HSL	0°, 46%, 19%
HSV	0°, 63%, 27%
XYZ	3.0816, 2.1155, 1.2232
YIQ	39.1560, 26.2240, 9.3280

Conversions

Conversions Part 2

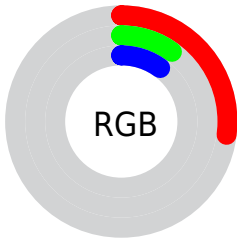
Format	Color
R_{YB}	70, 26, 26
Decimal	4594202
CIE Lab	16.08, 21.15, 10.52
CIE LCh	16, 23.623, 26.446
Yxy	2.1155, 0.4800, 0.3295
Android (android.graphics.Color)	4282784282 (0xFF461A1A)
YUV	39.1560, -6.4859, 27.0502
Hunter-Lab	14.5446, 12.3665, 5.1950

Details

The Hex color **461A1A** is a dark color, and the websafe version is hex **330000**. A complement of this color would be **1A4646**, and the grayscale version is **272727**.

A 20% lighter version of the original color is **794745**, and **0B0000** is the 20% darker color. If you saturate the color by 10%, you get **461313**, and if you desaturate by 10%, it is **462121**.

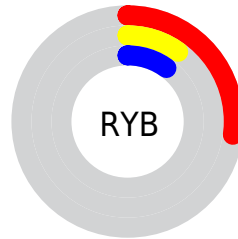
Distribution



Red (27%)

Green (10%)

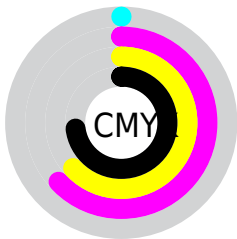
Blue (10%)



Red (27%)

Yellow (10%)

Blue (10%)

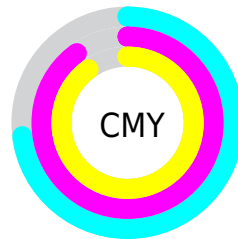


Cyan (0%)

Magenta (63%)

Yellow (63%)

Black (73%)



Cyan (73%)

Magenta (90%)

Yellow (90%)

Brightness & Saturation Gradients

These gradients show how the Hex color 461A1A changes by changing the brightness by 10 percent. The first figure shows a shift by +10% for each color and the second figure -10%.

Similar to the brightness gradients but the following saturation gradients show a change of the Hex color 461A1A by changing the saturation by 10% instead.



461A1A



461A1A

FFFFFFD



2F0300



794745



0B0000



945F5D



000000



B07875



CC928F



E8ADA9



FFC9C4



FFE5E0



461A1A



461A1A

■ 461313

■ 462121

■ 460C0C

■ 462828

■ 460505

■ 462F2F

■ 460000

■ 463636

■ 463D3D

■ 464444

■ 464B4B

■ 465252

■ 465959

Harmonies

Analogous

The Analogous color harmony consists of three colors that are next to each other on the color wheel.



45192B



461A1A



3F200A

Triad

The Triadic color harmony groups three colors that are evenly spaced from another and form a triangle on the color wheel.



461A1A



0B2E15



002A49

Complementary

The Complementary color scheme is a pair of colors which are on the opposite of each other on the color wheel.



461A1A



1A4646

Split Complementary

Split-complementary colors differ from the complementary color scheme. The scheme consists of three colors, the original color and two neighbors of the complement color.



002E44



461A1A



003025

Square

The Square scheme is like the rectangle color scheme, but the four colors are evenly spaced on the color wheel.



461A1A



232B05



003036



252446

Rectangle

The Rectangle color scheme consists of four colors that form a rectangle on the color wheel.



461A1A



382402



003036



002C48

Sweetspot

The Sweet Spot groups the original color and five complimentary colors.



461A1A



5C4A4A



461A46



2E2323



ADADAD



2E2E2E

Same Dimension

The Same Dimension uses a secret algorithm to generate beautiful new colors.



461A1A



5C1717



46301A



242020



630000



E30000

Inverse Universe

The Inverse Universe completely reimagines the original color for something new.



1A4646



175C5C



1A3046



202424



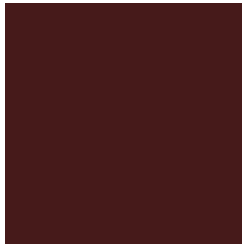
006363



00E3E3

Previews

White Background



This preview shows how the Hex color 461A1A looks on a white background.

Color Contrast Check

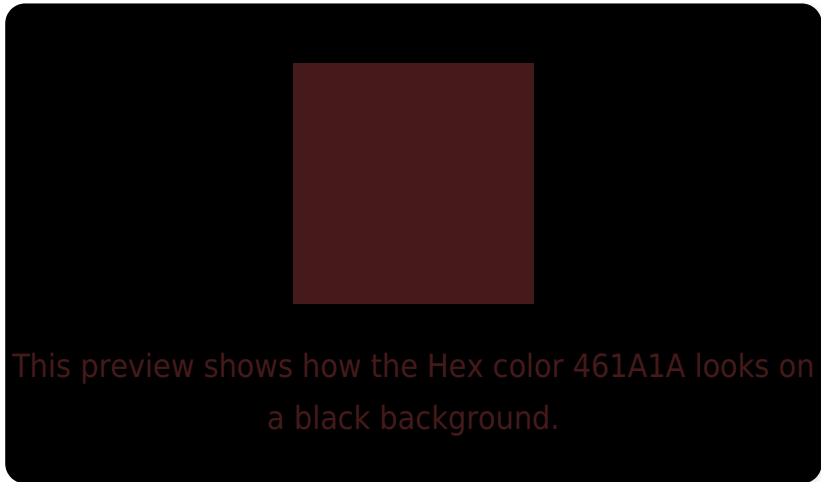
Large Text (above 18pt) WCAG AA ✓ Pass

Any Text WCAG AA ✓ Pass

Large Text (above 18pt) WCAG AAA ✓ Pass

Any Text WCAG AAA ✓ Pass

Black Background



Color Contrast Check

Large Text (above 18pt) WCAG AA × Fail

Any Text WCAG AA × Fail

Large Text (above 18pt) WCAG AAA × Fail

Any Text WCAG AAA × Fail

If you want to check with other color combinations, try the [Color Contrast Checker](#).

Hex 461A1A Background



This preview shows how black text looks on a background with the Hex color 461A1A.



This preview shows how white text looks on a background with the Hex color 461A1A.

Color Blindness Simulation

Color vision deficiency is a very complex topic, and I could not describe the different causes any better than Wikipedia does, so if you want to learn more, you should check out their [article about color blindness](#).

Dichromacy



Original Color
461A1A

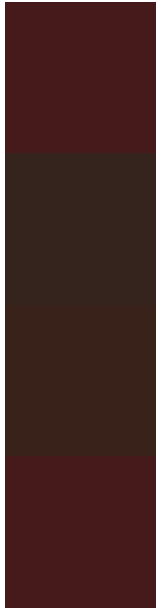
Protanopia
2C2920

Deuteranopia
322718



Tritanopia
461A1B

Trichromacy



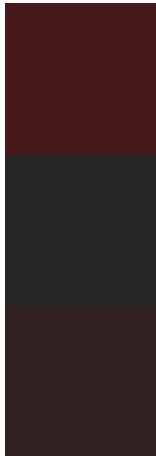
Original Color
461A1A

Protanomaly
35241E

Deuteranomaly
392219

Tritanomaly
461A1B

Monochromacy



Original Color
461A1A

Achromatopsia
272727

Achromatomaly
322222

CSS Examples

Text

The CSS property to change the color of the text to Hex 461A1A is called "color". The color property can be set on classes, ids or directly on the HTML element.

This example shows how text in the color #461A1A looks like.

```
.text, #text, p{  
    color:#461A1A  
}
```

If you want to add a text shadow in that color use the text-shadow property, you can generate a text shadow directly with our [CSS Text Shadow Generator](#).

Here you see how black text with a 4 pixel #461A1A colored shadow looks like.

```
.shadow{ text-shadow: 4px 4px 2px #461A1A
}
```

Border

The CSS property to change the border of an element to Hex 461A1A is called "border". The border property can be set on classes, ids or directly on the HTML element.

This example shows the color as border, it can be applied via the CSS property "border" or "border-color".

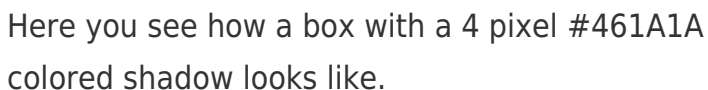
```
.border, #border, table{ border:4px solid
#461A1A }
```

If only the border color should be changed use the property `border-color`.

```
.border{ border-color:#461A1A }
```

If you want to add a box shadow in that color use:

Here you see how a box with a 4 pixel #461A1A colored shadow looks like.

A rectangular box with a dark red border and a dark red shadow. The box is white with a thin dark red border. Below and to the right of the box is a dark red shadow, creating a 3D effect. The shadow is rectangular and matches the color of the border.

```
.boxshadow{ -moz-box-shadow:4px 4px 4px  
4px #461A1A; -webkit-box-shadow:4px 4px  
4px 4px #461A1A; box-shadow:4px 4px 4px  
4px #461A1A }
```

Background

The CSS property to change the background color of an element to Hex 461A1A is called "background". The background property can be set on classes, ids or directly on the HTML element.

```
.background, #background, body{  
background:#461A1A }
```

If only the background color should be changed can be used:

```
.background{ background-color:#461A1A }
```

This example shows the color as background, it is applied via the CSS property "background".

To optimize and compress your CSS code, you can use our [online CSS compressor and optimizer](#) based on csstidy. If you want to create a linear or radial gradient as background or border, check our [CSS Gradient Generator](#).

Hey! You found this booklet interesting? Support Converting Colors with the new Membership Option!

The pro membership hides all ads, plus gives you double the colors in the color bucket, and more awesome pro features!

[Learn more, Memberships starting at \\$2.50/m!](#)

**Follow me
on Twitter!**

@ConvertingColor