

Converting Colors

Hex(472F2F)

Have a look what the booklet for
Hex(472F2F) contains.

Hex(472F2F)	3
<i>Conversions</i>	4
<i>Details</i>	6
<i>Harmonies</i>	11
<i>Previews</i>	23
<i>Color Blindness Simulation</i>	26
<i>CSS Examples</i>	29

Color

Hex(472F2F)

Conversions

Conversions Part 1

Format	Color
Hex	472F2F
RGB	71, 47, 47
RGB Percent	28%, 18%, 18%
CMY	0.7216, 0.8157, 0.8157
CMYK	0.00, 0.34, 0.34, 0.72
HSL	0°, 20%, 23%
HSV	0°, 34%, 28%
XYZ	4.1281, 3.5779, 3.1623
YIQ	54.1760, 14.3040, 5.0880

Conversions

Conversions Part 2

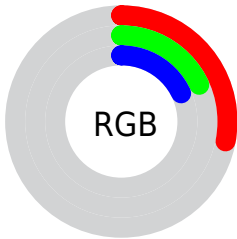
Format	Color
RYB	71, 47, 47
Decimal	4665135
CIELab	22.22, 11.00, 4.43
CIElCh	22, 11.855, 21.921
Yxy	3.5779, 0.3798, 0.3292
Android (android.graphics.Color)	4282855215 (0xFF472F2F)
YUV	54.1760, -3.5378, 14.7546
Hunter-Lab	18.9152, 5.8549, 3.3283

Details

The Hex color **472F2F** is a dark color, and the websafe version is hex **333333**. A complement of this color would be **2F4747**, and the grayscale version is **363636**.

A 20% lighter version of the original color is **785D5D**, and **1D0000** is the 20% darker color. If you saturate the color by 10%, you get **472828**, and if you desaturate by 10%, it is **473636**.

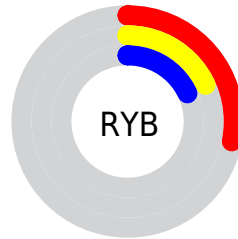
Distribution



Red (28%)

Green (18%)

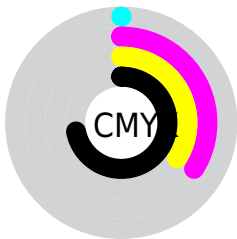
Blue (18%)



Red (28%)

Yellow (18%)

Blue (18%)

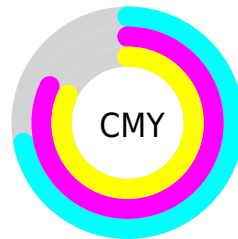


Cyan (0%)

Magenta (34%)

Yellow (34%)

Black (72%)



Cyan (72%)

Magenta (82%)

Yellow (82%)

Brightness & Saturation Gradients

These gradients show how the Hex color 472F2F changes by changing the brightness by 10 percent. The first figure shows a shift by +10% for each color and the second figure -10%.

Similar to the brightness gradients but the following saturation gradients show a change of the Hex color 472F2F by changing the saturation by 10% instead.



472F2F



472F2F

FFFFFF



301A1A



785D5D



1D0000



927675



000000



AD908F



C9AAA9



E5C5C5



FFE1E1



FFFEFD



472F2F



472F2F

■ 472828

■ 473636

■ 472121

■ 473D3D

■ 471A1A

■ 474444

■ 471313

■ 474B4B

■ 470C0C

■ 475353

■ 470404

■ 475A5A

■ 470000

■ 476161

■ 476868

■ 476F6F

Harmonies

Analogous

The Analogous color harmony consists of three colors that are next to each other on the color wheel.



452F38



472F2F



443128

Triad

The Triadic color harmony groups three colors that are evenly spaced from another and form a triangle on the color wheel.



472F2F



2B392A



273746

Complementary

The Complementary color scheme is a pair of colors which are on the opposite of each other on the color wheel.



472F2F



2F4747

Split Complementary

Split-complementary colors differ from the complementary color scheme. The scheme consists of three colors, the original color and two neighbors of the complement color.



1D3943



472F2F



213A32

Square

The Square scheme is like the rectangle color scheme, but the four colors are evenly spaced on the color wheel.



472F2F



353725



1B3A3B



333445

Rectangle

The Rectangle color scheme consists of four colors that form a rectangle on the color wheel.



472F2F



403325



1B3A3B



233846

Sweetspot

The Sweet Spot groups the original color and five complimentary colors.



472F2F



5C5353



472F47



2E2828



ADADAD



2E2E2E

Same Dimension

The Same Dimension uses a secret algorithm to generate beautiful new colors.



472F2F



5C3636



473B2F



242020



630000



E30000

Inverse Universe

The Inverse Universe completely reimagines the original color for something new.



2F4747



365C5C



2F3B47



202424



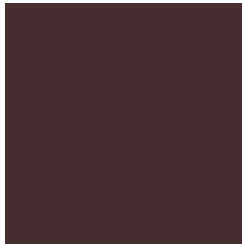
006363



00E3E3

Previews

White Background



This preview shows how the Hex color 472F2F looks on a white background.

Color Contrast Check

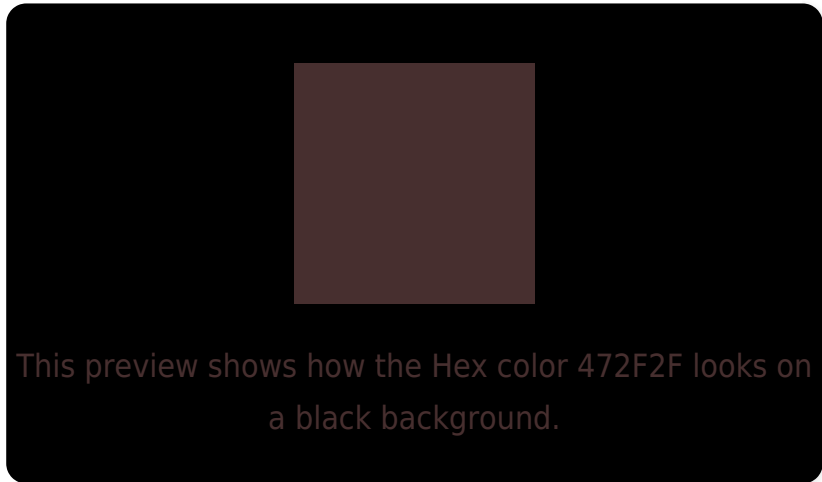
Large Text (above 18pt) WCAG AA ✓ Pass

Any Text WCAG AA ✓ Pass

Large Text (above 18pt) WCAG AAA ✓ Pass

Any Text WCAG AAA ✓ Pass

Black Background



Color Contrast Check

Large Text (above 18pt) WCAG AA × Fail

Any Text WCAG AA × Fail

Large Text (above 18pt) WCAG AAA × Fail

Any Text WCAG AAA × Fail

If you want to check with other color combinations, try the [Color Contrast Checker](#).

Hex 472F2F Background



This preview shows how black text looks on a background with the Hex color 472F2F.

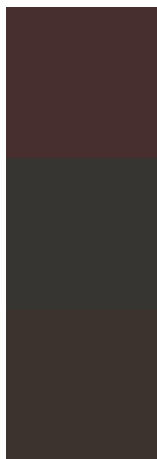


This preview shows how white text looks on a background with the Hex color 472F2F.

Color Blindness Simulation

Color vision deficiency is a very complex topic, and I could not describe the different causes any better than Wikipedia does, so if you want to learn more, you should check out their [article about color blindness](#).

Dichromacy



Original Color

472F2F

Protanopia

373532

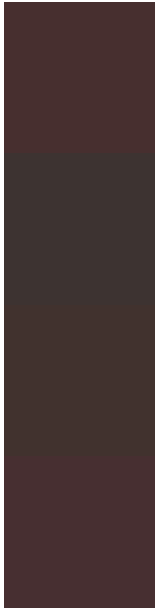
Deuteranopia

3D332E



Tritanopia
472F32

Trichromacy



Original Color

472F2F

Protanomaly

3D3331

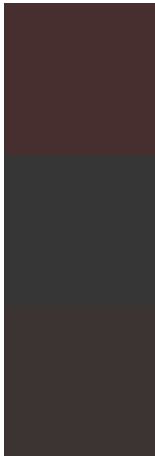
Deuteranomaly

41322E

Tritanomaly

472F31

Monochromacy



Original Color

472F2F

Achromatopsia

363636

Achromatomaly

3C3333

CSS Examples

Text

The CSS property to change the color of the text to Hex 472F2F is called "color". The color property can be set on classes, ids or directly on the HTML element.

This example shows how text in the color #472F2F looks like.

```
.text, #text, p{  
    color:#472F2F  
}
```

If you want to add a text shadow in that color use the text-shadow property, you can generate a text shadow directly with our [CSS Text Shadow Generator](#).

Here you see how black text with a 4 pixel #472F2F colored shadow looks like.

```
.shadow{ text-shadow: 4px 4px 2px #472F2F
}
```

Border

The CSS property to change the border of an element to Hex 472F2F is called "border". The border property can be set on classes, ids or directly on the HTML element.

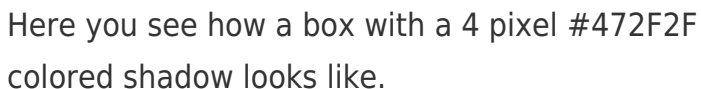
This example shows the color as border, it can be applied via the CSS property "border" or "border-color".

```
.border, #border, table{ border:4px solid
#472F2F }
```

If only the border color should be changed use the property `border-color`.

```
.border{ border-color:#472F2F }
```

If you want to add a box shadow in that color use:



Here you see how a box with a 4 pixel #472F2F colored shadow looks like.

```
.boxshadow{ -moz-box-shadow:4px 4px 4px  
4px #472F2F; -webkit-box-shadow:4px 4px  
4px 4px #472F2F; box-shadow:4px 4px 4px  
4px #472F2F }
```

Background

The CSS property to change the background color of an element to Hex 472F2F is called "background". The background property can be set on classes, ids or directly on the HTML element.

```
.background, #background, body{  
background:#472F2F }
```

If only the background color should be changed can be used:

```
.background{ background-color:#472F2F }
```

This example shows the color as background, it is applied via the CSS property "background".

To optimize and compress your CSS code, you can use our [online CSS compressor and optimizer](#) based on csstidy. If you want to create a linear or radial gradient as background or border, check our [CSS Gradient Generator](#).

Hey! You found this booklet interesting? Support Converting Colors with the new Membership Option!

The pro membership hides all ads, plus gives you double the colors in the color bucket, and more awesome pro features!

[Learn more, Memberships starting at \\$2.50/m!](#)

**Follow me
on Twitter!**

@ConvertingColor