

# Converting Colors

Hex(48196B)

Have a look what the booklet for  
Hex(48196B) contains.

<b>Hex(48196B)</b> .....	3
<i><b>Conversions</b></i> .....	4
<i><b>Details</b></i> .....	6
<i><b>Harmonies</b></i> .....	11
<i><b>Previews</b></i> .....	23
<i><b>Color Blindness Simulation</b></i> .....	26
<i><b>CSS Examples</b></i> .....	29

**Color**

**Hex(48196B)**

# Conversions

## Conversions Part 1

Format	Color
Hex	48196B
RGB	72, 25, 107
RGB Percent	28%, 10%, 42%
CMY	0.7176, 0.9020, 0.5804
CMYK	0.33, 0.77, 0.00, 0.58
HSL	274°, 62%, 26%
HSV	274°, 77%, 42%
XYZ	5.6740, 3.1345, 14.2159
YIQ	48.4010, 1.6900, 35.4660

# Conversions

## Conversions Part 2

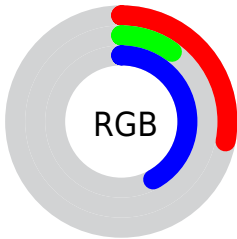
<b>Format</b>	<b>Color</b>
<b>R<sub>YB</sub></b>	72, 25, 107
Decimal	4725099
CIE <sub>Lab</sub>	20.57, 37.76, -38.40
CIE <sub>LCh</sub>	21, 53.858, 314.519
Yxy	3.1345, 0.2464, 0.1361
Android (android.graphics.Color)	4282915179 (0xFF48196B)
YUV	48.4010, 28.8893, 20.6963
Hunter-Lab	17.7046, 26.2227, -35.2137

# Details

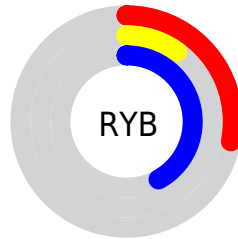
The Hex color **48196B** is a dark color, and the websafe version is hex **330066**. A complement of this color would be **3C6B19**, and the grayscale version is **303030**.

A 20% lighter version of the original color is **7C499F**, and **1B003B** is the 20% darker color. If you saturate the color by 10%, you get **430E6B**, and if you desaturate by 10%, it is **4D246B**.

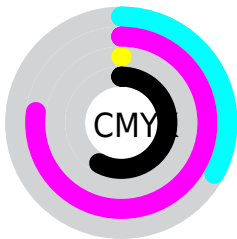
# Distribution



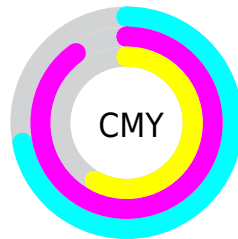
- Red (28%)
- Green (10%)
- Blue (42%)



- Red (28%)
- Yellow (10%)
- Blue (42%)



- Cyan (33%)
- Magenta (77%)
- Yellow (0%)
- Black (58%)



- Cyan (72%)
- Magenta (90%)
- Yellow (58%)

# Brightness & Saturation Gradients

These gradients show how the Hex color 48196B changes by changing the brightness by 10 percent. The first figure shows a shift by +10% for each color and the second figure -10%.

Similar to the brightness gradients but the following saturation gradients show a change of the Hex color 48196B by changing the saturation by 10% instead.



 48196B

 48196B

FFFFFF

 2F0052

 7C499F

 1B003B

 9762BA

 000224

 B37CD6

 00000C

 CF96F3

 000000

 ECB1FF

 FFCDFD

 FFEAFF

 48196B

 48196B

■ 430E6B

■ 4D246B

■ 3F046B

■ 512E6B

■ 3D006B

■ 56396B

■ 5A446B

■ 5F4E6B

■ 63596B

■ 68646B

■ 6D6F6B

■ 71796B

# Harmonies

## Analogous

The Analogous color harmony consists of three colors that are next to each other on the color wheel.



003180



48196B



6B0048

# Triad

The Triadic color harmony groups three colors that are evenly spaced from another and form a triangle on the color wheel.



48196B



4F2800



004145

# Complementary

The Complementary color scheme is a pair of colors which are on the opposite of each other on the color wheel.



48196B



3C6B19

# Split Complementary

Split-complementary colors differ from the complementary color scheme. The scheme consists of three colors, the original color and two neighbors of the complement color.



00401B



48196B



2C3600

# Square

The Square scheme is like the rectangle color scheme, but the four colors are evenly spaced on the color wheel.



48196B



680B00



003D00



004169

# Rectangle

The Rectangle color scheme consists of four colors that form a rectangle on the color wheel.



48196B



73002E



003D00



004137



# Sweetspot

The Sweet Spot groups the original color and five complimentary colors.



48196B



7E6C8C



193D6B



3F3347



C7C7C7



474747



# Same Dimension

The Same Dimension uses a secret algorithm to generate beautiful new colors.



48196B



550B8C



6B1966



333036



430075



8C00F5



# Inverse Universe

The Inverse Universe completely reimagines the original color for something new.



6B193C



8C0B42



196B1E



363032



750032

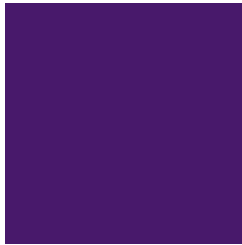


F50068



# Previews

## White Background



This preview shows how the Hex color 48196B looks on a white background.

## Color Contrast Check

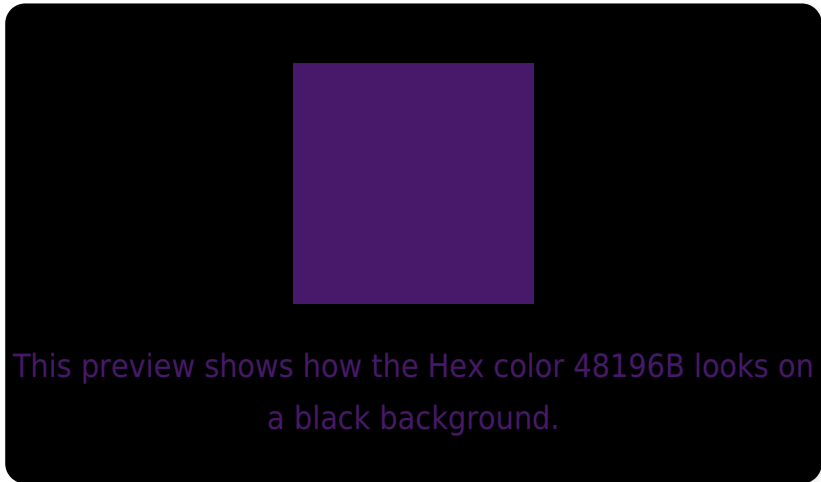
Large Text (above 18pt) WCAG AA ✓ Pass

Any Text WCAG AA ✓ Pass

Large Text (above 18pt) WCAG AAA ✓ Pass

Any Text WCAG AAA ✓ Pass

# Black Background



## Color Contrast Check

Large Text (above 18pt) WCAG AA × Fail

Any Text WCAG AA × Fail

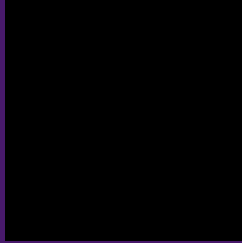
Large Text (above 18pt) WCAG AAA × Fail

Any Text WCAG AAA × Fail

If you want to check with other color combinations, try the [Color Contrast Checker](#).



## Hex 48196B Background



This preview shows how black text looks on a background with the Hex color 48196B.



This preview shows how white text looks on a background with the Hex color 48196B.

# Color Blindness Simulation

Color vision deficiency is a very complex topic, and I could not describe the different causes any better than Wikipedia does, so if you want to learn more, you should check out their [article about color blindness](#).

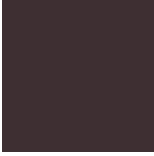
## Dichromacy



**Original Color**  
48196B

**Protanopia**  
003167

**Deuteranopia**  
00345A



**Tritanopia**  
3E2F32

# Trichromacy



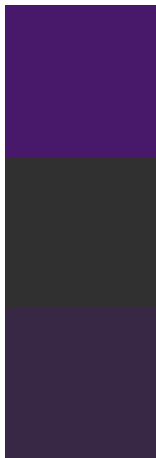
**Original Color**  
48196B

**Protanomaly**  
1A2868

**Deuteranomaly**  
1A2A60

**Tritanomaly**  
422747

# Monochromacy



**Original Color**  
48196B

**Achromatopsia**  
303030

**Achromatomaly**  
392845

# CSS Examples

## Text

The CSS property to change the color of the text to Hex 48196B is called "color". The color property can be set on classes, ids or directly on the HTML element.

This example shows how text in the color #48196B looks like.

```
.text, #text, p{  
    color:#48196B  
}
```

If you want to add a text shadow in that color use the text-shadow property, you can generate a text shadow directly with our [CSS Text Shadow Generator](#).

Here you see how black text with a 4 pixel #48196B colored shadow looks like.

```
.shadow{ text-shadow: 4px 4px 2px #48196B
}
```

## Border

The CSS property to change the border of an element to Hex 48196B is called "border". The border property can be set on classes, ids or directly on the HTML element.

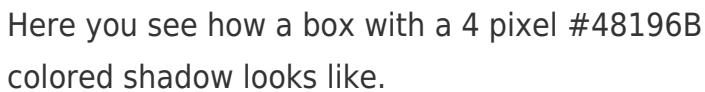
This example shows the color as border, it can be applied via the CSS property "border" or "border-color".

```
.border, #border, table{ border:4px solid
#48196B }
```

If only the border color should be changed use the property `border-color`.

```
.border{ border-color:#48196B }
```

If you want to add a box shadow in that color use:



Here you see how a box with a 4 pixel #48196B colored shadow looks like.

```
.boxshadow{ -moz-box-shadow:4px 4px 4px  
4px #48196B; -webkit-box-shadow:4px 4px  
4px 4px #48196B; box-shadow:4px 4px 4px  
4px #48196B }
```

# Background

The CSS property to change the background color of an element to Hex 48196B is called "background". The background property can be set on classes, ids or directly on the HTML element.

```
.background, #background, body{  
background:#48196B }
```

If only the background color should be changed can be used:

```
.background{ background-color:#48196B }
```

This example shows the color as background, it is applied via the CSS property "background".

To optimize and compress your CSS code, you can use our [online CSS compressor and optimizer](#) based on csstidy. If you want to create a linear or radial gradient as background or border, check our [CSS Gradient Generator](#).



# Hey! You found this booklet interesting? Support Converting Colors with the new Membership Option!

The pro membership hides all ads, plus gives you double the colors in the color bucket, and more awesome pro features!

**[Learn more, Memberships starting at \\$2.50/m!](#)**

**Follow me  
on Twitter!**

@ConvertingColor