

Converting Colors

Hex(48242D)

Have a look what the booklet for
Hex(48242D) contains.

Hex(48242D)	3
<i>Conversions</i>	4
<i>Details</i>	6
<i>Harmonies</i>	11
<i>Previews</i>	23
<i>Color Blindness Simulation</i>	26
<i>CSS Examples</i>	29

Color

Hex(48242D)

Conversions

Conversions Part 1

Format	Color
Hex	48242D
RGB	72, 36, 45
RGB Percent	28%, 14%, 18%
CMY	0.7176, 0.8588, 0.8235
CMYK	0.00, 0.50, 0.37, 0.72
HSL	345°, 33%, 21%
HSV	345°, 50%, 28%
XYZ	3.7770, 2.8289, 2.8296
YIQ	47.7900, 18.5670, 10.4310

Conversions

Conversions Part 2

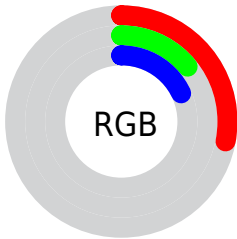
Format	Color
R_{YB}	72, 36, 45
Decimal	4727853
CIE Lab	19.35, 18.27, 1.70
CIE LCh	19, 18.352, 5.315
Yxy	2.8289, 0.4003, 0.2998
Android (android.graphics.Color)	4282917933 (0xFF48242D)
YUV	47.7900, -1.3755, 21.2322
Hunter-Lab	16.8194, 10.6505, 1.7990

Details

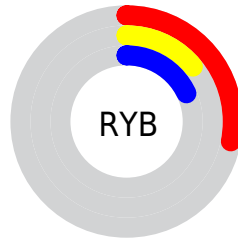
The Hex color **48242D** is a dark color, and the websafe version is hex **663333**. A complement of this color would be **24483F**, and the grayscale version is **303030**.

A 20% lighter version of the original color is **7A525B**, and **1D0001** is the 20% darker color. If you saturate the color by 10%, you get **481D28**, and if you desaturate by 10%, it is **482B32**.

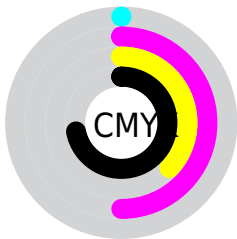
Distribution



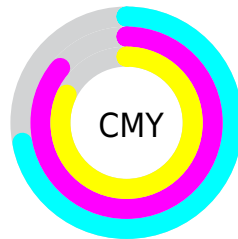
- Red (28%)
- Green (14%)
- Blue (18%)



- Red (28%)
- Yellow (14%)
- Blue (18%)



- Cyan (0%)
- Magenta (50%)
- Yellow (37%)
- Black (72%)



- Cyan (72%)
- Magenta (86%)
- Yellow (82%)

Brightness & Saturation Gradients

These gradients show how the Hex color 48242D changes by changing the brightness by 10 percent. The first figure shows a shift by +10% for each color and the second figure -10%.

Similar to the brightness gradients but the following saturation gradients show a change of the Hex color 48242D by changing the saturation by 10% instead.



48242D



48242D

FFFFFF



300F18



7A525B



1D0001



946A73



000000



AF838D



CB9EA7



E7B9C2



FFD4DE



FFF1FA



48242D



48242D

■ 481D28

■ 482B32

■ 481622

■ 483238

■ 480E1D

■ 483A3D

■ 480717

■ 484143

■ 480012

■ 484848

■ 484F4D

■ 485653

■ 485E58

■ 48655E

Harmonies

Analogous

The Analogous color harmony consists of three colors that are next to each other on the color wheel.



41263A



48242D



472620

Triad

The Triadic color harmony groups three colors that are evenly spaced from another and form a triangle on the color wheel.



48242D



273318



003347

Complementary

The Complementary color scheme is a pair of colors which are on the opposite of each other on the color wheel.



48242D



24483F

Split Complementary

Split-complementary colors differ from the complementary color scheme. The scheme consists of three colors, the original color and two neighbors of the complement color.



00353E



48242D



163523

Square

The Square scheme is like the rectangle color scheme, but the four colors are evenly spaced on the color wheel.



48242D



352F14



003631



1E2F49

Rectangle

The Rectangle color scheme consists of four colors that form a rectangle on the color wheel.



48242D



432919



003631



003445

Sweetspot

The Sweet Spot groups the original color and five complimentary colors.



48242D



5E5054



3F2448



30282A



B0B0B0



303030

Same Dimension

The Same Dimension uses a secret algorithm to generate beautiful new colors.



48242D



5E2634



482D24



242021



630019



E30039

Inverse Universe

The Inverse Universe completely reimagines the original color for something new.



48242D



5E2634



243F48



242021



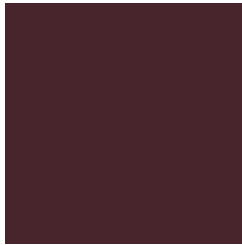
630019



E30039

Previews

White Background



This preview shows how the Hex color 48242D looks on a white background.

Color Contrast Check

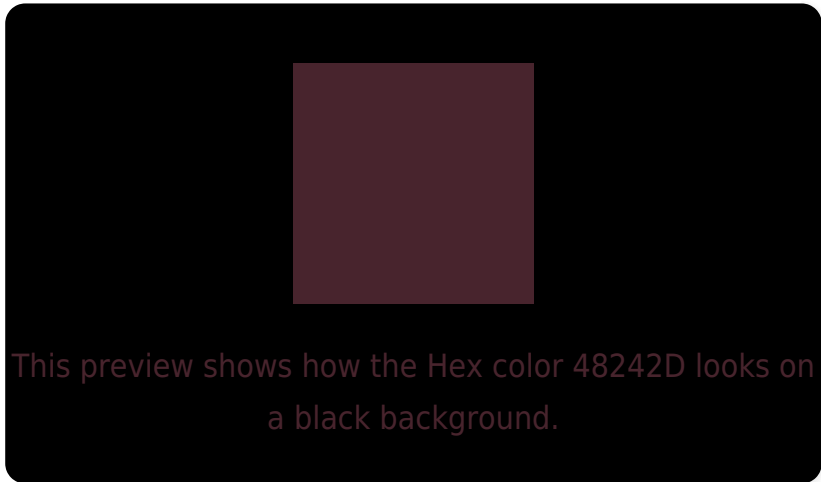
Large Text (above 18pt) WCAG AA ✓ Pass

Any Text WCAG AA ✓ Pass

Large Text (above 18pt) WCAG AAA ✓ Pass

Any Text WCAG AAA ✓ Pass

Black Background



Color Contrast Check

Large Text (above 18pt) WCAG AA × Fail

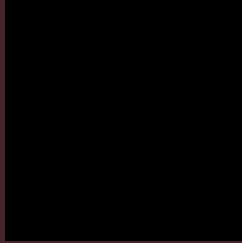
Any Text WCAG AA × Fail

Large Text (above 18pt) WCAG AAA × Fail

Any Text WCAG AAA × Fail

If you want to check with other color combinations, try the [Color Contrast Checker](#).

Hex 48242D Background



This preview shows how black text looks on a background with the Hex color 48242D.



This preview shows how white text looks on a background with the Hex color 48242D.

Color Blindness Simulation

Color vision deficiency is a very complex topic, and I could not describe the different causes any better than Wikipedia does, so if you want to learn more, you should check out their [article about color blindness](#).


Dichromacy



Original Color
48242D

Protanopia
2F2F33

Deuteranopia
362E2B



Tritanopia
482528

Trichromacy



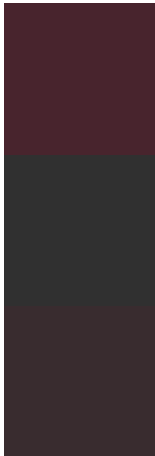
Original Color
48242D

Protanomaly
382B31

Deuteranomaly
3D2A2C

Tritanomaly
48252A

Monochromacy



Original Color
48242D

Achromatopsia
303030

Achromatomaly
392C2F

CSS Examples

Text

The CSS property to change the color of the text to Hex 48242D is called "color". The color property can be set on classes, ids or directly on the HTML element.

This example shows how text in the color #48242D looks like.

```
.text, #text, p{  
    color:#48242D  
}
```

If you want to add a text shadow in that color use the text-shadow property, you can generate a text shadow directly with our [CSS Text Shadow Generator](#).

Here you see how black text with a 4 pixel #48242D colored shadow looks like.

```
.shadow{ text-shadow: 4px 4px 2px #48242D
}
```

Border

The CSS property to change the border of an element to Hex 48242D is called "border". The border property can be set on classes, ids or directly on the HTML element.

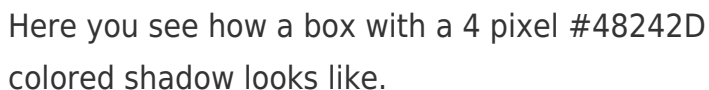
This example shows the color as border, it can be applied via the CSS property "border" or "border-color".

```
.border, #border, table{ border:4px solid
#48242D }
```

If only the border color should be changed use the property `border-color`.

```
.border{ border-color:#48242D }
```

If you want to add a box shadow in that color use:



Here you see how a box with a 4 pixel #48242D colored shadow looks like.

```
.boxshadow{ -moz-box-shadow:4px 4px 4px  
4px #48242D; -webkit-box-shadow:4px 4px  
4px 4px #48242D; box-shadow:4px 4px 4px  
4px #48242D }
```

Background

The CSS property to change the background color of an element to Hex 48242D is called "background". The background property can be set on classes, ids or directly on the HTML element.

```
.background, #background, body{  
background:#48242D }
```

If only the background color should be changed can be used:

```
.background{ background-color:#48242D }
```

This example shows the color as background, it is applied via the CSS property "background".

To optimize and compress your CSS code, you can use our [online CSS compressor and optimizer](#) based on csstidy. If you want to create a linear or radial gradient as background or border, check our [CSS Gradient Generator](#).

Hey! You found this booklet interesting? Support Converting Colors with the new Membership Option!

The pro membership hides all ads, plus gives you double the colors in the color bucket, and more awesome pro features!

[Learn more, Memberships starting at \\$2.50/m!](#)

**Follow me
on Twitter!**

@ConvertingColor