

Converting Colors

Hex(49186D)

Have a look what the booklet for
Hex(49186D) contains.

Hex(49186D)	3
<i>Conversions</i>	4
<i>Details</i>	6
<i>Harmonies</i>	11
<i>Previews</i>	23
<i>Color Blindness Simulation</i>	26
<i>CSS Examples</i>	29

Color

Hex(49186D)

Conversions

Conversions Part 1

Format	Color
Hex	49186D
RGB	73, 24, 109
RGB Percent	29%, 9%, 43%
CMY	0.7137, 0.9059, 0.5725
CMYK	0.33, 0.78, 0.00, 0.57
HSL	275°, 64%, 26%
HSV	275°, 78%, 43%
XYZ	5.8346, 3.1739, 14.7731
YIQ	48.3410, 1.9190, 36.8230

Conversions

Conversions Part 2

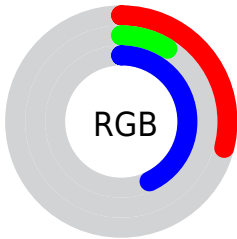
Format	Color
R_{YB}	73, 24, 109
Decimal	4790381
CIE Lab	20.73, 38.93, -39.45
CIE LCh	21, 55.425, 314.624
Yxy	3.1739, 0.2453, 0.1335
Android (android.graphics.Color)	4282980461 (0xFF49186D)
YUV	48.3410, 29.9049, 21.6259
Hunter-Lab	17.8153, 27.2827, -36.6946

Details

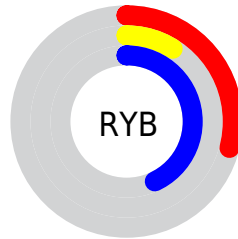
The Hex color **49186D** is a dark color, and the websafe version is hex **330066**. A complement of this color would be **3C6D18**, and the grayscale version is **303030**.

A 20% lighter version of the original color is **7D49A1**, and **1B003D** is the 20% darker color. If you saturate the color by 10%, you get **440D6D**, and if you desaturate by 10%, it is **4E236D**.

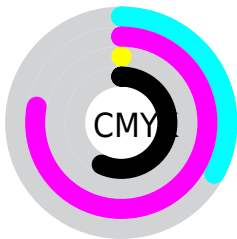
Distribution



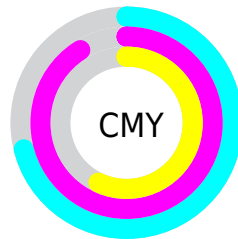
- Red (29%)
- Green (9%)
- Blue (43%)



- Red (29%)
- Yellow (9%)
- Blue (43%)



- Cyan (33%)
- Magenta (78%)
- Yellow (0%)
- Black (57%)



- Cyan (71%)
- Magenta (91%)
- Yellow (57%)

Brightness & Saturation Gradients

These gradients show how the Hex color 49186D changes by changing the brightness by 10 percent. The first figure shows a shift by +10% for each color and the second figure -10%.

Similar to the brightness gradients but the following saturation gradients show a change of the Hex color 49186D by changing the saturation by 10% instead.

■ 49186D

■ 49186D

FFFFFF

■ 2F0054

■ 7D49A1

■ 1B003D

■ 9862BD

■ 000226

■ B47BD9

■ 00010F

■ D096F5

■ 000000

■ EDB1FF

■ FFCDFE

■ FFE9FF

■ 49186D

■ 49186D

■ 440D6D

■ 4E236D

■ 40026D

■ 522E6D

■ 3F006D

■ 57396D

■ 5B446D

■ 604F6D

■ 65596D

■ 69646D

■ 6E6F6D

■ 737A6D

Harmonies

Analogous

The Analogous color harmony consists of three colors that are next to each other on the color wheel.



003183



49186D



6D0049

Triad

The Triadic color harmony groups three colors that are evenly spaced from another and form a triangle on the color wheel.



49186D



4F2800



004246

Complementary

The Complementary color scheme is a pair of colors which are on the opposite of each other on the color wheel.



49186D



3C6D18

Split Complementary

Split-complementary colors differ from the complementary color scheme. The scheme consists of three colors, the original color and two neighbors of the complement color.



00401A



49186D



2C3600

Square

The Square scheme is like the rectangle color scheme, but the four colors are evenly spaced on the color wheel.



49186D



690800



003D00



00416B

Rectangle

The Rectangle color scheme consists of four colors that form a rectangle on the color wheel.



49186D



75002E



003D00



004137

Sweetspot

The Sweet Spot groups the original color and five complimentary colors.



49186D



816E8F



183D6D



3F3347



C7C7C7



474747

Same Dimension

The Same Dimension uses a secret algorithm to generate beautiful new colors.



49186D



56098F



6D1867



333036



440075



8D00F5

Inverse Universe

The Inverse Universe completely reimagines the original color for something new.



6D183C



8F0941



186D1E



363032



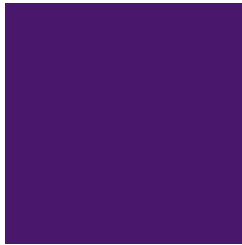
750032



F50068

Previews

White Background



This preview shows how the Hex color 49186D looks on a white background.

Color Contrast Check

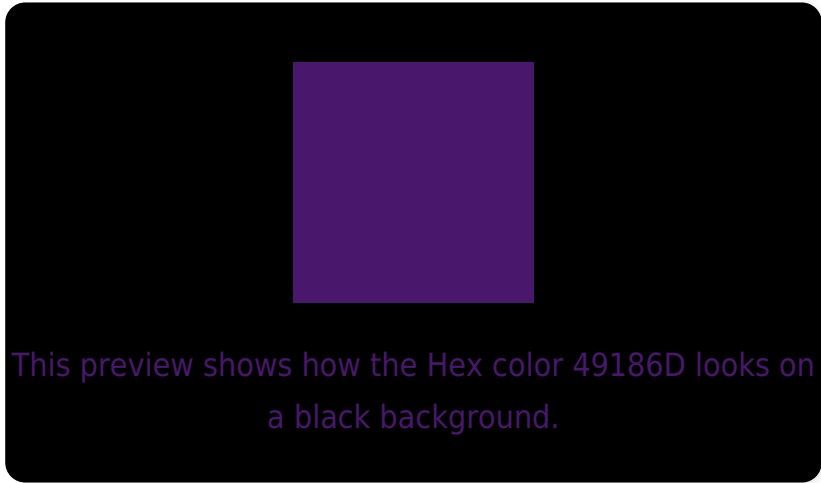
Large Text (above 18pt) WCAG AA ✓ Pass

Any Text WCAG AA ✓ Pass

Large Text (above 18pt) WCAG AAA ✓ Pass

Any Text WCAG AAA ✓ Pass

Black Background



Color Contrast Check

Large Text (above 18pt) WCAG AA × Fail

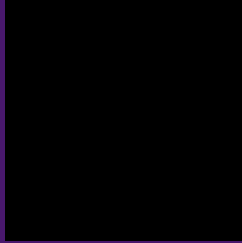
Any Text WCAG AA × Fail

Large Text (above 18pt) WCAG AAA × Fail

Any Text WCAG AAA × Fail

If you want to check with other color combinations, try the [Color Contrast Checker](#).

Hex 49186D Background



This preview shows how black text looks on a background with the Hex color 49186D.



This preview shows how white text looks on a background with the Hex color 49186D.

Color Blindness Simulation

Color vision deficiency is a very complex topic, and I could not describe the different causes any better than Wikipedia does, so if you want to learn more, you should check out their [article about color blindness](#).

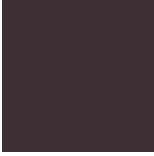
Dichromacy



Original Color
49186D

Protanopia
003168

Deuteranopia
00345B



Tritanopia
3E2F33

Trichromacy



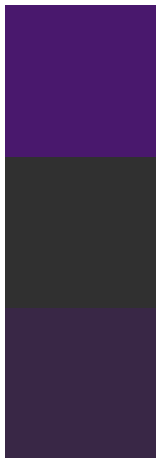
Original Color
49186D

Protanomaly
1B286A

Deuteranomaly
1B2A62

Tritanomaly
422748

Monochromacy



Original Color
49186D

Achromatopsia
303030

Achromatomaly
392746

CSS Examples

Text

The CSS property to change the color of the text to Hex 49186D is called "color". The color property can be set on classes, ids or directly on the HTML element.

This example shows how text in the color #49186D looks like.

```
.text, #text, p{  
    color:#49186D  
}
```

If you want to add a text shadow in that color use the text-shadow property, you can generate a text shadow directly with our [CSS Text Shadow Generator](#).

Here you see how black text with a 4 pixel #49186D colored shadow looks like.

```
.shadow{ text-shadow: 4px 4px 2px #49186D  
}
```

Border

The CSS property to change the border of an element to Hex 49186D is called "border". The border property can be set on classes, ids or directly on the HTML element.

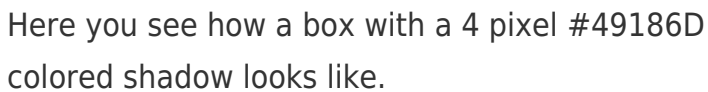
This example shows the color as border, it can be applied via the CSS property "border" or "border-color".

```
.border, #border, table{ border:4px solid  
#49186D }
```

If only the border color should be changed use the property `border-color`.

```
.border{ border-color:#49186D }
```

If you want to add a box shadow in that color use:



Here you see how a box with a 4 pixel #49186D colored shadow looks like.

```
.boxshadow{ -moz-box-shadow:4px 4px 4px  
4px #49186D; -webkit-box-shadow:4px 4px  
4px 4px #49186D; box-shadow:4px 4px 4px  
4px #49186D }
```

Background

The CSS property to change the background color of an element to Hex 49186D is called "background". The background property can be set on classes, ids or directly on the HTML element.

```
.background, #background, body{  
background:#49186D }
```

If only the background color should be changed can be used:

```
.background{ background-color:#49186D }
```

This example shows the color as background, it is applied via the CSS property "background".

To optimize and compress your CSS code, you can use our [online CSS compressor and optimizer](#) based on csstidy. If you want to create a linear or radial gradient as background or border, check our [CSS Gradient Generator](#).

Hey! You found this booklet interesting? Support Converting Colors with the new Membership Option!

The pro membership hides all ads, plus gives you double the colors in the color bucket, and more awesome pro features!

[Learn more, Memberships starting at \\$2.50/m!](#)

**Follow me
on Twitter!**

@ConvertingColor