

Converting Colors

Hex(491C0B)

Have a look what the booklet for
Hex(491C0B) contains.

Hex(491C0B)	3
<i>Conversions</i>	4
<i>Details</i>	6
<i>Harmonies</i>	11
<i>Previews</i>	23
<i>Color Blindness Simulation</i>	26
<i>CSS Examples</i>	29

Color

Hex(491C0B)

Conversions

Conversions Part 1

Format	Color
Hex	491C0B
RGB	73, 28, 11
RGB Percent	29%, 11%, 4%
CMY	0.7137, 0.8902, 0.9569
CMYK	0.00, 0.62, 0.85, 0.71
HSL	16°, 74%, 16%
HSV	16°, 85%, 29%
XYZ	3.2233, 2.2711, 0.5851
YIQ	39.5170, 32.2770, 4.2530

Conversions

Conversions Part 2

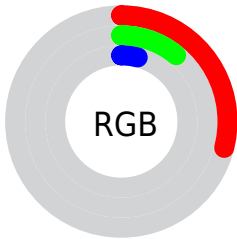
Format	Color
R_YB	73, 34, 11
Decimal	4791307
CIE Lab	16.85, 20.25, 20.68
CIE LCh	17, 28.943, 45.612
Yxy	2.2711, 0.5302, 0.3736
Android (android.graphics.Color)	4282981387 (0xFF491C0B)
YUV	39.5170, -14.0589, 29.3646
Hunter-Lab	15.0703, 11.8055, 8.2473

Details

The Hex color **491C0B** is a dark color, and the websafe version is hex **663333**. A complement of this color would be **0B3849**, and the grayscale version is **282828**.

A 20% lighter version of the original color is **7E4936**, and **100000** is the 20% darker color. If you saturate the color by 10%, you get **491704**, and if you desaturate by 10%, it is **492112**.

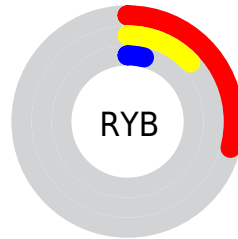
Distribution



Red (29%)

Green (11%)

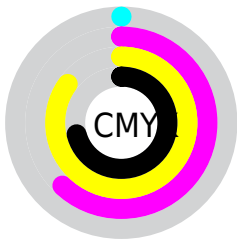
Blue (4%)



Red (29%)

Yellow (13%)

Blue (4%)

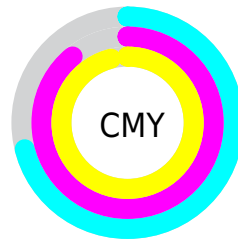


Cyan (0%)

Magenta (62%)

Yellow (85%)

Black (71%)



Cyan (71%)

Magenta (89%)

Yellow (96%)

Brightness & Saturation Gradients

These gradients show how the Hex color 491C0B changes by changing the brightness by 10 percent. The first figure shows a shift by +10% for each color and the second figure -10%.

Similar to the brightness gradients but the following saturation gradients show a change of the Hex color 491C0B by changing the saturation by 10% instead.

 491C0B

 491C0B

 FFFFEB

 300600

 7E4936

 100000

 99614D

 000000

 B57A65

 D1947F

 EFAF99

 FFCBB3

 FFE7CF

 491C0B

 491C0B

■ 491704

■ 492112

■ 491400

■ 49271A

■ 492C21

■ 493128

■ 49362F

■ 493C37

■ 49413E

■ 494645

■ 494C4D

Harmonies

Analogous

The Analogous color harmony consists of three colors that are next to each other on the color wheel.



4E1520



491C0B



3C2500

Triad

The Triadic color harmony groups three colors that are evenly spaced from another and form a triangle on the color wheel.



491C0B



00321F



122852

Complementary

The Complementary color scheme is a pair of colors which are on the opposite of each other on the color wheel.



491C0B



0B3849

Split Complementary

Split-complementary colors differ from the complementary color scheme. The scheme consists of three colors, the original color and two neighbors of the complement color.



002F52



491C0B



003334

Square

The Square scheme is like the rectangle color scheme, but the four colors are evenly spaced on the color wheel.



491C0B



113009



003247



381F47

Rectangle

The Rectangle color scheme consists of four colors that form a rectangle on the color wheel.



491C0B



312A00



003247



002B53

Sweetspot

The Sweet Spot groups the original color and five complimentary colors.



491C0B



5E4D47



490B38



302622



B0B0B0



303030

Same Dimension

The Same Dimension uses a secret algorithm to generate beautiful new colors.



491C0B



5E1A00



493B0B



242120



631B00



E33E00

Inverse Universe

The Inverse Universe completely reimagines the original color for something new.



0B3849



00445E



0B1949



202324



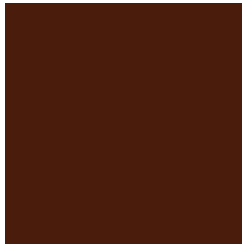
004863



00A5E3

Previews

White Background



This preview shows how the Hex color 491C0B looks on a white background.

Color Contrast Check

Large Text (above 18pt) WCAG AA ✓ Pass

Any Text WCAG AA ✓ Pass

Large Text (above 18pt) WCAG AAA ✓ Pass

Any Text WCAG AAA ✓ Pass

Black Background



Color Contrast Check

Large Text (above 18pt) WCAG AA × Fail

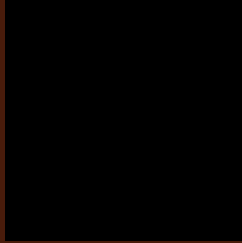
Any Text WCAG AA × Fail

Large Text (above 18pt) WCAG AAA × Fail

Any Text WCAG AAA × Fail

If you want to check with other color combinations, try the [Color Contrast Checker](#).

Hex 491C0B Background



This preview shows how black text looks on a background with the Hex color 491C0B.

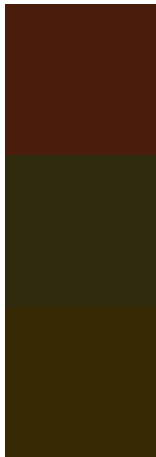


This preview shows how white text looks on a background with the Hex color 491C0B.

Color Blindness Simulation

Color vision deficiency is a very complex topic, and I could not describe the different causes any better than Wikipedia does, so if you want to learn more, you should check out their [article about color blindness](#).

Dichromacy

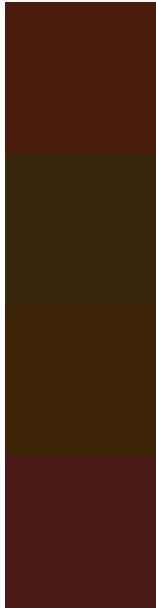


Original Color
491C0B

Protanopia
302B0F

Deuteranopia
362904

Trichromacy



Original Color
491C0B

Protanomaly
39260E

Deuteranomaly
3D2407

Tritanomaly
4A1B16

Monochromacy



Original Color
491C0B

Achromatopsia
282828

Achromatomaly
34241D

CSS Examples

Text

The CSS property to change the color of the text to Hex 491C0B is called "color". The color property can be set on classes, ids or directly on the HTML element.

This example shows how text in the color #491C0B looks like.

```
.text, #text, p{  
    color:#491C0B  
}
```

If you want to add a text shadow in that color use the text-shadow property, you can generate a text shadow directly with our [CSS Text Shadow Generator](#).

Here you see how black text with a 4 pixel #491C0B colored shadow looks like.

```
.shadow{ text-shadow: 4px 4px 2px #491C0B
}
```

Border

The CSS property to change the border of an element to Hex 491C0B is called "border". The border property can be set on classes, ids or directly on the HTML element.

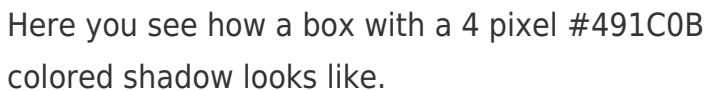
This example shows the color as border, it can be applied via the CSS property "border" or "border-color".

```
.border, #border, table{ border:4px solid
#491C0B }
```

If only the border color should be changed use the property `border-color`.

```
.border{ border-color:#491C0B }
```

If you want to add a box shadow in that color use:



Here you see how a box with a 4 pixel #491C0B colored shadow looks like.

```
.boxshadow{ -moz-box-shadow:4px 4px 4px  
4px #491C0B; -webkit-box-shadow:4px 4px  
4px 4px #491C0B; box-shadow:4px 4px 4px  
4px #491C0B }
```

Background

The CSS property to change the background color of an element to Hex 491C0B is called "background". The background property can be set on classes, ids or directly on the HTML element.

```
.background, #background, body{  
background:#491C0B }
```

If only the background color should be changed can be used:

```
.background{ background-color:#491C0B }
```

This example shows the color as background, it is applied via the CSS property "background".

To optimize and compress your CSS code, you can use our [online CSS compressor and optimizer](#) based on csstidy. If you want to create a linear or radial gradient as background or border, check our [CSS Gradient Generator](#).

Hey! You found this booklet
interesting? Support Converting
Colors with the new Membership
Option!

The pro membership hides all ads, plus gives you
double the colors in the color bucket, and more
awesome pro features!

[Learn more, Memberships starting at \\$2.50/m!](#)

**Follow me
on Twitter!**

@ConvertingColor