

Converting Colors

Hex(491E1E)

Have a look what the booklet for
Hex(491E1E) contains.

Hex(491E1E)	3
<i>Conversions</i>	4
<i>Details</i>	6
<i>Harmonies</i>	11
<i>Previews</i>	23
<i>Color Blindness Simulation</i>	26
<i>CSS Examples</i>	29

Color

Hex(491E1E)

Conversions

Conversions Part 1

Format	Color
Hex	491E1E
RGB	73, 30, 30
RGB Percent	29%, 12%, 12%
CMY	0.7137, 0.8824, 0.8824
CMYK	0.00, 0.59, 0.59, 0.71
HSL	0°, 42%, 20%
HSV	0°, 59%, 29%
XYZ	3.4463, 2.4388, 1.5174
YIQ	42.8570, 25.6280, 9.1160

Conversions

Conversions Part 2

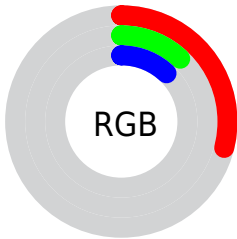
Format	Color
RYB	73, 30, 30
Decimal	4791838
CIELab	17.64, 20.49, 9.87
CIElCh	18, 22.746, 25.715
Yxy	2.4388, 0.4656, 0.3295
Android (android.graphics.Color)	4282981918 (0xFF491E1E)
YUV	42.8570, -6.3385, 26.4354
Hunter-Lab	15.6165, 12.0627, 5.1706

Details

The Hex color **491E1E** is a dark color, and the websafe version is hex **663333**. A complement of this color would be **1E4949**, and the grayscale version is **2B2B2B**.

A 20% lighter version of the original color is **7C4B4A**, and **160000** is the 20% darker color. If you saturate the color by 10%, you get **491717**, and if you desaturate by 10%, it is **492525**.

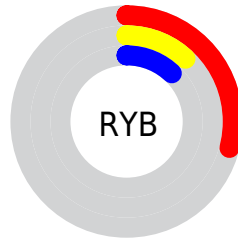
Distribution



Red (29%)

Green (12%)

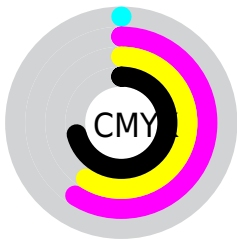
Blue (12%)



Red (29%)

Yellow (12%)

Blue (12%)

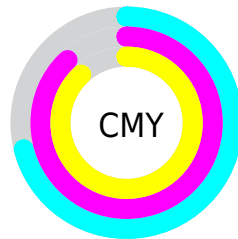


Cyan (0%)

Magenta (59%)

Yellow (59%)

Black (71%)



Cyan (71%)

Magenta (88%)

Yellow (88%)

Brightness & Saturation Gradients

These gradients show how the Hex color 491E1E changes by changing the brightness by 10 percent. The first figure shows a shift by +10% for each color and the second figure -10%.

Similar to the brightness gradients but the following saturation gradients show a change of the Hex color 491E1E by changing the saturation by 10% instead.



491E1E



491E1E

FFFFFF



310805



7C4B4A



160000



976461



000000



B37D7A



CF9794



ECB2AF



FFCDCA



FFEAE6



491E1E



491E1E

■ 491717

■ 492525

■ 490F0F

■ 492D2D

■ 490808

■ 493434

■ 490101

■ 493B3B

■ 490000

■ 494242

■ 494A4A

■ 495151

■ 495858

■ 496060

Harmonies

Analogous

The Analogous color harmony consists of three colors that are next to each other on the color wheel.



481D2E



491E1E



432310

Triad

The Triadic color harmony groups three colors that are evenly spaced from another and form a triangle on the color wheel.



491E1E



113218



002E4C

Complementary

The Complementary color scheme is a pair of colors which are on the opposite of each other on the color wheel.



491E1E



1E4949

Split Complementary

Split-complementary colors differ from the complementary color scheme. The scheme consists of three colors, the original color and two neighbors of the complement color.



003146



491E1E



003328

Square

The Square scheme is like the rectangle color scheme, but the four colors are evenly spaced on the color wheel.



491E1E



272E0B



003339



282849

Rectangle

The Rectangle color scheme consists of four colors that form a rectangle on the color wheel.



491E1E



3B2809



003339



002F4B

Sweetspot

The Sweet Spot groups the original color and five complimentary colors.



491E1E



5E4D4D



491E49



302626



B0B0B0



303030

Same Dimension

The Same Dimension uses a secret algorithm to generate beautiful new colors.



491E1E



5E1B1B



49331E



242020



630000



E30000

Inverse Universe

The Inverse Universe completely reimagines the original color for something new.



1E4949



1B5E5E



1E3349



202424



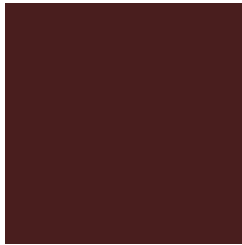
006363



00E3E3

Previews

White Background



This preview shows how the Hex color 491E1E looks on a white background.

Color Contrast Check

Large Text (above 18pt) WCAG AA ✓ Pass

Any Text WCAG AA ✓ Pass

Large Text (above 18pt) WCAG AAA ✓ Pass

Any Text WCAG AAA ✓ Pass

Black Background



Color Contrast Check

Large Text (above 18pt) WCAG AA × Fail

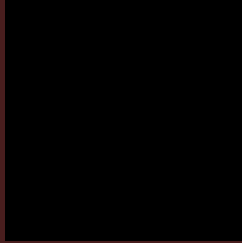
Any Text WCAG AA × Fail

Large Text (above 18pt) WCAG AAA × Fail

Any Text WCAG AAA × Fail

If you want to check with other color combinations, try the [Color Contrast Checker](#).

Hex 491E1E Background



This preview shows how black text looks on a background with the Hex color 491E1E.



This preview shows how white text looks on a background with the Hex color 491E1E.

Color Blindness Simulation

Color vision deficiency is a very complex topic, and I could not describe the different causes any better than Wikipedia does, so if you want to learn more, you should check out their [article about color blindness](#).

Dichromacy



Original Color
491E1E

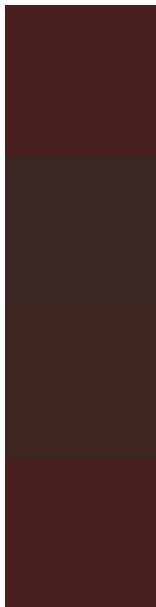
Protanopia
2F2C24

Deuteranopia
352A1C



Tritanopia
491E20

Trichromacy



Original Color

491E1E

Protanomaly

382722

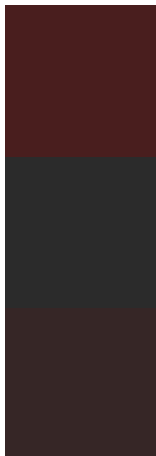
Deuteranomaly

3C261D

Tritanomaly

491E1F

Monochromacy



Original Color

491E1E

Achromatopsia

2B2B2B

Achromatomaly

362626

CSS Examples

Text

The CSS property to change the color of the text to Hex 491E1E is called "color". The color property can be set on classes, ids or directly on the HTML element.

This example shows how text in the color #491E1E looks like.

```
.text, #text, p{  
    color:#491E1E  
}
```

If you want to add a text shadow in that color use the text-shadow property, you can generate a text shadow directly with our [CSS Text Shadow Generator](#).

Here you see how black text with a 4 pixel #491E1E colored shadow looks like.

```
.shadow{ text-shadow: 4px 4px 2px #491E1E
}
```

Border

The CSS property to change the border of an element to Hex 491E1E is called "border". The border property can be set on classes, ids or directly on the HTML element.

This example shows the color as border, it can be applied via the CSS property "border" or "border-color".

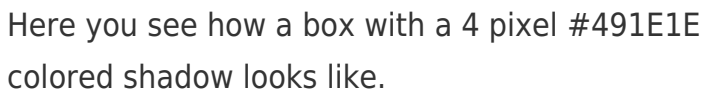
```
.border, #border, table{ border:4px solid
#491E1E }
```

If only the border color should be changed use the property `border-color`.

```
.border{ border-color:#491E1E }
```

If you want to add a box shadow in that color use:

Here you see how a box with a 4 pixel #491E1E colored shadow looks like.

A rectangular box with a dark red border and a dark red shadow. The shadow is cast to the right and bottom of the box, creating a 3D effect. The text inside the box is black and reads: "Here you see how a box with a 4 pixel #491E1E colored shadow looks like."

```
.boxshadow{ -moz-box-shadow:4px 4px 4px  
4px #491E1E; -webkit-box-shadow:4px 4px  
4px 4px #491E1E; box-shadow:4px 4px 4px  
4px #491E1E }
```

Background

The CSS property to change the background color of an element to Hex 491E1E is called "background". The background property can be set on classes, ids or directly on the HTML element.

```
.background, #background, body{  
background:#491E1E }
```

If only the background color should be changed can be used:

```
.background{ background-color:#491E1E }
```

This example shows the color as background, it is applied via the CSS property "background".

To optimize and compress your CSS code, you can use our [online CSS compressor and optimizer](#) based on csstidy. If you want to create a linear or radial gradient as background or border, check our [CSS Gradient Generator](#).

Hey! You found this booklet interesting? Support Converting Colors with the new Membership Option!

The pro membership hides all ads, plus gives you double the colors in the color bucket, and more awesome pro features!

[Learn more, Memberships starting at \\$2.50/m!](#)

**Follow me
on Twitter!**

@ConvertingColor