

# Converting Colors

Hex(4A2013)

Have a look what the booklet for  
Hex(4A2013) contains.

<b>Hex(4A2013)</b> .....	3
<i><b>Conversions</b></i> .....	4
<i><b>Details</b></i> .....	6
<i><b>Harmonies</b></i> .....	11
<i><b>Previews</b></i> .....	23
<i><b>Color Blindness Simulation</b></i> .....	26
<i><b>CSS Examples</b></i> .....	29

**Color**

**Hex(4A2013)**

# Conversions

## Conversions Part 1

<b>Format</b>	<b>Color</b>
Hex	4A2013
RGB	74, 32, 19
RGB Percent	29%, 13%, 7%
CMY	0.7098, 0.8745, 0.9255
CMYK	0.00, 0.57, 0.74, 0.71
HSL	14°, 59%, 18%
HSV	14°, 74%, 29%
XYZ	3.4581, 2.5359, 0.9233
YIQ	43.0760, 29.2050, 4.8610

# Conversions

## Conversions Part 2

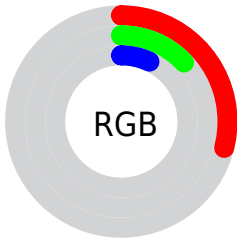
Format	Color
<b>R<sub>YB</sub></b>	74, 36, 19
Decimal	4857875
CIE <sub>Lab</sub>	18.08, 18.78, 17.97
CIE <sub>LCh</sub>	18, 25.992, 43.727
Yxy	2.5359, 0.4999, 0.3666
Android (android.graphics.Color)	4283047955 (0xFF4A2013)
YUV	43.0760, -11.8695, 27.1203
Hunter-Lab	15.9245, 10.8945, 7.7095

# Details

The Hex color **4A2013** is a dark color, and the websafe version is hex **663333**. A complement of this color would be **133D4A**, and the grayscale version is **2B2B2B**.

A 20% lighter version of the original color is **7E4D3E**, and **170000** is the 20% darker color. If you saturate the color by 10%, you get **4A1A0C**, and if you desaturate by 10%, it is **4A261A**.

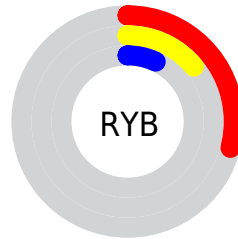
# Distribution



Red (29%)

Green (13%)

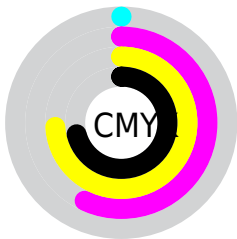
Blue (7%)



Red (29%)

Yellow (14%)

Blue (7%)

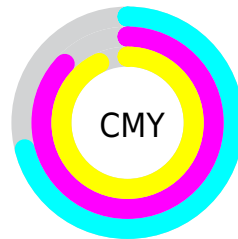


Cyan (0%)

Magenta (57%)

Yellow (74%)

Black (71%)



Cyan (71%)

Magenta (87%)

Yellow (93%)

# Brightness & Saturation Gradients

These gradients show how the Hex color 4A2013 changes by changing the brightness by 10 percent. The first figure shows a shift by +10% for each color and the second figure -10%.

Similar to the brightness gradients but the following saturation gradients show a change of the Hex color 4A2013 by changing the saturation by 10% instead.



 4A2013

 4A2013

 FFFFF4

 320B00

 7E4D3E

 170000

 996655

 000000

 B57F6D

 D19987

 EEB4A1

 FFCFBC

 FFECD8

 4A2013

 4A2013

■ 4A1A0C

■ 4A261A

■ 4A1504

■ 4A2B22

■ 4A1100

■ 4A3129

■ 4A3731

■ 4A3C38

■ 4A423F

■ 4A4847

■ 4A4D4E

■ 4A5356

# Harmonies

## Analogous

The Analogous color harmony consists of three colors that are next to each other on the color wheel.



4E1B24



4A2013



3F2703

# Triad

The Triadic color harmony groups three colors that are evenly spaced from another and form a triangle on the color wheel.



4A2013



003521



182B51

# Complementary

The Complementary color scheme is a pair of colors which are on the opposite of each other on the color wheel.



4A2013



133D4A

# Split Complementary

Split-complementary colors differ from the complementary color scheme. The scheme consists of three colors, the original color and two neighbors of the complement color.



003150



4A2013



003534

# Square

The Square scheme is like the rectangle color scheme, but the four colors are evenly spaced on the color wheel.



4A2013



19320F



003446



382347

# Rectangle

The Rectangle color scheme consists of four colors that form a rectangle on the color wheel.



4A2013



342C00



003446



022E52



# Sweetspot

The Sweet Spot groups the original color and five complimentary colors.



4A2013



61514C



4A133D



302724



B0B0B0



303030



# Same Dimension

The Same Dimension uses a secret algorithm to generate beautiful new colors.



4A2013



611F0B



4A3B13



262322



661800



E63600



# Inverse Universe

The Inverse Universe completely reimagines the original color for something new.



133D4A



0B4D61



13224A



222526



004E66

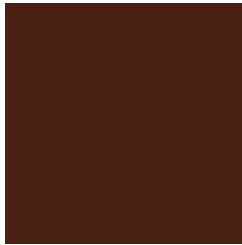


00AFE6



# Previews

## White Background



This preview shows how the Hex color 4A2013 looks on a white background.

## Color Contrast Check

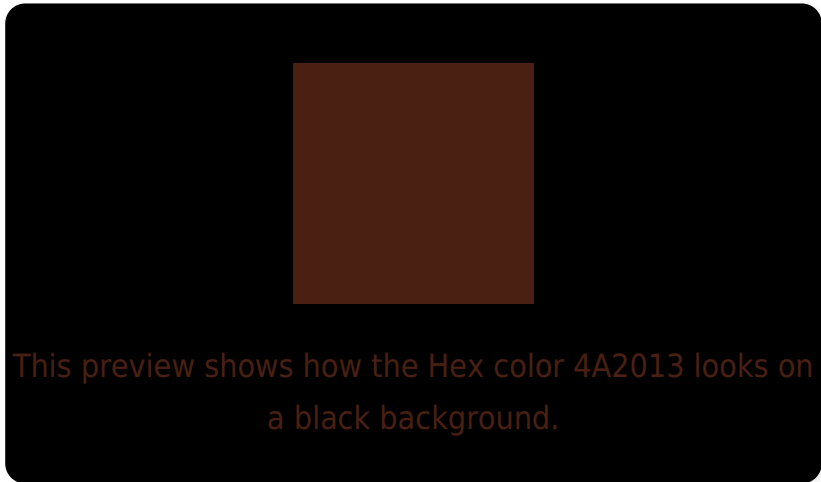
Large Text (above 18pt) WCAG AA ✓ Pass

Any Text WCAG AA ✓ Pass

Large Text (above 18pt) WCAG AAA ✓ Pass

Any Text WCAG AAA ✓ Pass

# Black Background



## Color Contrast Check

Large Text (above 18pt) WCAG AA × Fail

Any Text WCAG AA × Fail

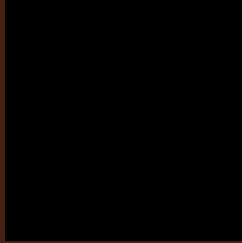
Large Text (above 18pt) WCAG AAA × Fail

Any Text WCAG AAA × Fail

If you want to check with other color combinations, try the [Color Contrast Checker](#).



## Hex 4A2013 Background



This preview shows how black text looks on a background with the Hex color 4A2013.

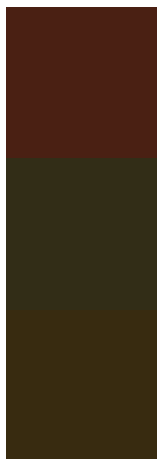


This preview shows how white text looks on a background with the Hex color 4A2013.

# Color Blindness Simulation

Color vision deficiency is a very complex topic, and I could not describe the different causes any better than Wikipedia does, so if you want to learn more, you should check out their [article about color blindness](#).

## Dichromacy



**Original Color**  
4A2013

**Protanopia**  
322D17

**Deuteranopia**  
382B10



**Tritanopia**  
4B1E20

# Trichromacy



**Original Color**  
4A2013

**Protanomaly**  
3B2816

**Deuteranomaly**  
3F2711

**Tritanomaly**  
4B1F1B

# Monochromacy



**Original Color**  
4A2013

**Achromatopsia**  
2B2B2B

**Achromatomaly**  
362722

# CSS Examples

## Text

The CSS property to change the color of the text to Hex 4A2013 is called "color". The color property can be set on classes, ids or directly on the HTML element.

This example shows how text in the color #4A2013 looks like.

```
.text, #text, p{  
    color:#4A2013  
}
```

If you want to add a text shadow in that color use the text-shadow property, you can generate a text shadow directly with our [CSS Text Shadow Generator](#).

Here you see how black text with a 4 pixel #4A2013 colored shadow looks like.

```
.shadow{ text-shadow: 4px 4px 2px #4A2013
}
```

## Border

The CSS property to change the border of an element to Hex 4A2013 is called "border". The border property can be set on classes, ids or directly on the HTML element.

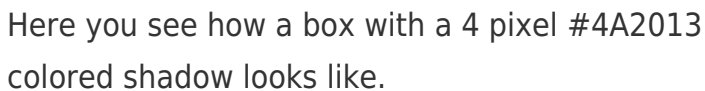
This example shows the color as border, it can be applied via the CSS property "border" or "border-color".

```
.border, #border, table{ border:4px solid
#4A2013 }
```

If only the border color should be changed use the property `border-color`.

```
.border{ border-color:#4A2013 }
```

If you want to add a box shadow in that color use:



Here you see how a box with a 4 pixel #4A2013 colored shadow looks like.

```
.boxshadow{ -moz-box-shadow:4px 4px 4px  
4px #4A2013; -webkit-box-shadow:4px 4px  
4px 4px #4A2013; box-shadow:4px 4px 4px  
4px #4A2013 }
```

# Background

The CSS property to change the background color of an element to Hex 4A2013 is called "background". The background property can be set on classes, ids or directly on the HTML element.

```
.background, #background, body{  
background:#4A2013 }
```

If only the background color should be changed can be used:

```
.background{ background-color:#4A2013 }
```

This example shows the color as background, it is applied via the CSS property "background".

To optimize and compress your CSS code, you can use our [online CSS compressor and optimizer](#) based on csstidy. If you want to create a linear or radial gradient as background or border, check our [CSS Gradient Generator](#).



Hey! You found this booklet  
interesting? Support Converting  
Colors with the new Membership  
Option!

The pro membership hides all ads, plus gives you  
double the colors in the color bucket, and more  
awesome pro features!

**[Learn more, Memberships starting at \\$2.50/m!](#)**

**Follow me  
on Twitter!**

@ConvertingColor