

Converting Colors

Hex(4A2D22)

Have a look what the booklet for
Hex(4A2D22) contains.

Hex(4A2D22)	3
<i>Conversions</i>	4
<i>Details</i>	6
<i>Harmonies</i>	11
<i>Previews</i>	23
<i>Color Blindness Simulation</i>	26
<i>CSS Examples</i>	29

Color

Hex(4A2D22)

Conversions

Conversions Part 1

Format	Color
Hex	4A2D22
RGB	74, 45, 34
RGB Percent	29%, 18%, 13%
CMY	0.7098, 0.8235, 0.8667
CMYK	0.00, 0.39, 0.54, 0.71
HSL	16°, 37%, 21%
HSV	16°, 54%, 29%
XYZ	4.0512, 3.4481, 1.9654
YIQ	52.4170, 20.8150, 2.7270

Conversions

Conversions Part 2

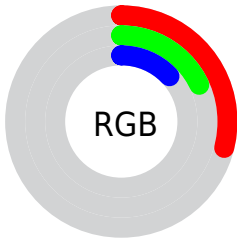
Format	Color
R_{YB}	74, 49, 34
Decimal	4861218
CIE _{Lab}	21.76, 11.92, 12.63
CIE _{LCh}	22, 17.365, 46.674
Yxy	3.4481, 0.4280, 0.3643
Android (android.graphics.Color)	4283051298 (0xFF4A2D22)
YUV	52.4170, -9.0796, 18.9283
Hunter-Lab	18.5691, 6.4469, 6.7229

Details

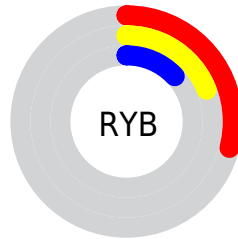
The Hex color **4A2D22** is a dark color, and the websafe version is hex **663333**. A complement of this color would be **223F4A**, and the grayscale version is **343434**.

A 20% lighter version of the original color is **7C5B4E**, and **1D0000** is the 20% darker color. If you saturate the color by 10%, you get **4A281B**, and if you desaturate by 10%, it is **4A3229**.

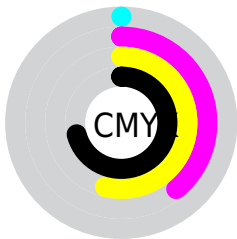
Distribution



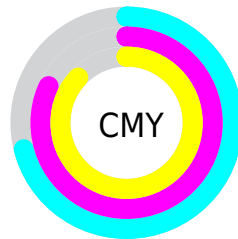
- Red (29%)
- Green (18%)
- Blue (13%)



- Red (29%)
- Yellow (19%)
- Blue (13%)



- Cyan (0%)
- Magenta (39%)
- Yellow (54%)
- Black (71%)



- Cyan (71%)
- Magenta (82%)
- Yellow (87%)

Brightness & Saturation Gradients

These gradients show how the Hex color 4A2D22 changes by changing the brightness by 10 percent. The first figure shows a shift by +10% for each color and the second figure -10%.

Similar to the brightness gradients but the following saturation gradients show a change of the Hex color 4A2D22 by changing the saturation by 10% instead.



4A2D22



4A2D22

FFFFFF



32180C



7C5B4E



1D0000



977466



000000



B28D7F



CEA899



EBC3B4



FFDFD0



FFFBE0



4A2D22



4A2D22

■ 4A281B

■ 4A3229

■ 4A2213

■ 4A3831

■ 4A1D0C

■ 4A3D38

■ 4A1804

■ 4A4240

■ 4A1400

■ 4A4847

■ 4A4D4E

■ 4A5356

■ 4A585D

■ 4A5D65

Harmonies

Analogous

The Analogous color harmony consists of three colors that are next to each other on the color wheel.



4D2A2D



4A2D22



41311B

Triad

The Triadic color harmony groups three colors that are evenly spaced from another and form a triangle on the color wheel.



4A2D22



163B2E



2D334D

Complementary

The Complementary color scheme is a pair of colors which are on the opposite of each other on the color wheel.



4A2D22



223F4A

Split Complementary

Split-complementary colors differ from the complementary color scheme. The scheme consists of three colors, the original color and two neighbors of the complement color.



16374D



4A2D22



023B3B

Square

The Square scheme is like the rectangle color scheme, but the four colors are evenly spaced on the color wheel.



4A2D22



273922



003A46



3E2E46

Rectangle

The Rectangle color scheme consists of four colors that form a rectangle on the color wheel.



4A2D22



3A341A



003A46



26344D

Sweetspot

The Sweet Spot groups the original color and five complimentary colors.



4A2D22



615651



4A223F



302A27



B0B0B0



303030

Same Dimension

The Same Dimension uses a secret algorithm to generate beautiful new colors.



4A2D22



613322



4A4122



262322



661C00



E63F00

Inverse Universe

The Inverse Universe completely reimagines the original color for something new.



223F4A



225061



222B4A



222526



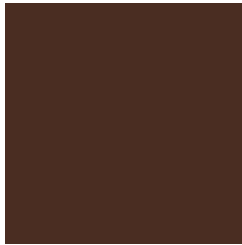
004A66



00A6E6

Previews

White Background



This preview shows how the Hex color 4A2D22 looks on a white background.

Color Contrast Check

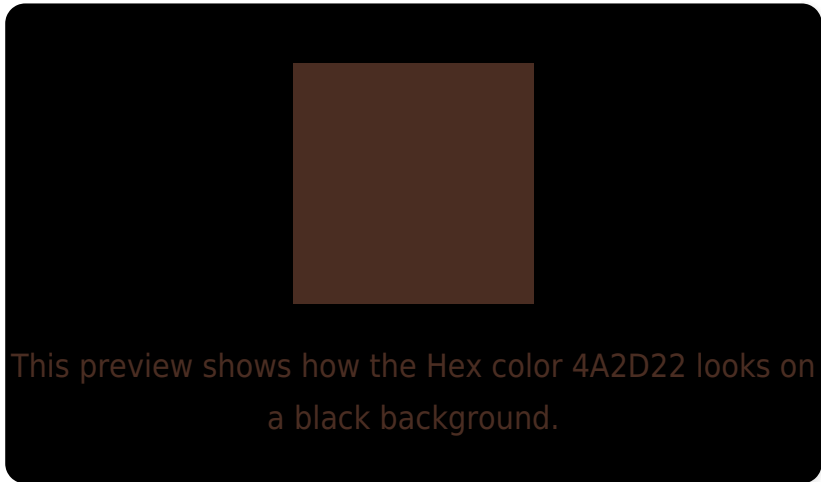
Large Text (above 18pt) WCAG AA ✓ Pass

Any Text WCAG AA ✓ Pass

Large Text (above 18pt) WCAG AAA ✓ Pass

Any Text WCAG AAA ✓ Pass

Black Background



Color Contrast Check

Large Text (above 18pt) WCAG AA × Fail

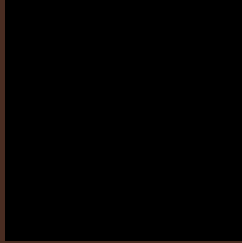
Any Text WCAG AA × Fail

Large Text (above 18pt) WCAG AAA × Fail

Any Text WCAG AAA × Fail

If you want to check with other color combinations, try the [Color Contrast Checker](#).

Hex 4A2D22 Background



This preview shows how black text looks on a background with the Hex color 4A2D22.



This preview shows how white text looks on a background with the Hex color 4A2D22.

Color Blindness Simulation

Color vision deficiency is a very complex topic, and I could not describe the different causes any better than Wikipedia does, so if you want to learn more, you should check out their [article about color blindness](#).

Dichromacy



Original Color
4A2D22

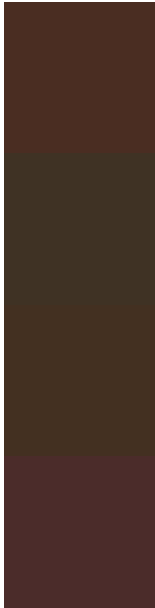
Protanopia
393525

Deuteranopia
3F3221



Tritanopia
4B2B2F

Trichromacy



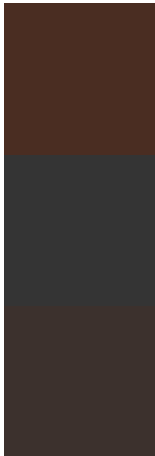
Original Color
4A2D22

Protanomaly
3F3224

Deuteranomaly
433021

Tritanomaly
4B2C2A

Monochromacy



Original Color
4A2D22

Achromatopsia
343434

Achromatomaly
3C312D

CSS Examples

Text

The CSS property to change the color of the text to Hex 4A2D22 is called "color". The color property can be set on classes, ids or directly on the HTML element.

This example shows how text in the color #4A2D22 looks like.

```
.text, #text, p{  
    color:#4A2D22  
}
```

If you want to add a text shadow in that color use the text-shadow property, you can generate a text shadow directly with our [CSS Text Shadow Generator](#).

Here you see how black text with a 4 pixel #4A2D22 colored shadow looks like.

```
.shadow{ text-shadow: 4px 4px 2px #4A2D22 }  
}
```

Border

The CSS property to change the border of an element to Hex 4A2D22 is called "border". The border property can be set on classes, ids or directly on the HTML element.

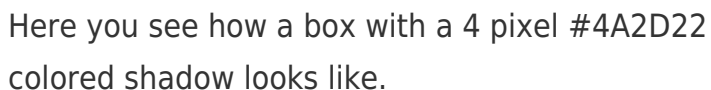
This example shows the color as border, it can be applied via the CSS property "border" or "border-color".

```
.border, #border, table{ border:4px solid #4A2D22 }  
}
```

If only the border color should be changed use the property `border-color`.

```
.border{ border-color:#4A2D22 }
```

If you want to add a box shadow in that color use:



Here you see how a box with a 4 pixel #4A2D22 colored shadow looks like.

```
.boxshadow{ -moz-box-shadow:4px 4px 4px  
4px #4A2D22; -webkit-box-shadow:4px 4px  
4px 4px #4A2D22; box-shadow:4px 4px 4px  
4px #4A2D22 }
```

Background

The CSS property to change the background color of an element to Hex 4A2D22 is called "background". The background property can be set on classes, ids or directly on the HTML element.

```
.background, #background, body{  
background:#4A2D22 }
```

If only the background color should be changed can be used:

```
.background{ background-color:#4A2D22 }
```

This example shows the color as background, it is applied via the CSS property "background".

To optimize and compress your CSS code, you can use our [online CSS compressor and optimizer](#) based on csstidy. If you want to create a linear or radial gradient as background or border, check our [CSS Gradient Generator](#).

Hey! You found this booklet interesting? Support Converting Colors with the new Membership Option!

The pro membership hides all ads, plus gives you double the colors in the color bucket, and more awesome pro features!

[Learn more, Memberships starting at \\$2.50/m!](#)

**Follow me
on Twitter!**

@ConvertingColor