

# Converting Colors

Hex(4A2D31)

Have a look what the booklet for  
Hex(4A2D31) contains.

<b>Hex(4A2D31)</b> .....	3
<b><i>Conversions</i></b> .....	4
<b><i>Details</i></b> .....	6
<b><i>Harmonies</i></b> .....	11
<b><i>Previews</i></b> .....	23
<b><i>Color Blindness Simulation</i></b> .....	26
<b><i>CSS Examples</i></b> .....	29

# Color

**Hex(4A2D31)**

# Conversions

## Conversions Part 1

Format	Color
Hex	4A2D31
RGB	74, 45, 49
RGB Percent	29%, 18%, 19%
CMY	0.7098, 0.8235, 0.8078
CMYK	0.00, 0.39, 0.34, 0.71
HSL	352°, 24%, 23%
HSV	352°, 39%, 29%
XYZ	4.3168, 3.5544, 3.3643
YIQ	54.1270, 16.0000, 7.3920

# Conversions

## Conversions Part 2

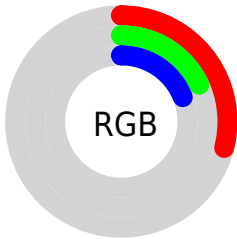
<b>Format</b>	<b>Color</b>
<b>R<sub>YB</sub></b>	74, 45, 49
Decimal	4861233
CIE Lab	22.14, 14.00, 3.00
CIE LCh	22, 14.315, 12.096
Yxy	3.5544, 0.3842, 0.3164
Android (android.graphics.Color)	4283051313 (0xFF4A2D31)
YUV	54.1270, -2.5276, 17.4286
Hunter-Lab	18.8530, 7.8786, 2.6170

# Details

The Hex color **4A2D31** is a dark color, and the websafe version is hex **663333**. A complement of this color would be **2D4A46**, and the grayscale version is **363636**.

A 20% lighter version of the original color is **7C5B5F**, and **200001** is the 20% darker color. If you saturate the color by 10%, you get **4A262B**, and if you desaturate by 10%, it is **4A3437**.

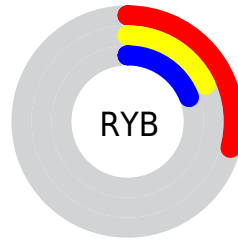
# Distribution



Red (29%)

Green (18%)

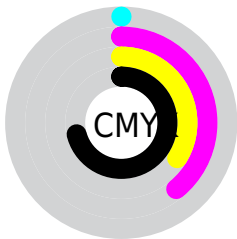
Blue (19%)



Red (29%)

Yellow (18%)

Blue (19%)

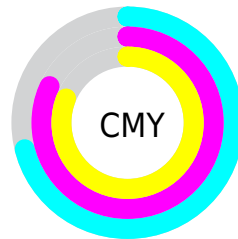


Cyan (0%)

Magenta (39%)

Yellow (34%)

Black (71%)



Cyan (71%)

Magenta (82%)

Yellow (81%)

# Brightness & Saturation Gradients

These gradients show how the Hex color 4A2D31 changes by changing the brightness by 10 percent. The first figure shows a shift by +10% for each color and the second figure -10%.

Similar to the brightness gradients but the following saturation gradients show a change of the Hex color 4A2D31 by changing the saturation by 10% instead.



■ 4A2D31

■ 4A2D31

FFFFFF

■ 33181C

■ 7C5B5F

■ 200001

■ 967478

■ 000000

■ B18D91

■ CDA8AC

■ E9C3C7

■ FFD FE3

■ FF CFF

■ 4A2D31

■ 4A2D31

■ 4A262B

■ 4A3437

■ 4A1E24

■ 4A3C3E

■ 4A171E

■ 4A4344

■ 4A0F17

■ 4A4B4B

■ 4A0811

■ 4A5251

■ 4A010B

■ 4A5957

■ 4A000A

■ 4A615E

■ 4A6864

■ 4A706A

# Harmonies

## Analogous

The Analogous color harmony consists of three colors that are next to each other on the color wheel.



462E3C



4A2D31



482F27

# Triad

The Triadic color harmony groups three colors that are evenly spaced from another and form a triangle on the color wheel.



4A2D31



2C3925



1D3849

# Complementary

The Complementary color scheme is a pair of colors which are on the opposite of each other on the color wheel.



4A2D31



2D4A46

# Split Complementary

Split-complementary colors differ from the complementary color scheme. The scheme consists of three colors, the original color and two neighbors of the complement color.



123A43



4A2D31



203A2E

# Square

The Square scheme is like the rectangle color scheme, but the four colors are evenly spaced on the color wheel.



4A2D31



383620



143B39



2D354A

# Rectangle

The Rectangle color scheme consists of four colors that form a rectangle on the color wheel.



4A2D31



443123



143B39



183947



# Sweetspot

The Sweet Spot groups the original color and five complimentary colors.



4A2D31



615557



462D4A



302A2B



B0B0B0



303030



# Same Dimension

The Same Dimension uses a secret algorithm to generate beautiful new colors.



4A2D31



61333A



4A372D



262223



66000E



E60020



# Inverse Universe

The Inverse Universe completely reimagines the original color for something new.



4A2D31



61333A



2D404A



262223



66000E

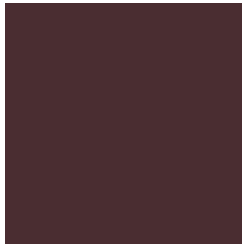


E60020



# Previews

## White Background



This preview shows how the Hex color 4A2D31 looks on a white background.

## Color Contrast Check

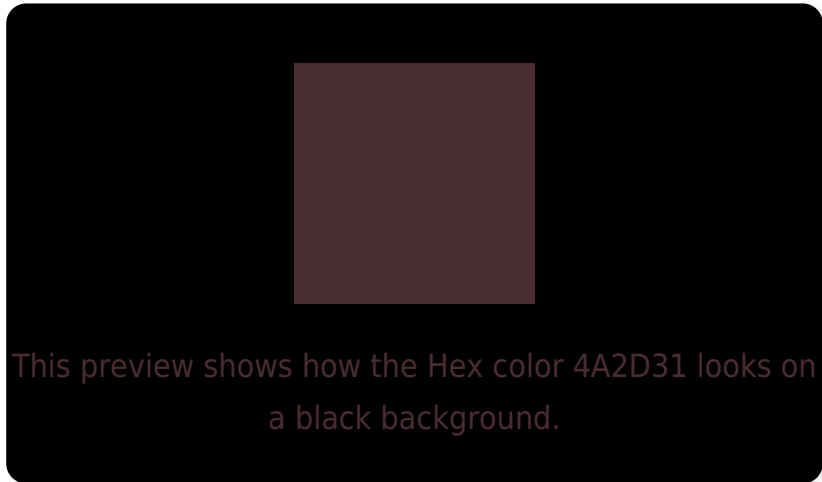
Large Text (above 18pt) WCAG AA ✓ Pass

Any Text WCAG AA ✓ Pass

Large Text (above 18pt) WCAG AAA ✓ Pass

Any Text WCAG AAA ✓ Pass

# Black Background



## Color Contrast Check

Large Text (above 18pt) WCAG AA × Fail

Any Text WCAG AA × Fail

Large Text (above 18pt) WCAG AAA × Fail

Any Text WCAG AAA × Fail

If you want to check with other color combinations, try the [Color Contrast Checker](#).



## Hex 4A2D31 Background



This preview shows how black text looks on a background with the Hex color 4A2D31.

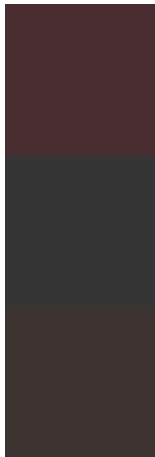


This preview shows how white text looks on a background with the Hex color 4A2D31.

# Color Blindness Simulation

Color vision deficiency is a very complex topic, and I could not describe the different causes any better than Wikipedia does, so if you want to learn more, you should check out their [article about color blindness](#).

## Dichromacy



**Original Color**  
4A2D31

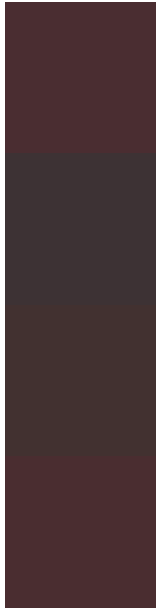
**Protanopia**  
363535

**Deuteranopia**  
3D3330



**Tritanopia**  
4A2D30

# Trichromacy



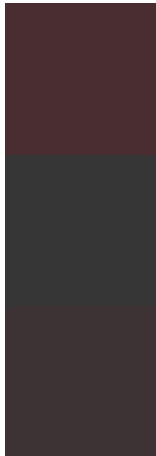
**Original Color**  
4A2D31

**Protanomaly**  
3D3234

**Deuteranomaly**  
423130

**Tritanomaly**  
4A2D30

# Monochromacy



**Original Color**  
4A2D31

**Achromatopsia**  
363636

**Achromatomaly**  
3D3334

# CSS Examples

## Text

The CSS property to change the color of the text to Hex 4A2D31 is called "color". The color property can be set on classes, ids or directly on the HTML element.

This example shows how text in the color #4A2D31 looks like.

```
.text, #text, p{  
    color:#4A2D31  
}
```

If you want to add a text shadow in that color use the text-shadow property, you can generate a text shadow directly with our [CSS Text Shadow Generator](#).

Here you see how black text with a 4 pixel #4A2D31 colored shadow looks like.

```
.shadow{ text-shadow: 4px 4px 2px #4A2D31
}
```

## Border

The CSS property to change the border of an element to Hex 4A2D31 is called "border". The border property can be set on classes, ids or directly on the HTML element.

This example shows the color as border, it can be applied via the CSS property "border" or "border-color".

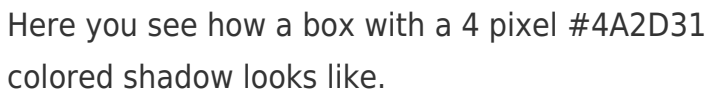
```
.border, #border, table{ border:4px solid
#4A2D31 }
```

If only the border color should be changed use the property `border-color`.

```
.border{ border-color:#4A2D31 }
```

If you want to add a box shadow in that color use:

Here you see how a box with a 4 pixel #4A2D31 colored shadow looks like.



```
.boxshadow{ -moz-box-shadow:4px 4px 4px  
4px #4A2D31; -webkit-box-shadow:4px 4px  
4px 4px #4A2D31; box-shadow:4px 4px 4px  
4px #4A2D31 }
```

# Background

The CSS property to change the background color of an element to Hex 4A2D31 is called "background". The background property can be set on classes, ids or directly on the HTML element.

```
.background, #background, body{  
background:#4A2D31 }
```

If only the background color should be changed can be used:

```
.background{ background-color:#4A2D31 }
```

This example shows the color as background, it is applied via the CSS property "background".

To optimize and compress your CSS code, you can use our [online CSS compressor and optimizer](#) based on csstidy. If you want to create a linear or radial gradient as background or border, check our [CSS Gradient Generator](#).



Hey! You found this booklet interesting? Support Converting Colors with the new Membership Option!

The pro membership hides all ads, plus gives you double the colors in the color bucket, and more awesome pro features!

**[Learn more, Memberships starting at \\$2.50/m!](#)**

**Follow me  
on Twitter!**

@ConvertingColor