

Converting Colors

Hex(4B1A12)

Have a look what the booklet for
Hex(4B1A12) contains.

Hex(4B1A12)	3
<i>Conversions</i>	4
<i>Details</i>	6
<i>Harmonies</i>	11
<i>Previews</i>	23
<i>Color Blindness Simulation</i>	26
<i>CSS Examples</i>	29

Color

Hex(4B1A12)

Conversions

Conversions Part 1

Format	Color
Hex	4B1A12
RGB	75, 26, 18
RGB Percent	29%, 10%, 7%
CMY	0.7059, 0.8980, 0.9294
CMYK	0.00, 0.65, 0.76, 0.71
HSL	8°, 61%, 18%
HSV	8°, 76%, 29%
XYZ	3.3802, 2.2783, 0.8339
YIQ	39.7390, 31.7720, 7.9000

Conversions

Conversions Part 2

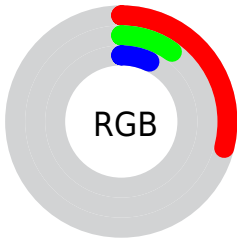
Format	Color
RYB	75, 27, 18
Decimal	4921874
CIELab	16.88, 22.68, 17.18
CIElCh	17, 28.456, 37.149
Yxy	2.2783, 0.5206, 0.3509
Android (android.graphics.Color)	4283111954 (0xFF4B1A12)
YUV	39.7390, -10.7173, 30.9239
Hunter-Lab	15.0941, 13.5593, 7.2904

Details

The Hex color **4B1A12** is a dark color, and the websafe version is hex **330000**. A complement of this color would be **12434B**, and the grayscale version is **282828**.

A 20% lighter version of the original color is **80483C**, and **150000** is the 20% darker color. If you saturate the color by 10%, you get **4B140B**, and if you desaturate by 10%, it is **4B2019**.

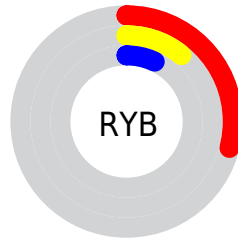
Distribution



Red (29%)

Green (10%)

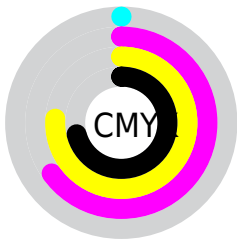
Blue (7%)



Red (29%)

Yellow (11%)

Blue (7%)

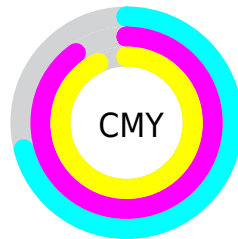


Cyan (0%)

Magenta (65%)

Yellow (76%)

Black (71%)



Cyan (71%)

Magenta (90%)

Yellow (93%)

Brightness & Saturation Gradients

These gradients show how the Hex color 4B1A12 changes by changing the brightness by 10 percent. The first figure shows a shift by +10% for each color and the second figure -10%.

Similar to the brightness gradients but the following saturation gradients show a change of the Hex color 4B1A12 by changing the saturation by 10% instead.

 4B1A12

 4B1A12

 FFFFF2

 320400

 80483C

 150000

 9B6053

 000000

 B7796C

 D49385

 F1AE9F

 FFC9BA

 FFE5D6

 4B1A12

 4B1A12

■ 4B140B

■ 4B2019

■ 4B0D03

■ 4B2721

■ 4B0B00

■ 4B2D29

■ 4B3430

■ 4B3A38

■ 4B413F

■ 4B4747

■ 4B4E4E

■ 4B5456

Harmonies

Analogous

The Analogous color harmony consists of three colors that are next to each other on the color wheel.



4E1526



4B1A12



402300

Triad

The Triadic color harmony groups three colors that are evenly spaced from another and form a triangle on the color wheel.



4B1A12



003219



002A52

Complementary

The Complementary color scheme is a pair of colors which are on the opposite of each other on the color wheel.



4B1A12



12434B

Split Complementary

Split-complementary colors differ from the complementary color scheme. The scheme consists of three colors, the original color and two neighbors of the complement color.



00304F



4B1A12



00332E

Square

The Square scheme is like the rectangle color scheme, but the four colors are evenly spaced on the color wheel.



4B1A12



1A2F03



003342



30224A

Rectangle

The Rectangle color scheme consists of four colors that form a rectangle on the color wheel.



4B1A12



362800



003342



002D52

Sweetspot

The Sweet Spot groups the original color and five complimentary colors.



4B1A12



614E4B



4B1243



302523



B0B0B0



303030

Same Dimension

The Same Dimension uses a secret algorithm to generate beautiful new colors.



4B1A12



611509



4B3612



262322



660E00



E62000

Inverse Universe

The Inverse Universe completely reimagines the original color for something new.



12434B



095561



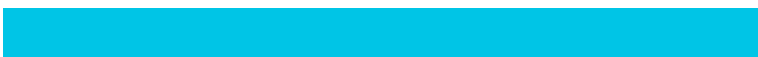
12274B



222626



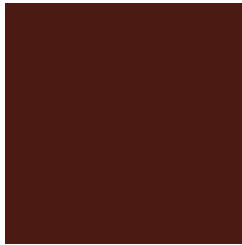
005866



00C5E6

Previews

White Background



This preview shows how the Hex color 4B1A12 looks on a white background.

Color Contrast Check

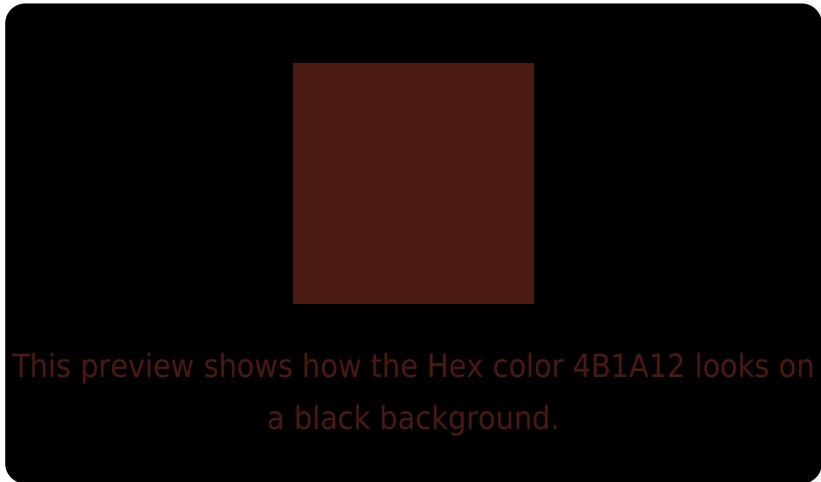
Large Text (above 18pt) WCAG AA ✓ Pass

Any Text WCAG AA ✓ Pass

Large Text (above 18pt) WCAG AAA ✓ Pass

Any Text WCAG AAA ✓ Pass

Black Background



Color Contrast Check

Large Text (above 18pt) WCAG AA × Fail

Any Text WCAG AA × Fail

Large Text (above 18pt) WCAG AAA × Fail

Any Text WCAG AAA × Fail

If you want to check with other color combinations, try the [Color Contrast Checker](#).

Hex 4B1A12 Background



This preview shows how black text looks on a background with the Hex color 4B1A12.

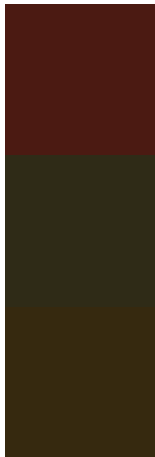


This preview shows how white text looks on a background with the Hex color 4B1A12.

Color Blindness Simulation

Color vision deficiency is a very complex topic, and I could not describe the different causes any better than Wikipedia does, so if you want to learn more, you should check out their [article about color blindness](#).

Dichromacy



Original Color
4B1A12

Protanopia
2F2B17

Deuteranopia
36290F



Tritanopia
4B191A

Trichromacy



Original Color

4B1A12

Protanomaly

392515

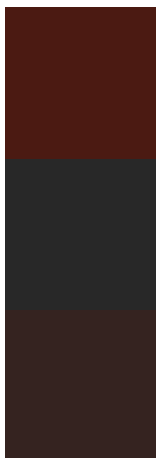
Deuteranomaly

3E2410

Tritanomaly

4B1917

Monochromacy



Original Color

4B1A12

Achromatopsia

282828

Achromatomaly

352320

CSS Examples

Text

The CSS property to change the color of the text to Hex 4B1A12 is called "color". The color property can be set on classes, ids or directly on the HTML element.

This example shows how text in the color #4B1A12 looks like.

```
.text, #text, p{  
    color:#4B1A12  
}
```

If you want to add a text shadow in that color use the text-shadow property, you can generate a text shadow directly with our [CSS Text Shadow Generator](#).

Here you see how black text with a 4 pixel #4B1A12 colored shadow looks like.

```
.shadow{ text-shadow: 4px 4px 2px #4B1A12
}
```

Border

The CSS property to change the border of an element to Hex 4B1A12 is called "border". The border property can be set on classes, ids or directly on the HTML element.

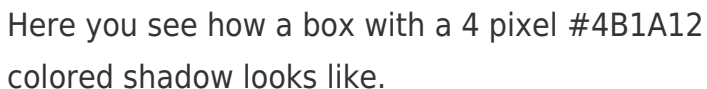
This example shows the color as border, it can be applied via the CSS property "border" or "border-color".

```
.border, #border, table{ border:4px solid
#4B1A12 }
```

If only the border color should be changed use the property `border-color`.

```
.border{ border-color:#4B1A12 }
```

If you want to add a box shadow in that color use:



Here you see how a box with a 4 pixel #4B1A12 colored shadow looks like.

```
.boxshadow{ -moz-box-shadow:4px 4px 4px  
4px #4B1A12; -webkit-box-shadow:4px 4px  
4px 4px #4B1A12; box-shadow:4px 4px 4px  
4px #4B1A12 }
```

Background

The CSS property to change the background color of an element to Hex 4B1A12 is called "background". The background property can be set on classes, ids or directly on the HTML element.

```
.background, #background, body{  
background:#4B1A12 }
```

If only the background color should be changed can be used:

```
.background{ background-color:#4B1A12 }
```

This example shows the color as background, it is applied via the CSS property "background".

To optimize and compress your CSS code, you can use our [online CSS compressor and optimizer](#) based on csstidy. If you want to create a linear or radial gradient as background or border, check our [CSS Gradient Generator](#).

Hey! You found this booklet interesting? Support Converting Colors with the new Membership Option!

The pro membership hides all ads, plus gives you double the colors in the color bucket, and more awesome pro features!

[Learn more, Memberships starting at \\$2.50/m!](#)

**Follow me
on Twitter!**

@ConvertingColor