

Converting Colors

Hex(4B1E14)

Have a look what the booklet for
Hex(4B1E14) contains.

Hex(4B1E14)	3
<i>Conversions</i>	4
<i>Details</i>	6
<i>Harmonies</i>	11
<i>Previews</i>	23
<i>Color Blindness Simulation</i>	26
<i>CSS Examples</i>	29

Color

Hex(4B1E14)

Conversions

Conversions Part 1

Format	Color
Hex	4B1E14
RGB	75, 30, 20
RGB Percent	29%, 12%, 8%
CMY	0.7059, 0.8824, 0.9216
CMYK	0.00, 0.60, 0.73, 0.71
HSL	11°, 58%, 19%
HSV	11°, 73%, 29%
XYZ	3.4922, 2.4749, 0.9555
YIQ	42.3150, 30.0300, 6.4300

Conversions

Conversions Part 2

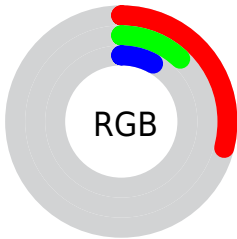
Format	Color
R_{YB}	75, 32, 20
Decimal	4922900
CIE _{Lab}	17.80, 20.51, 17.03
CIE _{LCh}	18, 26.661, 39.703
Yxy	2.4749, 0.5045, 0.3575
Android (android.graphics.Color)	4283112980 (0xFF4B1E14)
YUV	42.3150, -11.0013, 28.6647
Hunter-Lab	15.7318, 12.0931, 7.4113

Details

The Hex color **4B1E14** is a dark color, and the websafe version is hex **663333**. A complement of this color would be **14414B**, and the grayscale version is **2A2A2A**.

A 20% lighter version of the original color is **7F4B3F**, and **170000** is the 20% darker color. If you saturate the color by 10%, you get **4B180C**, and if you desaturate by 10%, it is **4B241B**.

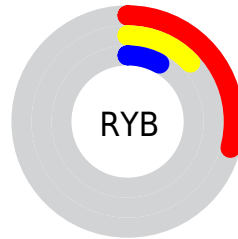
Distribution



Red (29%)

Green (12%)

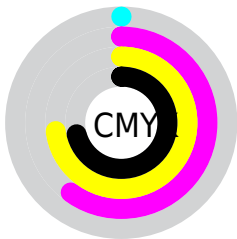
Blue (8%)



Red (29%)

Yellow (13%)

Blue (8%)

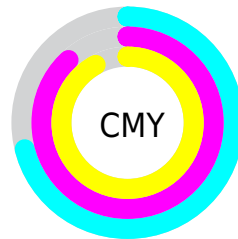


Cyan (0%)

Magenta (60%)

Yellow (73%)

Black (71%)



Cyan (71%)

Magenta (88%)

Yellow (92%)

Brightness & Saturation Gradients

These gradients show how the Hex color 4B1E14 changes by changing the brightness by 10 percent. The first figure shows a shift by +10% for each color and the second figure -10%.

Similar to the brightness gradients but the following saturation gradients show a change of the Hex color 4B1E14 by changing the saturation by 10% instead.

 4B1E14

 4B1E14

 FFFFF5

 330800

 7F4B3F

 170000

 9B6456

 000000

 B67D6E

 D39788

 F0B2A2

 FFCDBD

 FFEAD9

 4B1E14

 4B1E14

■ 4B180C

■ 4B241B

■ 4B1205

■ 4B2A23

■ 4B0E00

■ 4B302B

■ 4B3732

■ 4B3D3A

■ 4B4341

■ 4B4949

■ 4B4F50

■ 4B5557

Harmonies

Analogous

The Analogous color harmony consists of three colors that are next to each other on the color wheel.



4E1926



4B1E14



402602

Triad

The Triadic color harmony groups three colors that are evenly spaced from another and form a triangle on the color wheel.



4B1E14



00341E



0E2C52

Complementary

The Complementary color scheme is a pair of colors which are on the opposite of each other on the color wheel.



4B1E14



14414B

Split Complementary

Split-complementary colors differ from the complementary color scheme. The scheme consists of three colors, the original color and two neighbors of the complement color.



00314F



4B1E14



003531

Square

The Square scheme is like the rectangle color scheme, but the four colors are evenly spaced on the color wheel.



4B1E14



1B310B



003444



342449

Rectangle

The Rectangle color scheme consists of four colors that form a rectangle on the color wheel.



4B1E14



362B00



003444



002E52

Sweetspot

The Sweet Spot groups the original color and five complimentary colors.



4B1E14



614F4C



4B1442



302624



B0B0B0



303030

Same Dimension

The Same Dimension uses a secret algorithm to generate beautiful new colors.



4B1E14



611B0C



4B3914



262322



661300



E62A00

Inverse Universe

The Inverse Universe completely reimagines the original color for something new.



14414B



0C5161



14264B



222626



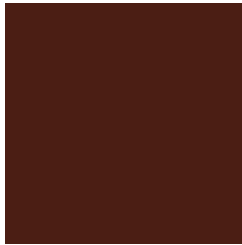
005366



00BCE6

Previews

White Background



This preview shows how the Hex color 4B1E14 looks on a white background.

Color Contrast Check

Large Text (above 18pt) WCAG AA ✓ Pass

Any Text WCAG AA ✓ Pass

Large Text (above 18pt) WCAG AAA ✓ Pass

Any Text WCAG AAA ✓ Pass

Black Background



Color Contrast Check

Large Text (above 18pt) WCAG AA × Fail

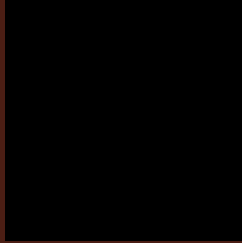
Any Text WCAG AA × Fail

Large Text (above 18pt) WCAG AAA × Fail

Any Text WCAG AAA × Fail

If you want to check with other color combinations, try the [Color Contrast Checker](#).

Hex 4B1E14 Background



This preview shows how black text looks on a background with the Hex color 4B1E14.

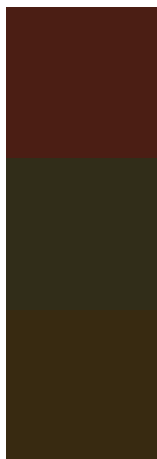


This preview shows how white text looks on a background with the Hex color 4B1E14.

Color Blindness Simulation

Color vision deficiency is a very complex topic, and I could not describe the different causes any better than Wikipedia does, so if you want to learn more, you should check out their [article about color blindness](#).

Dichromacy



Original Color
4B1E14

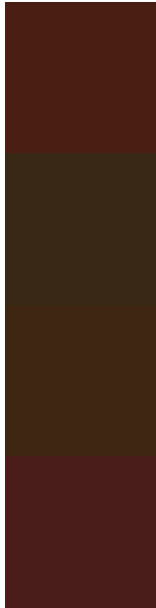
Protanopia
312D19

Deuteranopia
382A11



Tritanopia
4B1D1E

Trichromacy



Original Color

4B1E14

Protanomaly

3A2817

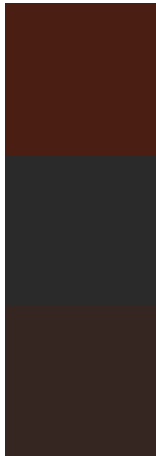
Deuteranomaly

3F2612

Tritanomaly

4B1D1A

Monochromacy



Original Color

4B1E14

Achromatopsia

2A2A2A

Achromatomaly

362622

CSS Examples

Text

The CSS property to change the color of the text to Hex 4B1E14 is called "color". The color property can be set on classes, ids or directly on the HTML element.

This example shows how text in the color #4B1E14 looks like.

```
.text, #text, p{  
    color:#4B1E14  
}
```

If you want to add a text shadow in that color use the text-shadow property, you can generate a text shadow directly with our [CSS Text Shadow Generator](#).

Here you see how black text with a 4 pixel #4B1E14 colored shadow looks like.

```
.shadow{ text-shadow: 4px 4px 2px #4B1E14
}
```

Border

The CSS property to change the border of an element to Hex 4B1E14 is called "border". The border property can be set on classes, ids or directly on the HTML element.

This example shows the color as border, it can be applied via the CSS property "border" or "border-color".

```
.border, #border, table{ border:4px solid
#4B1E14 }
```

If only the border color should be changed use the property `border-color`.

```
.border{ border-color:#4B1E14 }
```

If you want to add a box shadow in that color use:

Here you see how a box with a 4 pixel #4B1E14 colored shadow looks like.

```
.boxshadow{ -moz-box-shadow:4px 4px 4px  
4px #4B1E14; -webkit-box-shadow:4px 4px  
4px 4px #4B1E14; box-shadow:4px 4px 4px  
4px #4B1E14 }
```

Background

The CSS property to change the background color of an element to Hex 4B1E14 is called "background". The background property can be set on classes, ids or directly on the HTML element.

```
.background, #background, body{  
background:#4B1E14 }
```

If only the background color should be changed can be used:

```
.background{ background-color:#4B1E14 }
```

This example shows the color as background, it is applied via the CSS property "background".

To optimize and compress your CSS code, you can use our [online CSS compressor and optimizer](#) based on csstidy. If you want to create a linear or radial gradient as background or border, check our [CSS Gradient Generator](#).

Hey! You found this booklet interesting? Support Converting Colors with the new Membership Option!

The pro membership hides all ads, plus gives you double the colors in the color bucket, and more awesome pro features!

[Learn more, Memberships starting at \\$2.50/m!](#)

**Follow me
on Twitter!**

@ConvertingColor