

Converting Colors

Hex(4B1F15)

Have a look what the booklet for
Hex(4B1F15) contains.

Hex(4B1F15)	3
<i>Conversions</i>	4
<i>Details</i>	6
<i>Harmonies</i>	11
<i>Previews</i>	23
<i>Color Blindness Simulation</i>	26
<i>CSS Examples</i>	29

Color

Hex(4B1F15)

Conversions

Conversions Part 1

Format	Color
Hex	4B1F15
RGB	75, 31, 21
RGB Percent	29%, 12%, 8%
CMY	0.7059, 0.8784, 0.9176
CMYK	0.00, 0.59, 0.72, 0.71
HSL	11°, 56%, 19%
HSV	11°, 72%, 29%
XYZ	3.5270, 2.5300, 1.0119
YIQ	43.0160, 29.4340, 6.2180

Conversions

Conversions Part 2

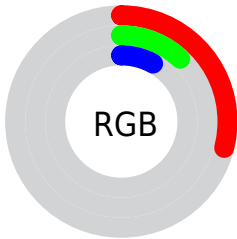
Format	Color
R_{YB}	75, 33, 21
Decimal	4923157
CIE Lab	18.05, 19.99, 16.66
CIE LCh	18, 26.025, 39.815
Yxy	2.5300, 0.4989, 0.3579
Android (android.graphics.Color)	4283113237 (0xFF4B1F15)
YUV	43.0160, -10.8539, 28.0500
Hunter-Lab	15.9059, 11.7456, 7.3622

Details

The Hex color **4B1F15** is a dark color, and the websafe version is hex **663333**. A complement of this color would be **15414B**, and the grayscale version is **2B2B2B**.

A 20% lighter version of the original color is **7F4C40**, and **180001** is the 20% darker color. If you saturate the color by 10%, you get **4B190D**, and if you desaturate by 10%, it is **4B251C**.

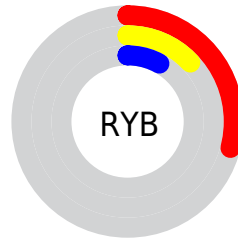
Distribution



Red (29%)

Green (12%)

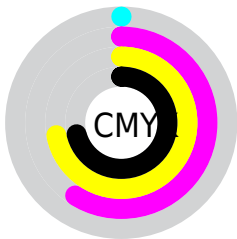
Blue (8%)



Red (29%)

Yellow (13%)

Blue (8%)

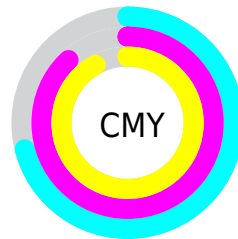


Cyan (0%)

Magenta (59%)

Yellow (72%)

Black (71%)



Cyan (71%)

Magenta (88%)

Yellow (92%)

Brightness & Saturation Gradients

These gradients show how the Hex color 4B1F15 changes by changing the brightness by 10 percent. The first figure shows a shift by +10% for each color and the second figure -10%.

Similar to the brightness gradients but the following saturation gradients show a change of the Hex color 4B1F15 by changing the saturation by 10% instead.

 4B1F15

 4B1F15

 FFFFF7

 330900

 7F4C40

 180001

 9A6557

 000000

 B67E6F

 D39889

 F0B3A3

 FFCFBE

 FFEFDA

 4B1F15

 4B1F15

■ 4B190D

■ 4B251C

■ 4B1306

■ 4B2B24

■ 4B0E00

■ 4B312B

■ 4B3733

■ 4B3E3A

■ 4B4442

■ 4B4A4A

■ 4B5051

■ 4B5659

Harmonies

Analogous

The Analogous color harmony consists of three colors that are next to each other on the color wheel.



4E1A27



4B1F15



402605

Triad

The Triadic color harmony groups three colors that are evenly spaced from another and form a triangle on the color wheel.



4B1F15



00341E



112C51

Complementary

The Complementary color scheme is a pair of colors which are on the opposite of each other on the color wheel.



4B1F15



15414B

Split Complementary

Split-complementary colors differ from the complementary color scheme. The scheme consists of three colors, the original color and two neighbors of the complement color.



00324F



4B1F15



003532

Square

The Square scheme is like the rectangle color scheme, but the four colors are evenly spaced on the color wheel.



4B1F15



1C320D



003444



352449

Rectangle

The Rectangle color scheme consists of four colors that form a rectangle on the color wheel.



4B1F15



362B00



003444



002E52

Sweetspot

The Sweet Spot groups the original color and five complimentary colors.



4B1F15



61504C



4B1541



302624



B0B0B0



303030

Same Dimension

The Same Dimension uses a secret algorithm to generate beautiful new colors.



4B1F15



611D0E



4B3A15



262322



661300



E62A00

Inverse Universe

The Inverse Universe completely reimagines the original color for something new.



15414B



0E5161



15264B



222626



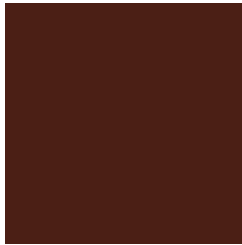
005366



00BBE6

Previews

White Background



This preview shows how the Hex color 4B1F15 looks on a white background.

Color Contrast Check

Large Text (above 18pt) WCAG AA ✓ Pass

Any Text WCAG AA ✓ Pass

Large Text (above 18pt) WCAG AAA ✓ Pass

Any Text WCAG AAA ✓ Pass

Black Background



Color Contrast Check

Large Text (above 18pt) WCAG AA × Fail

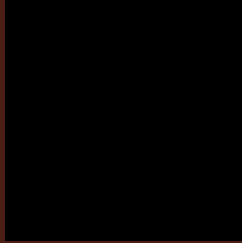
Any Text WCAG AA × Fail

Large Text (above 18pt) WCAG AAA × Fail

Any Text WCAG AAA × Fail

If you want to check with other color combinations, try the [Color Contrast Checker](#).

Hex 4B1F15 Background



This preview shows how black text looks on a background with the Hex color 4B1F15.

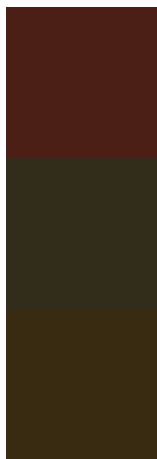


This preview shows how white text looks on a background with the Hex color 4B1F15.

Color Blindness Simulation

Color vision deficiency is a very complex topic, and I could not describe the different causes any better than Wikipedia does, so if you want to learn more, you should check out their [article about color blindness](#).

Dichromacy



Original Color
4B1F15

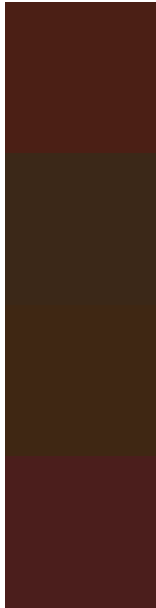
Protanopia
322D1A

Deuteranopia
382B12



Tritanopia
4B1E20

Trichromacy



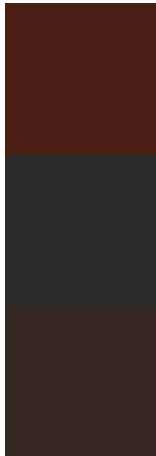
Original Color
4B1F15

Protanomaly
3B2818

Deuteranomaly
3F2713

Tritanomaly
4B1E1C

Monochromacy



Original Color
4B1F15

Achromatopsia
2B2B2B

Achromatomaly
372723

CSS Examples

Text

The CSS property to change the color of the text to Hex 4B1F15 is called "color". The color property can be set on classes, ids or directly on the HTML element.

This example shows how text in the color #4B1F15 looks like.

```
.text, #text, p{  
    color:#4B1F15  
}
```

If you want to add a text shadow in that color use the text-shadow property, you can generate a text shadow directly with our [CSS Text Shadow Generator](#).

Here you see how black text with a 4 pixel #4B1F15 colored shadow looks like.

```
.shadow{ text-shadow: 4px 4px 2px #4B1F15
}
```

Border

The CSS property to change the border of an element to Hex 4B1F15 is called "border". The border property can be set on classes, ids or directly on the HTML element.

This example shows the color as border, it can be applied via the CSS property "border" or "border-color".

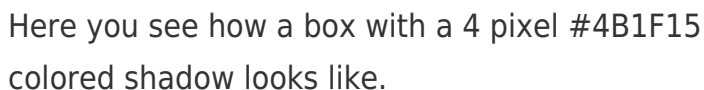
```
.border, #border, table{ border:4px solid
#4B1F15 }
```

If only the border color should be changed use the property `border-color`.

```
.border{ border-color:#4B1F15 }
```

If you want to add a box shadow in that color use:

Here you see how a box with a 4 pixel #4B1F15 colored shadow looks like.



```
.boxshadow{ -moz-box-shadow:4px 4px 4px  
4px #4B1F15; -webkit-box-shadow:4px 4px  
4px 4px #4B1F15; box-shadow:4px 4px 4px  
4px #4B1F15 }
```

Background

The CSS property to change the background color of an element to Hex 4B1F15 is called "background". The background property can be set on classes, ids or directly on the HTML element.

```
.background, #background, body{  
background:#4B1F15 }
```

If only the background color should be changed can be used:

```
.background{ background-color:#4B1F15 }
```

This example shows the color as background, it is applied via the CSS property "background".

To optimize and compress your CSS code, you can use our [online CSS compressor and optimizer](#) based on csstidy. If you want to create a linear or radial gradient as background or border, check our [CSS Gradient Generator](#).

Hey! You found this booklet interesting? Support Converting Colors with the new Membership Option!

The pro membership hides all ads, plus gives you double the colors in the color bucket, and more awesome pro features!

[Learn more, Memberships starting at \\$2.50/m!](#)

**Follow me
on Twitter!**

@ConvertingColor