

Converting Colors

Hex(4B2D2E)

Have a look what the booklet for
Hex(4B2D2E) contains.

Hex(4B2D2E)	3
<i>Conversions</i>	4
<i>Details</i>	6
<i>Harmonies</i>	11
<i>Previews</i>	23
<i>Color Blindness Simulation</i>	26
<i>CSS Examples</i>	29

Color

Hex(4B2D2E)

Conversions

Conversions Part 1

Format	Color
Hex	4B2D2E
RGB	75, 45, 46
RGB Percent	29%, 18%, 18%
CMY	0.7059, 0.8235, 0.8196
CMYK	0.00, 0.40, 0.39, 0.71
HSL	358°, 25%, 24%
HSV	358°, 40%, 29%
XYZ	4.3332, 3.5699, 3.0454
YIQ	54.0840, 17.5590, 6.6710

Conversions

Conversions Part 2

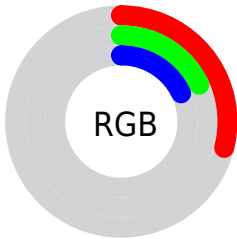
Format	Color
R_{YB}	75, 45, 46
Decimal	4926766
CIE _{Lab}	22.20, 13.98, 5.14
CIE _{LCh}	22, 14.900, 20.196
Yxy	3.5699, 0.3958, 0.3261
Android (android.graphics.Color)	4283116846 (0xFF4B2D2E)
YUV	54.0840, -3.9854, 18.3433
Hunter-Lab	18.8941, 7.8724, 3.6693

Details

The Hex color **4B2D2E** is a dark color, and the websafe version is hex **663333**. A complement of this color would be **2D4B4A**, and the grayscale version is **363636**.

A 20% lighter version of the original color is **7D5B5C**, and **200000** is the 20% darker color. If you saturate the color by 10%, you get **4B2627**, and if you desaturate by 10%, it is **4B3535**.

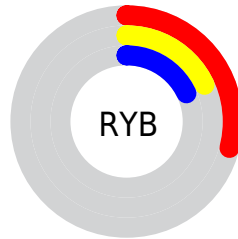
Distribution



Red (29%)

Green (18%)

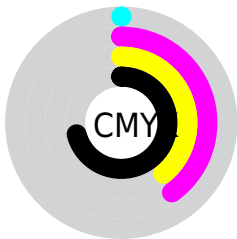
Blue (18%)



Red (29%)

Yellow (18%)

Blue (18%)

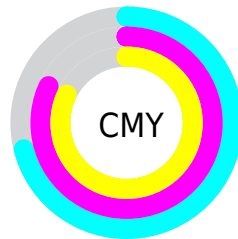


Cyan (0%)

Magenta (40%)

Yellow (39%)

Black (71%)



Cyan (71%)

Magenta (82%)

Yellow (82%)

Brightness & Saturation Gradients

These gradients show how the Hex color 4B2D2E changes by changing the brightness by 10 percent. The first figure shows a shift by +10% for each color and the second figure -10%.

Similar to the brightness gradients but the following saturation gradients show a change of the Hex color 4B2D2E by changing the saturation by 10% instead.



4B2D2E



4B2D2E

FFFFFF



331819



7D5B5C



200000



977474



000000



B28D8E



CEA8A8



EBC3C3



FFDFDF



FFFCFC



4B2D2E



4B2D2E

■ 4B2627

■ 4B3535

■ 4B1E1F

■ 4B3C3D

■ 4B1718

■ 4B4444

■ 4B0F11

■ 4B4B4B

■ 4B070A

■ 4B5352

■ 4B0002

■ 4B5A5A

■ 4B6261

■ 4B6968

■ 4B716F

Harmonies

Analogous

The Analogous color harmony consists of three colors that are next to each other on the color wheel.



482D39



4B2D2E



482F25

Triad

The Triadic color harmony groups three colors that are evenly spaced from another and form a triangle on the color wheel.



4B2D2E



283927



20374B

Complementary

The Complementary color scheme is a pair of colors which are on the opposite of each other on the color wheel.



4B2D2E



2D4B4A

Split Complementary

Split-complementary colors differ from the complementary color scheme. The scheme consists of three colors, the original color and two neighbors of the complement color.



113A46



4B2D2E



1B3B31

Square

The Square scheme is like the rectangle color scheme, but the four colors are evenly spaced on the color wheel.



4B2D2E



353720



103B3C



31344A

Rectangle

The Rectangle color scheme consists of four colors that form a rectangle on the color wheel.



4B2D2E



433220



103B3C



1B384A

Sweetspot

The Sweet Spot groups the original color and five complimentary colors.



4B2D2E



615556



4A2D4B



302A2A



B0B0B0



303030

Same Dimension

The Same Dimension uses a secret algorithm to generate beautiful new colors.



4B2D2E



613234



4B3B2D



262223



660003



E60008

Inverse Universe

The Inverse Universe completely reimagines the original color for something new.



4B2D2E



613234



2D3D4B



262223



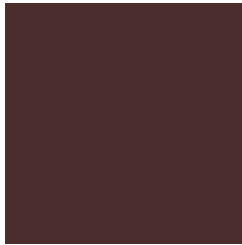
660003



E60008

Previews

White Background



This preview shows how the Hex color 4B2D2E looks on a white background.

Color Contrast Check

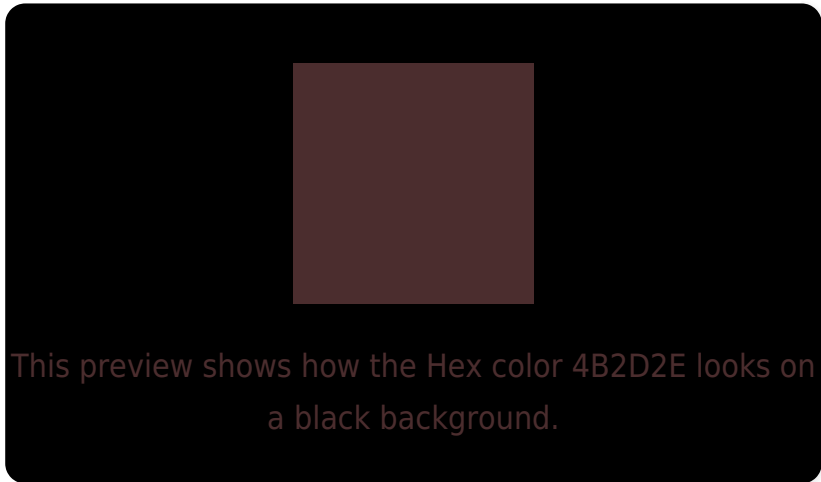
Large Text (above 18pt) WCAG AA ✓ Pass

Any Text WCAG AA ✓ Pass

Large Text (above 18pt) WCAG AAA ✓ Pass

Any Text WCAG AAA ✓ Pass

Black Background



Color Contrast Check

Large Text (above 18pt) WCAG AA × Fail

Any Text WCAG AA × Fail

Large Text (above 18pt) WCAG AAA × Fail

Any Text WCAG AAA × Fail

If you want to check with other color combinations, try the [Color Contrast Checker](#).

Hex 4B2D2E Background



This preview shows how black text looks on a background with the Hex color 4B2D2E.

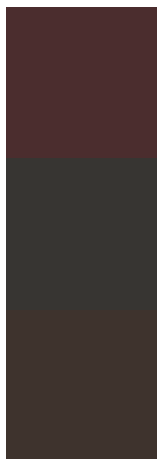


This preview shows how white text looks on a background with the Hex color 4B2D2E.

Color Blindness Simulation

Color vision deficiency is a very complex topic, and I could not describe the different causes any better than Wikipedia does, so if you want to learn more, you should check out their [article about color blindness](#).

Dichromacy



Original Color
4B2D2E

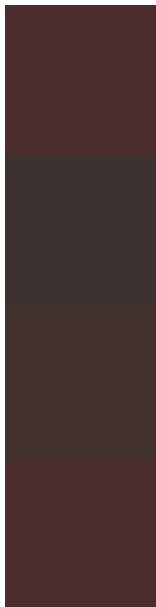
Protanopia
373532

Deuteranopia
3E332D



Tritanopia
4B2D30

Trichromacy



Original Color

4B2D2E

Protanomaly

3E3231

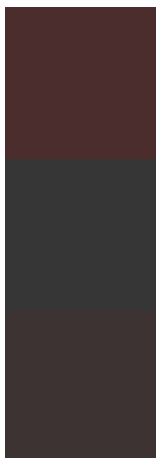
Deuteranomaly

43312D

Tritanomaly

4B2D2F

Monochromacy



Original Color

4B2D2E

Achromatopsia

363636

Achromatomaly

3E3333

CSS Examples

Text

The CSS property to change the color of the text to Hex 4B2D2E is called "color". The color property can be set on classes, ids or directly on the HTML element.

This example shows how text in the color #4B2D2E looks like.

```
.text, #text, p{  
    color:#4B2D2E  
}
```

If you want to add a text shadow in that color use the text-shadow property, you can generate a text shadow directly with our [CSS Text Shadow Generator](#).

Here you see how black text with a 4 pixel #4B2D2E colored shadow looks like.

```
.shadow{ text-shadow: 4px 4px 2px #4B2D2E
}
```

Border

The CSS property to change the border of an element to Hex 4B2D2E is called "border". The border property can be set on classes, ids or directly on the HTML element.

This example shows the color as border, it can be applied via the CSS property "border" or "border-color".

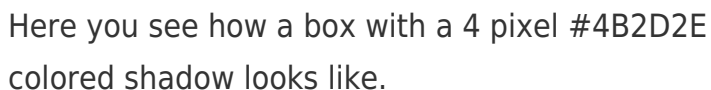
```
.border, #border, table{ border:4px solid
#4B2D2E }
```

If only the border color should be changed use the property `border-color`.

```
.border{ border-color:#4B2D2E }
```

If you want to add a box shadow in that color use:

Here you see how a box with a 4 pixel #4B2D2E colored shadow looks like.



```
.boxshadow{ -moz-box-shadow:4px 4px 4px  
4px #4B2D2E; -webkit-box-shadow:4px 4px  
4px 4px #4B2D2E; box-shadow:4px 4px 4px  
4px #4B2D2E }
```

Background

The CSS property to change the background color of an element to Hex 4B2D2E is called "background". The background property can be set on classes, ids or directly on the HTML element.

```
.background, #background, body{  
background:#4B2D2E }
```

If only the background color should be changed can be used:

```
.background{ background-color:#4B2D2E }
```

This example shows the color as background, it is applied via the CSS property "background".

To optimize and compress your CSS code, you can use our [online CSS compressor and optimizer](#) based on csstidy. If you want to create a linear or radial gradient as background or border, check our [CSS Gradient Generator](#).

Hey! You found this booklet
interesting? Support Converting
Colors with the new Membership
Option!

The pro membership hides all ads, plus gives you
double the colors in the color bucket, and more
awesome pro features!

[Learn more, Memberships starting at \\$2.50/m!](#)

**Follow me
on Twitter!**

@ConvertingColor