

Converting Colors

Hex(4C2123)

Have a look what the booklet for
Hex(4C2123) contains.

Hex(4C2123)	3
<i>Conversions</i>	4
<i>Details</i>	6
<i>Harmonies</i>	11
<i>Previews</i>	23
<i>Color Blindness Simulation</i>	26
<i>CSS Examples</i>	29

Color

Hex(4C2123)

Conversions

Conversions Part 1

Format	Color
Hex	4C2123
RGB	76, 33, 35
RGB Percent	30%, 13%, 14%
CMY	0.7020, 0.8706, 0.8627
CMYK	0.00, 0.57, 0.54, 0.70
HSL	357°, 39%, 21%
HSV	357°, 57%, 30%
XYZ	3.8277, 2.7456, 1.9183
YIQ	46.0850, 24.9860, 9.7380

Conversions

Conversions Part 2

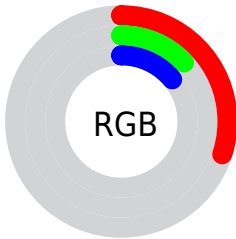
Format	Color
R_{YB}	76, 33, 35
Decimal	4989219
CIE Lab	18.99, 20.55, 8.29
CIE LCh	19, 22.156, 21.984
Yxy	2.7456, 0.4508, 0.3233
Android (android.graphics.Color)	4283179299 (0xFF4C2123)
YUV	46.0850, -5.4649, 26.2355
Hunter-Lab	16.5697, 12.2377, 4.7347

Details

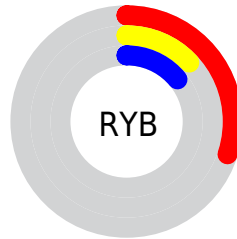
The Hex color **4C2123** is a dark color, and the websafe version is hex **663333**. A complement of this color would be **214C4A**, and the grayscale version is **2E2E2E**.

A 20% lighter version of the original color is **7F4F4F**, and **1E0001** is the 20% darker color. If you saturate the color by 10%, you get **4C191C**, and if you desaturate by 10%, it is **4C292A**.

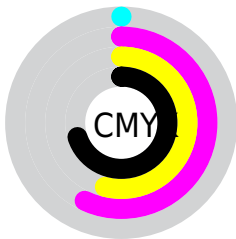
Distribution



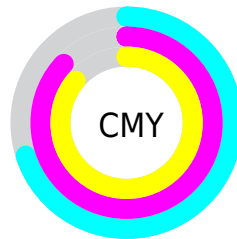
- Red (30%)
- Green (13%)
- Blue (14%)



- Red (30%)
- Yellow (13%)
- Blue (14%)



- Cyan (0%)
- Magenta (57%)
- Yellow (54%)
- Black (70%)



- Cyan (70%)
- Magenta (87%)
- Yellow (86%)

Brightness & Saturation Gradients

These gradients show how the Hex color 4C2123 changes by changing the brightness by 10 percent. The first figure shows a shift by +10% for each color and the second figure -10%.

Similar to the brightness gradients but the following saturation gradients show a change of the Hex color 4C2123 by changing the saturation by 10% instead.



4C2123



4C2123

FFFFFF



340B0D



7F4F4F



1E0001



9A6767



000000



B68080



D29B9A



EFB6B5



FFD1D1



FFEEEE



4C2123



4C2123

■ 4C191C

■ 4C292A

■ 4C1215

■ 4C3031

■ 4C0A0D

■ 4C3839

■ 4C0306

■ 4C3F40

■ 4C0004

■ 4C4747

■ 4C4F4E

■ 4C5656

■ 4C5E5D

■ 4C6564

Harmonies

Analogous

The Analogous color harmony consists of three colors that are next to each other on the color wheel.



4A2133



4C2123



462615

Triad

The Triadic color harmony groups three colors that are evenly spaced from another and form a triangle on the color wheel.



4C2123



18341A



00314E

Complementary

The Complementary color scheme is a pair of colors which are on the opposite of each other on the color wheel.



4C2123



214C4A

Split Complementary

Split-complementary colors differ from the complementary color scheme. The scheme consists of three colors, the original color and two neighbors of the complement color.



003547



4C2123



003629

Square

The Square scheme is like the rectangle color scheme, but the four colors are evenly spaced on the color wheel.



4C2123



2C310F



00363A



282C4C

Rectangle

The Rectangle color scheme consists of four colors that form a rectangle on the color wheel.



4C2123



3F2A0F



00363A



00334D

Sweetspot

The Sweet Spot groups the original color and five complimentary colors.



4C2123



635353



4A214C



332929



B3B3B3



333333

Same Dimension

The Same Dimension uses a secret algorithm to generate beautiful new colors.



4C2123



632023



4C3421



262223



660005



E6000B

Inverse Universe

The Inverse Universe completely reimagines the original color for something new.



4C2123



632023



21394C



262223



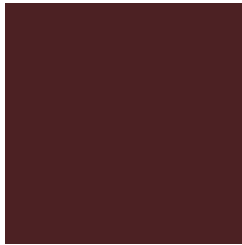
660005



E6000B

Previews

White Background



This preview shows how the Hex color 4C2123 looks on a white background.

Color Contrast Check

Large Text (above 18pt) WCAG AA ✓ Pass

Any Text WCAG AA ✓ Pass

Large Text (above 18pt) WCAG AAA ✓ Pass

Any Text WCAG AAA ✓ Pass

Black Background



Color Contrast Check

Large Text (above 18pt) WCAG AA × Fail

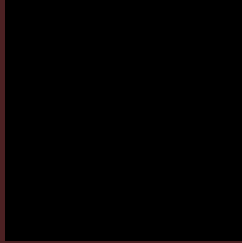
Any Text WCAG AA × Fail

Large Text (above 18pt) WCAG AAA × Fail

Any Text WCAG AAA × Fail

If you want to check with other color combinations, try the [Color Contrast Checker](#).

Hex 4C2123 Background



This preview shows how black text looks on a background with the Hex color 4C2123.



This preview shows how white text looks on a background with the Hex color 4C2123.

Color Blindness Simulation

Color vision deficiency is a very complex topic, and I could not describe the different causes any better than Wikipedia does, so if you want to learn more, you should check out their [article about color blindness](#).

Dichromacy



Original Color
4C2123

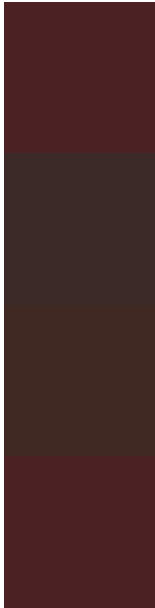
Protanopia
312F29

Deuteranopia
382D21



Tritanopia
4C2123

Trichromacy



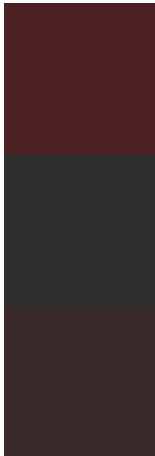
Original Color
4C2123

Protanomaly
3B2A27

Deuteranomaly
3F2922

Tritanomaly
4C2123

Monochromacy



Original Color
4C2123

Achromatopsia
2E2E2E

Achromatomaly
39292A

CSS Examples

Text

The CSS property to change the color of the text to Hex 4C2123 is called "color". The color property can be set on classes, ids or directly on the HTML element.

This example shows how text in the color #4C2123 looks like.

```
.text, #text, p{  
    color:#4C2123  
}
```

If you want to add a text shadow in that color use the text-shadow property, you can generate a text shadow directly with our [CSS Text Shadow Generator](#).

Here you see how black text with a 4 pixel #4C2123 colored shadow looks like.

```
.shadow{ text-shadow: 4px 4px 2px #4C2123
}
```

Border

The CSS property to change the border of an element to Hex 4C2123 is called "border". The border property can be set on classes, ids or directly on the HTML element.

This example shows the color as border, it can be applied via the CSS property "border" or "border-color".

```
.border, #border, table{ border:4px solid
#4C2123 }
```

If only the border color should be changed use the property `border-color`.

```
.border{ border-color:#4C2123 }
```

If you want to add a box shadow in that color use:

Here you see how a box with a 4 pixel #4C2123 colored shadow looks like.

```
.boxshadow{ -moz-box-shadow:4px 4px 4px  
4px #4C2123; -webkit-box-shadow:4px 4px  
4px 4px #4C2123; box-shadow:4px 4px 4px  
4px #4C2123 }
```

Background

The CSS property to change the background color of an element to Hex 4C2123 is called "background". The background property can be set on classes, ids or directly on the HTML element.

```
.background, #background, body{  
background:#4C2123 }
```

If only the background color should be changed can be used:

```
.background{ background-color:#4C2123 }
```

This example shows the color as background, it is applied via the CSS property "background".

To optimize and compress your CSS code, you can use our [online CSS compressor and optimizer](#) based on csstidy. If you want to create a linear or radial gradient as background or border, check our [CSS Gradient Generator](#).

Hey! You found this booklet
interesting? Support Converting
Colors with the new Membership
Option!

The pro membership hides all ads, plus gives you
double the colors in the color bucket, and more
awesome pro features!

[Learn more, Memberships starting at \\$2.50/m!](#)

**Follow me
on Twitter!**

@ConvertingColor