

Converting Colors

Hex(4C221F)

Have a look what the booklet for
Hex(4C221F) contains.

Hex(4C221F)	3
<i>Conversions</i>	4
<i>Details</i>	6
<i>Harmonies</i>	11
<i>Previews</i>	23
<i>Color Blindness Simulation</i>	26
<i>CSS Examples</i>	29

Color

Hex(4C221F)

Conversions

Conversions Part 1

Format	Color
Hex	4C221F
RGB	76, 34, 31
RGB Percent	30%, 13%, 12%
CMY	0.7020, 0.8667, 0.8784
CMYK	0.00, 0.55, 0.59, 0.70
HSL	4°, 42%, 21%
HSV	4°, 59%, 30%
XYZ	3.7998, 2.7795, 1.6325
YIQ	46.2160, 25.9950, 7.9710

Conversions

Conversions Part 2

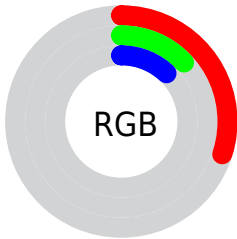
Format	Color
R_YB	76, 34, 31
Decimal	4989471
CIE _{Lab}	19.14, 19.51, 11.27
CIE _{LCh}	19, 22.529, 30.005
Yxy	2.7795, 0.4627, 0.3385
Android (android.graphics.Color)	4283179551 (0xFF4C221F)
YUV	46.2160, -7.5015, 26.1206
Hunter-Lab	16.6718, 11.5082, 5.8644

Details

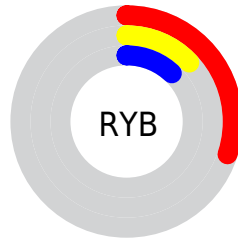
The Hex color **4C221F** is a dark color, and the websafe version is hex **663333**. A complement of this color would be **1F494C**, and the grayscale version is **2E2E2E**.

A 20% lighter version of the original color is **80504B**, and **1D0001** is the 20% darker color. If you saturate the color by 10%, you get **4C1B17**, and if you desaturate by 10%, it is **4C2927**.

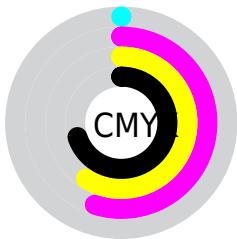
Distribution



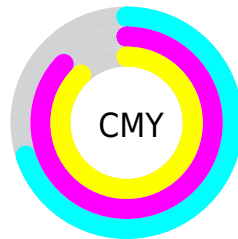
- Red (30%)
- Green (13%)
- Blue (12%)



- Red (30%)
- Yellow (13%)
- Blue (12%)



- Cyan (0%)
- Magenta (55%)
- Yellow (59%)
- Black (70%)



- Cyan (70%)
- Magenta (87%)
- Yellow (88%)

Brightness & Saturation Gradients

These gradients show how the Hex color 4C221F changes by changing the brightness by 10 percent. The first figure shows a shift by +10% for each color and the second figure -10%.

Similar to the brightness gradients but the following saturation gradients show a change of the Hex color 4C221F by changing the saturation by 10% instead.



4C221F



4C221F

FFFFFF



340C07



80504B



1D0001



9A6863



000000



B6817B



D29C95



EFB7B0



FFD2CB



FFEFEB



4C221F



4C221F

■ 4C1B17

■ 4C2927

■ 4C1410

■ 4C302E

■ 4C0D08

■ 4C3736

■ 4C0601

■ 4C3E3D

■ 4C0500

■ 4C4545

■ 4C4D4D

■ 4C5454

■ 4C5B5C

■ 4C6263

Harmonies

Analogous

The Analogous color harmony consists of three colors that are next to each other on the color wheel.



4C202F



4C221F



452812

Triad

The Triadic color harmony groups three colors that are evenly spaced from another and form a triangle on the color wheel.



4C221F



11351D



0D304F

Complementary

The Complementary color scheme is a pair of colors which are on the opposite of each other on the color wheel.



4C221F



1F494C

Split Complementary

Split-complementary colors differ from the complementary color scheme. The scheme consists of three colors, the original color and two neighbors of the complement color.



00344A



4C221F



00372E

Square

The Square scheme is like the rectangle color scheme, but the four colors are evenly spaced on the color wheel.



4C221F



273211



00363E



2F2A4B

Rectangle

The Rectangle color scheme consists of four colors that form a rectangle on the color wheel.



4C221F



3C2C0D



00363E



00324F

Sweetspot

The Sweet Spot groups the original color and five complimentary colors.



4C221F



635352



4C1F49



332928



B3B3B3



333333

Same Dimension

The Same Dimension uses a secret algorithm to generate beautiful new colors.



4C221F



63221D



4C391F



262322



660700



E60F00

Inverse Universe

The Inverse Universe completely reimagines the original color for something new.



1F494C



1D5F63



1F334C



222626



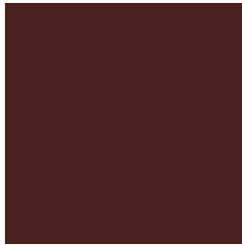
005F66



00D6E6

Previews

White Background



This preview shows how the Hex color 4C221F looks on a white background.

Color Contrast Check

Large Text (above 18pt) WCAG AA ✓ Pass

Any Text WCAG AA ✓ Pass

Large Text (above 18pt) WCAG AAA ✓ Pass

Any Text WCAG AAA ✓ Pass

Black Background



Color Contrast Check

Large Text (above 18pt) WCAG AA × Fail

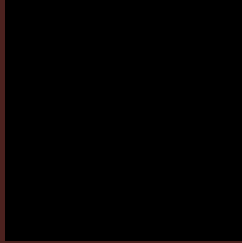
Any Text WCAG AA × Fail

Large Text (above 18pt) WCAG AAA × Fail

Any Text WCAG AAA × Fail

If you want to check with other color combinations, try the [Color Contrast Checker](#).

Hex 4C221F Background



This preview shows how black text looks on a background with the Hex color 4C221F.



This preview shows how white text looks on a background with the Hex color 4C221F.

Color Blindness Simulation

Color vision deficiency is a very complex topic, and I could not describe the different causes any better than Wikipedia does, so if you want to learn more, you should check out their [article about color blindness](#).

Dichromacy

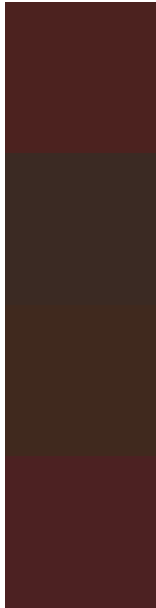


Original Color
4C221F

Protanopia
322F25

Deuteranopia
392D1D

Trichromacy



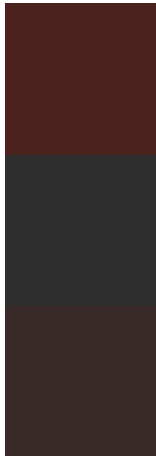
Original Color
4C221F

Protanomaly
3B2A23

Deuteranomaly
40291E

Tritanomaly
4C2122

Monochromacy



Original Color
4C221F

Achromatopsia
2E2E2E

Achromatomaly
392A29

CSS Examples

Text

The CSS property to change the color of the text to Hex 4C221F is called "color". The color property can be set on classes, ids or directly on the HTML element.

This example shows how text in the color #4C221F looks like.

```
.text, #text, p{  
    color:#4C221F  
}
```

If you want to add a text shadow in that color use the text-shadow property, you can generate a text shadow directly with our [CSS Text Shadow Generator](#).

Here you see how black text with a 4 pixel #4C221F colored shadow looks like.

```
.shadow{ text-shadow: 4px 4px 2px #4C221F
}
```

Border

The CSS property to change the border of an element to Hex 4C221F is called "border". The border property can be set on classes, ids or directly on the HTML element.

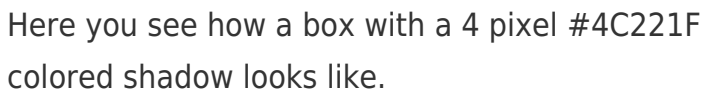
This example shows the color as border, it can be applied via the CSS property "border" or "border-color".

```
.border, #border, table{ border:4px solid
#4C221F }
```

If only the border color should be changed use the property `border-color`.

```
.border{ border-color:#4C221F }
```

If you want to add a box shadow in that color use:



Here you see how a box with a 4 pixel #4C221F colored shadow looks like.

```
.boxshadow{ -moz-box-shadow:4px 4px 4px  
4px #4C221F; -webkit-box-shadow:4px 4px  
4px 4px #4C221F; box-shadow:4px 4px 4px  
4px #4C221F }
```

Background

The CSS property to change the background color of an element to Hex 4C221F is called "background". The background property can be set on classes, ids or directly on the HTML element.

```
.background, #background, body{  
background:#4C221F }
```

If only the background color should be changed can be used:

```
.background{ background-color:#4C221F }
```

This example shows the color as background, it is applied via the CSS property "background".

To optimize and compress your CSS code, you can use our [online CSS compressor and optimizer](#) based on csstidy. If you want to create a linear or radial gradient as background or border, check our [CSS Gradient Generator](#).

Hey! You found this booklet interesting? Support Converting Colors with the new Membership Option!

The pro membership hides all ads, plus gives you double the colors in the color bucket, and more awesome pro features!

[Learn more, Memberships starting at \\$2.50/m!](#)

**Follow me
on Twitter!**

@ConvertingColor