

Converting Colors

Hex(4C262F)

Have a look what the booklet for
Hex(4C262F) contains.

Hex(4C262F)	3
<i>Conversions</i>	4
<i>Details</i>	6
<i>Harmonies</i>	11
<i>Previews</i>	23
<i>Color Blindness Simulation</i>	26
<i>CSS Examples</i>	29

Color

Hex(4C262F)

Conversions

Conversions Part 1

Format	Color
Hex	4C262F
RGB	76, 38, 47
RGB Percent	30%, 15%, 18%
CMY	0.7020, 0.8510, 0.8157
CMYK	0.00, 0.50, 0.38, 0.70
HSL	346°, 33%, 22%
HSV	346°, 50%, 30%
XYZ	4.1867, 3.1280, 3.0724
YIQ	50.3880, 19.7590, 10.8550

Conversions

Conversions Part 2

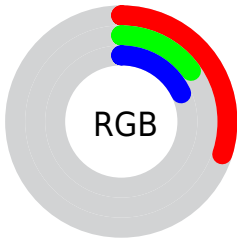
Format	Color
RYB	76, 38, 47
Decimal	4990511
CIELab	20.55, 19.04, 2.13
CIElCh	21, 19.161, 6.374
Yxy	3.1280, 0.4031, 0.3011
Android (android.graphics.Color)	4283180591 (0xFF4C262F)
YUV	50.3880, -1.6703, 22.4617
Hunter-Lab	17.6860, 11.3045, 2.0804

Details

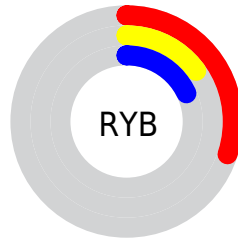
The Hex color **4C262F** is a dark color, and the websafe version is hex **663333**. A complement of this color would be **264C43**, and the grayscale version is **323232**.

A 20% lighter version of the original color is **7E545D**, and **220001** is the 20% darker color. If you saturate the color by 10%, you get **4C1E29**, and if you desaturate by 10%, it is **4C2E35**.

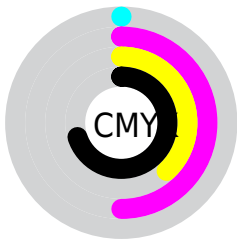
Distribution



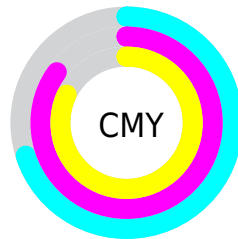
- Red (30%)
- Green (15%)
- Blue (18%)



- Red (30%)
- Yellow (15%)
- Blue (18%)



- Cyan (0%)
- Magenta (50%)
- Yellow (38%)
- Black (70%)



- Cyan (70%)
- Magenta (85%)
- Yellow (82%)

Brightness & Saturation Gradients

These gradients show how the Hex color 4C262F changes by changing the brightness by 10 percent. The first figure shows a shift by +10% for each color and the second figure -10%.

Similar to the brightness gradients but the following saturation gradients show a change of the Hex color 4C262F by changing the saturation by 10% instead.



4C262F



4C262F

FFFFFF



34111A



7E545D



220001



996C75



000000



B4868F



D0A0A9



EDBBC5



FFD7E1



FFF4FD



4C262F



4C262F

■ 4C1E29

■ 4C2E35

■ 4C1723

■ 4C353B

■ 4C0F1E

■ 4C3D40

■ 4C0818

■ 4C4446

■ 4C0012

■ 4C4C4C

■ 4C5452

■ 4C5B58

■ 4C635D

■ 4C6A63

Harmonies

Analogous

The Analogous color harmony consists of three colors that are next to each other on the color wheel.



45283D



4C262F



4B2822

Triad

The Triadic color harmony groups three colors that are evenly spaced from another and form a triangle on the color wheel.



4C262F



28361A



00364B

Complementary

The Complementary color scheme is a pair of colors which are on the opposite of each other on the color wheel.



4C262F



264C43

Split Complementary

Split-complementary colors differ from the complementary color scheme. The scheme consists of three colors, the original color and two neighbors of the complement color.



003842



4C262F



163826

Square

The Square scheme is like the rectangle color scheme, but the four colors are evenly spaced on the color wheel.



4C262F



373215



003934



20324D

Rectangle

The Rectangle color scheme consists of four colors that form a rectangle on the color wheel.



4C262F



462B1A



003934



003749

Sweetspot

The Sweet Spot groups the original color and five complimentary colors.



4C262F



635558



43264C



332A2C



B3B3B3



333333

Same Dimension

The Same Dimension uses a secret algorithm to generate beautiful new colors.



4C262F



632836



4C3026



262223



660018



E60036

Inverse Universe

The Inverse Universe completely reimagines the original color for something new.



4C262F



632836



26434C



262223



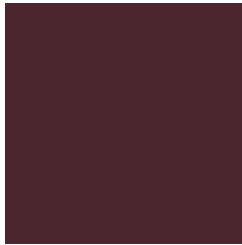
660018



E60036

Previews

White Background



This preview shows how the Hex color 4C262F looks on a white background.

Color Contrast Check

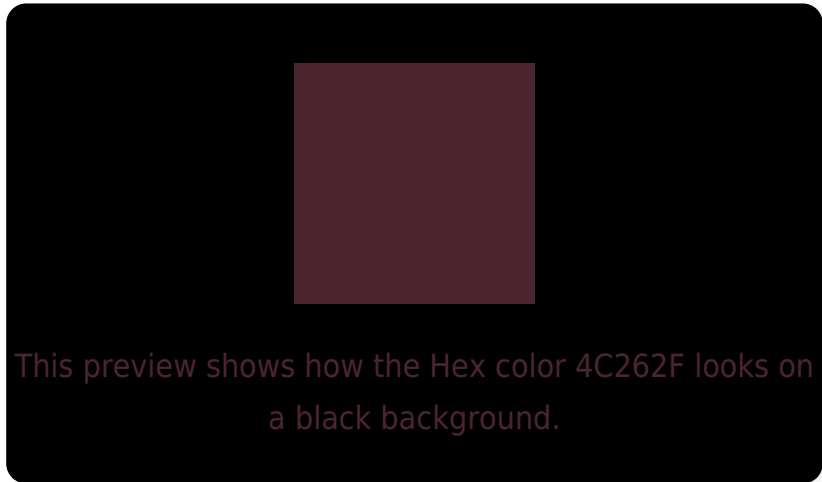
Large Text (above 18pt) WCAG AA ✓ Pass

Any Text WCAG AA ✓ Pass

Large Text (above 18pt) WCAG AAA ✓ Pass

Any Text WCAG AAA ✓ Pass

Black Background



Color Contrast Check

Large Text (above 18pt) WCAG AA × Fail

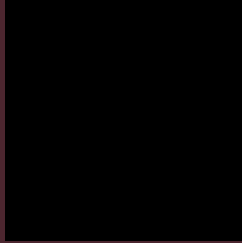
Any Text WCAG AA × Fail

Large Text (above 18pt) WCAG AAA × Fail

Any Text WCAG AAA × Fail

If you want to check with other color combinations, try the [Color Contrast Checker](#).

Hex 4C262F Background



This preview shows how black text looks on a background with the Hex color 4C262F.



This preview shows how white text looks on a background with the Hex color 4C262F.

Color Blindness Simulation

Color vision deficiency is a very complex topic, and I could not describe the different causes any better than Wikipedia does, so if you want to learn more, you should check out their [article about color blindness](#).

Dichromacy



Original Color
4C262F

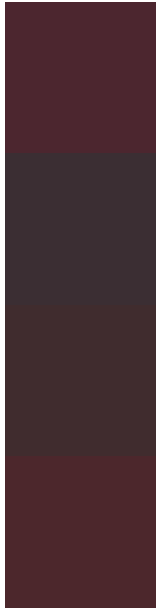
Protanopia
323236

Deuteranopia
39302D



Tritanopia
4C272A

Trichromacy



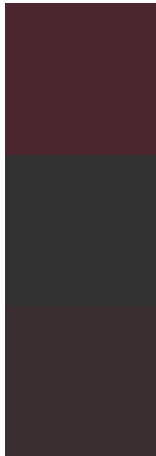
Original Color
4C262F

Protanomaly
3B2E33

Deuteranomaly
402C2E

Tritanomaly
4C272C

Monochromacy



Original Color
4C262F

Achromatopsia
323232

Achromatomaly
3B2E31

CSS Examples

Text

The CSS property to change the color of the text to Hex 4C262F is called "color". The color property can be set on classes, ids or directly on the HTML element.

This example shows how text in the color #4C262F looks like.

```
.text, #text, p{  
    color:#4C262F  
}
```

If you want to add a text shadow in that color use the text-shadow property, you can generate a text shadow directly with our [CSS Text Shadow Generator](#).

Here you see how black text with a 4 pixel #4C262F colored shadow looks like.

```
.shadow{ text-shadow: 4px 4px 2px #4C262F
}
```

Border

The CSS property to change the border of an element to Hex 4C262F is called "border". The border property can be set on classes, ids or directly on the HTML element.

This example shows the color as border, it can be applied via the CSS property "border" or "border-color".

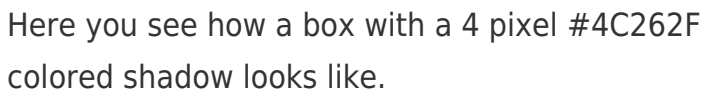
```
.border, #border, table{ border:4px solid
#4C262F }
```

If only the border color should be changed use the property `border-color`.

```
.border{ border-color:#4C262F }
```

If you want to add a box shadow in that color use:

Here you see how a box with a 4 pixel #4C262F colored shadow looks like.

A rectangular box with a dark red border and a dark red shadow. The box is white with a thin dark red border. Below and to the right of the box is a dark red shadow, creating a 3D effect. The shadow is rectangular and matches the color of the border.

```
.boxshadow{ -moz-box-shadow:4px 4px 4px  
4px #4C262F; -webkit-box-shadow:4px 4px  
4px 4px #4C262F; box-shadow:4px 4px 4px  
4px #4C262F }
```

Background

The CSS property to change the background color of an element to Hex 4C262F is called "background". The background property can be set on classes, ids or directly on the HTML element.

```
.background, #background, body{  
background:#4C262F }
```

If only the background color should be changed can be used:

```
.background{ background-color:#4C262F }
```

This example shows the color as background, it is applied via the CSS property "background".

To optimize and compress your CSS code, you can use our [online CSS compressor and optimizer](#) based on csstidy. If you want to create a linear or radial gradient as background or border, check our [CSS Gradient Generator](#).

Hey! You found this booklet interesting? Support Converting Colors with the new Membership Option!

The pro membership hides all ads, plus gives you double the colors in the color bucket, and more awesome pro features!

[Learn more, Memberships starting at \\$2.50/m!](#)

**Follow me
on Twitter!**

@ConvertingColor