

Converting Colors

Hex(4C2726)

Have a look what the booklet for
Hex(4C2726) contains.

Hex(4C2726)	3
<i>Conversions</i>	4
<i>Details</i>	6
<i>Harmonies</i>	11
<i>Previews</i>	23
<i>Color Blindness Simulation</i>	26
<i>CSS Examples</i>	29

Color

Hex(4C2726)

Conversions

Conversions Part 1

Format	Color
Hex	4C2726
RGB	76, 39, 38
RGB Percent	30%, 15%, 15%
CMY	0.7020, 0.8471, 0.8510
CMYK	0.00, 0.49, 0.50, 0.70
HSL	2°, 33%, 22%
HSV	2°, 50%, 30%
XYZ	4.0559, 3.1275, 2.2236
YIQ	49.9490, 22.3730, 7.5330

Conversions

Conversions Part 2

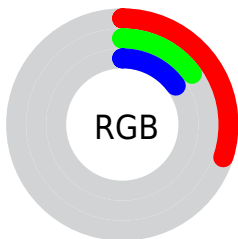
Format	Color
R_{YB}	76, 39, 38
Decimal	4990758
CIE Lab	20.55, 17.19, 8.35
CIE LCh	21, 19.110, 25.892
Yxy	3.1275, 0.4312, 0.3325
Android (android.graphics.Color)	4283180838 (0xFF4C2726)
YUV	49.9490, -5.8909, 22.8467
Hunter-Lab	17.6847, 9.9896, 4.9243

Details

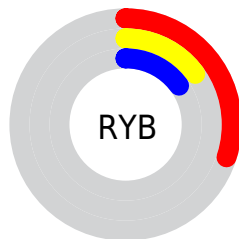
The Hex color **4C2726** is a dark color, and the websafe version is hex **663333**. A complement of this color would be **264B4C**, and the grayscale version is **323232**.

A 20% lighter version of the original color is **7F5553**, and **200000** is the 20% darker color. If you saturate the color by 10%, you get **4C201E**, and if you desaturate by 10%, it is **4C2E2E**.

Distribution



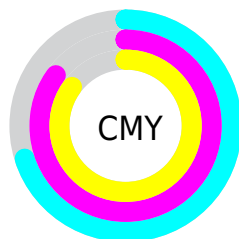
- Red (30%)
- Green (15%)
- Blue (15%)



- Red (30%)
- Yellow (15%)
- Blue (15%)



- Cyan (0%)
- Magenta (49%)
- Yellow (50%)
- Black (70%)



- Cyan (70%)
- Magenta (85%)
- Yellow (85%)

Brightness & Saturation Gradients

These gradients show how the Hex color 4C2726 changes by changing the brightness by 10 percent. The first figure shows a shift by +10% for each color and the second figure -10%.

Similar to the brightness gradients but the following saturation gradients show a change of the Hex color 4C2726 by changing the saturation by 10% instead.

 4C2726

 4C2726

FFFFFF

 341211

 7F5553

 200000

 996D6B

 000000

 B58784

 D1A19E

 EDBC B9

 FFD8D5

 FFF5F1

 4C2726

 4C2726

■ 4C201E

■ 4C2E2E

■ 4C1817

■ 4C3635

■ 4C110F

■ 4C3D3D

■ 4C0908

■ 4C4544

■ 4C0200

■ 4C4C4C

■ 4C5354

■ 4C5B5B

■ 4C6263

■ 4C6A6A

Harmonies

Analogous

The Analogous color harmony consists of three colors that are next to each other on the color wheel.



4B2634



4C2726



472B1B

Triad

The Triadic color harmony groups three colors that are evenly spaced from another and form a triangle on the color wheel.



4C2726



1D3721



16344D

Complementary

The Complementary color scheme is a pair of colors which are on the opposite of each other on the color wheel.



4C2726



264B4C

Split Complementary

Split-complementary colors differ from the complementary color scheme. The scheme consists of three colors, the original color and two neighbors of the complement color.



003748



4C2726



05392F

Square

The Square scheme is like the rectangle color scheme, but the four colors are evenly spaced on the color wheel.



4C2726



2E3418



00393D



302F4B

Rectangle

The Rectangle color scheme consists of four colors that form a rectangle on the color wheel.



4C2726



402E16



00393D



0A354C

Sweetspot

The Sweet Spot groups the original color and five complimentary colors.



4C2726



635555



4C264B



332A2A



B3B3B3



333333

Same Dimension

The Same Dimension uses a secret algorithm to generate beautiful new colors.



4C2726



632928



4C3A26



262322



660300



E60600

Inverse Universe

The Inverse Universe completely reimagines the original color for something new.



264B4C



286263



26384C



222626



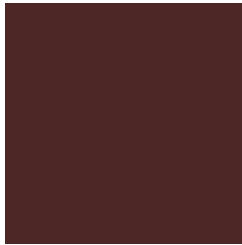
006366



00DFE6

Previews

White Background



This preview shows how the Hex color 4C2726 looks on a white background.

Color Contrast Check

Large Text (above 18pt) WCAG AA ✓ Pass

Any Text WCAG AA ✓ Pass

Large Text (above 18pt) WCAG AAA ✓ Pass

Any Text WCAG AAA ✓ Pass

Black Background



Color Contrast Check

Large Text (above 18pt) WCAG AA × Fail

Any Text WCAG AA × Fail

Large Text (above 18pt) WCAG AAA × Fail

Any Text WCAG AAA × Fail

If you want to check with other color combinations, try the [Color Contrast Checker](#).

Hex 4C2726 Background



This preview shows how black text looks on a background with the Hex color 4C2726.



This preview shows how white text looks on a background with the Hex color 4C2726.

Color Blindness Simulation

Color vision deficiency is a very complex topic, and I could not describe the different causes any better than Wikipedia does, so if you want to learn more, you should check out their [article about color blindness](#).

Dichromacy



Original Color
4C2726

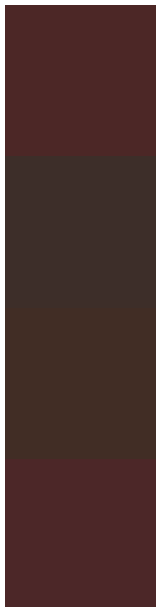
Protanopia
35322B

Deuteranopia
3B3024



Tritanopia
4C2729

Trichromacy



Original Color

4C2726

Protanomaly

3D2E29

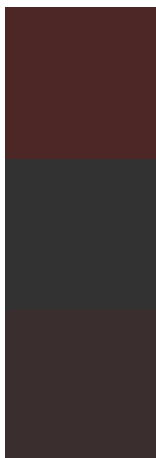
Deuteranomaly

412D25

Tritanomaly

4C2728

Monochromacy



Original Color

4C2726

Achromatopsia

323232

Achromatomaly

3B2E2E

CSS Examples

Text

The CSS property to change the color of the text to Hex 4C2726 is called "color". The color property can be set on classes, ids or directly on the HTML element.

This example shows how text in the color #4C2726 looks like.

```
.text, #text, p{  
    color:#4C2726  
}
```

If you want to add a text shadow in that color use the text-shadow property, you can generate a text shadow directly with our [CSS Text Shadow Generator](#).

Here you see how black text with a 4 pixel #4C2726 colored shadow looks like.

```
.shadow{ text-shadow: 4px 4px 2px #4C2726
}
```

Border

The CSS property to change the border of an element to Hex 4C2726 is called "border". The border property can be set on classes, ids or directly on the HTML element.

This example shows the color as border, it can be applied via the CSS property "border" or "border-color".

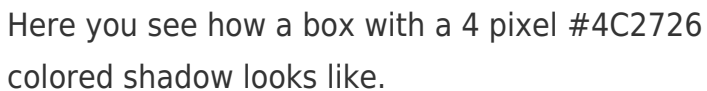
```
.border, #border, table{ border:4px solid
#4C2726 }
```

If only the border color should be changed use the property `border-color`.

```
.border{ border-color:#4C2726 }
```

If you want to add a box shadow in that color use:

Here you see how a box with a 4 pixel #4C2726 colored shadow looks like.

A rectangular box with a dark red border and a dark red shadow. The box is white with a thin dark red border on the top and left sides, and a thicker dark red shadow on the bottom and right sides.

```
.boxshadow{ -moz-box-shadow:4px 4px 4px  
4px #4C2726; -webkit-box-shadow:4px 4px  
4px 4px #4C2726; box-shadow:4px 4px 4px  
4px #4C2726 }
```

Background

The CSS property to change the background color of an element to Hex 4C2726 is called "background". The background property can be set on classes, ids or directly on the HTML element.

```
.background, #background, body{  
background:#4C2726 }
```

If only the background color should be changed can be used:

```
.background{ background-color:#4C2726 }
```

This example shows the color as background, it is applied via the CSS property "background".

To optimize and compress your CSS code, you can use our [online CSS compressor and optimizer](#) based on csstidy. If you want to create a linear or radial gradient as background or border, check our [CSS Gradient Generator](#).

Hey! You found this booklet
interesting? Support Converting
Colors with the new Membership
Option!

The pro membership hides all ads, plus gives you
double the colors in the color bucket, and more
awesome pro features!

[Learn more, Memberships starting at \\$2.50/m!](#)

**Follow me
on Twitter!**

@ConvertingColor