

Converting Colors

Hex(4C2F2B)

Have a look what the booklet for
Hex(4C2F2B) contains.

Hex(4C2F2B)	3
<i>Conversions</i>	4
<i>Details</i>	6
<i>Harmonies</i>	11
<i>Previews</i>	23
<i>Color Blindness Simulation</i>	26
<i>CSS Examples</i>	29

Color

Hex(4C2F2B)

Conversions

Conversions Part 1

Format	Color
Hex	4C2F2B
RGB	76, 47, 43
RGB Percent	30%, 18%, 17%
CMY	0.7020, 0.8157, 0.8314
CMYK	0.00, 0.38, 0.43, 0.70
HSL	7°, 28%, 23%
HSV	7°, 43%, 30%
XYZ	4.4331, 3.7439, 2.7745
YIQ	55.2150, 18.5680, 4.9040

Conversions

Conversions Part 2

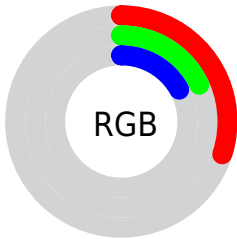
Format	Color
RYB	76, 48, 43
Decimal	4992811
CIELab	22.81, 12.71, 8.05
CIELCh	23, 15.049, 32.357
Yxy	3.7439, 0.4048, 0.3419
Android (android.graphics.Color)	4283182891 (0xFF4C2F2B)
YUV	55.2150, -6.0220, 18.2284
Hunter-Lab	19.3493, 7.0343, 5.0429

Details

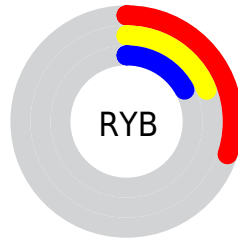
The Hex color **4C2F2B** is a dark color, and the websafe version is hex **663333**. A complement of this color would be **2B484C**, and the grayscale version is **373737**.

A 20% lighter version of the original color is **7E5D58**, and **210000** is the 20% darker color. If you saturate the color by 10%, you get **4C2823**, and if you desaturate by 10%, it is **4C3633**.

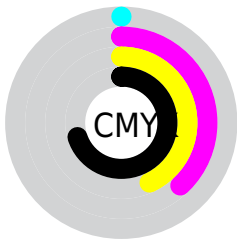
Distribution



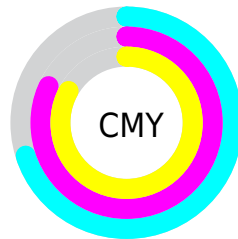
- Red (30%)
- Green (18%)
- Blue (17%)



- Red (30%)
- Yellow (19%)
- Blue (17%)



- Cyan (0%)
- Magenta (38%)
- Yellow (43%)
- Black (70%)



- Cyan (70%)
- Magenta (82%)
- Yellow (83%)

Brightness & Saturation Gradients

These gradients show how the Hex color 4C2F2B changes by changing the brightness by 10 percent. The first figure shows a shift by +10% for each color and the second figure -10%.

Similar to the brightness gradients but the following saturation gradients show a change of the Hex color 4C2F2B by changing the saturation by 10% instead.



4C2F2B



4C2F2B

FFFFFF



341A17



7E5D58



210000



997671



000000



B4908A



D0AAA5



ECC6C0



FFE2DB



FFFEF8



4C2F2B



4C2F2B

■ 4C2823

■ 4C3633

■ 4C221C

■ 4C3C3A

■ 4C1B14

■ 4C4342

■ 4C140D

■ 4C4A49

■ 4C0E05

■ 4C5051

■ 4C0900

■ 4C5759

■ 4C5E60

■ 4C6468

■ 4C6B6F

Harmonies

Analogous

The Analogous color harmony consists of three colors that are next to each other on the color wheel.



4C2E36



4C2F2B



473223

Triad

The Triadic color harmony groups three colors that are evenly spaced from another and form a triangle on the color wheel.



4C2F2B



243C2C



29374D

Complementary

The Complementary color scheme is a pair of colors which are on the opposite of each other on the color wheel.



4C2F2B



2B484C

Split Complementary

Split-complementary colors differ from the complementary color scheme. The scheme consists of three colors, the original color and two neighbors of the complement color.



183A4A



4C2F2B



173D37

Square

The Square scheme is like the rectangle color scheme, but the four colors are evenly spaced on the color wheel.



4C2F2B



313923



0F3C42



393349

Rectangle

The Rectangle color scheme consists of four colors that form a rectangle on the color wheel.



4C2F2B



413520



0F3C42



23384C

Sweetspot

The Sweet Spot groups the original color and five complimentary colors.



4C2F2B



635857



4C2B48



332C2B



B3B3B3



333333

Same Dimension

The Same Dimension uses a secret algorithm to generate beautiful new colors.



4C2F2B



633630



4C3F2B



262322



660C00



E61C00

Inverse Universe

The Inverse Universe completely reimagines the original color for something new.



2B484C



305D63



2B384C



222626



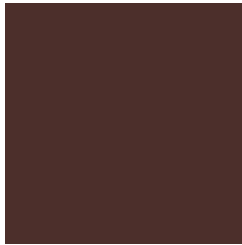
005A66



00CAE6

Previews

White Background



This preview shows how the Hex color 4C2F2B looks on a white background.

Color Contrast Check

Large Text (above 18pt) WCAG AA ✓ Pass

Any Text WCAG AA ✓ Pass

Large Text (above 18pt) WCAG AAA ✓ Pass

Any Text WCAG AAA ✓ Pass

Black Background



Color Contrast Check

Large Text (above 18pt) WCAG AA × Fail

Any Text WCAG AA × Fail

Large Text (above 18pt) WCAG AAA × Fail

Any Text WCAG AAA × Fail

If you want to check with other color combinations, try the [Color Contrast Checker](#).

Hex 4C2F2B Background



This preview shows how black text looks on a background with the Hex color 4C2F2B.

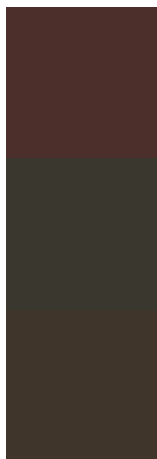


This preview shows how white text looks on a background with the Hex color 4C2F2B.

Color Blindness Simulation

Color vision deficiency is a very complex topic, and I could not describe the different causes any better than Wikipedia does, so if you want to learn more, you should check out their [article about color blindness](#).

Dichromacy



Original Color
4C2F2B

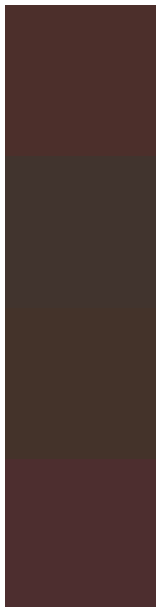
Protanopia
3A372F

Deuteranopia
40352A



Tritanopia
4D2E31

Trichromacy



Original Color

4C2F2B

Protanomaly

41342E

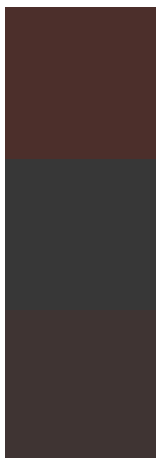
Deuteranomaly

44332A

Tritanomaly

4D2E2F

Monochromacy



Original Color

4C2F2B

Achromatopsia

373737

Achromatomaly

3F3433

CSS Examples

Text

The CSS property to change the color of the text to Hex 4C2F2B is called "color". The color property can be set on classes, ids or directly on the HTML element.

This example shows how text in the color #4C2F2B looks like.

```
.text, #text, p{  
    color:#4C2F2B  
}
```

If you want to add a text shadow in that color use the text-shadow property, you can generate a text shadow directly with our [CSS Text Shadow Generator](#).

Here you see how black text with a 4 pixel #4C2F2B colored shadow looks like.

```
.shadow{ text-shadow: 4px 4px 2px #4C2F2B
}
```

Border

The CSS property to change the border of an element to Hex 4C2F2B is called "border". The border property can be set on classes, ids or directly on the HTML element.

This example shows the color as border, it can be applied via the CSS property "border" or "border-color".

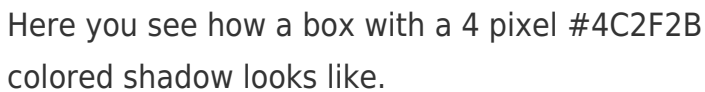
```
.border, #border, table{ border:4px solid
#4C2F2B }
```

If only the border color should be changed use the property `border-color`.

```
.border{ border-color:#4C2F2B }
```

If you want to add a box shadow in that color use:

Here you see how a box with a 4 pixel #4C2F2B colored shadow looks like.



```
.boxshadow{ -moz-box-shadow:4px 4px 4px  
4px #4C2F2B; -webkit-box-shadow:4px 4px  
4px 4px #4C2F2B; box-shadow:4px 4px 4px  
4px #4C2F2B }
```

Background

The CSS property to change the background color of an element to Hex 4C2F2B is called "background". The background property can be set on classes, ids or directly on the HTML element.

```
.background, #background, body{  
background:#4C2F2B }
```

If only the background color should be changed can be used:

```
.background{ background-color:#4C2F2B }
```

This example shows the color as background, it is applied via the CSS property "background".

To optimize and compress your CSS code, you can use our [online CSS compressor and optimizer](#) based on csstidy. If you want to create a linear or radial gradient as background or border, check our [CSS Gradient Generator](#).

Hey! You found this booklet interesting? Support Converting Colors with the new Membership Option!

The pro membership hides all ads, plus gives you double the colors in the color bucket, and more awesome pro features!

[Learn more, Memberships starting at \\$2.50/m!](#)

**Follow me
on Twitter!**

@ConvertingColor