

Converting Colors

Hex(4C3F32)

Have a look what the booklet for
Hex(4C3F32) contains.

Hex(4C3F32)	3
<i>Conversions</i>	4
<i>Details</i>	6
<i>Harmonies</i>	11
<i>Previews</i>	23
<i>Color Blindness Simulation</i>	26
<i>CSS Examples</i>	29

Color

Hex(4C3F32)

Conversions

Conversions Part 1

Format	Color
Hex	4C3F32
RGB	76, 63, 50
RGB Percent	30%, 25%, 20%
CMY	0.7020, 0.7529, 0.8039
CMYK	0.00, 0.17, 0.34, 0.70
HSL	30°, 21%, 25%
HSV	30°, 34%, 30%
XYZ	5.3337, 5.3218, 3.7637
YIQ	65.4050, 11.9210, -1.2870

Conversions

Conversions Part 2

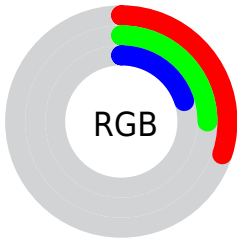
Format	Color
R_{YB}	76, 76, 50
Decimal	4996914
CIE Lab	27.63, 3.35, 10.08
CIE LCh	28, 10.622, 71.591
Yxy	5.3218, 0.3699, 0.3691
Android (android.graphics.Color)	4283186994 (0xFF4C3F32)
YUV	65.4050, -7.5947, 9.2918
Hunter-Lab	23.0690, 0.8996, 6.4752

Details

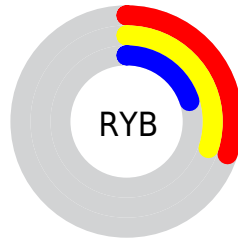
The Hex color **4C3F32** is a dark color, and the websafe version is hex **333333**. A complement of this color would be **323F4C**, and the grayscale version is **414141**.

A 20% lighter version of the original color is **7D6F60**, and **201503** is the 20% darker color. If you saturate the color by 10%, you get **4C3B2A**, and if you desaturate by 10%, it is **4C433A**.

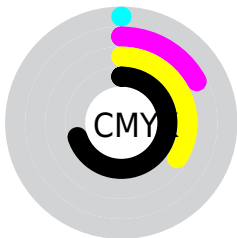
Distribution



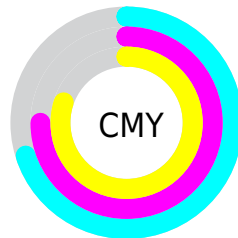
- Red (30%)
- Green (25%)
- Blue (20%)



- Red (30%)
- Yellow (30%)
- Blue (20%)



- Cyan (0%)
- Magenta (17%)
- Yellow (34%)
- Black (70%)



- Cyan (70%)
- Magenta (75%)
- Yellow (80%)

Brightness & Saturation Gradients

These gradients show how the Hex color 4C3F32 changes by changing the brightness by 10 percent. The first figure shows a shift by +10% for each color and the second figure -10%.

Similar to the brightness gradients but the following saturation gradients show a change of the Hex color 4C3F32 by changing the saturation by 10% instead.



4C3F32



4C3F32

FFFFFF



35291D



7D6F60



201503



978879



000000



B2A293



CEBDAD



EAD9C9



FFF5E5



4C3F32



4C3F32



4C3B2A



4C433A

■ 4C3723

■ 4C4741

■ 4C341B

■ 4C4A49

■ 4C3014

■ 4C4E50

■ 4C2C0C

■ 4C5258

■ 4C2804

■ 4C5660

■ 4C2600

■ 4C5A67

■ 4C5D6F

■ 4C6176

Harmonies

Analogous

The Analogous color harmony consists of three colors that are next to each other on the color wheel.



513D37



4C3F32



444231

Triad

The Triadic color harmony groups three colors that are evenly spaced from another and form a triangle on the color wheel.



4C3F32



2C4644



473E4D

Complementary

The Complementary color scheme is a pair of colors which are on the opposite of each other on the color wheel.



4C3F32



323F4C

Split Complementary

Split-complementary colors differ from the complementary color scheme. The scheme consists of three colors, the original color and two neighbors of the complement color.



3C4151



4C3F32



2B454C

Square

The Square scheme is like the rectangle color scheme, but the four colors are evenly spaced on the color wheel.



4C3F32



32463C



324350



4E3C47

Rectangle

The Rectangle color scheme consists of four colors that form a rectangle on the color wheel.



4C3F32



3E4333



324350



433F4F

Sweetspot

The Sweet Spot groups the original color and five complimentary colors.



4C3F32



635E5A



4C323F



33302D



B3B3B3



333333

Same Dimension

The Same Dimension uses a secret algorithm to generate beautiful new colors.



4C3F32



634F3B



4C4C32



262422



663300



E67300

Inverse Universe

The Inverse Universe completely reimagines the original color for something new.



323F4C



3B4F63



32324C



222426



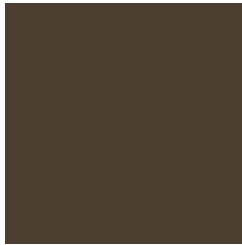
003366



0073E6

Previews

White Background



This preview shows how the Hex color 4C3F32 looks on a white background.

Color Contrast Check

Large Text (above 18pt) WCAG AA ✓ Pass

Any Text WCAG AA ✓ Pass

Large Text (above 18pt) WCAG AAA ✓ Pass

Any Text WCAG AAA ✓ Pass

Black Background



Color Contrast Check

Large Text (above 18pt) WCAG AA × Fail

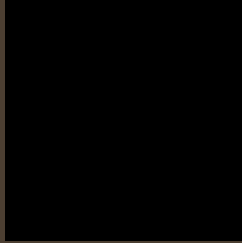
Any Text WCAG AA × Fail

Large Text (above 18pt) WCAG AAA × Fail

Any Text WCAG AAA × Fail

If you want to check with other color combinations, try the [Color Contrast Checker](#).

Hex 4C3F32 Background



This preview shows how black text looks on a background with the Hex color 4C3F32.

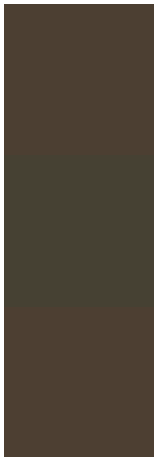


This preview shows how white text looks on a background with the Hex color 4C3F32.

Color Blindness Simulation

Color vision deficiency is a very complex topic, and I could not describe the different causes any better than Wikipedia does, so if you want to learn more, you should check out their [article about color blindness](#).

Dichromacy



Original Color
4C3F32

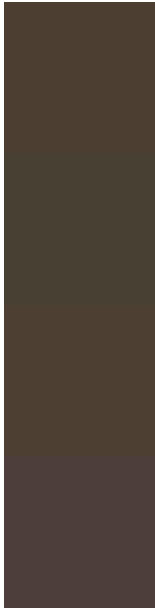
Protanopia
464133

Deuteranopia
4D3F32



Tritanopia
4E3D42

Trichromacy



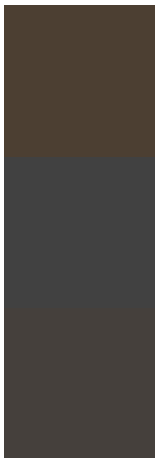
Original Color
4C3F32

Protanomaly
484033

Deuteranomaly
4D3F32

Tritanomaly
4D3E3C

Monochromacy



Original Color
4C3F32

Achromatopsia
414141

Achromatomaly
45403C

CSS Examples

Text

The CSS property to change the color of the text to Hex 4C3F32 is called "color". The color property can be set on classes, ids or directly on the HTML element.

This example shows how text in the color #4C3F32 looks like.

```
.text, #text, p{  
    color:#4C3F32  
}
```

If you want to add a text shadow in that color use the text-shadow property, you can generate a text shadow directly with our [CSS Text Shadow Generator](#).

Here you see how black text with a 4 pixel #4C3F32 colored shadow looks like.

```
.shadow{ text-shadow: 4px 4px 2px #4C3F32
}
```

Border

The CSS property to change the border of an element to Hex 4C3F32 is called "border". The border property can be set on classes, ids or directly on the HTML element.

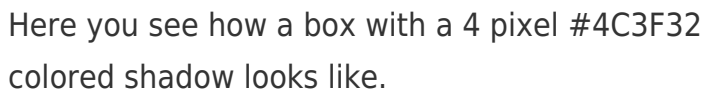
This example shows the color as border, it can be applied via the CSS property "border" or "border-color".

```
.border, #border, table{ border:4px solid
#4C3F32 }
```

If only the border color should be changed use the property `border-color`.

```
.border{ border-color:#4C3F32 }
```

If you want to add a box shadow in that color use:



Here you see how a box with a 4 pixel #4C3F32 colored shadow looks like.

```
.boxshadow{ -moz-box-shadow:4px 4px 4px  
4px #4C3F32; -webkit-box-shadow:4px 4px  
4px 4px #4C3F32; box-shadow:4px 4px 4px  
4px #4C3F32 }
```

Background

The CSS property to change the background color of an element to Hex 4C3F32 is called "background". The background property can be set on classes, ids or directly on the HTML element.

```
.background, #background, body{  
background:#4C3F32 }
```

If only the background color should be changed can be used:

```
.background{ background-color:#4C3F32 }
```

This example shows the color as background, it is applied via the CSS property "background".

To optimize and compress your CSS code, you can use our [online CSS compressor and optimizer](#) based on csstidy. If you want to create a linear or radial gradient as background or border, check our [CSS Gradient Generator](#).

Hey! You found this booklet interesting? Support Converting Colors with the new Membership Option!

The pro membership hides all ads, plus gives you double the colors in the color bucket, and more awesome pro features!

[Learn more, Memberships starting at \\$2.50/m!](#)

**Follow me
on Twitter!**

@ConvertingColor