

Converting Colors

Hex(4C4139)

Have a look what the booklet for
Hex(4C4139) contains.

Hex(4C4139)	3
<i>Conversions</i>	4
<i>Details</i>	6
<i>Harmonies</i>	11
<i>Previews</i>	23
<i>Color Blindness Simulation</i>	26
<i>CSS Examples</i>	29

Color

Hex(4C4139)

Conversions

Conversions Part 1

Format	Color
Hex	4C4139
RGB	76, 65, 57
RGB Percent	30%, 25%, 22%
CMY	0.7020, 0.7451, 0.7765
CMYK	0.00, 0.14, 0.25, 0.70
HSL	25°, 14%, 26%
HSV	25°, 25%, 30%
XYZ	5.6093, 5.6125, 4.6586
YIQ	67.3770, 9.1240, -0.1560

Conversions

Conversions Part 2

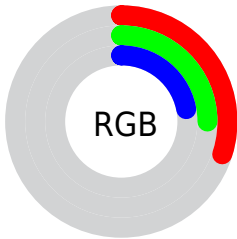
Format	Color
R_YB	76, 71, 57
Decimal	4997433
CIE Lab	28.41, 3.23, 6.62
CIE LCh	28, 7.370, 63.987
Yxy	5.6125, 0.3532, 0.3534
Android (android.graphics.Color)	4283187513 (0xFF4C4139)
YUV	67.3770, -5.1159, 7.5624
Hunter-Lab	23.6907, 0.8051, 4.9246

Details

The Hex color **4C4139** is a dark color, and the websafe version is hex **333333**. A complement of this color would be **39444C**, and the grayscale version is **434343**.

A 20% lighter version of the original color is **7D7168**, and **20170E** is the 20% darker color. If you saturate the color by 10%, you get **4C3D31**, and if you desaturate by 10%, it is **4C4541**.

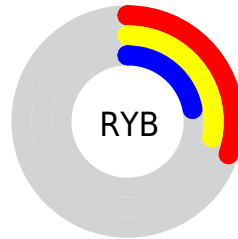
Distribution



Red (30%)

Green (25%)

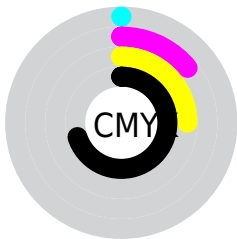
Blue (22%)



Red (30%)

Yellow (28%)

Blue (22%)

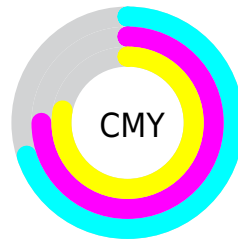


Cyan (0%)

Magenta (14%)

Yellow (25%)

Black (70%)



Cyan (70%)

Magenta (75%)

Yellow (78%)

Brightness & Saturation Gradients

These gradients show how the Hex color 4C4139 changes by changing the brightness by 10 percent. The first figure shows a shift by +10% for each color and the second figure -10%.

Similar to the brightness gradients but the following saturation gradients show a change of the Hex color 4C4139 by changing the saturation by 10% instead.



4C4139



4C4139

FFFFFF



352B23



7D7168



20170E



978A81



000000



B2A49B



CDC0B6



EADBD1



FFF8EE



4C4139



4C4139



4C3D31



4C4541

■ 4C382A

■ 4C4A48

■ 4C3422

■ 4C4E50

■ 4C2F1B

■ 4C5357

■ 4C2B13

■ 4C575F

■ 4C270B

■ 4C5B67

■ 4C2204

■ 4C606E

■ 4C2000

■ 4C6476

■ 4C697D

Harmonies

Analogous

The Analogous color harmony consists of three colors that are next to each other on the color wheel.



4F403D



4C4139



474338

Triad

The Triadic color harmony groups three colors that are evenly spaced from another and form a triangle on the color wheel.



4C4139



364644



45414C

Complementary

The Complementary color scheme is a pair of colors which are on the opposite of each other on the color wheel.



4C4139



39444C

Split Complementary

Split-complementary colors differ from the complementary color scheme. The scheme consists of three colors, the original color and two neighbors of the complement color.



3E434E



4C4139



344649

Square

The Square scheme is like the rectangle color scheme, but the four colors are evenly spaced on the color wheel.



4C4139



3A463E



38454D



4B4048

Rectangle

The Rectangle color scheme consists of four colors that form a rectangle on the color wheel.



4C4139



434439



38454D



43424D

Sweetspot

The Sweet Spot groups the original color and five complimentary colors.



4C4139



635F5B



4C3944



33302E



B3B3B3



333333

Same Dimension

The Same Dimension uses a secret algorithm to generate beautiful new colors.



4C4139



635246



4C4A39



262422



662B00



E66100

Inverse Universe

The Inverse Universe completely reimagines the original color for something new.



39444C



465763



393B4C



222526



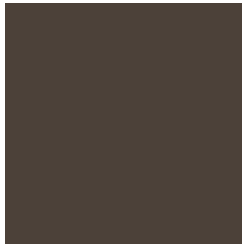
003B66



0085E6

Previews

White Background



This preview shows how the Hex color 4C4139 looks on a white background.

Color Contrast Check

Large Text (above 18pt) WCAG AA ✓ Pass

Any Text WCAG AA ✓ Pass

Large Text (above 18pt) WCAG AAA ✓ Pass

Any Text WCAG AAA ✓ Pass

Black Background



Color Contrast Check

Large Text (above 18pt) WCAG AA × Fail

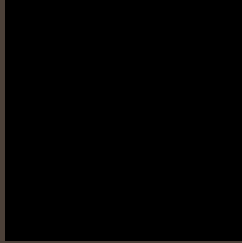
Any Text WCAG AA × Fail

Large Text (above 18pt) WCAG AAA × Fail

Any Text WCAG AAA × Fail

If you want to check with other color combinations, try the [Color Contrast Checker](#).

Hex 4C4139 Background



This preview shows how black text looks on a background with the Hex color 4C4139.

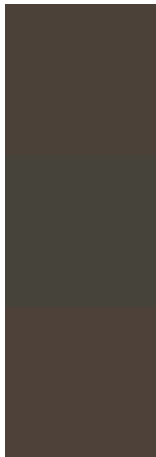


This preview shows how white text looks on a background with the Hex color 4C4139.

Color Blindness Simulation

Color vision deficiency is a very complex topic, and I could not describe the different causes any better than Wikipedia does, so if you want to learn more, you should check out their [article about color blindness](#).

Dichromacy



Original Color
4C4139

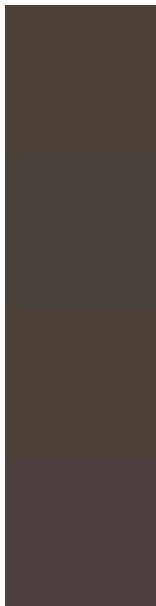
Protanopia
46433A

Deuteranopia
4D4139



Tritanopia
4D3F44

Trichromacy



Original Color

4C4139

Protanomaly

48423A

Deuteranomaly

4D4139

Tritanomaly

4D4040

Monochromacy



Original Color

4C4139

Achromatopsia

434343

Achromatomaly

46423F

CSS Examples

Text

The CSS property to change the color of the text to Hex 4C4139 is called "color". The color property can be set on classes, ids or directly on the HTML element.

This example shows how text in the color #4C4139 looks like.

```
.text, #text, p{  
    color:#4C4139  
}
```

If you want to add a text shadow in that color use the text-shadow property, you can generate a text shadow directly with our [CSS Text Shadow Generator](#).

Here you see how black text with a 4 pixel #4C4139 colored shadow looks like.

```
.shadow{ text-shadow: 4px 4px 2px #4C4139
}
```

Border

The CSS property to change the border of an element to Hex 4C4139 is called "border". The border property can be set on classes, ids or directly on the HTML element.

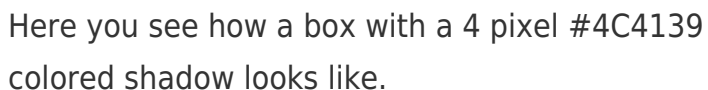
This example shows the color as border, it can be applied via the CSS property "border" or "border-color".

```
.border, #border, table{ border:4px solid
#4C4139 }
```

If only the border color should be changed use the property `border-color`.

```
.border{ border-color:#4C4139 }
```

If you want to add a box shadow in that color use:



Here you see how a box with a 4 pixel #4C4139 colored shadow looks like.

```
.boxshadow{ -moz-box-shadow:4px 4px 4px  
4px #4C4139; -webkit-box-shadow:4px 4px  
4px 4px #4C4139; box-shadow:4px 4px 4px  
4px #4C4139 }
```

Background

The CSS property to change the background color of an element to Hex 4C4139 is called "background". The background property can be set on classes, ids or directly on the HTML element.

```
.background, #background, body{  
background:#4C4139 }
```

If only the background color should be changed can be used:

```
.background{ background-color:#4C4139 }
```

This example shows the color as background, it is applied via the CSS property "background".

To optimize and compress your CSS code, you can use our [online CSS compressor and optimizer](#) based on csstidy. If you want to create a linear or radial gradient as background or border, check our [CSS Gradient Generator](#).

Hey! You found this booklet interesting? Support Converting Colors with the new Membership Option!

The pro membership hides all ads, plus gives you double the colors in the color bucket, and more awesome pro features!

[Learn more, Memberships starting at \\$2.50/m!](#)

**Follow me
on Twitter!**

@ConvertingColor