

Converting Colors

Hex(4D1C0A)

Have a look what the booklet for
Hex(4D1C0A) contains.

Hex(4D1C0A)	3
<i>Conversions</i>	4
<i>Details</i>	6
<i>Harmonies</i>	11
<i>Previews</i>	23
<i>Color Blindness Simulation</i>	26
<i>CSS Examples</i>	29

Color

Hex(4D1C0A)

Conversions

Conversions Part 1

Format	Color
Hex	4D1C0A
RGB	77, 28, 10
RGB Percent	30%, 11%, 4%
CMY	0.6980, 0.8902, 0.9608
CMYK	0.00, 0.64, 0.87, 0.70
HSL	16°, 77%, 17%
HSV	16°, 87%, 30%
XYZ	3.5306, 2.4302, 0.5702
YIQ	40.5990, 34.9820, 4.7900

Conversions

Conversions Part 2

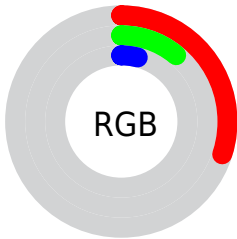
Format	Color
R_{YB}	77, 35, 10
Decimal	5053450
CIE Lab	17.60, 22.00, 22.19
CIE LCh	18, 31.249, 45.243
Yxy	2.4302, 0.5406, 0.3721
Android (android.graphics.Color)	4283243530 (0xFF4D1C0A)
YUV	40.5990, -15.0853, 31.9237
Hunter-Lab	15.5891, 13.1456, 8.7439

Details

The Hex color **4D1C0A** is a dark color, and the websafe version is hex **663333**. A complement of this color would be **0A3B4D**, and the grayscale version is **292929**.

A 20% lighter version of the original color is **824A36**, and **180001** is the 20% darker color. If you saturate the color by 10%, you get **4D1602**, and if you desaturate by 10%, it is **4D2212**.

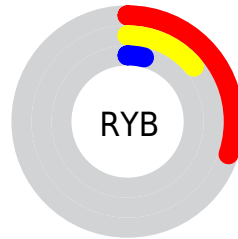
Distribution



Red (30%)

Green (11%)

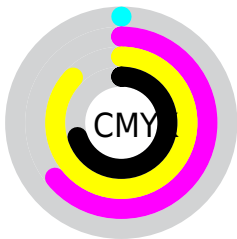
Blue (4%)



Red (30%)

Yellow (14%)

Blue (4%)

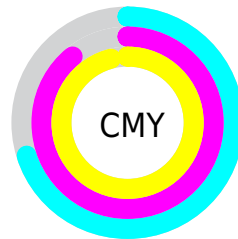


Cyan (0%)

Magenta (64%)

Yellow (87%)

Black (70%)



Cyan (70%)

Magenta (89%)

Yellow (96%)

Brightness & Saturation Gradients

These gradients show how the Hex color 4D1C0A changes by changing the brightness by 10 percent. The first figure shows a shift by +10% for each color and the second figure -10%.

Similar to the brightness gradients but the following saturation gradients show a change of the Hex color 4D1C0A by changing the saturation by 10% instead.

 4D1C0A

 4D1C0A

 FFFFEA

 340600

 824A36

 180001

 9E624D

 000000

 BA7B65

 D7957E

 F4B098

 FFCBB3

 FFE8CE

 4D1C0A

 4D1C0A

■ 4D1602

■ 4D2212

■ 4D1500

■ 4D2719

■ 4D2D21

■ 4D3329

■ 4D3831

■ 4D3E38

■ 4D4340

■ 4D4948

■ 4D4F4F

Harmonies

Analogous

The Analogous color harmony consists of three colors that are next to each other on the color wheel.



531421



4D1C0A



3F2600

Triad

The Triadic color harmony groups three colors that are evenly spaced from another and form a triangle on the color wheel.



4D1C0A



00351F



0F2A57

Complementary

The Complementary color scheme is a pair of colors which are on the opposite of each other on the color wheel.



4D1C0A



0A3B4D

Split Complementary

Split-complementary colors differ from the complementary color scheme. The scheme consists of three colors, the original color and two neighbors of the complement color.



003157



4D1C0A



003536

Square

The Square scheme is like the rectangle color scheme, but the four colors are evenly spaced on the color wheel.



4D1C0A



103207



00344B



3A204B

Rectangle

The Rectangle color scheme consists of four colors that form a rectangle on the color wheel.



4D1C0A



332B00



00344B



002D58

Sweetspot

The Sweet Spot groups the original color and five complimentary colors.



4D1C0A



63514A



4D0A3B



332723



B3B3B3



333333

Same Dimension

The Same Dimension uses a secret algorithm to generate beautiful new colors.



4D1C0A



631B00



4D3D0A



262322



661B00



E63E00

Inverse Universe

The Inverse Universe completely reimagines the original color for something new.



0A3B4D



004963



0A1A4D



222526



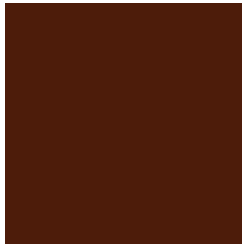
004B66



00A8E6

Previews

White Background



This preview shows how the Hex color 4D1C0A looks on a white background.

Color Contrast Check

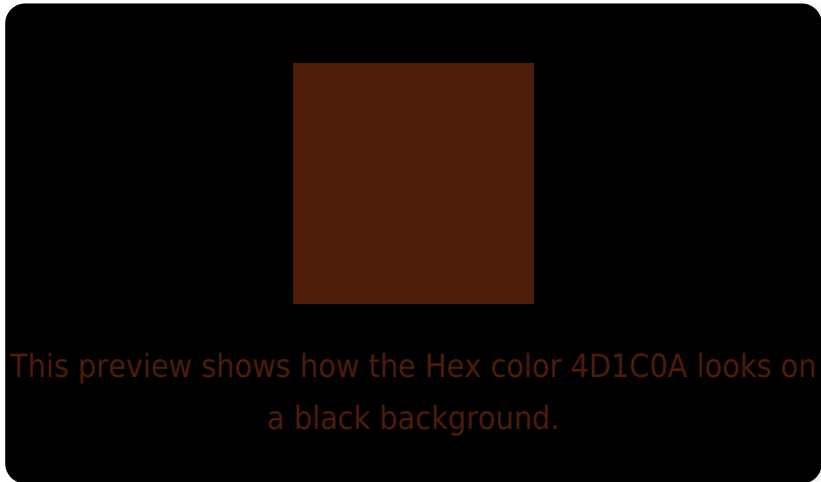
Large Text (above 18pt) WCAG AA ✓ Pass

Any Text WCAG AA ✓ Pass

Large Text (above 18pt) WCAG AAA ✓ Pass

Any Text WCAG AAA ✓ Pass

Black Background



Color Contrast Check

Large Text (above 18pt) WCAG AA × Fail

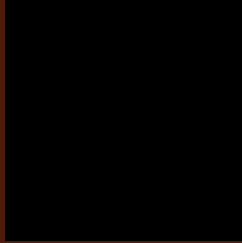
Any Text WCAG AA × Fail

Large Text (above 18pt) WCAG AAA × Fail

Any Text WCAG AAA × Fail

If you want to check with other color combinations, try the [Color Contrast Checker](#).

Hex 4D1C0A Background



This preview shows how black text looks on a background with the Hex color 4D1C0A.

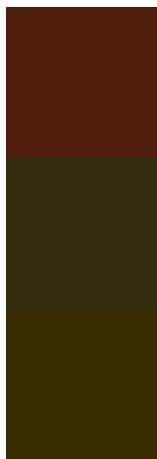


This preview shows how white text looks on a background with the Hex color 4D1C0A.

Color Blindness Simulation

Color vision deficiency is a very complex topic, and I could not describe the different causes any better than Wikipedia does, so if you want to learn more, you should check out their [article about color blindness](#).

Dichromacy



Original Color
4D1C0A

Protanopia
322D0E

Deuteranopia
382A00



Tritanopia
4E1A1C

Trichromacy



Original Color
4D1C0A

Protanomaly
3C270D

Deuteranomaly
402504

Tritanomaly
4E1B15

Monochromacy



Original Color
4D1C0A

Achromatopsia
292929

Achromatomaly
36241E

CSS Examples

Text

The CSS property to change the color of the text to Hex 4D1C0A is called "color". The color property can be set on classes, ids or directly on the HTML element.

This example shows how text in the color #4D1C0A looks like.

```
.text, #text, p{  
    color:#4D1C0A  
}
```

If you want to add a text shadow in that color use the text-shadow property, you can generate a text shadow directly with our [CSS Text Shadow Generator](#).

Here you see how black text with a 4 pixel #4D1C0A colored shadow looks like.

```
.shadow{ text-shadow: 4px 4px 2px #4D1C0A
}
```

Border

The CSS property to change the border of an element to Hex 4D1C0A is called "border". The border property can be set on classes, ids or directly on the HTML element.

This example shows the color as border, it can be applied via the CSS property "border" or "border-color".

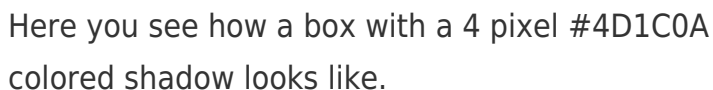
```
.border, #border, table{ border:4px solid
#4D1C0A }
```

If only the border color should be changed use the property `border-color`.

```
.border{ border-color:#4D1C0A }
```

If you want to add a box shadow in that color use:

Here you see how a box with a 4 pixel #4D1C0A colored shadow looks like.



```
.boxshadow{ -moz-box-shadow:4px 4px 4px  
4px #4D1C0A; -webkit-box-shadow:4px 4px  
4px 4px #4D1C0A; box-shadow:4px 4px 4px  
4px #4D1C0A }
```

Background

The CSS property to change the background color of an element to Hex 4D1C0A is called "background". The background property can be set on classes, ids or directly on the HTML element.

```
.background, #background, body{  
background:#4D1C0A }
```

If only the background color should be changed can be used:

```
.background{ background-color:#4D1C0A }
```

This example shows the color as background, it is applied via the CSS property "background".

To optimize and compress your CSS code, you can use our [online CSS compressor and optimizer](#) based on csstidy. If you want to create a linear or radial gradient as background or border, check our [CSS Gradient Generator](#).

Hey! You found this booklet
interesting? Support Converting
Colors with the new Membership
Option!

The pro membership hides all ads, plus gives you
double the colors in the color bucket, and more
awesome pro features!

[Learn more, Memberships starting at \\$2.50/m!](#)

**Follow me
on Twitter!**

@ConvertingColor