

# Converting Colors

Hex(4D2117)

Have a look what the booklet for  
Hex(4D2117) contains.

<b>Hex(4D2117)</b> .....	3
<b><i>Conversions</i></b> .....	4
<b><i>Details</i></b> .....	6
<b><i>Harmonies</i></b> .....	11
<b><i>Previews</i></b> .....	23
<b><i>Color Blindness Simulation</i></b> .....	26
<b><i>CSS Examples</i></b> .....	29

**Color**

**Hex(4D2117)**

# Conversions

## Conversions Part 1

Format	Color
Hex	4D2117
RGB	77, 33, 23
RGB Percent	30%, 13%, 9%
CMY	0.6980, 0.8706, 0.9098
CMYK	0.00, 0.57, 0.70, 0.70
HSL	11°, 54%, 20%
HSV	11°, 70%, 30%
XYZ	3.7591, 2.7274, 1.1389
YIQ	45.0160, 29.4340, 6.2180

# Conversions

## Conversions Part 2

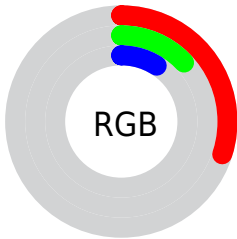
<b>Format</b>	<b>Color</b>
<b>R<sub>YB</sub></b>	77, 35, 23
Decimal	5054743
CIE <sub>Lab</sub>	18.92, 19.85, 16.46
CIE <sub>LCh</sub>	19, 25.787, 39.672
Yxy	2.7274, 0.4930, 0.3577
Android (android.graphics.Color)	4283244823 (0xFF4D2117)
YUV	45.0160, -10.8539, 28.0500
Hunter-Lab	16.5147, 11.7294, 7.4714

# Details

The Hex color **4D2117** is a dark color, and the websafe version is hex **663333**. A complement of this color would be **17434D**, and the grayscale version is **2D2D2D**.

A 20% lighter version of the original color is **814F42**, and **1D0001** is the 20% darker color. If you saturate the color by 10%, you get **4D1B0F**, and if you desaturate by 10%, it is **4D271F**.

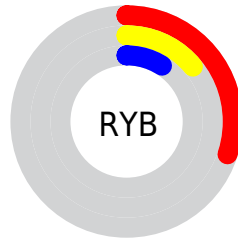
# Distribution



 Red (30%)

 Green (13%)

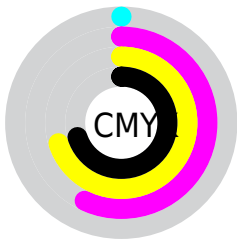
 Blue (9%)



 Red (30%)

 Yellow (14%)

 Blue (9%)

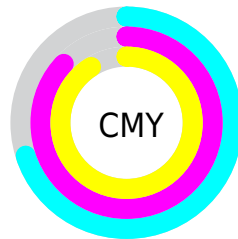


 Cyan (0%)

 Magenta (57%)

 Yellow (70%)

 Black (70%)



 Cyan (70%)

 Magenta (87%)

 Yellow (91%)

# Brightness & Saturation Gradients

These gradients show how the Hex color 4D2117 changes by changing the brightness by 10 percent. The first figure shows a shift by +10% for each color and the second figure -10%.

Similar to the brightness gradients but the following saturation gradients show a change of the Hex color 4D2117 by changing the saturation by 10% instead.



 4D2117

 4D2117

 FFFFF9

 350B00

 814F42

 1D0001

 9C6759

 000000

 B88072

 D59A8B

 F2B5A6

 FFD1C1

 FFEDDD

 4D2117

 4D2117

■ 4D1B0F

■ 4D271F

■ 4D1408

■ 4D2E26

■ 4D0E00

■ 4D342E

■ 4D3A36

■ 4D403E

■ 4D4745

■ 4D4D4D

■ 4D5355

■ 4D595C

# Harmonies

## Analogous

The Analogous color harmony consists of three colors that are next to each other on the color wheel.



501D29



4D2117



422808

# Triad

The Triadic color harmony groups three colors that are evenly spaced from another and form a triangle on the color wheel.



4D2117



003620



142E53

# Complementary

The Complementary color scheme is a pair of colors which are on the opposite of each other on the color wheel.



4D2117



17434D

# Split Complementary

Split-complementary colors differ from the complementary color scheme. The scheme consists of three colors, the original color and two neighbors of the complement color.



003351



4D2117



003734

# Square

The Square scheme is like the rectangle color scheme, but the four colors are evenly spaced on the color wheel.



4D2117



1E340F



003645



37264B

# Rectangle

The Rectangle color scheme consists of four colors that form a rectangle on the color wheel.



4D2117



382D03



003645



003053



# Sweetspot

The Sweet Spot groups the original color and five complimentary colors.



4D2117



63524F



4D1743



332926



B3B3B3



333333



# Same Dimension

The Same Dimension uses a secret algorithm to generate beautiful new colors.



4D2117



631F10



4D3C17



262322



661300



E62B00



# Inverse Universe

The Inverse Universe completely reimagines the original color for something new.



17434D



105463



17284D



222626



005366

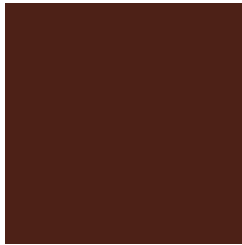


00BBE6



# Previews

## White Background



This preview shows how the Hex color 4D2117 looks on a white background.

## Color Contrast Check

Large Text (above 18pt) WCAG AA ✓ Pass

Any Text WCAG AA ✓ Pass

Large Text (above 18pt) WCAG AAA ✓ Pass

Any Text WCAG AAA ✓ Pass

# Black Background



## Color Contrast Check

Large Text (above 18pt) WCAG AA × Fail

Any Text WCAG AA × Fail

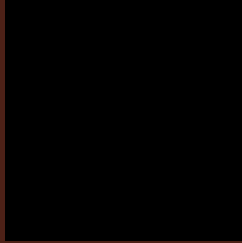
Large Text (above 18pt) WCAG AAA × Fail

Any Text WCAG AAA × Fail

If you want to check with other color combinations, try the [Color Contrast Checker](#).



## Hex 4D2117 Background



This preview shows how black text looks on a background with the Hex color 4D2117.

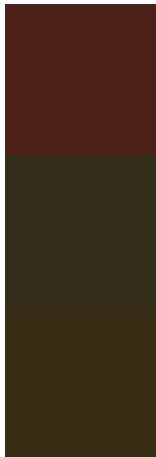


This preview shows how white text looks on a background with the Hex color 4D2117.

# Color Blindness Simulation

Color vision deficiency is a very complex topic, and I could not describe the different causes any better than Wikipedia does, so if you want to learn more, you should check out their [article about color blindness](#).

## Dichromacy



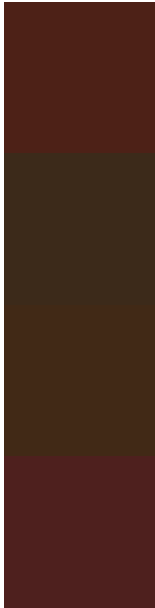
**Original Color**  
4D2117

**Protanopia**  
332F1C

**Deuteranopia**  
3A2D15



# Trichromacy



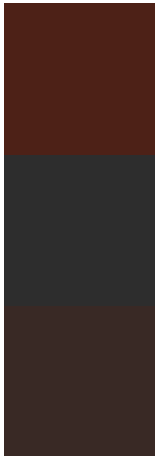
**Original Color**  
4D2117

**Protanomaly**  
3C2A1A

**Deuteranomaly**  
412916

**Tritanomaly**  
4E201E

# Monochromacy



**Original Color**  
4D2117

**Achromatopsia**  
2D2D2D

**Achromatomaly**  
392925

# CSS Examples

## Text

The CSS property to change the color of the text to Hex 4D2117 is called "color". The color property can be set on classes, ids or directly on the HTML element.

This example shows how text in the color #4D2117 looks like.

```
.text, #text, p{  
    color:#4D2117  
}
```

If you want to add a text shadow in that color use the text-shadow property, you can generate a text shadow directly with our [CSS Text Shadow Generator](#).

Here you see how black text with a 4 pixel #4D2117 colored shadow looks like.

```
.shadow{ text-shadow: 4px 4px 2px #4D2117
}
```

## Border

The CSS property to change the border of an element to Hex 4D2117 is called "border". The border property can be set on classes, ids or directly on the HTML element.

This example shows the color as border, it can be applied via the CSS property "border" or "border-color".

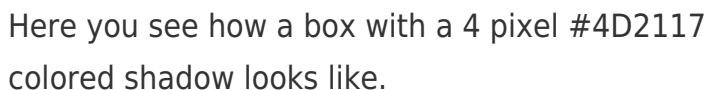
```
.border, #border, table{ border:4px solid
#4D2117 }
```

If only the border color should be changed use the property `border-color`.

```
.border{ border-color:#4D2117 }
```

If you want to add a box shadow in that color use:

Here you see how a box with a 4 pixel #4D2117 colored shadow looks like.



```
.boxshadow{ -moz-box-shadow:4px 4px 4px  
4px #4D2117; -webkit-box-shadow:4px 4px  
4px 4px #4D2117; box-shadow:4px 4px 4px  
4px #4D2117 }
```

# Background

The CSS property to change the background color of an element to Hex 4D2117 is called "background". The background property can be set on classes, ids or directly on the HTML element.

```
.background, #background, body{  
background:#4D2117 }
```

If only the background color should be changed can be used:

```
.background{ background-color:#4D2117 }
```

This example shows the color as background, it is applied via the CSS property "background".

To optimize and compress your CSS code, you can use our [online CSS compressor and optimizer](#) based on csstidy. If you want to create a linear or radial gradient as background or border, check our [CSS Gradient Generator](#).



Hey! You found this booklet interesting? Support Converting Colors with the new Membership Option!

The pro membership hides all ads, plus gives you double the colors in the color bucket, and more awesome pro features!

**[Learn more, Memberships starting at \\$2.50/m!](#)**

**Follow me  
on Twitter!**

@ConvertingColor