

Converting Colors

Hex(4D2628)

Have a look what the booklet for
Hex(4D2628) contains.

Hex(4D2628)	3
<i>Conversions</i>	4
<i>Details</i>	6
<i>Harmonies</i>	11
<i>Previews</i>	23
<i>Color Blindness Simulation</i>	26
<i>CSS Examples</i>	29

Color

Hex(4D2628)

Conversions

Conversions Part 1

Format	Color
Hex	4D2628
RGB	77, 38, 40
RGB Percent	30%, 15%, 16%
CMY	0.6980, 0.8510, 0.8431
CMYK	0.00, 0.51, 0.48, 0.70
HSL	357°, 34%, 23%
HSV	357°, 51%, 30%
XYZ	4.1367, 3.1172, 2.3911
YIQ	49.8890, 22.6020, 8.8900

Conversions

Conversions Part 2

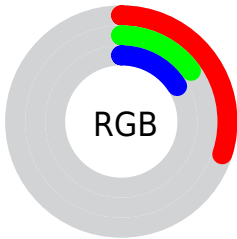
Format	Color
R_{YB}	77, 38, 40
Decimal	5056040
CIE Lab	20.51, 18.52, 6.94
CIE LCh	21, 19.774, 20.535
Yxy	3.1172, 0.4289, 0.3232
Android (android.graphics.Color)	4283246120 (0xFF4D2628)
YUV	49.8890, -4.8753, 23.7763
Hunter-Lab	17.6556, 10.9249, 4.3292

Details

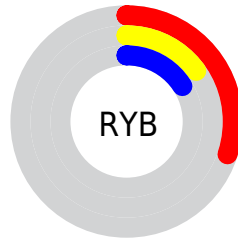
The Hex color **4D2628** is a dark color, and the websafe version is hex **663333**. A complement of this color would be **264D4B**, and the grayscale version is **323232**.

A 20% lighter version of the original color is **805455**, and **210001** is the 20% darker color. If you saturate the color by 10%, you get **4D1E21**, and if you desaturate by 10%, it is **4D2E2F**.

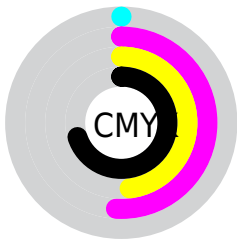
Distribution



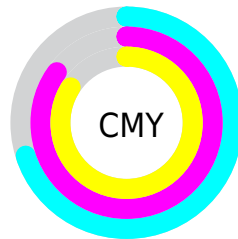
- Red (30%)
- Green (15%)
- Blue (16%)



- Red (30%)
- Yellow (15%)
- Blue (16%)



- Cyan (0%)
- Magenta (51%)
- Yellow (48%)
- Black (70%)



- Cyan (70%)
- Magenta (85%)
- Yellow (84%)

Brightness & Saturation Gradients

These gradients show how the Hex color 4D2628 changes by changing the brightness by 10 percent. The first figure shows a shift by +10% for each color and the second figure -10%.

Similar to the brightness gradients but the following saturation gradients show a change of the Hex color 4D2628 by changing the saturation by 10% instead.



4D2628



4D2628

FFFFFF



351114



805455



210001



9B6C6D



000000



B68686



D2A0A1



EFBBBC



FFD7D7



FFF4F4



4D2628



4D2628

■ 4D1E21

■ 4D2E2F

■ 4D1719

■ 4D3537

■ 4D0F12

■ 4D3D3E

■ 4D070B

■ 4D4545

■ 4D0004

■ 4D4D4D

■ 4D5454

■ 4D5C5B

■ 4D6462

■ 4D6B6A

Harmonies

Analogous

The Analogous color harmony consists of three colors that are next to each other on the color wheel.



4A2637



4D2628



482A1C

Triad

The Triadic color harmony groups three colors that are evenly spaced from another and form a triangle on the color wheel.



4D2628



20371E



0E344E

Complementary

The Complementary color scheme is a pair of colors which are on the opposite of each other on the color wheel.



4D2628



264D4B

Split Complementary

Split-complementary colors differ from the complementary color scheme. The scheme consists of three colors, the original color and two neighbors of the complement color.



003747



4D2628



07392C

Square

The Square scheme is like the rectangle color scheme, but the four colors are evenly spaced on the color wheel.



4D2628



303415



00393B



2C2F4D

Rectangle

The Rectangle color scheme consists of four colors that form a rectangle on the color wheel.



4D2628



422D16



00393B



00364C

Sweetspot

The Sweet Spot groups the original color and five complimentary colors.



4D2628



635555



4A264D



332A2A



B3B3B3



333333

Same Dimension

The Same Dimension uses a secret algorithm to generate beautiful new colors.



4D2628



63272A



4D3726



262223



660005



E6000C

Inverse Universe

The Inverse Universe completely reimagines the original color for something new.



4D2628



63272A



263C4D



262223



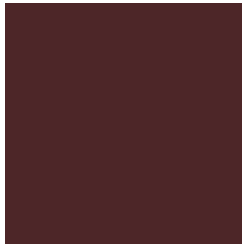
660005



E6000C

Previews

White Background



This preview shows how the Hex color 4D2628 looks on a white background.

Color Contrast Check

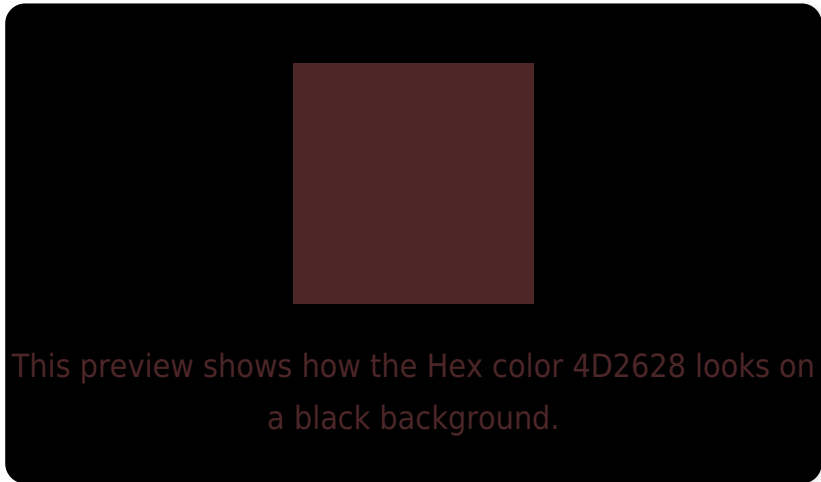
Large Text (above 18pt) WCAG AA ✓ Pass

Any Text WCAG AA ✓ Pass

Large Text (above 18pt) WCAG AAA ✓ Pass

Any Text WCAG AAA ✓ Pass

Black Background



Color Contrast Check

Large Text (above 18pt) WCAG AA × Fail

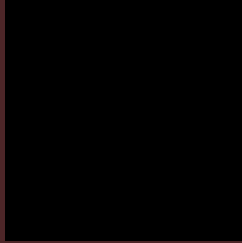
Any Text WCAG AA × Fail

Large Text (above 18pt) WCAG AAA × Fail

Any Text WCAG AAA × Fail

If you want to check with other color combinations, try the [Color Contrast Checker](#).

Hex 4D2628 Background



This preview shows how black text looks on a background with the Hex color 4D2628.



This preview shows how white text looks on a background with the Hex color 4D2628.

Color Blindness Simulation

Color vision deficiency is a very complex topic, and I could not describe the different causes any better than Wikipedia does, so if you want to learn more, you should check out their [article about color blindness](#).

Dichromacy



Original Color
4D2628

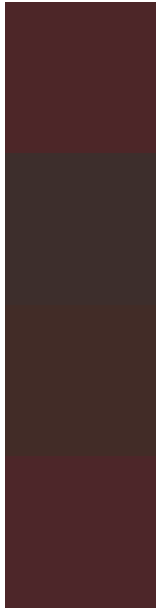
Protanopia
34322E

Deuteranopia
3B3026



Tritanopia
4D2629

Trichromacy



Original Color
4D2628

Protanomaly
3D2E2C

Deuteranomaly
422C27

Tritanomaly
4D2629

Monochromacy



Original Color
4D2628

Achromatopsia
323232

Achromatomaly
3C2E2E

CSS Examples

Text

The CSS property to change the color of the text to Hex 4D2628 is called "color". The color property can be set on classes, ids or directly on the HTML element.

This example shows how text in the color #4D2628 looks like.

```
.text, #text, p{  
    color:#4D2628  
}
```

If you want to add a text shadow in that color use the text-shadow property, you can generate a text shadow directly with our [CSS Text Shadow Generator](#).

Here you see how black text with a 4 pixel #4D2628 colored shadow looks like.

```
.shadow{ text-shadow: 4px 4px 2px #4D2628
}
```

Border

The CSS property to change the border of an element to Hex 4D2628 is called "border". The border property can be set on classes, ids or directly on the HTML element.

This example shows the color as border, it can be applied via the CSS property "border" or "border-color".

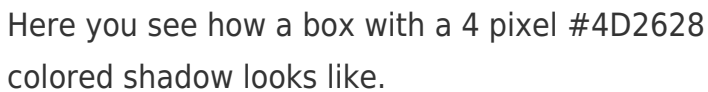
```
.border, #border, table{ border:4px solid
#4D2628 }
```

If only the border color should be changed use the property `border-color`.

```
.border{ border-color:#4D2628 }
```

If you want to add a box shadow in that color use:

Here you see how a box with a 4 pixel #4D2628 colored shadow looks like.

A rectangular box with a dark red border and a dark red shadow. The shadow is visible on the right and bottom edges of the box.

```
.boxshadow{ -moz-box-shadow:4px 4px 4px  
4px #4D2628; -webkit-box-shadow:4px 4px  
4px 4px #4D2628; box-shadow:4px 4px 4px  
4px #4D2628 }
```

Background

The CSS property to change the background color of an element to Hex 4D2628 is called "background". The background property can be set on classes, ids or directly on the HTML element.

```
.background, #background, body{  
background:#4D2628 }
```

If only the background color should be changed can be used:

```
.background{ background-color:#4D2628 }
```

This example shows the color as background, it is applied via the CSS property "background".

To optimize and compress your CSS code, you can use our [online CSS compressor and optimizer](#) based on csstidy. If you want to create a linear or radial gradient as background or border, check our [CSS Gradient Generator](#).

Hey! You found this booklet interesting? Support Converting Colors with the new Membership Option!

The pro membership hides all ads, plus gives you double the colors in the color bucket, and more awesome pro features!

[Learn more, Memberships starting at \\$2.50/m!](#)

**Follow me
on Twitter!**

@ConvertingColor