

Converting Colors

Hex(4D2B2E)

Have a look what the booklet for
Hex(4D2B2E) contains.

Hex(4D2B2E)	3
<i>Conversions</i>	4
<i>Details</i>	6
<i>Harmonies</i>	11
<i>Previews</i>	23
<i>Color Blindness Simulation</i>	26
<i>CSS Examples</i>	29

Color

Hex(4D2B2E)

Conversions

Conversions Part 1

Format	Color
Hex	4D2B2E
RGB	77, 43, 46
RGB Percent	30%, 17%, 18%
CMY	0.6980, 0.8314, 0.8196
CMYK	0.00, 0.44, 0.40, 0.70
HSL	355°, 28%, 24%
HSV	355°, 44%, 30%
XYZ	4.4176, 3.5028, 3.0280
YIQ	53.5080, 19.3010, 8.1410

Conversions

Conversions Part 2

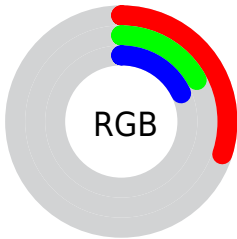
Format	Color
RYB	77, 43, 46
Decimal	5057326
CIELab	21.95, 16.17, 4.84
CIElCh	22, 16.884, 16.675
Yxy	3.5028, 0.4035, 0.3199
Android (android.graphics.Color)	4283247406 (0xFF4D2B2E)
YUV	53.5080, -3.7014, 20.6025
Hunter-Lab	18.7157, 9.3798, 3.5084

Details

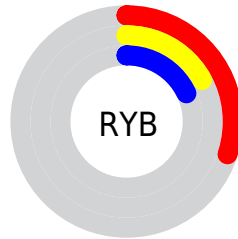
The Hex color **4D2B2E** is a dark color, and the websafe version is hex **663333**. A complement of this color would be **2B4D4A**, and the grayscale version is **363636**.

A 20% lighter version of the original color is **7F595C**, and **220000** is the 20% darker color. If you saturate the color by 10%, you get **4D2327**, and if you desaturate by 10%, it is **4D3335**.

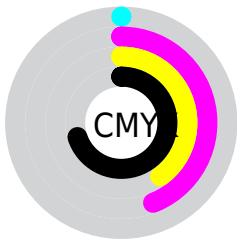
Distribution



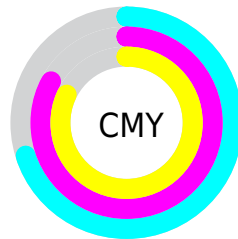
- Red (30%)
- Green (17%)
- Blue (18%)



- Red (30%)
- Yellow (17%)
- Blue (18%)



- Cyan (0%)
- Magenta (44%)
- Yellow (40%)
- Black (70%)



- Cyan (70%)
- Magenta (83%)
- Yellow (82%)

Brightness & Saturation Gradients

These gradients show how the Hex color 4D2B2E changes by changing the brightness by 10 percent. The first figure shows a shift by +10% for each color and the second figure -10%.

Similar to the brightness gradients but the following saturation gradients show a change of the Hex color 4D2B2E by changing the saturation by 10% instead.



4D2B2E



4D2B2E

FFFFFF



351619



7F595C



220000



9A7274



000000



B58B8E



D1A6A8



EDC1C3



FFDDDF



FFFAFC



4D2B2E



4D2B2E

■ 4D2327

■ 4D3335

■ 4D1C20

■ 4D3A3C

■ 4D1419

■ 4D4243

■ 4D0C12

■ 4D4A4A

■ 4D050B

■ 4D5251

■ 4D0007

■ 4D5958

■ 4D615F

■ 4D6966

■ 4D706D

Harmonies

Analogous

The Analogous color harmony consists of three colors that are next to each other on the color wheel.



492B3B



4D2B2E



4A2E23

Triad

The Triadic color harmony groups three colors that are evenly spaced from another and form a triangle on the color wheel.



4D2B2E



283923



18374D

Complementary

The Complementary color scheme is a pair of colors which are on the opposite of each other on the color wheel.



4D2B2E



2B4D4A

Split Complementary

Split-complementary colors differ from the complementary color scheme. The scheme consists of three colors, the original color and two neighbors of the complement color.



033A46



4D2B2E



183B2E

Square

The Square scheme is like the rectangle color scheme, but the four colors are evenly spaced on the color wheel.



4D2B2E



36361C



053B3B



2E334C

Rectangle

The Rectangle color scheme consists of four colors that form a rectangle on the color wheel.



4D2B2E



45301E



053B3B



10394B

Sweetspot

The Sweet Spot groups the original color and five complimentary colors.



4D2B2E



635758



4A2B4D



332B2C



B3B3B3



333333

Same Dimension

The Same Dimension uses a secret algorithm to generate beautiful new colors.



4D2B2E



632F33



4D392B



262223



660009



E60014

Inverse Universe

The Inverse Universe completely reimagines the original color for something new.



4D2B2E



632F33



2B3F4D



262223



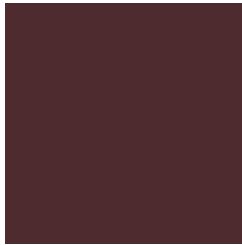
660009



E60014

Previews

White Background



This preview shows how the Hex color 4D2B2E looks on a white background.

Color Contrast Check

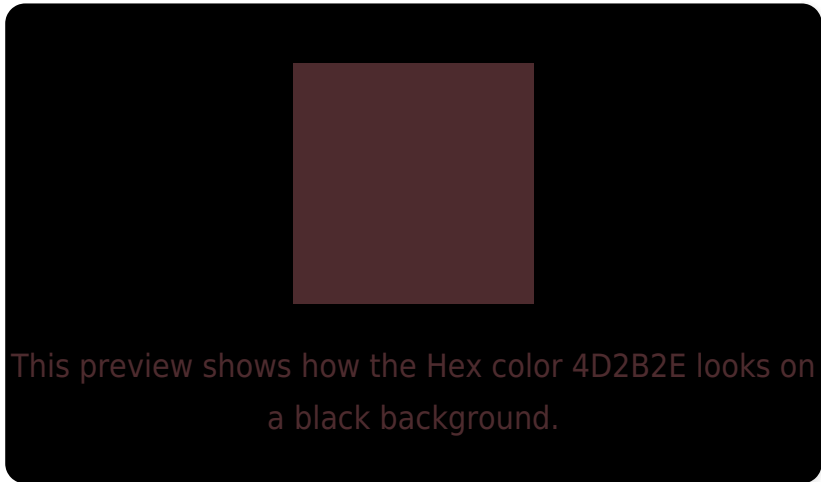
Large Text (above 18pt) WCAG AA ✓ Pass

Any Text WCAG AA ✓ Pass

Large Text (above 18pt) WCAG AAA ✓ Pass

Any Text WCAG AAA ✓ Pass

Black Background



Color Contrast Check

Large Text (above 18pt) WCAG AA × Fail

Any Text WCAG AA × Fail

Large Text (above 18pt) WCAG AAA × Fail

Any Text WCAG AAA × Fail

If you want to check with other color combinations, try the [Color Contrast Checker](#).

Hex 4D2B2E Background



This preview shows how black text looks on a background with the Hex color 4D2B2E.

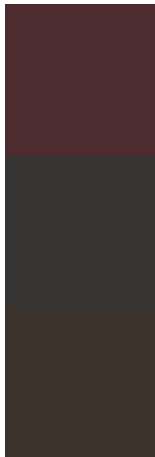


This preview shows how white text looks on a background with the Hex color 4D2B2E.

Color Blindness Simulation

Color vision deficiency is a very complex topic, and I could not describe the different causes any better than Wikipedia does, so if you want to learn more, you should check out their [article about color blindness](#).

Dichromacy



Original Color
4D2B2E

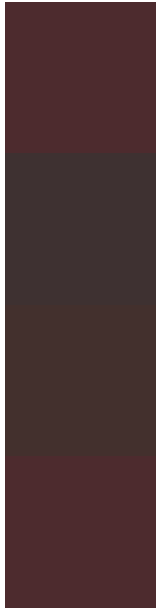
Protanopia
363533

Deuteranopia
3D332D



Tritanopia
4D2B2E

Trichromacy



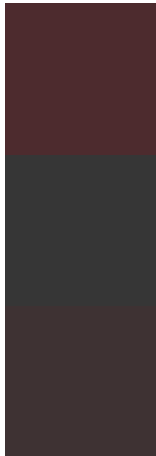
Original Color
4D2B2E

Protanomaly
3E3131

Deuteranomaly
43302D

Tritanomaly
4D2B2E

Monochromacy



Original Color
4D2B2E

Achromatopsia
363636

Achromatomaly
3E3233

CSS Examples

Text

The CSS property to change the color of the text to Hex 4D2B2E is called "color". The color property can be set on classes, ids or directly on the HTML element.

This example shows how text in the color #4D2B2E looks like.

```
.text, #text, p{  
    color:#4D2B2E  
}
```

If you want to add a text shadow in that color use the text-shadow property, you can generate a text shadow directly with our [CSS Text Shadow Generator](#).

Here you see how black text with a 4 pixel #4D2B2E colored shadow looks like.

```
.shadow{ text-shadow: 4px 4px 2px #4D2B2E
}
```

Border

The CSS property to change the border of an element to Hex 4D2B2E is called "border". The border property can be set on classes, ids or directly on the HTML element.

This example shows the color as border, it can be applied via the CSS property "border" or "border-color".

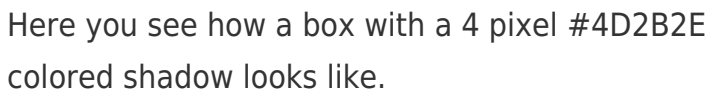
```
.border, #border, table{ border:4px solid
#4D2B2E }
```

If only the border color should be changed use the property `border-color`.

```
.border{ border-color:#4D2B2E }
```

If you want to add a box shadow in that color use:

Here you see how a box with a 4 pixel #4D2B2E colored shadow looks like.



```
.boxshadow{ -moz-box-shadow:4px 4px 4px  
4px #4D2B2E; -webkit-box-shadow:4px 4px  
4px 4px #4D2B2E; box-shadow:4px 4px 4px  
4px #4D2B2E }
```

Background

The CSS property to change the background color of an element to Hex 4D2B2E is called "background". The background property can be set on classes, ids or directly on the HTML element.

```
.background, #background, body{  
background:#4D2B2E }
```

If only the background color should be changed can be used:

```
.background{ background-color:#4D2B2E }
```

This example shows the color as background, it is applied via the CSS property "background".

To optimize and compress your CSS code, you can use our [online CSS compressor and optimizer](#) based on csstidy. If you want to create a linear or radial gradient as background or border, check our [CSS Gradient Generator](#).

Hey! You found this booklet interesting? Support Converting Colors with the new Membership Option!

The pro membership hides all ads, plus gives you double the colors in the color bucket, and more awesome pro features!

[Learn more, Memberships starting at \\$2.50/m!](#)

**Follow me
on Twitter!**

@ConvertingColor