

Converting Colors

Hex(4D3944)

Have a look what the booklet for
Hex(4D3944) contains.

Hex(4D3944)	3
<i>Conversions</i>	4
<i>Details</i>	6
<i>Harmonies</i>	11
<i>Previews</i>	23
<i>Color Blindness Simulation</i>	26
<i>CSS Examples</i>	29

Color

Hex(4D3944)

Conversions

Conversions Part 1

Format	Color
Hex	4D3944
RGB	77, 57, 68
RGB Percent	30%, 22%, 27%
CMY	0.6980, 0.7765, 0.7333
CMYK	0.00, 0.26, 0.12, 0.70
HSL	327°, 15%, 26%
HSV	327°, 26%, 30%
XYZ	5.5671, 4.9214, 6.1253
YIQ	64.2340, 8.3890, 7.6610

Conversions

Conversions Part 2

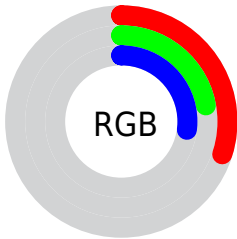
Format	Color
R_{YB}	77, 57, 68
Decimal	5060932
CIE _{Lab}	26.51, 10.95, -3.34
CIE _{LCh}	27, 11.445, 343.026
Yxy	4.9214, 0.3351, 0.2962
Android (android.graphics.Color)	4283251012 (0xFF4D3944)
YUV	64.2340, 1.8566, 11.1958
Hunter-Lab	22.1842, 5.9719, -0.8418

Details

The Hex color **4D3944** is a dark color, and the websafe version is hex **333333**. A complement of this color would be **394D42**, and the grayscale version is **404040**.

A 20% lighter version of the original color is **7E6874**, and **210F19** is the 20% darker color. If you saturate the color by 10%, you get **4D3141**, and if you desaturate by 10%, it is **4D4147**.

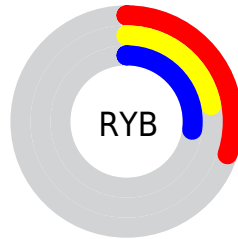
Distribution



Red (30%)

Green (22%)

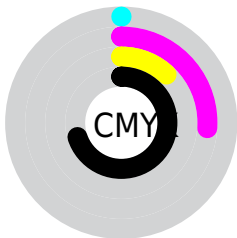
Blue (27%)



Red (30%)

Yellow (22%)

Blue (27%)

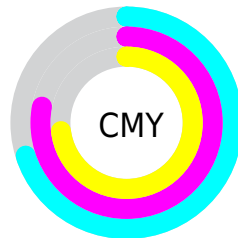


Cyan (0%)

Magenta (26%)

Yellow (12%)

Black (70%)



Cyan (70%)

Magenta (78%)

Yellow (73%)

Brightness & Saturation Gradients

These gradients show how the Hex color 4D3944 changes by changing the brightness by 10 percent. The first figure shows a shift by +10% for each color and the second figure -10%.

Similar to the brightness gradients but the following saturation gradients show a change of the Hex color 4D3944 by changing the saturation by 10% instead.



4D3944



4D3944

FFFFFF



36232E



7E6874



210F19



98818E



000000



B39BA8



CFB6C3



EBD2DF



FFEEFC



4D3944



4D3944



4D3141



4D4147

■ 4D2A3D

■ 4D484B

■ 4D223A

■ 4D504E

■ 4D1A36

■ 4D5852

■ 4D1333

■ 4D6055

■ 4D0B2F

■ 4D6759

■ 4D032C

■ 4D6F5C

■ 4D002A

■ 4D7760

■ 4D7E63

Harmonies

Analogous

The Analogous color harmony consists of three colors that are next to each other on the color wheel.



453B4B



4D3944



51383B

Triad

The Triadic color harmony groups three colors that are evenly spaced from another and form a triangle on the color wheel.



4D3944



413F2E



27434A

Complementary

The Complementary color scheme is a pair of colors which are on the opposite of each other on the color wheel.



4D3944



394D42

Split Complementary

Split-complementary colors differ from the complementary color scheme. The scheme consists of three colors, the original color and two neighbors of the complement color.



274442



4D3944



374232

Square

The Square scheme is like the rectangle color scheme, but the four colors are evenly spaced on the color wheel.



4D3944



4A3C2E



2E4339



2E414F

Rectangle

The Rectangle color scheme consists of four colors that form a rectangle on the color wheel.



4D3944



503936



2E4339



264348

Sweetspot

The Sweet Spot groups the original color and five complimentary colors.



4D3944



635B60



42394D



332E31



B3B3B3



333333

Same Dimension

The Same Dimension uses a secret algorithm to generate beautiful new colors.



4D3944



634556



4D393A



262225



660038



E6007E

Inverse Universe

The Inverse Universe completely reimagines the original color for something new.



4D3944



634556



394D4C



262225



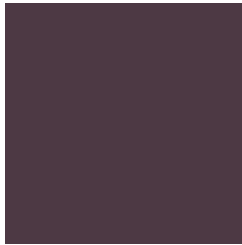
660038



E6007E

Previews

White Background



This preview shows how the Hex color 4D3944 looks on a white background.

Color Contrast Check

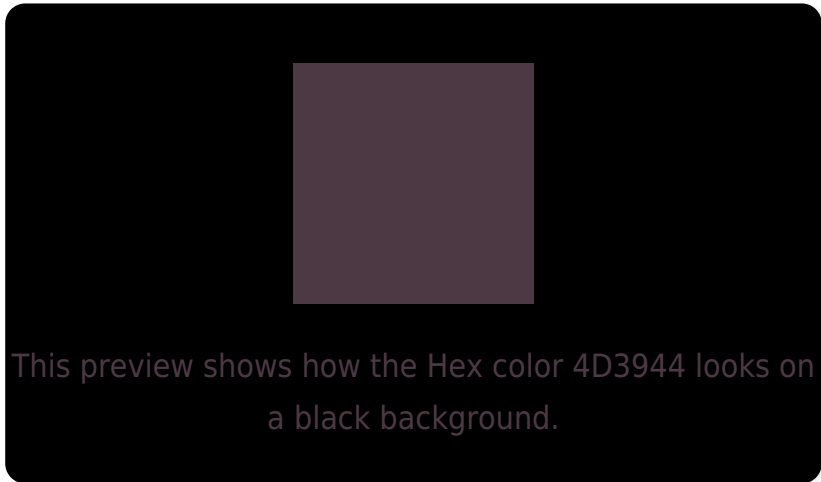
Large Text (above 18pt) WCAG AA ✓ Pass

Any Text WCAG AA ✓ Pass

Large Text (above 18pt) WCAG AAA ✓ Pass

Any Text WCAG AAA ✓ Pass

Black Background



Color Contrast Check

Large Text (above 18pt) WCAG AA × Fail

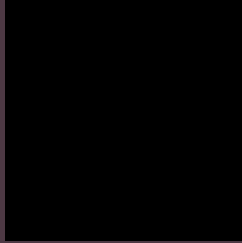
Any Text WCAG AA × Fail

Large Text (above 18pt) WCAG AAA × Fail

Any Text WCAG AAA × Fail

If you want to check with other color combinations, try the [Color Contrast Checker](#).

Hex 4D3944 Background



This preview shows how black text looks on a background with the Hex color 4D3944.



This preview shows how white text looks on a background with the Hex color 4D3944.

Color Blindness Simulation

Color vision deficiency is a very complex topic, and I could not describe the different causes any better than Wikipedia does, so if you want to learn more, you should check out their [article about color blindness](#).

Dichromacy



Original Color
4D3944

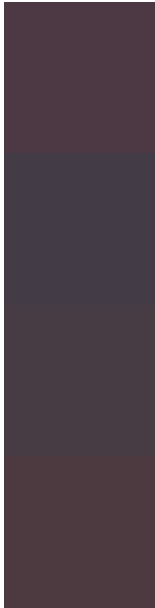
Protanopia
3D3E47

Deuteranopia
433D43



Tritanopia
4C3A3E

Trichromacy



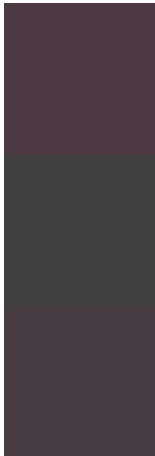
Original Color
4D3944

Protanomaly
433C46

Deuteranomaly
473C43

Tritanomaly
4C3A40

Monochromacy



Original Color
4D3944

Achromatopsia
404040

Achromatomaly
453D41

CSS Examples

Text

The CSS property to change the color of the text to Hex 4D3944 is called "color". The color property can be set on classes, ids or directly on the HTML element.

This example shows how text in the color #4D3944 looks like.

```
.text, #text, p{  
    color:#4D3944  
}
```

If you want to add a text shadow in that color use the text-shadow property, you can generate a text shadow directly with our [CSS Text Shadow Generator](#).

Here you see how black text with a 4 pixel #4D3944 colored shadow looks like.

```
.shadow{ text-shadow: 4px 4px 2px #4D3944
}
```

Border

The CSS property to change the border of an element to Hex 4D3944 is called "border". The border property can be set on classes, ids or directly on the HTML element.

This example shows the color as border, it can be applied via the CSS property "border" or "border-color".

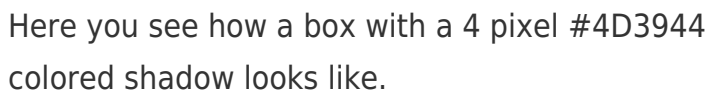
```
.border, #border, table{ border:4px solid
#4D3944 }
```

If only the border color should be changed use the property `border-color`.

```
.border{ border-color:#4D3944 }
```

If you want to add a box shadow in that color use:

Here you see how a box with a 4 pixel #4D3944 colored shadow looks like.



```
.boxshadow{ -moz-box-shadow:4px 4px 4px  
4px #4D3944; -webkit-box-shadow:4px 4px  
4px 4px #4D3944; box-shadow:4px 4px 4px  
4px #4D3944 }
```

Background

The CSS property to change the background color of an element to Hex 4D3944 is called "background". The background property can be set on classes, ids or directly on the HTML element.

```
.background, #background, body{  
background:#4D3944 }
```

If only the background color should be changed can be used:

```
.background{ background-color:#4D3944 }
```

This example shows the color as background, it is applied via the CSS property "background".

To optimize and compress your CSS code, you can use our [online CSS compressor and optimizer](#) based on csstidy. If you want to create a linear or radial gradient as background or border, check our [CSS Gradient Generator](#).

Hey! You found this booklet interesting? Support Converting Colors with the new Membership Option!

The pro membership hides all ads, plus gives you double the colors in the color bucket, and more awesome pro features!

[Learn more, Memberships starting at \\$2.50/m!](#)

**Follow me
on Twitter!**

@ConvertingColor