

# Converting Colors

Hex(4D3A3F)

Have a look what the booklet for  
Hex(4D3A3F) contains.

<b>Hex(4D3A3F)</b> .....	3
<b><i>Conversions</i></b> .....	4
<b><i>Details</i></b> .....	6
<b><i>Harmonies</i></b> .....	11
<b><i>Previews</i></b> .....	23
<b><i>Color Blindness Simulation</i></b> .....	26
<b><i>CSS Examples</i></b> .....	29

# Color

Hex(4D3A3F)

# Conversions

## Conversions Part 1

<b>Format</b>	<b>Color</b>
Hex	4D3A3F
RGB	77, 58, 63
RGB Percent	30%, 23%, 25%
CMY	0.6980, 0.7725, 0.7529
CMYK	0.00, 0.25, 0.18, 0.70
HSL	344°, 14%, 26%
HSV	344°, 25%, 30%
XYZ	5.4708, 4.9628, 5.3722
YIQ	64.2510, 9.7190, 5.5830

# Conversions

## Conversions Part 2

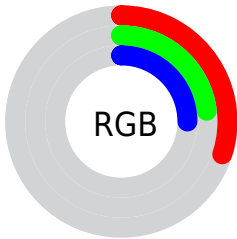
<b>Format</b>	<b>Color</b>
<b>RYB</b>	77, 58, 63
Decimal	5061183
CIELab	26.63, 9.31, 0.14
CIELCh	27, 9.310, 0.879
Yxy	4.9628, 0.3461, 0.3140
Android (android.graphics.Color)	4283251263 (0xFF4D3A3F)
YUV	64.2510, -0.6167, 11.1809
Hunter-Lab	22.2773, 4.8506, 1.2962

# Details

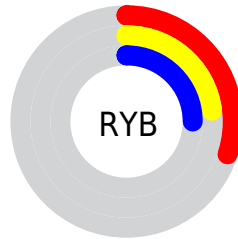
The Hex color **4D3A3F** is a dark color, and the websafe version is hex **333333**. A complement of this color would be **3A4D48**, and the grayscale version is **404040**.

A 20% lighter version of the original color is **7E696F**, and **211015** is the 20% darker color. If you saturate the color by 10%, you get **4D3239**, and if you desaturate by 10%, it is **4D4245**.

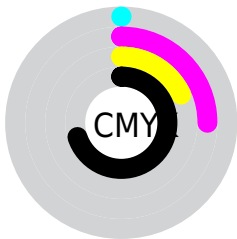
# Distribution



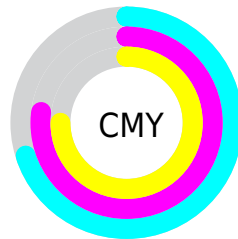
- Red (30%)
- Green (23%)
- Blue (25%)



- Red (30%)
- Yellow (23%)
- Blue (25%)



- Cyan (0%)
- Magenta (25%)
- Yellow (18%)
- Black (70%)



- Cyan (70%)
- Magenta (77%)
- Yellow (75%)

# Brightness & Saturation Gradients

These gradients show how the Hex color 4D3A3F changes by changing the brightness by 10 percent. The first figure shows a shift by +10% for each color and the second figure -10%.

Similar to the brightness gradients but the following saturation gradients show a change of the Hex color 4D3A3F by changing the saturation by 10% instead.





4D3A3F



4D3A3F

FFFFFF



362429



7E696F



211015



988288



000000



B39CA2



CFB7BD



EBD3D9



FFEFF5



4D3A3F



4D3A3F



4D3239



4D4245

■ 4D2B34

■ 4D494A

■ 4D232E

■ 4D5150

■ 4D1B28

■ 4D5956

■ 4D1423

■ 4D615B

■ 4D0C1D

■ 4D6861

■ 4D0417

■ 4D7067

■ 4D0014

■ 4D786C

■ 4D7F72

# Harmonies

## Analogous

The Analogous color harmony consists of three colors that are next to each other on the color wheel.



483B46



4D3A3F



4E3A38

# Triad

The Triadic color harmony groups three colors that are evenly spaced from another and form a triangle on the color wheel.



4D3A3F



3C4133



2F424B

# Complementary

The Complementary color scheme is a pair of colors which are on the opposite of each other on the color wheel.



4D3A3F



3A4D48

# Split Complementary

Split-complementary colors differ from the complementary color scheme. The scheme consists of three colors, the original color and two neighbors of the complement color.



2C4346



4D3A3F



344238

# Square

The Square scheme is like the rectangle color scheme, but the four colors are evenly spaced on the color wheel.



4D3A3F



443F31



2E433F



37404D

# Rectangle

The Rectangle color scheme consists of four colors that form a rectangle on the color wheel.



4D3A3F



4C3C34



2E433F



2D424A



# Sweetspot

The Sweet Spot groups the original color and five complimentary colors.



4D3A3F



635C5E



483A4D



332F30



B3B3B3



333333



# Same Dimension

The Same Dimension uses a secret algorithm to generate beautiful new colors.



4D3A3F



63464D



4D3E3A



262223



66001B



E6003C



# Inverse Universe

The Inverse Universe completely reimagines the original color for something new.



4D3A3F



63464D



3A494D



262223



66001B

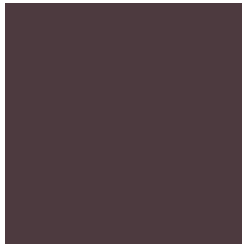


E6003C



# Previews

## White Background



This preview shows how the Hex color 4D3A3F looks on a white background.

## Color Contrast Check

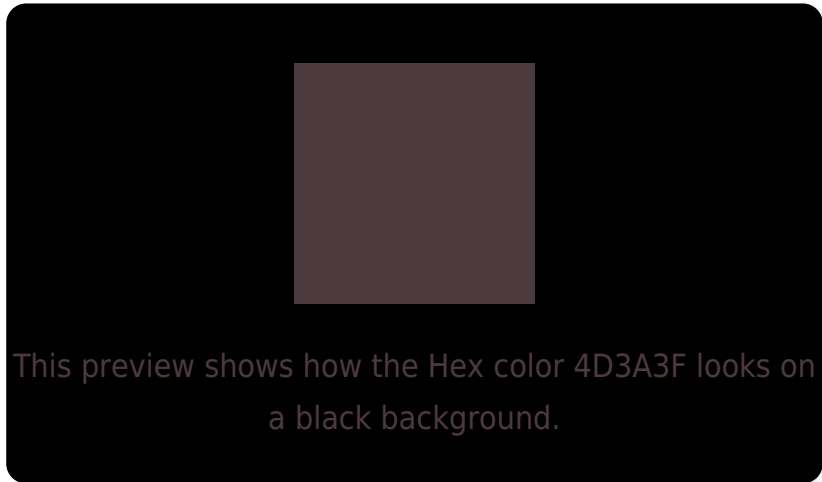
Large Text (above 18pt) WCAG AA ✓ Pass

Any Text WCAG AA ✓ Pass

Large Text (above 18pt) WCAG AAA ✓ Pass

Any Text WCAG AAA ✓ Pass

# Black Background



## Color Contrast Check

Large Text (above 18pt) WCAG AA × Fail

Any Text WCAG AA × Fail

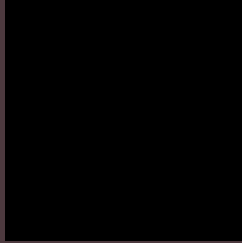
Large Text (above 18pt) WCAG AAA × Fail

Any Text WCAG AAA × Fail

If you want to check with other color combinations, try the [Color Contrast Checker](#).



## Hex 4D3A3F Background



This preview shows how black text looks on a background with the Hex color 4D3A3F.

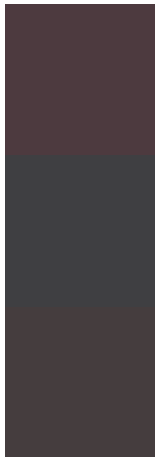


This preview shows how white text looks on a background with the Hex color 4D3A3F.

# Color Blindness Simulation

Color vision deficiency is a very complex topic, and I could not describe the different causes any better than Wikipedia does, so if you want to learn more, you should check out their [article about color blindness](#).

## Dichromacy



**Original Color**  
4D3A3F

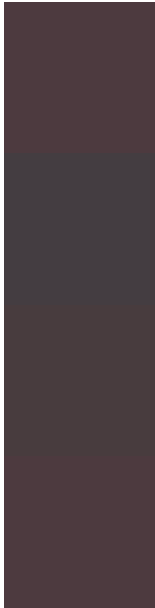
**Protanopia**  
3F3F42

**Deuteranopia**  
453D3E



**Tritanopia**  
4D3A3F

# Trichromacy



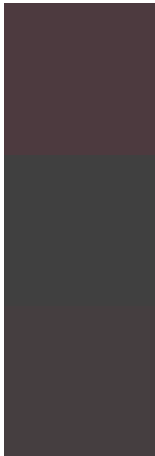
**Original Color**  
4D3A3F

**Protanomaly**  
443D41

**Deuteranomaly**  
483C3E

**Tritanomaly**  
4D3A3F

# Monochromacy



**Original Color**  
4D3A3F

**Achromatopsia**  
404040

**Achromatomaly**  
453E40

# CSS Examples

## Text

The CSS property to change the color of the text to Hex 4D3A3F is called "color". The color property can be set on classes, ids or directly on the HTML element.

This example shows how text in the color #4D3A3F looks like.

```
.text, #text, p{  
    color:#4D3A3F  
}
```

If you want to add a text shadow in that color use the text-shadow property, you can generate a text shadow directly with our [CSS Text Shadow Generator](#).

Here you see how black text with a 4 pixel #4D3A3F colored shadow looks like.

```
.shadow{ text-shadow: 4px 4px 2px #4D3A3F
}
```

## Border

The CSS property to change the border of an element to Hex 4D3A3F is called "border". The border property can be set on classes, ids or directly on the HTML element.

This example shows the color as border, it can be applied via the CSS property "border" or "border-color".

```
.border, #border, table{ border:4px solid
#4D3A3F }
```

If only the border color should be changed use the property `border-color`.

```
.border{ border-color:#4D3A3F }
```

If you want to add a box shadow in that color use:

Here you see how a box with a 4 pixel #4D3A3F colored shadow looks like.

```
.boxshadow{ -moz-box-shadow:4px 4px 4px  
4px #4D3A3F; -webkit-box-shadow:4px 4px  
4px 4px #4D3A3F; box-shadow:4px 4px 4px  
4px #4D3A3F }
```

# Background

The CSS property to change the background color of an element to Hex 4D3A3F is called "background". The background property can be set on classes, ids or directly on the HTML element.

```
.background, #background, body{  
background:#4D3A3F }
```

If only the background color should be changed can be used:

```
.background{ background-color:#4D3A3F }
```

This example shows the color as background, it is applied via the CSS property "background".

To optimize and compress your CSS code, you can use our [online CSS compressor and optimizer](#) based on csstidy. If you want to create a linear or radial gradient as background or border, check our [CSS Gradient Generator](#).



Hey! You found this booklet interesting? Support Converting Colors with the new Membership Option!

The pro membership hides all ads, plus gives you double the colors in the color bucket, and more awesome pro features!

**[Learn more, Memberships starting at \\$2.50/m!](#)**

**Follow me  
on Twitter!**

@ConvertingColor