

Converting Colors

Hex(4D3E2C)

Have a look what the booklet for
Hex(4D3E2C) contains.

Hex(4D3E2C)	3
<i>Conversions</i>	4
<i>Details</i>	6
<i>Harmonies</i>	11
<i>Previews</i>	23
<i>Color Blindness Simulation</i>	26
<i>CSS Examples</i>	29

Color

Hex(4D3E2C)

Conversions

Conversions Part 1

Format	Color
Hex	4D3E2C
RGB	77, 62, 44
RGB Percent	30%, 24%, 17%
CMY	0.6980, 0.7569, 0.8275
CMYK	0.00, 0.19, 0.43, 0.70
HSL	33°, 27%, 24%
HSV	33°, 43%, 30%
XYZ	5.2378, 5.2049, 3.1115
YIQ	64.4330, 14.7180, -2.4180

Conversions

Conversions Part 2

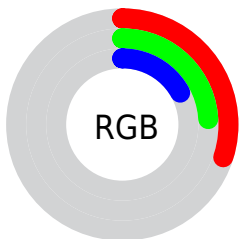
Format	Color
R_{YB}	72, 77, 44
Decimal	5062188
CIE _{Lab}	27.31, 3.59, 13.53
CIE _{LCh}	27, 13.996, 75.147
Yxy	5.2049, 0.3864, 0.3840
Android (android.graphics.Color)	4283252268 (0xFF4D3E2C)
YUV	64.4330, -10.0735, 11.0213
Hunter-Lab	22.8142, 1.0562, 7.8838

Details

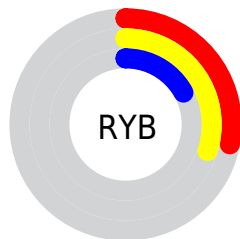
The Hex color **4D3E2C** is a dark color, and the websafe version is hex **333333**. A complement of this color would be **2C3B4D**, and the grayscale version is **414141**.

A 20% lighter version of the original color is **7F6D5A**, and **211400** is the 20% darker color. If you saturate the color by 10%, you get **4D3B24**, and if you desaturate by 10%, it is **4D4234**.

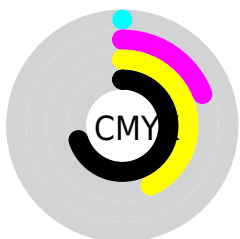
Distribution



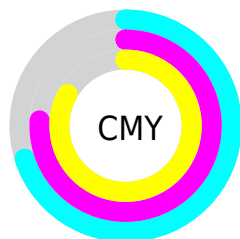
- Red (30%)
- Green (24%)
- Blue (17%)



- Red (28%)
- Yellow (30%)
- Blue (17%)



- Cyan (0%)
- Magenta (19%)
- Yellow (43%)
- Black (70%)



- Cyan (70%)
- Magenta (76%)
- Yellow (83%)

Brightness & Saturation Gradients

These gradients show how the Hex color 4D3E2C changes by changing the brightness by 10 percent. The first figure shows a shift by +10% for each color and the second figure -10%.

Similar to the brightness gradients but the following saturation gradients show a change of the Hex color 4D3E2C by changing the saturation by 10% instead.

 4D3E2C

 4D3E2C

FFFFFF

 362817

 7F6D5A

 211400

 998772

 000000

 B4A18C

 D0BCA6

 ECD8C1

 FFF4DD

 FFFFFA

 4D3E2C

 4D3E2C

■ 4D3B24

■ 4D4234

■ 4D371D

■ 4D453B

■ 4D3315

■ 4D4943

■ 4D300D

■ 4D4C4B

■ 4D2D05

■ 4D5052

■ 4D2A00

■ 4D535A

■ 4D5662

■ 4D5A6A

■ 4D5E71

Harmonies

Analogous

The Analogous color harmony consists of three colors that are next to each other on the color wheel.



543B32



4D3E2C



43422C

Triad

The Triadic color harmony groups three colors that are evenly spaced from another and form a triangle on the color wheel.



4D3E2C



214646



493C50

Complementary

The Complementary color scheme is a pair of colors which are on the opposite of each other on the color wheel.



4D3E2C



2C3B4D

Split Complementary

Split-complementary colors differ from the complementary color scheme. The scheme consists of three colors, the original color and two neighbors of the complement color.



3B4055



4D3E2C



21454F

Square

The Square scheme is like the rectangle color scheme, but the four colors are evenly spaced on the color wheel.



4D3E2C



2A463B



2C4355



523946

Rectangle

The Rectangle color scheme consists of four colors that form a rectangle on the color wheel.



4D3E2C



3B442F



2C4355



443D52

Sweetspot

The Sweet Spot groups the original color and five complimentary colors.



4D3E2C



635E57



4D2C3B



332F2B



B3B3B3



333333

Same Dimension

The Same Dimension uses a secret algorithm to generate beautiful new colors.



4D3E2C



634C31



4C4D2C



262522



663800



E67D00

Inverse Universe

The Inverse Universe completely reimagines the original color for something new.



2C3B4D



314863



2D2C4D



222426



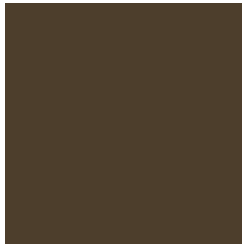
002E66



0068E6

Previews

White Background



This preview shows how the Hex color 4D3E2C looks on a white background.

Color Contrast Check

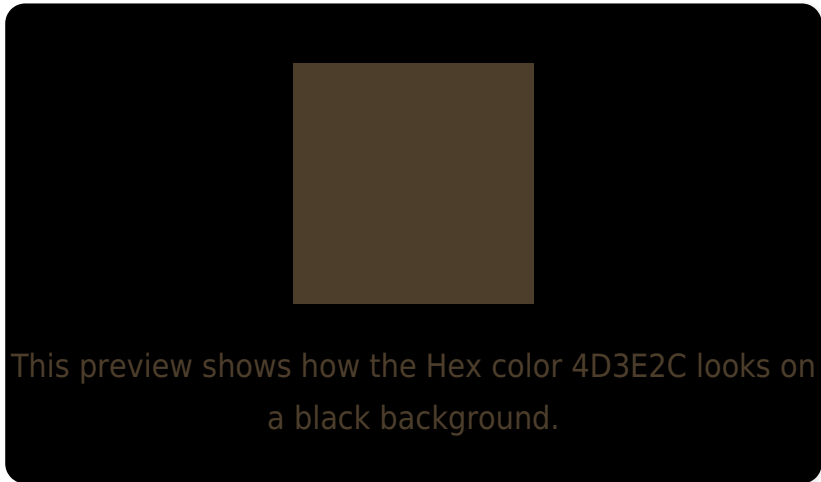
Large Text (above 18pt) WCAG AA ✓ Pass

Any Text WCAG AA ✓ Pass

Large Text (above 18pt) WCAG AAA ✓ Pass

Any Text WCAG AAA ✓ Pass

Black Background



Color Contrast Check

Large Text (above 18pt) WCAG AA × Fail

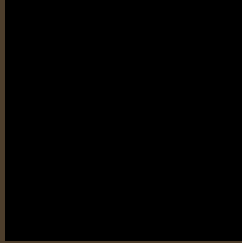
Any Text WCAG AA × Fail

Large Text (above 18pt) WCAG AAA × Fail

Any Text WCAG AAA × Fail

If you want to check with other color combinations, try the [Color Contrast Checker](#).

Hex 4D3E2C Background



This preview shows how black text looks on a background with the Hex color 4D3E2C.

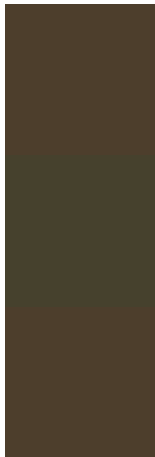


This preview shows how white text looks on a background with the Hex color 4D3E2C.

Color Blindness Simulation

Color vision deficiency is a very complex topic, and I could not describe the different causes any better than Wikipedia does, so if you want to learn more, you should check out their [article about color blindness](#).

Dichromacy



Original Color
4D3E2C

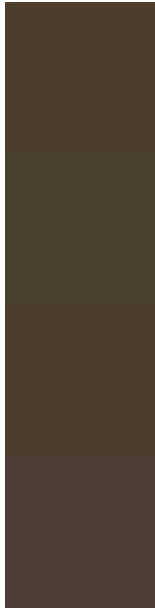
Protanopia
46412D

Deuteranopia
4D3E2C



Tritanopia
4F3B40

Trichromacy



Original Color
4D3E2C

Protanomaly
49402D

Deuteranomaly
4D3E2C

Tritanomaly
4E3C39

Monochromacy



Original Color
4D3E2C

Achromatopsia
404040

Achromatomaly
453F39

CSS Examples

Text

The CSS property to change the color of the text to Hex 4D3E2C is called "color". The color property can be set on classes, ids or directly on the HTML element.

This example shows how text in the color #4D3E2C looks like.

```
.text, #text, p{  
    color:#4D3E2C  
}
```

If you want to add a text shadow in that color use the text-shadow property, you can generate a text shadow directly with our [CSS Text Shadow Generator](#).

Here you see how black text with a 4 pixel #4D3E2C colored shadow looks like.

```
.shadow{ text-shadow: 4px 4px 2px #4D3E2C
}
```

Border

The CSS property to change the border of an element to Hex 4D3E2C is called "border". The border property can be set on classes, ids or directly on the HTML element.

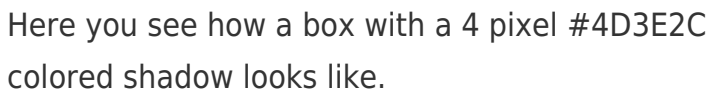
This example shows the color as border, it can be applied via the CSS property "border" or "border-color".

```
.border, #border, table{ border:4px solid
#4D3E2C }
```

If only the border color should be changed use the property `border-color`.

```
.border{ border-color:#4D3E2C }
```

If you want to add a box shadow in that color use:



Here you see how a box with a 4 pixel #4D3E2C colored shadow looks like.

```
.boxshadow{ -moz-box-shadow:4px 4px 4px  
4px #4D3E2C; -webkit-box-shadow:4px 4px  
4px 4px #4D3E2C; box-shadow:4px 4px 4px  
4px #4D3E2C }
```

Background

The CSS property to change the background color of an element to Hex 4D3E2C is called "background". The background property can be set on classes, ids or directly on the HTML element.

```
.background, #background, body{  
background:#4D3E2C }
```

If only the background color should be changed can be used:

```
.background{ background-color:#4D3E2C }
```

This example shows the color as background, it is applied via the CSS property "background".

To optimize and compress your CSS code, you can use our [online CSS compressor and optimizer](#) based on csstidy. If you want to create a linear or radial gradient as background or border, check our [CSS Gradient Generator](#).

Hey! You found this booklet interesting? Support Converting Colors with the new Membership Option!

The pro membership hides all ads, plus gives you double the colors in the color bucket, and more awesome pro features!

[Learn more, Memberships starting at \\$2.50/m!](#)

**Follow me
on Twitter!**

@ConvertingColor