

Converting Colors

Hex(4D3F36)

Have a look what the booklet for
Hex(4D3F36) contains.

Hex(4D3F36)	3
<i>Conversions</i>	4
<i>Details</i>	6
<i>Harmonies</i>	11
<i>Previews</i>	23
<i>Color Blindness Simulation</i>	26
<i>CSS Examples</i>	29

Color

Hex(4D3F36)

Conversions

Conversions Part 1

Format	Color
Hex	4D3F36
RGB	77, 63, 54
RGB Percent	30%, 25%, 21%
CMY	0.6980, 0.7529, 0.7882
CMYK	0.00, 0.18, 0.30, 0.70
HSL	23°, 18%, 26%
HSV	23°, 30%, 30%
XYZ	5.5039, 5.3991, 4.2421
YIQ	66.1600, 11.2330, 0.1690

Conversions

Conversions Part 2

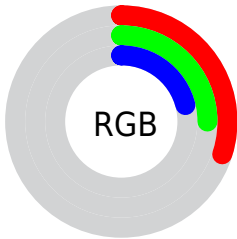
Format	Color
RYB	77, 69, 54
Decimal	5062454
CIELab	27.84, 4.46, 7.79
CIELCh	28, 8.978, 60.193
Yxy	5.3991, 0.3634, 0.3565
Android (android.graphics.Color)	4283252534 (0xFF4D3F36)
YUV	66.1600, -5.9949, 9.5067
Hunter-Lab	23.2360, 1.6183, 5.4410

Details

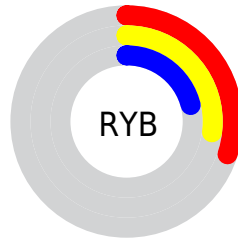
The Hex color **4D3F36** is a dark color, and the websafe version is hex **333333**. A complement of this color would be **36444D**, and the grayscale version is **424242**.

A 20% lighter version of the original color is **7E6F65**, and **21150A** is the 20% darker color. If you saturate the color by 10%, you get **4D3A2E**, and if you desaturate by 10%, it is **4D443E**.

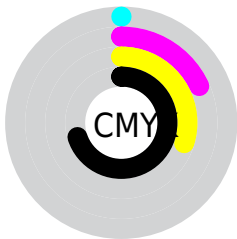
Distribution



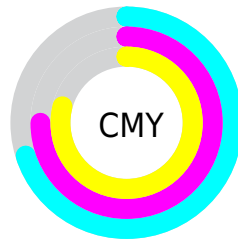
- Red (30%)
- Green (25%)
- Blue (21%)



- Red (30%)
- Yellow (27%)
- Blue (21%)



- Cyan (0%)
- Magenta (18%)
- Yellow (30%)
- Black (70%)



- Cyan (70%)
- Magenta (75%)
- Yellow (79%)

Brightness & Saturation Gradients

These gradients show how the Hex color 4D3F36 changes by changing the brightness by 10 percent. The first figure shows a shift by +10% for each color and the second figure -10%.

Similar to the brightness gradients but the following saturation gradients show a change of the Hex color 4D3F36 by changing the saturation by 10% instead.

■ 4D3F36

■ 4D3F36

FFFFFF

■ 362921

■ 7E6F65

■ 21150A

■ 98887E

■ 000000

■ B3A298

■ CFBDB2

■ EBD9CE

■ FFF5EA

■ 4D3F36

■ 4D3F36

■ 4D3A2E

■ 4D443E

■ 4D3627

■ 4D4845

■ 4D311F

■ 4D4D4D

■ 4D2C17

■ 4D5255

■ 4D2810

■ 4D565D

■ 4D2308

■ 4D5B64

■ 4D1E00

■ 4D606C

■ 4D6474

■ 4D697B

Harmonies

Analogous

The Analogous color harmony consists of three colors that are next to each other on the color wheel.



503D3B



4D3F36



474134

Triad

The Triadic color harmony groups three colors that are evenly spaced from another and form a triangle on the color wheel.



4D3F36



324642



43404E

Complementary

The Complementary color scheme is a pair of colors which are on the opposite of each other on the color wheel.



4D3F36



36444D

Split Complementary

Split-complementary colors differ from the complementary color scheme. The scheme consists of three colors, the original color and two neighbors of the complement color.



3A424F



4D3F36



2F4548

Square

The Square scheme is like the rectangle color scheme, but the four colors are evenly spaced on the color wheel.



4D3F36



38453B



32444D



4B3E49

Rectangle

The Rectangle color scheme consists of four colors that form a rectangle on the color wheel.



4D3F36



424335



32444D



40414F

Sweetspot

The Sweet Spot groups the original color and five complimentary colors.



4D3F36



635E5A



4D3644



33302D



B3B3B3



333333

Same Dimension

The Same Dimension uses a secret algorithm to generate beautiful new colors.



4D3F36



634E40



4D4A36



262422



662800



E65A00

Inverse Universe

The Inverse Universe completely reimagines the original color for something new.



36444D



405563



36394D



222526



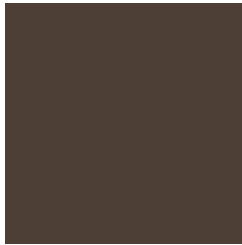
003E66



008CE6

Previews

White Background



This preview shows how the Hex color 4D3F36 looks on a white background.

Color Contrast Check

Large Text (above 18pt) WCAG AA ✓ Pass

Any Text WCAG AA ✓ Pass

Large Text (above 18pt) WCAG AAA ✓ Pass

Any Text WCAG AAA ✓ Pass

Black Background



Color Contrast Check

Large Text (above 18pt) WCAG AA × Fail

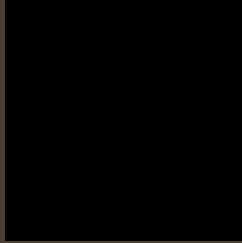
Any Text WCAG AA × Fail

Large Text (above 18pt) WCAG AAA × Fail

Any Text WCAG AAA × Fail

If you want to check with other color combinations, try the [Color Contrast Checker](#).

Hex 4D3F36 Background



This preview shows how black text looks on a background with the Hex color 4D3F36.

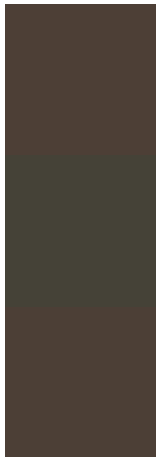


This preview shows how white text looks on a background with the Hex color 4D3F36.

Color Blindness Simulation

Color vision deficiency is a very complex topic, and I could not describe the different causes any better than Wikipedia does, so if you want to learn more, you should check out their [article about color blindness](#).

Dichromacy



Original Color
4D3F36

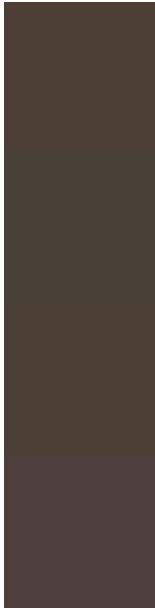
Protanopia
454237

Deuteranopia
4C3F36



Tritanopia
4E3D42

Trichromacy



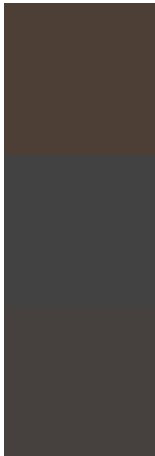
Original Color
4D3F36

Protanomaly
484137

Deuteranomaly
4C3F36

Tritanomaly
4E3E3E

Monochromacy



Original Color
4D3F36

Achromatopsia
424242

Achromatomaly
46413E

CSS Examples

Text

The CSS property to change the color of the text to Hex 4D3F36 is called "color". The color property can be set on classes, ids or directly on the HTML element.

This example shows how text in the color #4D3F36 looks like.

```
.text, #text, p{  
    color:#4D3F36  
}
```

If you want to add a text shadow in that color use the text-shadow property, you can generate a text shadow directly with our [CSS Text Shadow Generator](#).

Here you see how black text with a 4 pixel #4D3F36 colored shadow looks like.

```
.shadow{ text-shadow: 4px 4px 2px #4D3F36
}
```

Border

The CSS property to change the border of an element to Hex 4D3F36 is called "border". The border property can be set on classes, ids or directly on the HTML element.

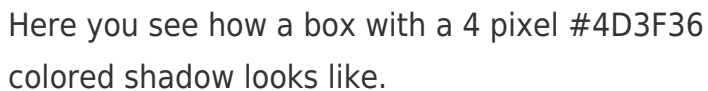
This example shows the color as border, it can be applied via the CSS property "border" or "border-color".

```
.border, #border, table{ border:4px solid
#4D3F36 }
```

If only the border color should be changed use the property `border-color`.

```
.border{ border-color:#4D3F36 }
```

If you want to add a box shadow in that color use:



Here you see how a box with a 4 pixel #4D3F36 colored shadow looks like.

```
.boxshadow{ -moz-box-shadow:4px 4px 4px  
4px #4D3F36; -webkit-box-shadow:4px 4px  
4px 4px #4D3F36; box-shadow:4px 4px 4px  
4px #4D3F36 }
```

Background

The CSS property to change the background color of an element to Hex 4D3F36 is called "background". The background property can be set on classes, ids or directly on the HTML element.

```
.background, #background, body{  
background:#4D3F36 }
```

If only the background color should be changed can be used:

```
.background{ background-color:#4D3F36 }
```

This example shows the color as background, it is applied via the CSS property "background".

To optimize and compress your CSS code, you can use our [online CSS compressor and optimizer](#) based on csstidy. If you want to create a linear or radial gradient as background or border, check our [CSS Gradient Generator](#).

Hey! You found this booklet interesting? Support Converting Colors with the new Membership Option!

The pro membership hides all ads, plus gives you double the colors in the color bucket, and more awesome pro features!

[Learn more, Memberships starting at \\$2.50/m!](#)

**Follow me
on Twitter!**

@ConvertingColor