

Converting Colors

Hex(4D4239)

Have a look what the booklet for
Hex(4D4239) contains.

Hex(4D4239)	3
<i>Conversions</i>	4
<i>Details</i>	6
<i>Harmonies</i>	11
<i>Previews</i>	23
<i>Color Blindness Simulation</i>	26
<i>CSS Examples</i>	29

Color

Hex(4D4239)

Conversions

Conversions Part 1

Format	Color
Hex	4D4239
RGB	77, 66, 57
RGB Percent	30%, 26%, 22%
CMY	0.6980, 0.7412, 0.7765
CMYK	0.00, 0.14, 0.26, 0.70
HSL	27°, 15%, 26%
HSV	27°, 26%, 30%
XYZ	5.7473, 5.7696, 4.6816
YIQ	68.2630, 9.4450, -0.4670

Conversions

Conversions Part 2

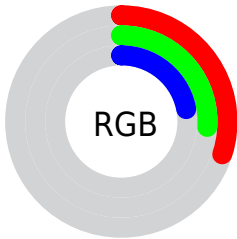
Format	Color
R_{YB}	77, 73, 57
Decimal	5063225
CIE Lab	28.82, 3.05, 7.22
CIE LCh	29, 7.832, 67.116
Yxy	5.7696, 0.3548, 0.3562
Android (android.graphics.Color)	4283253305 (0xFF4D4239)
YUV	68.2630, -5.5527, 7.6623
Hunter-Lab	24.0200, 0.6749, 5.2581

Details

The Hex color **4D4239** is a dark color, and the websafe version is hex **333333**. A complement of this color would be **39444D**, and the grayscale version is **444444**.

A 20% lighter version of the original color is **7E7268**, and **21170E** is the 20% darker color. If you saturate the color by 10%, you get **4D3E31**, and if you desaturate by 10%, it is **4D4641**.

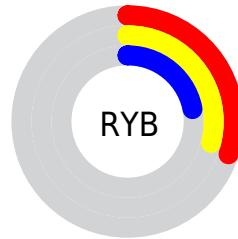
Distribution



 Red (30%)

 Green (26%)

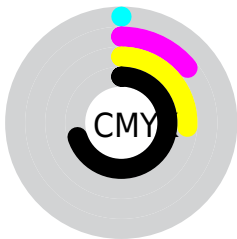
 Blue (22%)



 Red (30%)

 Yellow (29%)

 Blue (22%)

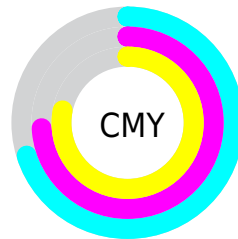


 Cyan (0%)

 Magenta (14%)

 Yellow (26%)

 Black (70%)



 Cyan (70%)

 Magenta (74%)

 Yellow (78%)

Brightness & Saturation Gradients

These gradients show how the Hex color 4D4239 changes by changing the brightness by 10 percent. The first figure shows a shift by +10% for each color and the second figure -10%.

Similar to the brightness gradients but the following saturation gradients show a change of the Hex color 4D4239 by changing the saturation by 10% instead.

■ 4D4239

■ 4D4239

FFFFFF

■ 362C23

■ 7E7268

■ 21170E

■ 988B81

■ 000000

■ B3A69B

■ CFC1B6

■ EBDDD1

■ FFF9EE

■ 4D4239

■ 4D4239

■ 4D3E31

■ 4D4641

■ 4D3A2A

■ 4D4A48

■ 4D3522

■ 4D4F50

■ 4D311A

■ 4D5358

■ 4D2D13

■ 4D5760

■ 4D290B

■ 4D5B67

■ 4D2403

■ 4D606F

■ 4D2300

■ 4D6477

■ 4D687E

Harmonies

Analogous

The Analogous color harmony consists of three colors that are next to each other on the color wheel.



50403D



4D4239



474438

Triad

The Triadic color harmony groups three colors that are evenly spaced from another and form a triangle on the color wheel.



4D4239



354845



47424E

Complementary

The Complementary color scheme is a pair of colors which are on the opposite of each other on the color wheel.



4D4239



39444D

Split Complementary

Split-complementary colors differ from the complementary color scheme. The scheme consists of three colors, the original color and two neighbors of the complement color.



3F4450



4D4239



34474B

Square

The Square scheme is like the rectangle color scheme, but the four colors are evenly spaced on the color wheel.



4D4239



3A473F



38464F



4D4049

Rectangle

The Rectangle color scheme consists of four colors that form a rectangle on the color wheel.



4D4239



434539



38464F



44434F

Sweetspot

The Sweet Spot groups the original color and five complimentary colors.



4D4239



635F5B



4D3944



33302E



B3B3B3



333333

Same Dimension

The Same Dimension uses a secret algorithm to generate beautiful new colors.



4D4239



635245



4D4C39



262422



662E00



E66700

Inverse Universe

The Inverse Universe completely reimagines the original color for something new.



39444D



455663



393A4D



222526



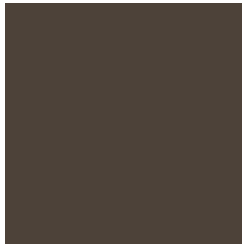
003866



007EE6

Previews

White Background



This preview shows how the Hex color 4D4239 looks on a white background.

Color Contrast Check

Large Text (above 18pt) WCAG AA ✓ Pass

Any Text WCAG AA ✓ Pass

Large Text (above 18pt) WCAG AAA ✓ Pass

Any Text WCAG AAA ✓ Pass

Black Background



Color Contrast Check

Large Text (above 18pt) WCAG AA × Fail

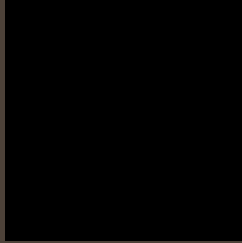
Any Text WCAG AA × Fail

Large Text (above 18pt) WCAG AAA × Fail

Any Text WCAG AAA × Fail

If you want to check with other color combinations, try the [Color Contrast Checker](#).

Hex 4D4239 Background



This preview shows how black text looks on a background with the Hex color 4D4239.

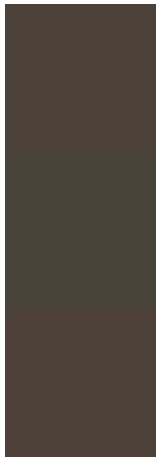


This preview shows how white text looks on a background with the Hex color 4D4239.

Color Blindness Simulation

Color vision deficiency is a very complex topic, and I could not describe the different causes any better than Wikipedia does, so if you want to learn more, you should check out their [article about color blindness](#).

Dichromacy



Original Color
4D4239

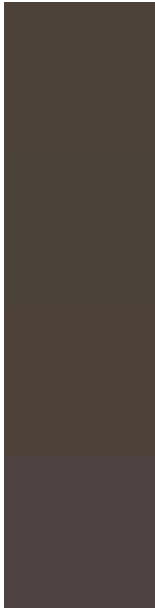
Protanopia
48443A

Deuteranopia
4E4139



Tritanopia
4E4045

Trichromacy



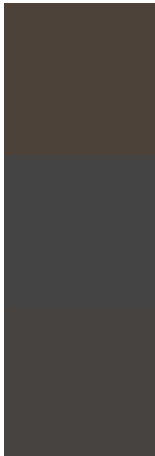
Original Color
4D4239

Protanomaly
4A433A

Deuteranomaly
4E4139

Tritanomaly
4E4141

Monochromacy



Original Color
4D4239

Achromatopsia
444444

Achromatomaly
474340

CSS Examples

Text

The CSS property to change the color of the text to Hex 4D4239 is called "color". The color property can be set on classes, ids or directly on the HTML element.

This example shows how text in the color #4D4239 looks like.

```
.text, #text, p{  
    color:#4D4239  
}
```

If you want to add a text shadow in that color use the text-shadow property, you can generate a text shadow directly with our [CSS Text Shadow Generator](#).

Here you see how black text with a 4 pixel #4D4239 colored shadow looks like.

```
.shadow{ text-shadow: 4px 4px 2px #4D4239
}
```

Border

The CSS property to change the border of an element to Hex 4D4239 is called "border". The border property can be set on classes, ids or directly on the HTML element.

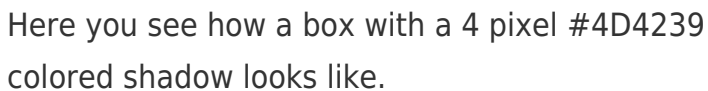
This example shows the color as border, it can be applied via the CSS property "border" or "border-color".

```
.border, #border, table{ border:4px solid
#4D4239 }
```

If only the border color should be changed use the property `border-color`.

```
.border{ border-color:#4D4239 }
```

If you want to add a box shadow in that color use:



Here you see how a box with a 4 pixel #4D4239 colored shadow looks like.

```
.boxshadow{ -moz-box-shadow:4px 4px 4px  
4px #4D4239; -webkit-box-shadow:4px 4px  
4px 4px #4D4239; box-shadow:4px 4px 4px  
4px #4D4239 }
```

Background

The CSS property to change the background color of an element to Hex 4D4239 is called "background". The background property can be set on classes, ids or directly on the HTML element.

```
.background, #background, body{  
background:#4D4239 }
```

If only the background color should be changed can be used:

```
.background{ background-color:#4D4239 }
```

This example shows the color as background, it is applied via the CSS property "background".

To optimize and compress your CSS code, you can use our [online CSS compressor and optimizer](#) based on csstidy. If you want to create a linear or radial gradient as background or border, check our [CSS Gradient Generator](#).

Hey! You found this booklet interesting? Support Converting Colors with the new Membership Option!

The pro membership hides all ads, plus gives you double the colors in the color bucket, and more awesome pro features!

[Learn more, Memberships starting at \\$2.50/m!](#)

**Follow me
on Twitter!**

@ConvertingColor