

# Converting Colors

Hex(4E2318)

Have a look what the booklet for  
Hex(4E2318) contains.

<b>Hex(4E2318)</b> .....	3
<b><i>Conversions</i></b> .....	4
<b><i>Details</i></b> .....	6
<b><i>Harmonies</i></b> .....	11
<b><i>Previews</i></b> .....	23
<b><i>Color Blindness Simulation</i></b> .....	26
<b><i>CSS Examples</i></b> .....	29

# Color

**Hex(4E2318)**

# Conversions

## Conversions Part 1

Format	Color
Hex	4E2318
RGB	78, 35, 24
RGB Percent	31%, 14%, 9%
CMY	0.6941, 0.8627, 0.9059
CMYK	0.00, 0.55, 0.69, 0.69
HSL	12°, 53%, 20%
HSV	12°, 69%, 31%
XYZ	3.9078, 2.8877, 1.2156
YIQ	46.6030, 29.1590, 5.6950

# Conversions

## Conversions Part 2

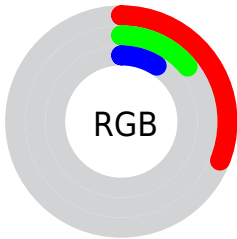
<b>Format</b>	<b>Color</b>
<b>RYB</b>	78, 38, 24
Decimal	5120792
CIELab	19.59, 19.17, 16.66
CIELCh	20, 25.399, 40.989
Yxy	2.8877, 0.4878, 0.3605
Android (android.graphics.Color)	4283310872 (0xFF4E2318)
YUV	46.6030, -11.1433, 27.5352
Hunter-Lab	16.9933, 11.3098, 7.6541

# Details

The Hex color **4E2318** is a dark color, and the websafe version is hex **663333**. A complement of this color would be **18434E**, and the grayscale version is **2F2F2F**.

A 20% lighter version of the original color is **825143**, and **1F0001** is the 20% darker color. If you saturate the color by 10%, you get **4E1D10**, and if you desaturate by 10%, it is **4E2920**.

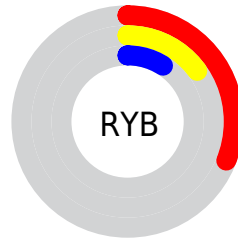
# Distribution



Red (31%)

Green (14%)

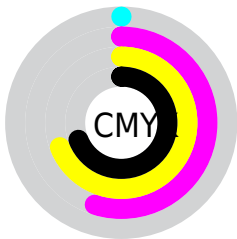
Blue (9%)



Red (31%)

Yellow (15%)

Blue (9%)

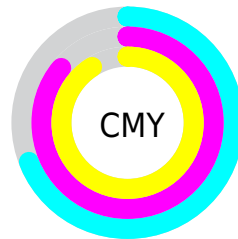


Cyan (0%)

Magenta (55%)

Yellow (69%)

Black (69%)



Cyan (69%)

Magenta (86%)

Yellow (91%)

# Brightness & Saturation Gradients

These gradients show how the Hex color 4E2318 changes by changing the brightness by 10 percent. The first figure shows a shift by +10% for each color and the second figure -10%.

Similar to the brightness gradients but the following saturation gradients show a change of the Hex color 4E2318 by changing the saturation by 10% instead.





4E2318



4E2318



FFFFFFB



360D00



825143



1F0001



9D695B



000000



B98273



D69D8D



F3B8A7



FFD3C2



FFF0DE



4E2318



4E2318

■ 4E1D10

■ 4E2920

■ 4E1708

■ 4E2F28

■ 4E1001

■ 4E362F

■ 4E1000

■ 4E3C37

■ 4E423F

■ 4E4847

■ 4E4E4F

■ 4E5556

■ 4E5B5E

# Harmonies

## Analogous

The Analogous color harmony consists of three colors that are next to each other on the color wheel.



511F29



4E2318



432A0A

# Triad

The Triadic color harmony groups three colors that are evenly spaced from another and form a triangle on the color wheel.



4E2318



003823



192F54

# Complementary

The Complementary color scheme is a pair of colors which are on the opposite of each other on the color wheel.



4E2318



18434E

# Split Complementary

Split-complementary colors differ from the complementary color scheme. The scheme consists of three colors, the original color and two neighbors of the complement color.



003552



4E2318



003836

# Square

The Square scheme is like the rectangle color scheme, but the four colors are evenly spaced on the color wheel.



4E2318



1F3512



003847



39284C

# Rectangle

The Rectangle color scheme consists of four colors that form a rectangle on the color wheel.



4E2318



392F06



003847



033154



# Sweetspot

The Sweet Spot groups the original color and five complimentary colors.



4E2318



665551



4E1843



332926



B3B3B3



333333



# Same Dimension

The Same Dimension uses a secret algorithm to generate beautiful new colors.



4E2318



662311



4E3E18



262322



661500



E62F00



# Inverse Universe

The Inverse Universe completely reimagines the original color for something new.



18434E



115566



18284E



222526



005166

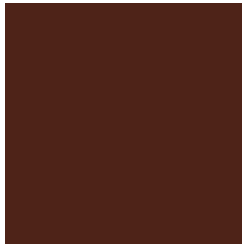


00B7E6



# Previews

## White Background



This preview shows how the Hex color 4E2318 looks on a white background.

## Color Contrast Check

Large Text (above 18pt) WCAG AA ✓ Pass

Any Text WCAG AA ✓ Pass

Large Text (above 18pt) WCAG AAA ✓ Pass

Any Text WCAG AAA ✓ Pass

# Black Background



## Color Contrast Check

Large Text (above 18pt) WCAG AA × Fail

Any Text WCAG AA × Fail

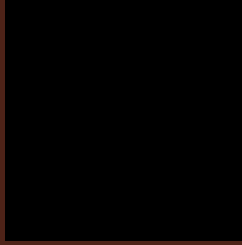
Large Text (above 18pt) WCAG AAA × Fail

Any Text WCAG AAA × Fail

If you want to check with other color combinations, try the [Color Contrast Checker](#).



## Hex 4E2318 Background



This preview shows how black text looks on a background with the Hex color 4E2318.

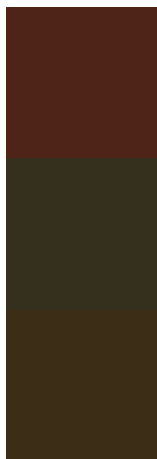


This preview shows how white text looks on a background with the Hex color 4E2318.

# Color Blindness Simulation

Color vision deficiency is a very complex topic, and I could not describe the different causes any better than Wikipedia does, so if you want to learn more, you should check out their [article about color blindness](#).

## Dichromacy



**Original Color**  
4E2318

**Protanopia**  
35301D

**Deuteranopia**  
3C2E16



**Tritanopia**  
4F2224

# Trichromacy



**Original Color**

4E2318

**Protanomaly**

3E2B1B

**Deuteranomaly**

432A17

**Tritanomaly**

4F2220

# Monochromacy



**Original Color**

4E2318

**Achromatopsia**

2F2F2F

**Achromatomaly**

3A2B27

# CSS Examples

## Text

The CSS property to change the color of the text to Hex 4E2318 is called "color". The color property can be set on classes, ids or directly on the HTML element.

This example shows how text in the color #4E2318 looks like.

```
.text, #text, p{  
    color:#4E2318  
}
```

If you want to add a text shadow in that color use the text-shadow property, you can generate a text shadow directly with our [CSS Text Shadow Generator](#).

Here you see how black text with a 4 pixel #4E2318 colored shadow looks like.

```
.shadow{ text-shadow: 4px 4px 2px #4E2318
}
```

## Border

The CSS property to change the border of an element to Hex 4E2318 is called "border". The border property can be set on classes, ids or directly on the HTML element.

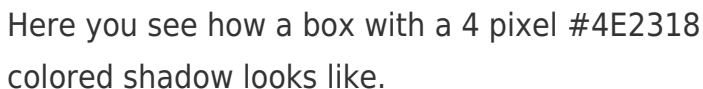
This example shows the color as border, it can be applied via the CSS property "border" or "border-color".

```
.border, #border, table{ border:4px solid
#4E2318 }
```

If only the border color should be changed use the property `border-color`.

```
.border{ border-color:#4E2318 }
```

If you want to add a box shadow in that color use:



Here you see how a box with a 4 pixel #4E2318 colored shadow looks like.

```
.boxshadow{ -moz-box-shadow:4px 4px 4px  
4px #4E2318; -webkit-box-shadow:4px 4px  
4px 4px #4E2318; box-shadow:4px 4px 4px  
4px #4E2318 }
```

# Background

The CSS property to change the background color of an element to Hex 4E2318 is called "background". The background property can be set on classes, ids or directly on the HTML element.

```
.background, #background, body{  
background:#4E2318 }
```

If only the background color should be changed can be used:

```
.background{ background-color:#4E2318 }
```

This example shows the color as background, it is applied via the CSS property "background".

To optimize and compress your CSS code, you can use our [online CSS compressor and optimizer](#) based on csstidy. If you want to create a linear or radial gradient as background or border, check our [CSS Gradient Generator](#).



Hey! You found this booklet interesting? Support Converting Colors with the new Membership Option!

The pro membership hides all ads, plus gives you double the colors in the color bucket, and more awesome pro features!

**[Learn more, Memberships starting at \\$2.50/m!](#)**

**Follow me  
on Twitter!**

@ConvertingColor