

Converting Colors

Hex(4E3130)

Have a look what the booklet for
Hex(4E3130) contains.

Hex(4E3130)	3
<i>Conversions</i>	4
<i>Details</i>	6
<i>Harmonies</i>	11
<i>Previews</i>	23
<i>Color Blindness Simulation</i>	26
<i>CSS Examples</i>	29

Color

Hex(4E3130)

Conversions

Conversions Part 1

Format	Color
Hex	4E3130
RGB	78, 49, 48
RGB Percent	31%, 19%, 19%
CMY	0.6941, 0.8078, 0.8118
CMYK	0.00, 0.37, 0.38, 0.69
HSL	2°, 24%, 25%
HSV	2°, 38%, 31%
XYZ	4.7737, 4.0297, 3.3225
YIQ	57.5570, 17.6050, 5.8370

Conversions

Conversions Part 2

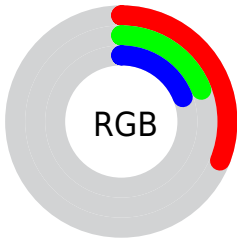
Format	Color
RYB	78, 49, 48
Decimal	5124400
CIELab	23.77, 13.06, 6.07
CIElCh	24, 14.399, 24.934
Yxy	4.0297, 0.3937, 0.3323
Android (android.graphics.Color)	4283314480 (0xFF4E3130)
YUV	57.5570, -4.7116, 17.9285
Hunter-Lab	20.0742, 7.3180, 4.2387

Details

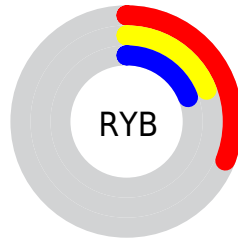
The Hex color **4E3130** is a dark color, and the websafe version is hex **663333**. A complement of this color would be **304D4E**, and the grayscale version is **3A3A3A**.

A 20% lighter version of the original color is **805F5E**, and **230300** is the 20% darker color. If you saturate the color by 10%, you get **4E2928**, and if you desaturate by 10%, it is **4E3938**.

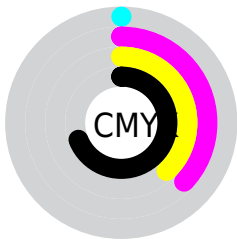
Distribution



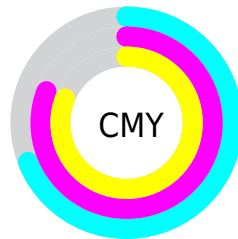
- Red (31%)
- Green (19%)
- Blue (19%)



- Red (31%)
- Yellow (19%)
- Blue (19%)



- Cyan (0%)
- Magenta (37%)
- Yellow (38%)
- Black (69%)



- Cyan (69%)
- Magenta (81%)
- Yellow (81%)

Brightness & Saturation Gradients

These gradients show how the Hex color 4E3130 changes by changing the brightness by 10 percent. The first figure shows a shift by +10% for each color and the second figure -10%.

Similar to the brightness gradients but the following saturation gradients show a change of the Hex color 4E3130 by changing the saturation by 10% instead.

■ 4E3130

■ 4E3130

FFFFFF

■ 361C1B

■ 805F5E

■ 230300

■ 9B7877

■ 000000

■ B69290

■ D2ADAB

■ EEC8C6

■ FFE4E2

■ 4E3130

■ 4E3130

■ 4E2928

■ 4E3938

■ 4E2220

■ 4E4040

■ 4E1A19

■ 4E4847

■ 4E1311

■ 4E4F4F

■ 4E0B09

■ 4E5757

■ 4E0401

■ 4E5E5F

■ 4E0300

■ 4E6667

■ 4E6D6E

■ 4E7576

Harmonies

Analogous

The Analogous color harmony consists of three colors that are next to each other on the color wheel.



4C313B



4E3130



4A3427

Triad

The Triadic color harmony groups three colors that are evenly spaced from another and form a triangle on the color wheel.



4E3130



2A3D2C



283A4E

Complementary

The Complementary color scheme is a pair of colors which are on the opposite of each other on the color wheel.



4E3130



304D4E

Split Complementary

Split-complementary colors differ from the complementary color scheme. The scheme consists of three colors, the original color and two neighbors of the complement color.



193D4A



4E3130



1E3E36

Square

The Square scheme is like the rectangle color scheme, but the four colors are evenly spaced on the color wheel.



4E3130



373B25



153E41



38364C

Rectangle

The Rectangle color scheme consists of four colors that form a rectangle on the color wheel.



4E3130



453624



153E41



223B4D

Sweetspot

The Sweet Spot groups the original color and five complimentary colors.



4E3130



665A5A



4E304D



332C2C



B3B3B3



333333

Same Dimension

The Same Dimension uses a secret algorithm to generate beautiful new colors.



4E3130



663937



4E4030



262322



660300



E60800

Inverse Universe

The Inverse Universe completely reimagines the original color for something new.



304D4E



376466



303E4E



222626



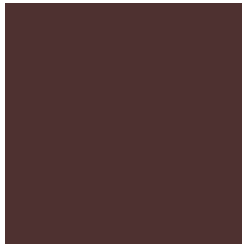
006366



00DEE6

Previews

White Background



This preview shows how the Hex color 4E3130 looks on a white background.

Color Contrast Check

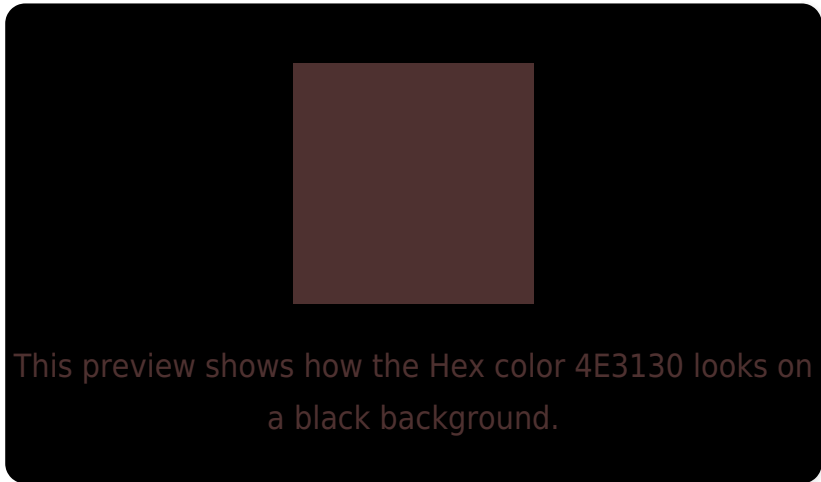
Large Text (above 18pt) WCAG AA ✓ Pass

Any Text WCAG AA ✓ Pass

Large Text (above 18pt) WCAG AAA ✓ Pass

Any Text WCAG AAA ✓ Pass

Black Background



Color Contrast Check

Large Text (above 18pt) WCAG AA × Fail

Any Text WCAG AA × Fail

Large Text (above 18pt) WCAG AAA × Fail

Any Text WCAG AAA × Fail

If you want to check with other color combinations, try the [Color Contrast Checker](#).

Hex 4E3130 Background



This preview shows how black text looks on a background with the Hex color 4E3130.

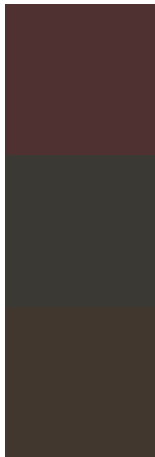


This preview shows how white text looks on a background with the Hex color 4E3130.

Color Blindness Simulation

Color vision deficiency is a very complex topic, and I could not describe the different causes any better than Wikipedia does, so if you want to learn more, you should check out their [article about color blindness](#).


Dichromacy



Original Color
4E3130

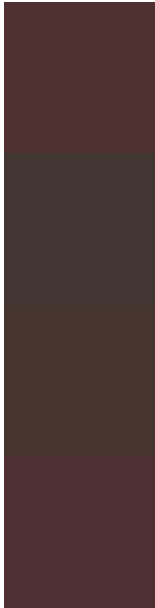
Protanopia
3B3934

Deuteranopia
42372F



Tritanopia
4E3034

Trichromacy



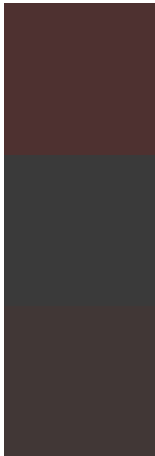
Original Color
4E3130

Protanomaly
423633

Deuteranomaly
46352F

Tritanomaly
4E3033

Monochromacy



Original Color
4E3130

Achromatopsia
3A3A3A

Achromatomaly
413736

CSS Examples

Text

The CSS property to change the color of the text to Hex 4E3130 is called "color". The color property can be set on classes, ids or directly on the HTML element.

This example shows how text in the color #4E3130 looks like.

```
.text, #text, p{  
    color:#4E3130  
}
```

If you want to add a text shadow in that color use the text-shadow property, you can generate a text shadow directly with our [CSS Text Shadow Generator](#).

Here you see how black text with a 4 pixel #4E3130 colored shadow looks like.

```
.shadow{ text-shadow: 4px 4px 2px #4E3130
}
```

Border

The CSS property to change the border of an element to Hex 4E3130 is called "border". The border property can be set on classes, ids or directly on the HTML element.

This example shows the color as border, it can be applied via the CSS property "border" or "border-color".

```
.border, #border, table{ border:4px solid
#4E3130 }
```

If only the border color should be changed use the property `border-color`.

```
.border{ border-color:#4E3130 }
```

If you want to add a box shadow in that color use:

Here you see how a box with a 4 pixel #4E3130 colored shadow looks like.

```
.boxshadow{ -moz-box-shadow:4px 4px 4px  
4px #4E3130; -webkit-box-shadow:4px 4px  
4px 4px #4E3130; box-shadow:4px 4px 4px  
4px #4E3130 }
```

Background

The CSS property to change the background color of an element to Hex 4E3130 is called "background". The background property can be set on classes, ids or directly on the HTML element.

```
.background, #background, body{  
background:#4E3130 }
```

If only the background color should be changed can be used:

```
.background{ background-color:#4E3130 }
```

This example shows the color as background, it is applied via the CSS property "background".

To optimize and compress your CSS code, you can use our [online CSS compressor and optimizer](#) based on csstidy. If you want to create a linear or radial gradient as background or border, check our [CSS Gradient Generator](#).

Hey! You found this booklet interesting? Support Converting Colors with the new Membership Option!

The pro membership hides all ads, plus gives you double the colors in the color bucket, and more awesome pro features!

[Learn more, Memberships starting at \\$2.50/m!](#)

**Follow me
on Twitter!**

@ConvertingColor